

5

W. Schüller & Sohn
G. m. b. H.
Barmen

HAUTE NOUVEAUTÉ



GES. GESCH.

1948

1



3



421



420



9



5



1153



1154



1155



31



28



25



184



1079

1



3



421



420



9



5



1154



1155



31



28



11



35



36

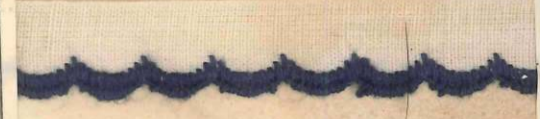


4368

1



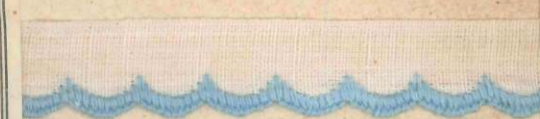
3



421



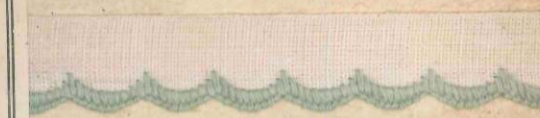
420



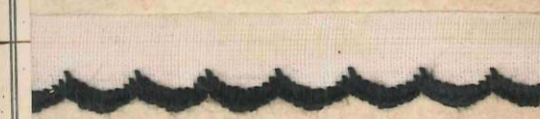
9



58



5



38802

1



3



420



421



42



58



5



HAUTE NOUVEAUTÉ



Sample No.	Color	Sample No.	Color	Sample No.	Color
28369	Red	20197	Dark Blue	25892	Red
1		1		Dollar	
3	Dark Blue	3	Dark Blue	21	Dark Blue
421	Pink	420	Light Blue	3	Dark Blue
420	Light Blue	421	Pink	421	Light Blue
9	Purple	421	Light Blue	430	Light Blue
1725	Brown	421	Pink	430	Light Blue
5	Black	421	Dark Blue	58	Green
28391	Red	9	Purple	9	Light Blue
1		5	Black	1153	Light Blue
3	Dark Blue	28828	Red	1189	Dark Blue
421	Pink	1	Red	1155	Dark Blue
420	Light Blue	3	Dark Blue	31	Red
9	Purple	421	Pink	91	Light Blue
5	Black	255	Light Blue	38	Dark Blue
		9	Purple	35	Black
				36	Red

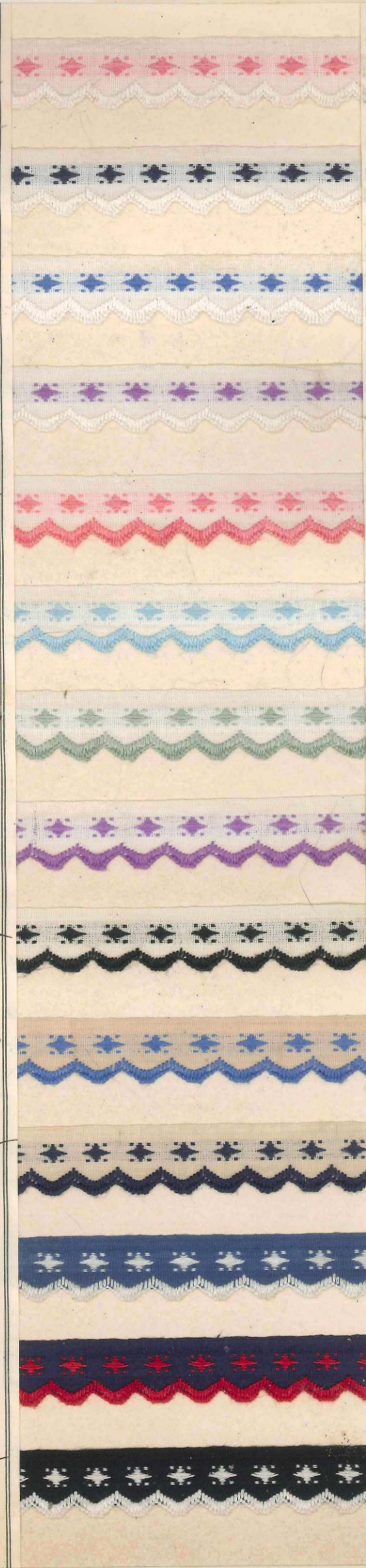
HAUTE NOUVEAUTÉ

GES GESCH

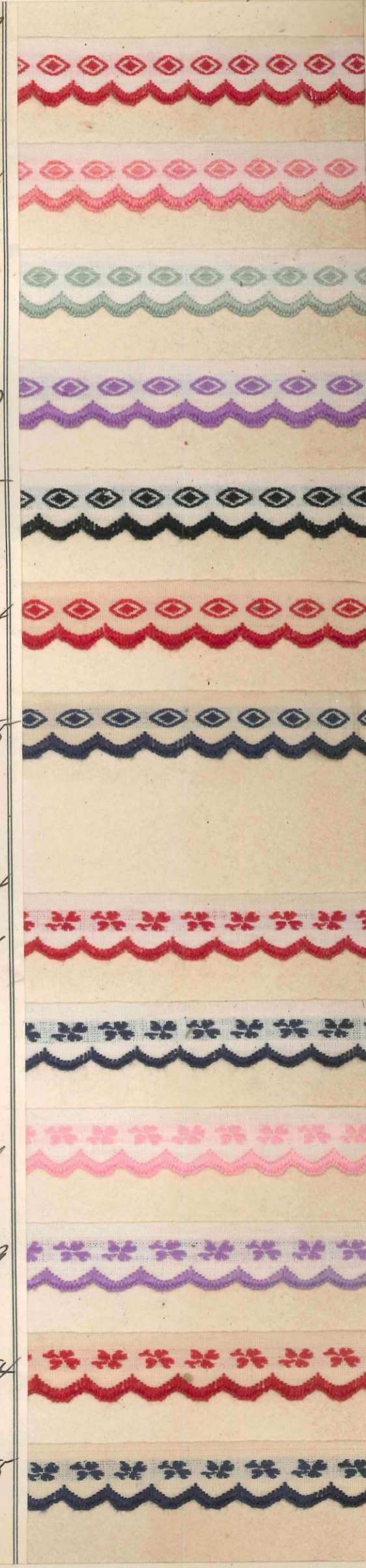
22866
Dollars
24
01
03
0421
0420
09
05
1
420
421
58
5
1154
1155
35



24682
0104
24
03
0421
09
104
420
58
9
5
1189
1155
91
11
35



36633
1
24
104
58
9
5
1154
1155
36694
24
3
421
9
1154
1155





HAUTE NOUVEAUTE

GES. GESCH.



HAUTE NOUVEAUTÉ

GES. GE. SCH.

38701
Beller
2/30



3



421



42



9



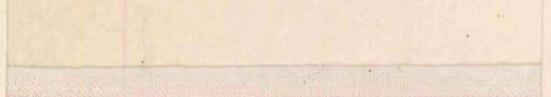
1735



5



38702



2/30



3



421



420



58



9



5



38700



1

2/30

3



421



420



58



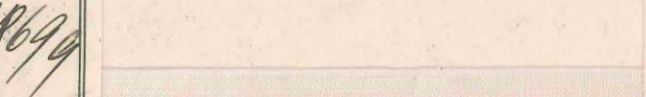
9



5



38699



1

2/30

3



421



420



58



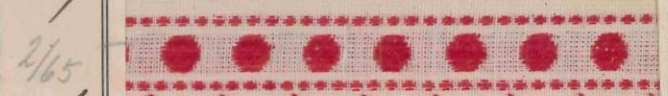
9



5



29119



2/65

1

3



421



355



9



29118



2/65

1

3



421



420



9



5



HAUTE NOUVEAUTÉ

GES. GESCH.

21106 Dollar 2/201		26914 2/201		29371 2/201	
		3		3	
421		420		421	
420		421		420	
9		421		9	
5		9		5	
1154		5		17595 2/65	
1155		1153		1	
31		1154		3	
28		1155		420	
35		31		421	
36		28		93	
				9	

HAUTE NOUVEAUTÉ

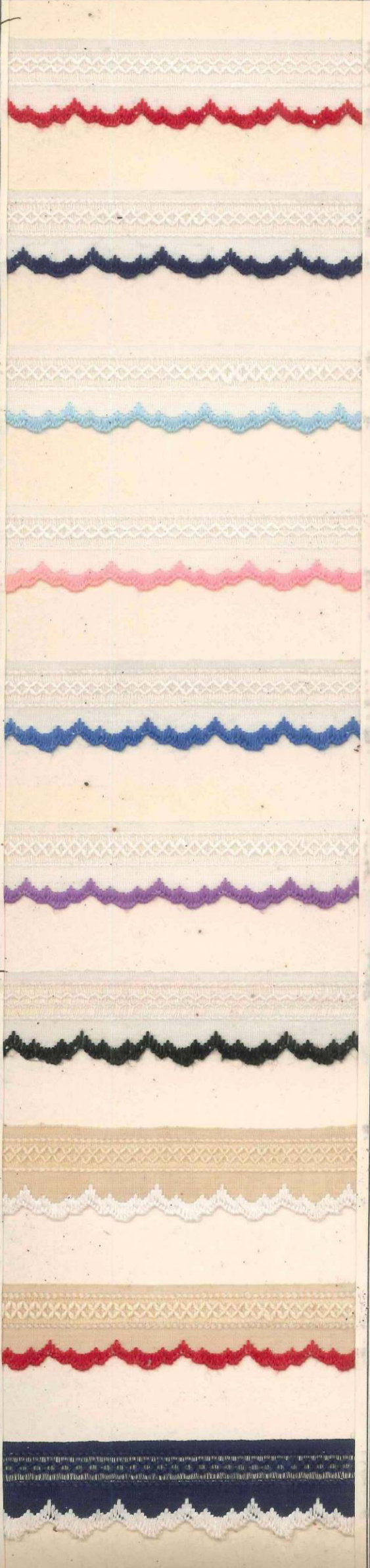
GES. GESCH.

Product ID	Color / Description	Product ID	Color / Description	Product ID	Color / Description
2377	Red scalloped edge	35161	Red scalloped edge	28010	Red scalloped edge
Dollar 1		2770	Blue scalloped edge	285	Blue scalloped edge
1/90		3	Light blue scalloped edge	1	Light blue scalloped edge
3	Dark blue scalloped edge	420	Light blue scalloped edge	3	Dark blue scalloped edge
420	Light blue scalloped edge	104	Red scalloped edge	421	Pink scalloped edge
421	Pink scalloped edge	42	Blue scalloped edge	420	Light blue scalloped edge
93	Dark blue scalloped edge	9	Purple scalloped edge	9	Purple scalloped edge
9	Purple scalloped edge	5	Black scalloped edge	5	Black scalloped edge
5	Black scalloped edge	1153	White scalloped edge	28025	White scalloped edge
1153	White scalloped edge	1154	Red scalloped edge	3/15	Red scalloped edge
1154	Red scalloped edge	31	Dark blue scalloped edge	1	Red scalloped edge
31	Dark blue scalloped edge	1155	Dark blue scalloped edge	3	Dark blue scalloped edge
28	Dark blue scalloped edge	31	Red scalloped edge	421	Pink scalloped edge
11	Dark blue scalloped edge	28	Dark blue scalloped edge	420	Light blue scalloped edge
35	Black scalloped edge			5	Black scalloped edge

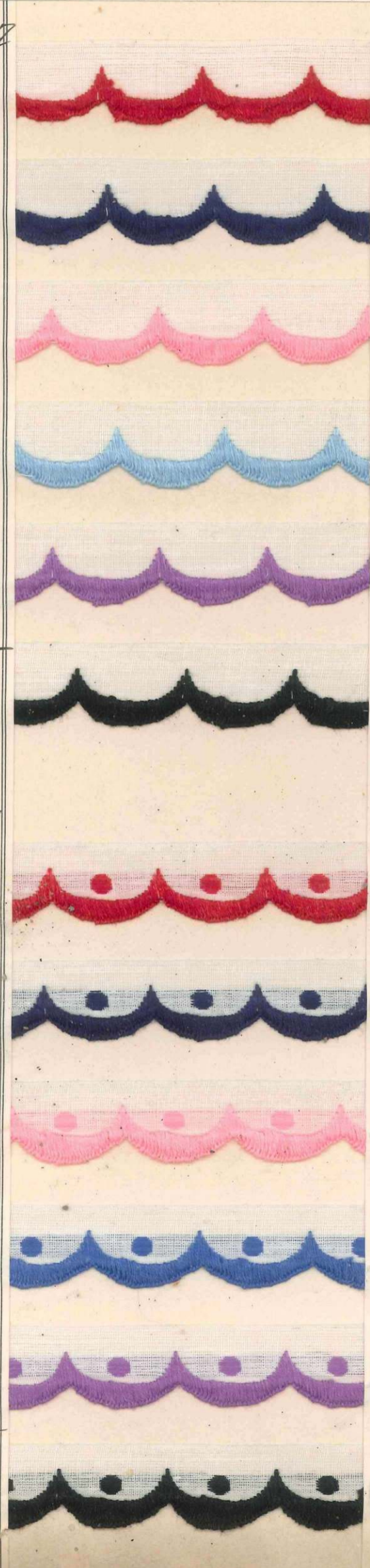
HAUTE NOUVEAUTÉ

GES. GESCH.

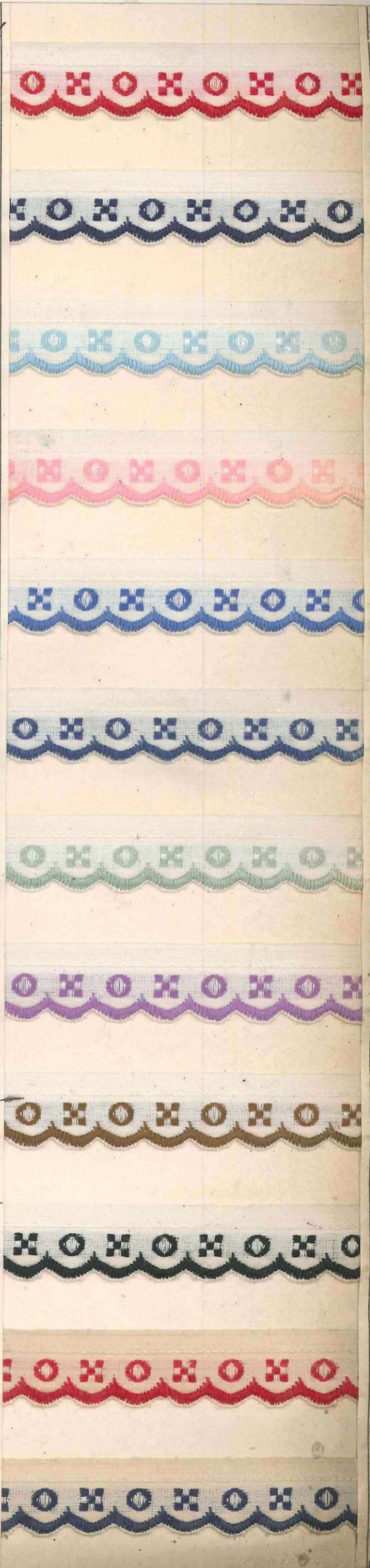
22175
245
3
420
421
421
9
5
1153
1154
38



28727
259
3
421
420
9
5
28738
270
3
421
421
9
5



29124
315
3
420
421
421
93
58
9
1735
5
1154
1155



HAUTE NOUVEAUTÉ

GES. GESCH.

29/25

3/10



3



420



421



42



93



58



9



1725



5



1154



1155



2805

3/10



3



420



421



42



93



58



9



1725



5



1154



1155

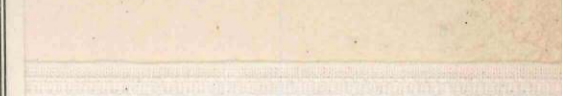


29670

2/50



3



420



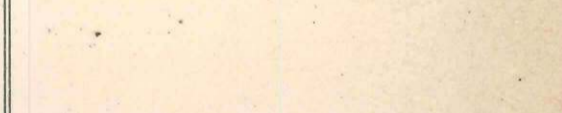
421



42



93



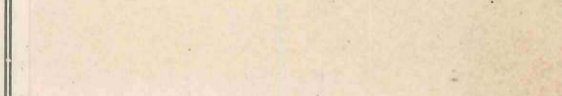
42



58



9



5



5



HAUTE NOUVEAUTÉ

GES. GESCH.

34376

3/51



3



421



420



58



9



5



1154



31



91



58



35



38084

2/501



3



421



420



58



9



5



34805

3/51



3



420



421



42



9



5



1154



31



91



38



35

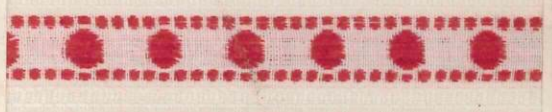


HAUTE NOUVEAUTÉ

GES. GESCH.

29673

2/50
1



3



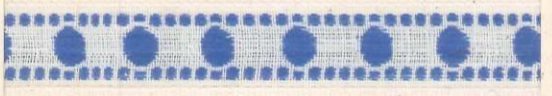
420



421



42



58



9



5



29373

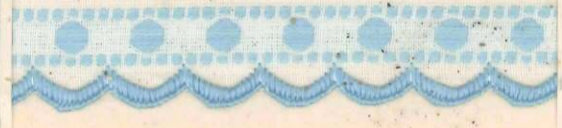
3/5
1



3



420



421



93



9



5



1154



31



91



28



35



29673

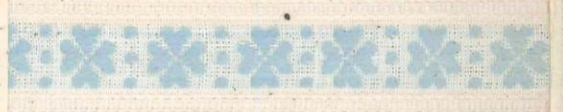
2/50
1



3



420



421



42



58



9



5



HAUTE NOUVEAUTÉ

GES. GESCH.

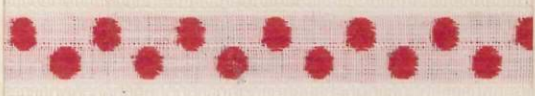
24372		28082		28042	
3151		2159		3151	
3		3		3	
421		420		420	
420		421		421	
58		421		42	
9		420		9	
5		58		5	
1154		420		1154	
31		9		31	
91		5		91	
28				28	
35				35	

HAUTE NOUVEAUTÉ

GES. GESCH.

29672

2/50



3



420



421



42



58



9



5



29364

3/5



3



421



420



93



9



5



454



31



91



38



35



29664

2/50



3



420



421



42



58



9



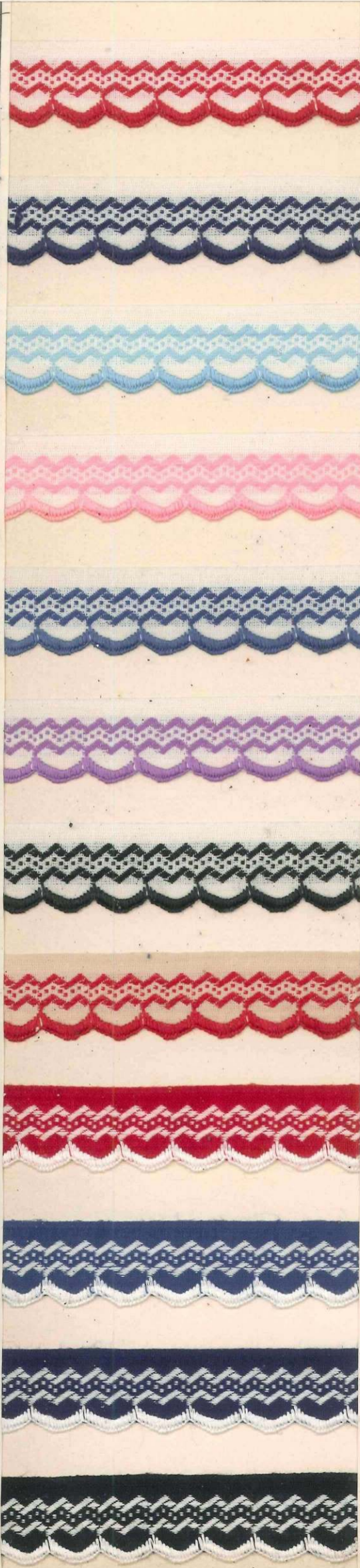
5



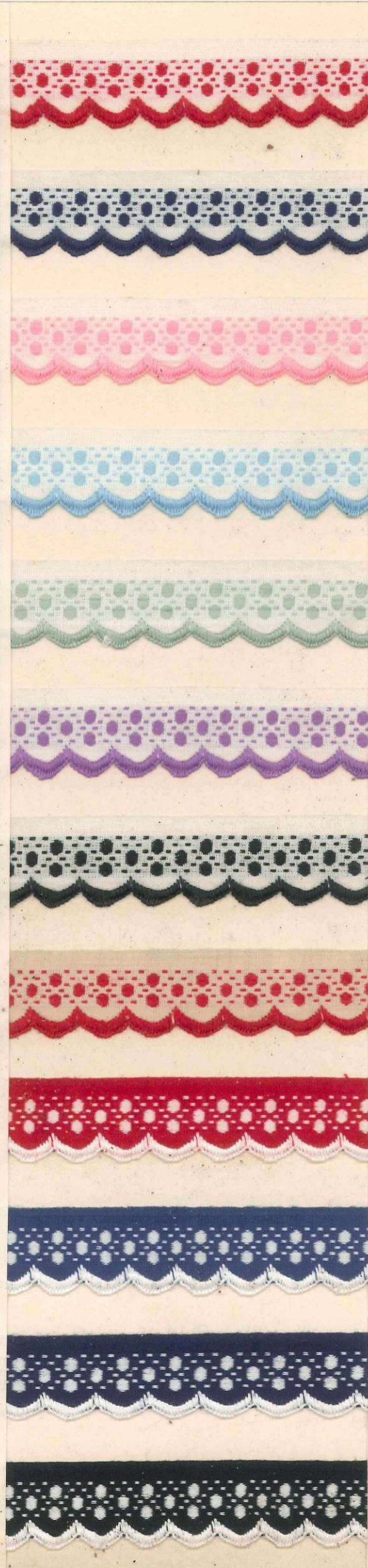
HAUTE NOUVEAUTÉ

GES. GESCH.

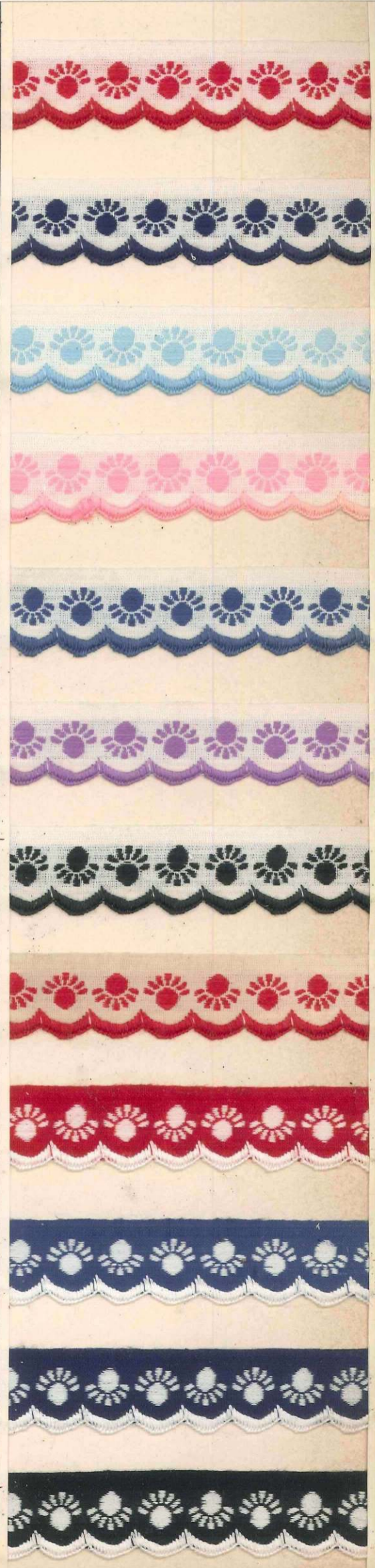
24375
3/15
3
420
421
93
9
5
1184
31
91
38
35



24452
3/15
3
421
420
58
9
5
1184
31
91
38
35



24374
3/15
3
420
421
93
9
5
1184
31
91
38
35



HAUTE NOUVEAUTÉ

GES. GESCH.

Dalle

Product ID	Color	Pattern	Product ID	Color	Pattern	Product ID	Color	Pattern
35625	Red	Scalloped edge with red cross-stitch	38724	Red	Scalloped edge with red diamond	38537	Red	Scalloped edge with red zigzag
3/15			3/1			2/30		
3	Dark Blue	Scalloped edge with dark blue cross-stitch	3	Dark Blue	Scalloped edge with dark blue diamond	3	Dark Blue	Scalloped edge with dark blue zigzag
421	Pink	Scalloped edge with pink cross-stitch	421	Pink	Scalloped edge with pink diamond	420	Light Blue	Scalloped edge with light blue zigzag
430	Light Blue	Scalloped edge with light blue cross-stitch	421	Pink	Scalloped edge with pink diamond	421	Pink	Scalloped edge with pink zigzag
9	Purple	Scalloped edge with purple cross-stitch	420	Light Blue	Scalloped edge with light blue diamond	421	Pink	Scalloped edge with pink zigzag
5	Black	Scalloped edge with black cross-stitch	420	Light Blue	Scalloped edge with light blue diamond	421	Pink	Scalloped edge with pink zigzag
1153	White	Scalloped edge with white cross-stitch	58	Green	Scalloped edge with green diamond	9	Purple	Scalloped edge with purple zigzag
1154	Red	Scalloped edge with red cross-stitch	9	Purple	Scalloped edge with purple diamond	58	Green	Scalloped edge with green zigzag
1155	Dark Blue	Scalloped edge with dark blue cross-stitch	5	Black	Scalloped edge with black diamond	5	Black	Scalloped edge with black zigzag
31	Red	Scalloped edge with red cross-stitch	5	Black	Scalloped edge with black diamond	28	Dark Blue	Scalloped edge with dark blue zigzag
28	Dark Blue	Scalloped edge with dark blue cross-stitch				28	Dark Blue	Scalloped edge with dark blue zigzag
36	Red	Scalloped edge with red cross-stitch				35	Black	Scalloped edge with black zigzag

HAUTE NOUVEAUTÉ

GES. GESCH.

38703

3/1



3



420



421



422



9



58



5



1153



1154



1155



34727

3/50



3



420



421



422



58



9



5



34728

3/50



3



420



421



422



58



9



5



HAUTE NOUVEAUTÉ

GES. GESCH.

Dollar

29734	3/50	1	29124	3/25	1	28925	2/85	1
		3		3			3	
				421			421	
	420			420			420	
				5			420	
	421			29130			104	
				3/25	1		42	
		58		3			58	
				421				
	9			420			9	
		5		5			5	

HAUTE NOUVEAUTÉ

GES. GESCH.

28489		28487		28483	
2/901		2/451		3/1	
3		3		3	
421		420		420	
420		421		420	
9		421		421	
5		58		421	
28490		5		421	
2/901		28488		104	
3		4/51		93	
421		3		58	
420		421		9	
9		420		5	
5		9			
		5			

HAUTE NOUVEAUTÉ

GES. GESCH.

Dollar

2974

3/1



3



420



421



42



104



93



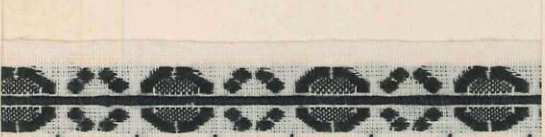
58



9



5



38320

3/30



3



421



420



9



58



38321

3/30



3



421



420



9



5



28113

3/30



3



421



420



104



42



58



9



5



HAUTE NOUVEAUTÉ

GES. GESCH.

264/3		29537		29536	
2/201		3/65		3/65	
3		1		1	
420		3		3	
421					
42		420		420	
9					
29551		421		421	
3/501					
3		42		42	
421		9		9	
420					
9		5		5	
5					



HAUTE NOUVEAUTÉ

GES. GESCH.

Deliver

18901 3/50	18902 3	18903 4/2	18904 4/2	18905 4/2	18906 4/2	18907 4/2	18908 4/2	18909 4/2	18910 4/2	18911 4/2	18912 4/2	18913 4/2	18914 4/2	18915 4/2	18916 4/2	18917 4/2	18918 4/2	18919 4/2	18920 4/2	

HAUTE NOUVEAUTÉ

GES. GESCH.

34358		34465		38725	
348		4101		309	
349		3		3	
351		421		421	
352		420		420	
353		9		9	
354		5		5	
343		38726		38726	
348		1		1	
350		420		340	
351		9		3	
352		421		421	
353		420		420	
354		9		9	
		5		5	

HAUTE NOUVEAUË

GES. GESCH.

Dollar

28730

41

23

3

4

2

5

28732

1

23

3

4

2

5

7

29514

23

41

7

2

4

3

5

29

28

8

30

31

32

34517

23

41

7

2

4

3

5

29

28

8

30

31

32

HAUTE NOUVEAUTÉ

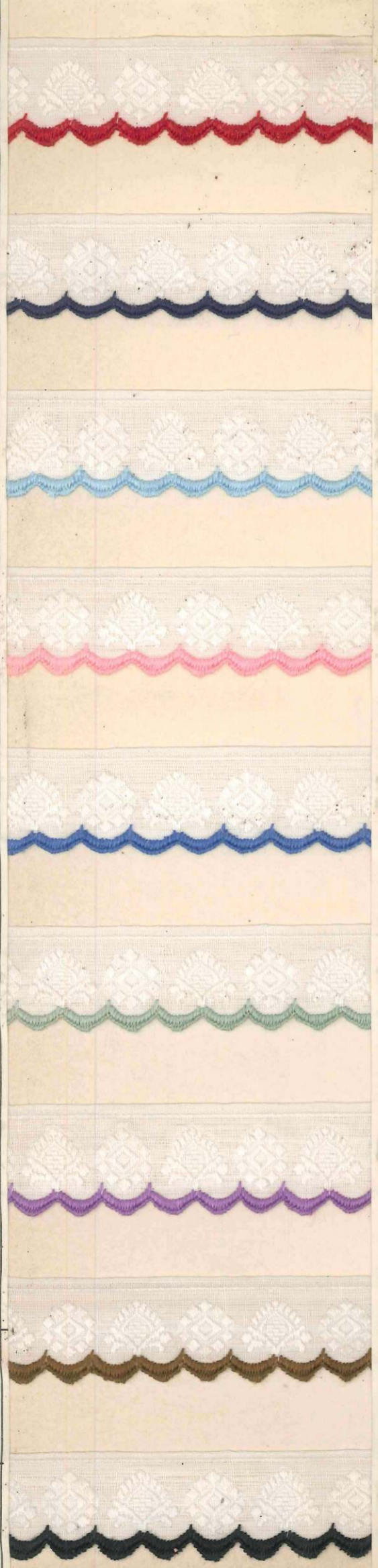
GES. GESCH.

24518	24516	24515
23	23	23
41	41	41
7	7	7
2	2	2
4	4	4
3	3	3
5	5	5
29	29	29
28	28	28
8	8	8
30	30	30
31	31	31
32	32	32

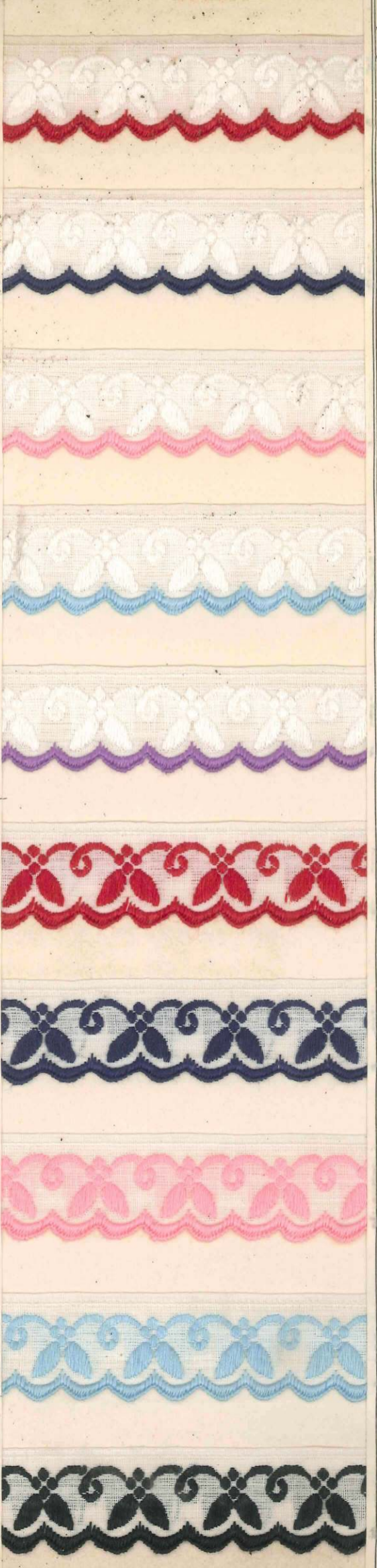
HAUTE NOUVEAUTÉ

Dollar

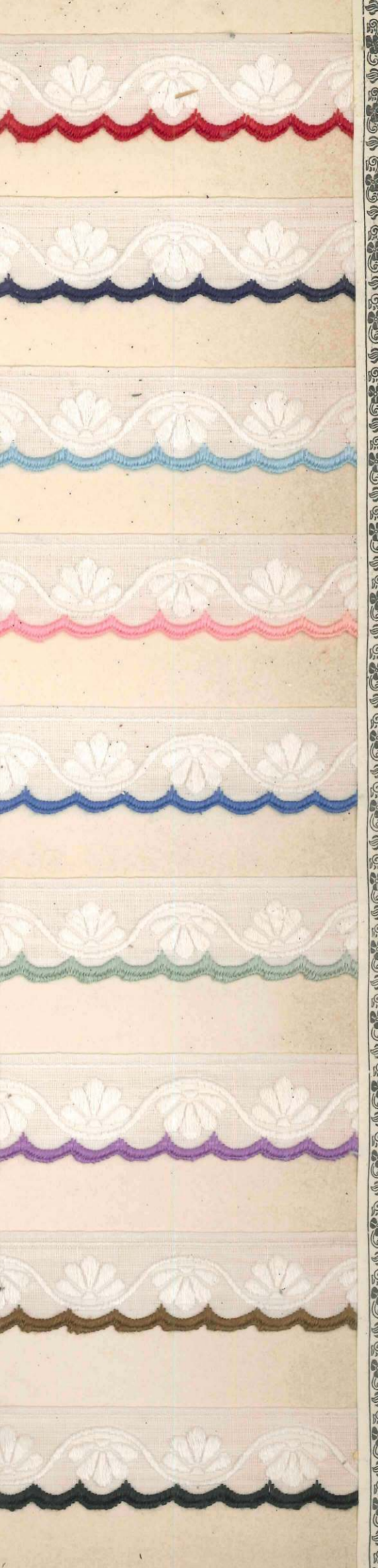
29658
4/20
1
3
4/20
4/21
4/20
58
9
17/25
5



29656
4/20
3
4/21
4/20
9
29656
4/20
3
4/21
4/20
5



29659
4/20
3
4/20
4/21
4/20
58
9
17/25
5



HAUTE NOUVEAUTÉ



GER. OESCH.

24657

4/20
1



3



4/21



4/20



9



24657 1/2

4/20
1



3



4/21



4/20



5



28600

4/20
1



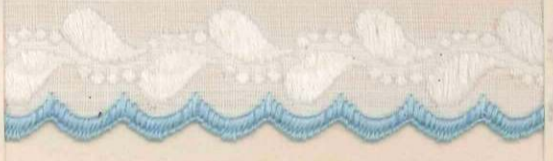
3



4/21



4/20



9



28593

4/20
1



4/20



4/21

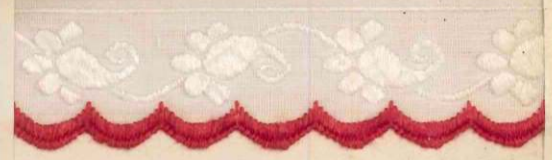


9



24994

4/20
1



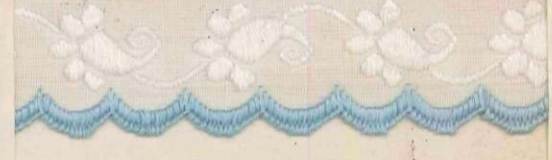
3



4/21



4/20



104



93



9



5



1153



1154



1155



HAUTE NOUVEAUTÉ



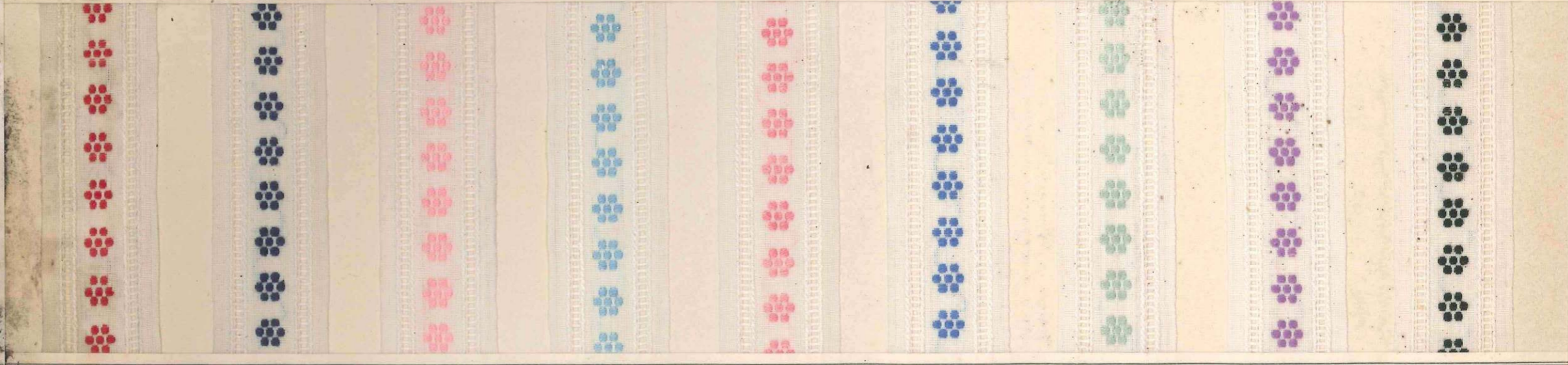
Dollar

Product ID	Color	Pattern	Price
36264	Red	Square	4/10
36267	Red	Scalloped	4/30
38686	Red	Scalloped with dots	4/20
36264	Dark Blue	Square	3
36267	Dark Blue	Scalloped	3
38686	Dark Blue	Scalloped with dots	3
430	Light Blue	Square	4/30
430	Light Blue	Scalloped	4/30
430	Light Blue	Scalloped with dots	4/30
421	Pink	Square	4/21
421	Pink	Scalloped	4/21
421	Pink	Scalloped with dots	4/21
42	Dark Blue	Square	4/2
42	Dark Blue	Scalloped	4/2
42	Dark Blue	Scalloped with dots	4/2
57	Green	Square	57
57	Green	Scalloped	57
57	Green	Scalloped with dots	57
9	Purple	Square	9
9	Purple	Scalloped	9
9	Purple	Scalloped with dots	9
5	Black	Square	5
5	Black	Scalloped	5
5	Black	Scalloped with dots	5

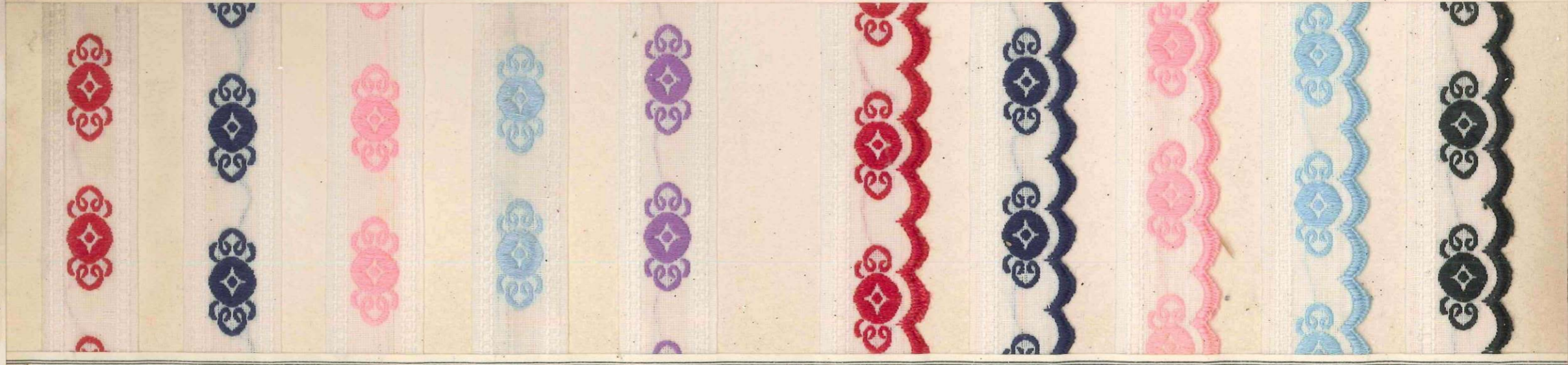
HAUTE NOUVEAUTÉ

855 62 SCH

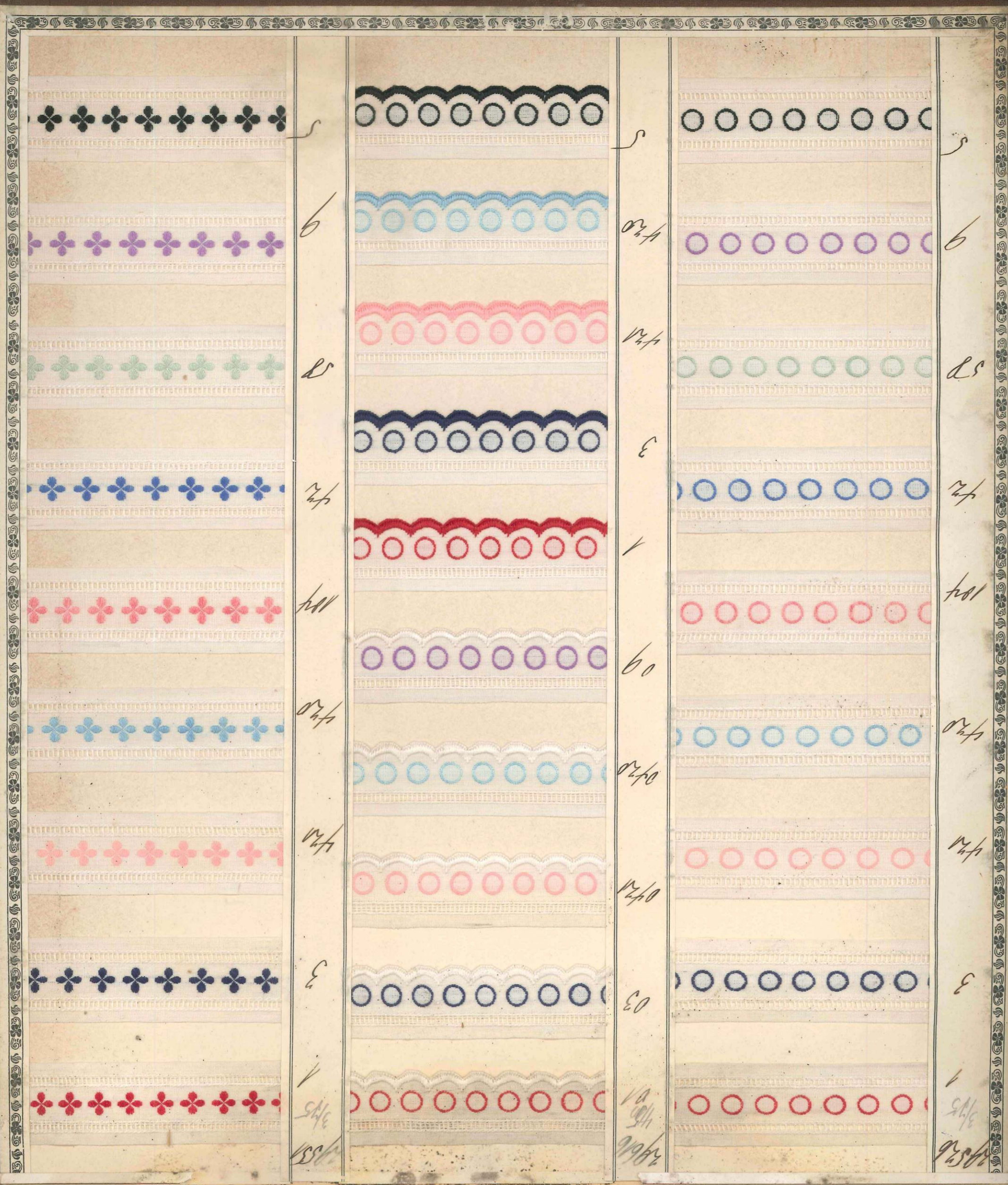
855
450
11
03
44
430
09
1
3
43
430
5



53
3/5
3
44
430
104
42
85
9
5



4450
3/10
3
44
430
9
3945
420
3
43
430
6





Sample No.	Color	Pattern	Sample No.	Color	Pattern	Sample No.	Color	Pattern
24587 4501	Red	Floral	4501	Red	Circle	4617 4501	Red	Circle
03	Blue	Floral	3	Blue	Circle	03	Blue	Circle
0421	Pink	Floral	421	Pink	Circle	0421	Pink	Circle
0420	Light Blue	Floral	420	Light Blue	Circle	0420	Light Blue	Circle
09	Purple	Floral	104	Pink	Circle	09	Purple	Circle
1	Red	Floral	421	Blue	Circle	1	Red	Circle
3	Dark Blue	Floral	88	Light Green	Circle	3	Dark Blue	Circle
421	Pink	Floral	9	Purple	Circle	421	Pink	Circle
420	Light Blue	Floral	5	Black	Circle	420	Light Blue	Circle
5	Black	Floral				5	Black	Circle

HAUT

TÉ

Handwritten notes at the top left of the page.

Sample No.	Color	Pattern	Sample No.	Color	Pattern	Sample No.	Color	Pattern
29433	Red	Floral	415	Red	Scalloped	29381	Red	Floral
3	Blue	Floral	3	Blue	Scalloped	3	Blue	Floral
421	Pink	Floral	421	Pink	Scalloped	421	Pink	Floral
420	Light Blue	Floral	420	Light Blue	Scalloped	420	Light Blue	Floral
104	Red	Floral	104	Red	Scalloped	104	Red	Floral
42	Dark Blue	Floral	42	Dark Blue	Scalloped	42	Dark Blue	Floral
58	Green	Floral	58	Green	Scalloped	58	Green	Floral
9	Purple	Floral	9	Purple	Scalloped	9	Purple	Floral
5	Black	Floral	5	Black	Scalloped	5	Black	Floral

HA

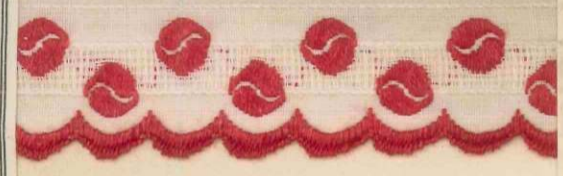
AUTÉ



24382

9
415

1



3



421



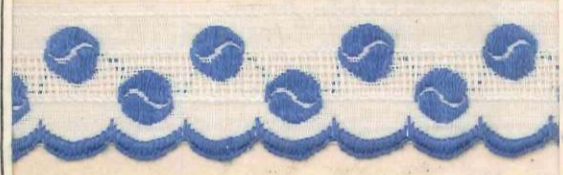
420



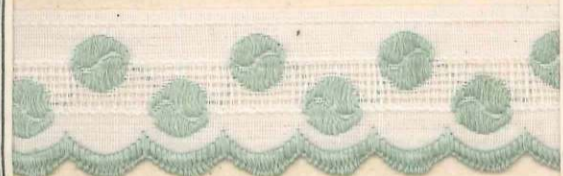
184



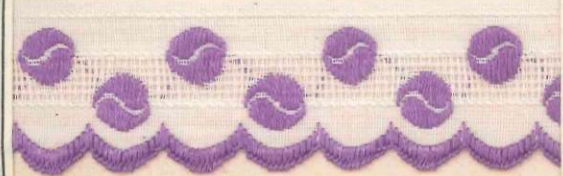
42



58



9



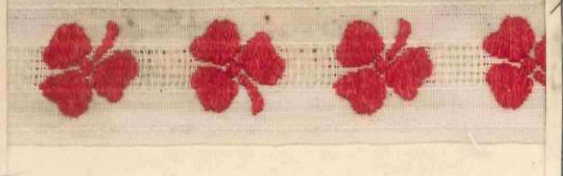
5



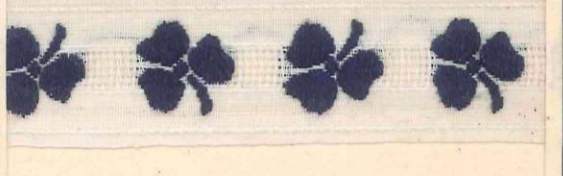
24381

9
415

1



3



421



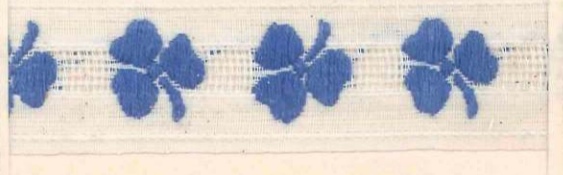
420



184



42



58



9



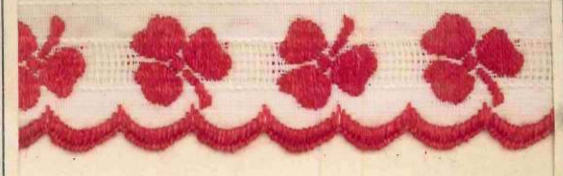
5



24382

9
415

1



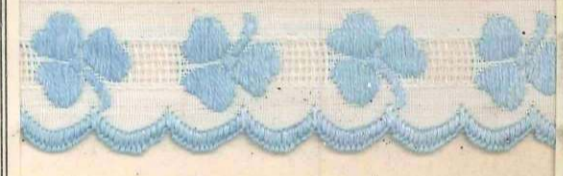
3



421



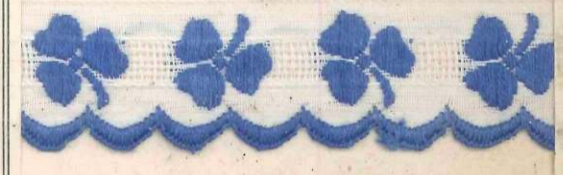
420



184



42



58



9



5



HAUTE NOUVEAUTÉ



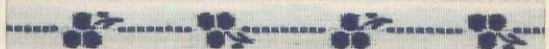
Sample ID	Color	Pattern
24606 5/20 01	Red	Red dots on a horizontal line
24607 5/20 01	Red	Red diamonds on a horizontal line
24608 5/20 01	Red	Red wavy line
03	Blue	Blue dots on a horizontal line
03	Blue	Blue diamonds on a horizontal line
03	Blue	Blue wavy line
0420	Light Blue	Light blue dots on a horizontal line
0420	Light Blue	Light blue diamonds on a horizontal line
0420	Light Blue	Light blue wavy line
0421	Pink	Pink dots on a horizontal line
0421	Pink	Pink diamonds on a horizontal line
0421	Pink	Pink wavy line
0422	Dark Blue	Dark blue dots on a horizontal line
0422	Dark Blue	Dark blue diamonds on a horizontal line
0422	Dark Blue	Dark blue wavy line
850	Light Green	Light green dots on a horizontal line
850	Light Green	Light green diamonds on a horizontal line
850	Light Green	Light green wavy line
0105	Purple	Purple dots on a horizontal line
0105	Purple	Purple diamonds on a horizontal line
0105	Purple	Purple wavy line
05	Black	Black dots on a horizontal line
05	Black	Black diamonds on a horizontal line
05	Black	Black wavy line

HAUTE NOUVEAUTÉ

24688
9
5/20
01



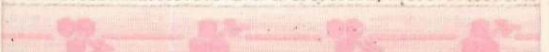
03



0420



0421



042



850



0105



05



24435
9
2/90
1



421



420



104



42



85



9



5



24436
9
3/90
1



421



420



104



42



85



9



5



HAUTE NOUVEAUTÉ

GES. GESCH.

24289
9
2/90



3



421



420



104



42



58



9



5



24290
9
3/99



3



421



420



104



42



58



9



5



24604
9
4/20



03



0421



0420



09



05



1



3



421



420



9



5





HAUTE NOUVEAUTÉ

DES BRESCH

1834

01

02

03

04

05

06

07

08

09

1

2

3

4

5

1834

01

02

03

04

05

06

07

08

09

1834

01

02

03

04

05

06

07

08

09



HAUTE NOUVEAUTÉ

GES. GESCH.

1443
9
1443



3



1441



1430



144



142



141



9



1435



5



1443
9
1443



3



1441



1430



144



142



141



9



1435



5



1443
9
1443



3



1441



1430



144



142



141



9



1435



5



HAUTE NOUVEAUTÉ

GES. GESCH.

24454

9
490
1



3



421



420



184



42



58



9



1725



5



26637

9
425
1



3



421



42



5



1153



1154



1155

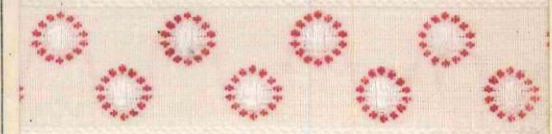


1189

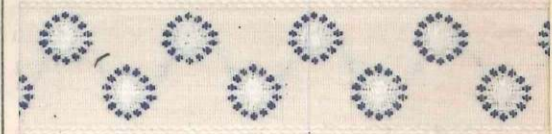


28225

9
390
1



3



421



420



9

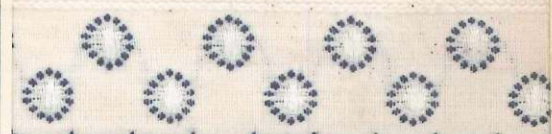


28226

9
540
1



3



421



420



5



HAUTE NOUVEAUTÉ

GES. GESCH.

24533

3/90



3



420



421



42



58



24539

3/90



03



0421



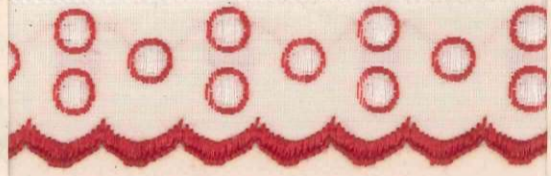
042



05



1



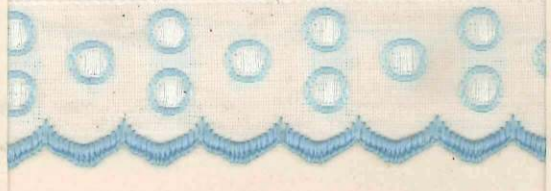
3



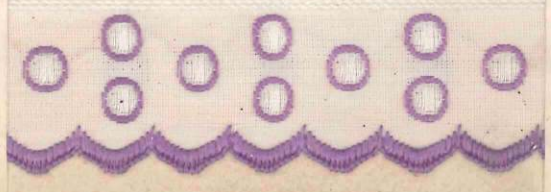
421



420



9

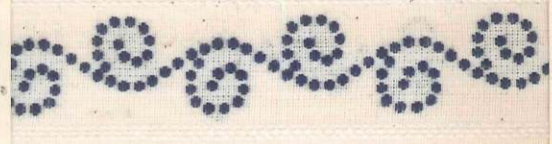


24544

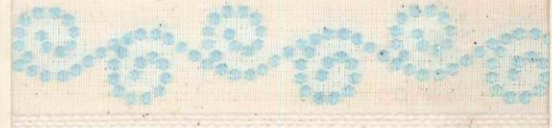
3/90



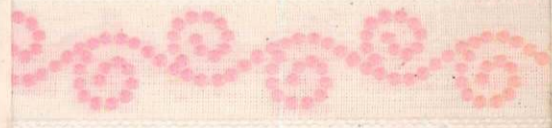
3



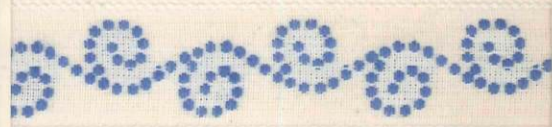
420



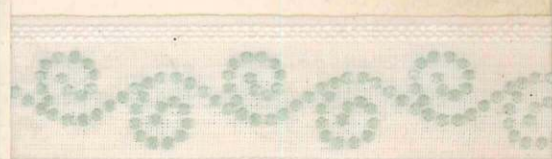
421



42



58



HAUTE NOUVEAUTÉ

GES. GESCH.

24534
9
5/40
01



03



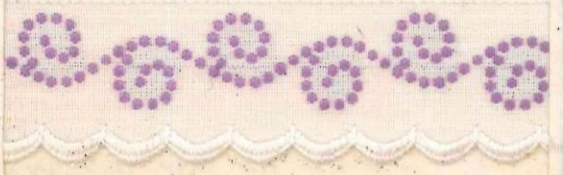
0421



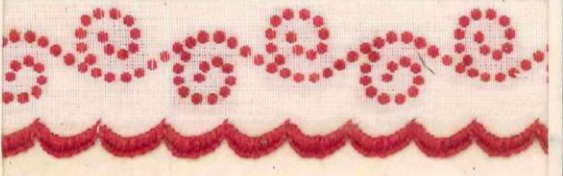
0420



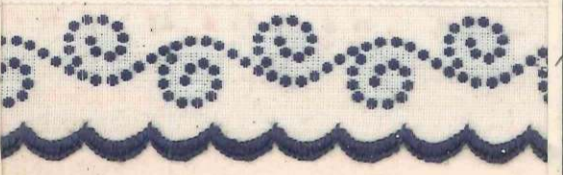
09



1



3



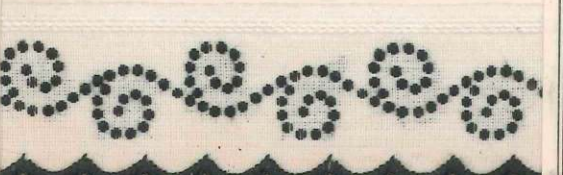
421



420



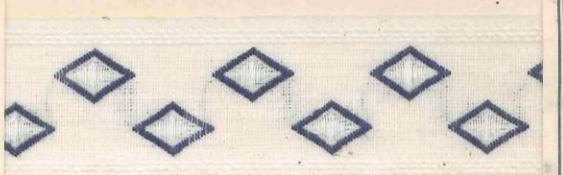
5



38145
9
3/40
1



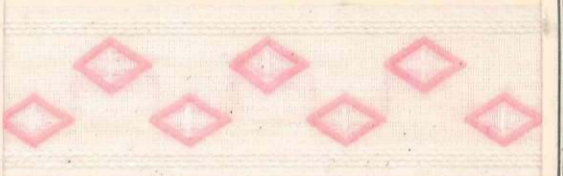
3



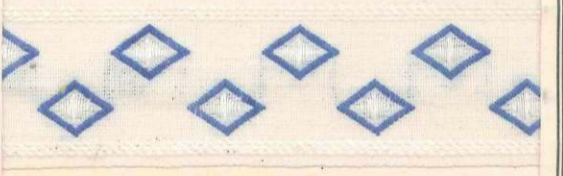
420



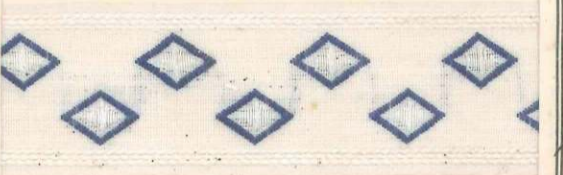
421



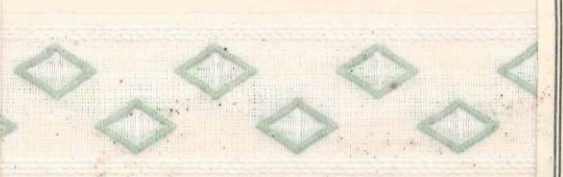
42



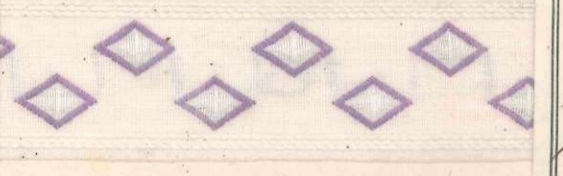
93



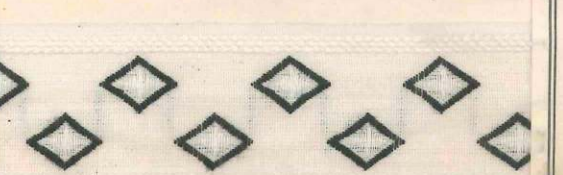
58



9



5



28146
9
5/40
1



3



420



421



42



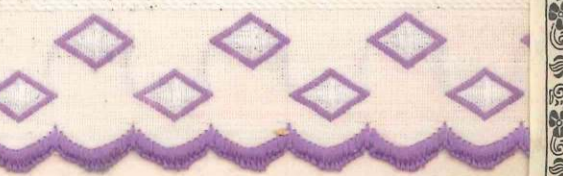
93



58



9



5





HAUTE NOUVEAUTE

GES. GESCH.

1903
9
3/10
1



3



4/30



4/31



4/2



5/8



1903
9
5/10
1



03



04/21



04/30



09



1



3



4/31



4/20



5



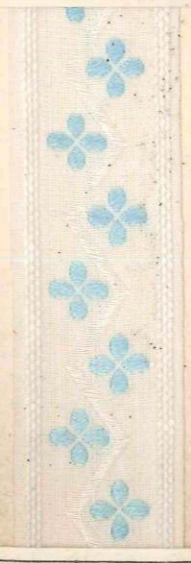
1903
9
3/10
1



3



4/30



4/31

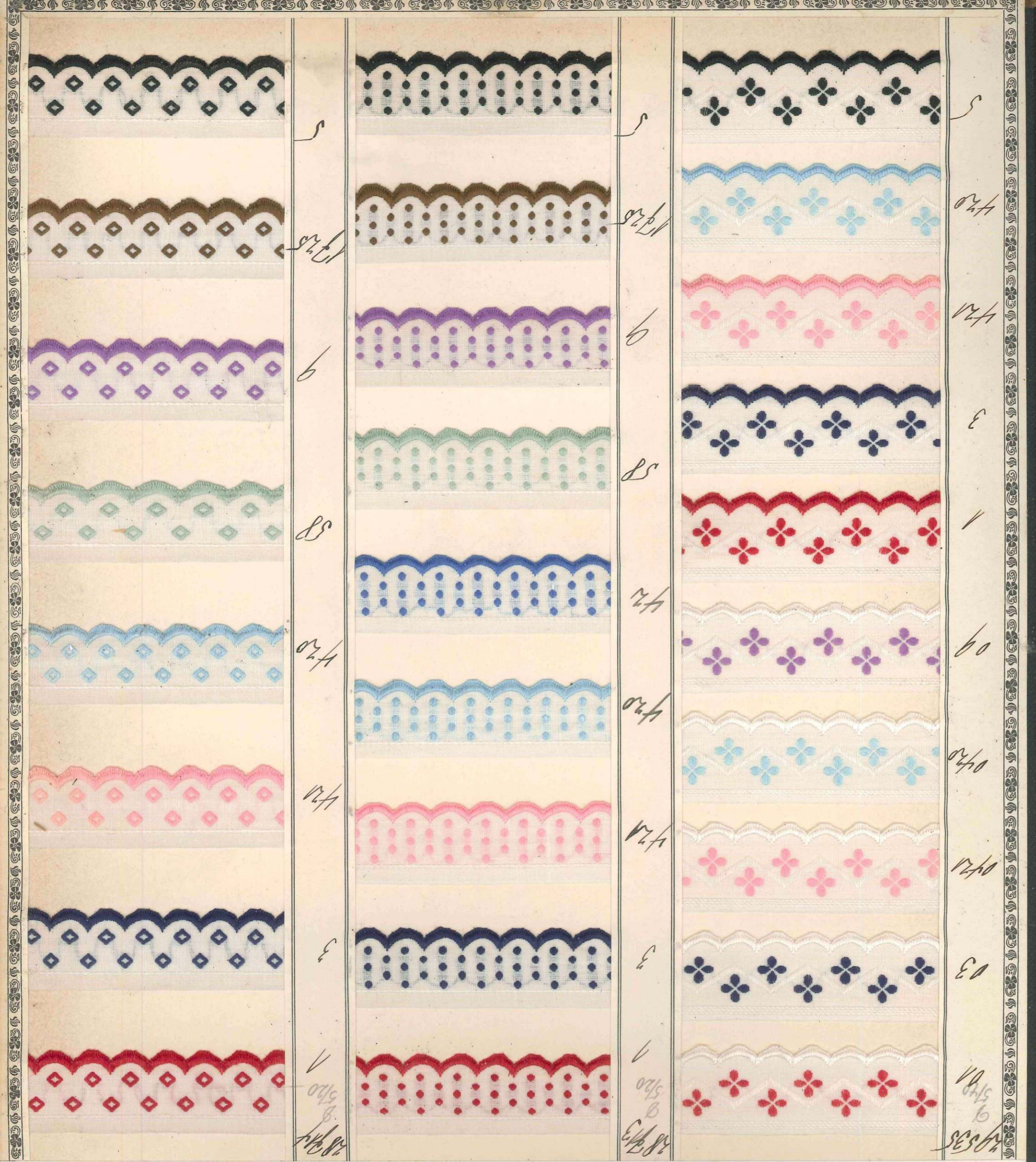


4/2



5/8





HAUTE NOUVEAUTÉ

GES. GESCH.

3849
9
3/601



3



420



421



9



5



38410
9
5/1



3



421



420



9



5



38407
9
3/60



3



420



421



93



9



38408
9
5/1



3



404



420



58



9



38448
9
3/52



3



421



420



104



42



58



9



1725



5



HAUTE NOUVEAUTÉ

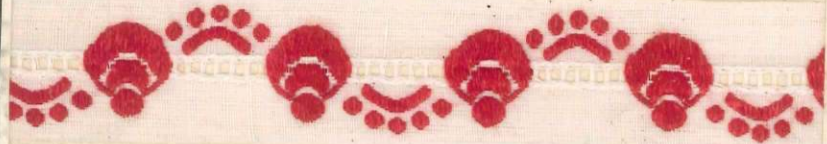
GES. GESCH.

Sample No.	Color	Pattern	Sample No.	Color	Pattern	Sample No.	Color	Pattern
2944 9/520/1	Red	Zigzag with scalloped bottom	2944 9/520/1	Red	Floral leaves	2945 9/520/1	Red	Floral leaves
3	Dark Blue	Zigzag with scalloped bottom	3	Dark Blue	Floral leaves	3	Dark Blue	Floral leaves
421	Pink	Zigzag with scalloped bottom	421	Pink	Floral leaves	421	Pink	Floral leaves
420	Light Blue	Zigzag with scalloped bottom	420	Light Blue	Floral leaves	420	Light Blue	Floral leaves
194	Light Red	Zigzag with scalloped bottom	194	Light Red	Floral leaves	194	Light Red	Floral leaves
42	Dark Blue	Zigzag with scalloped bottom	42	Dark Blue	Floral leaves	42	Dark Blue	Floral leaves
58	Light Green	Zigzag with scalloped bottom	58	Light Green	Floral leaves	58	Light Green	Floral leaves
9	Purple	Zigzag with scalloped bottom	9	Purple	Floral leaves	9	Purple	Floral leaves
1725	Brown	Zigzag with scalloped bottom	1725	Brown	Floral leaves	1725	Brown	Floral leaves
5	Black	Zigzag with scalloped bottom	5	Black	Floral leaves	5	Black	Floral leaves

HAUTE NOUVEAUTÉ

GES. GESCH.

42393
3/52



3



421



420



184



42



58



9



5



42365
3/50



3



421



420



184



42



58



9



5



HAUTE NOUVEAUTÉ

GES. GESCH.

24293
3/20



3



421



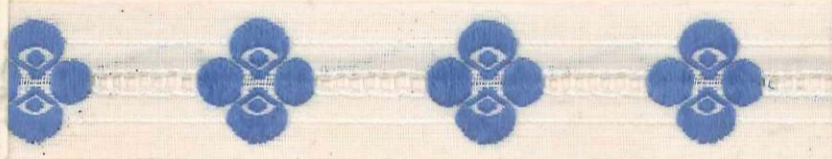
420



104



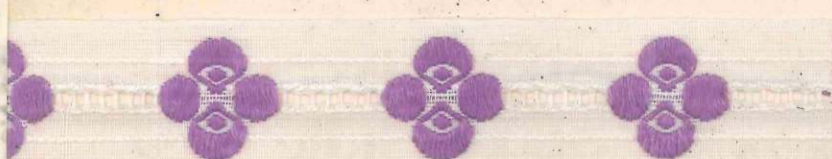
421



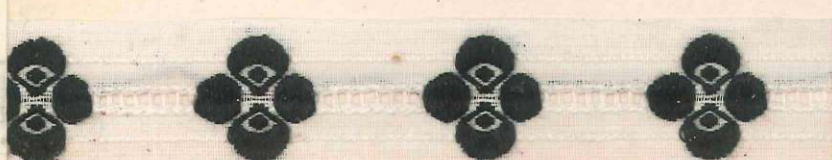
58



9



5



24294
3/20
1



3



421



420



104



421



58



9



5



HAUTE NOUVEAUTÉ

GES GESCH.

24377
440



3



421



420



184



42



58



9



5



24378
440



3



421



420



184



42



58



9



5



HAUTE NOUVEAUTÉ

GES. GESCH.

24374
9
4/35
1



3



421



420



104



42



58



9



5



24380
9
4/30
1



3



421



420



104



42



58



9



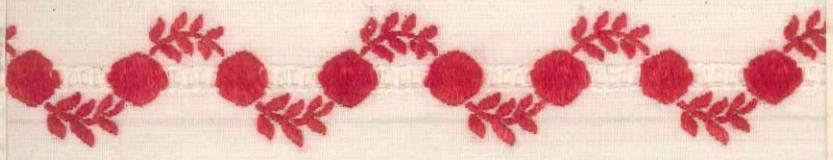
5



HAUTE NOUVEAUTÉ

GES. GESCH.

29295
9
450



3



421



420



104



42



58



9



1725



5



29296
9
5199



3



421



420



104



42



58



9



1725



5



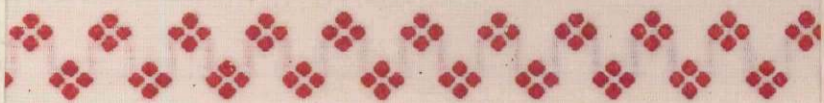
HAUTE NOUVEAUTÉ

GES. GESCH.

28480

9
4/60

1



3



421



420



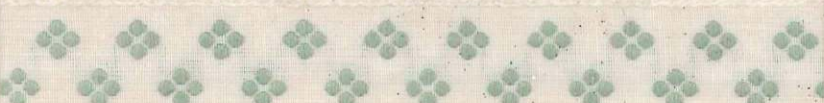
104



93



58



9



28481

9
4/60

1



03



0421



0420



09



1



3



421



420



5



HAUTE NOUVEAUTÉ

GES. GESCH.

28231

9/510

1



3



421



420



28232

9/510

1



3



421



420



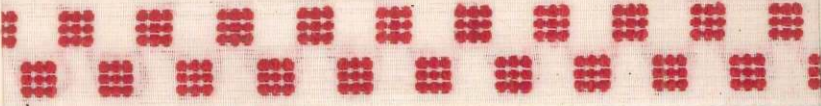
5



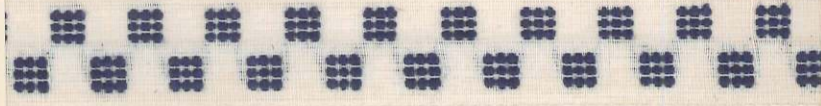
2819

4/60

1



3



421



4



28234

9/510

1



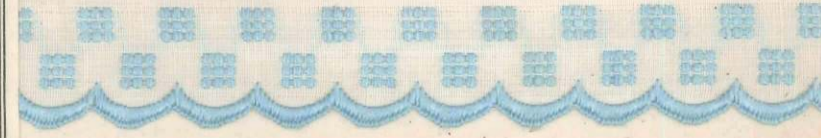
3



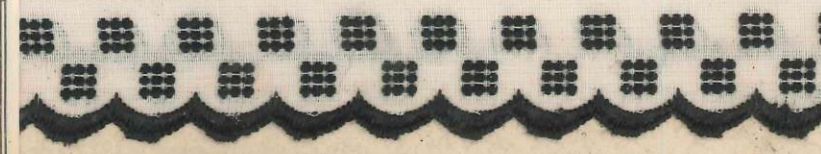
421



420



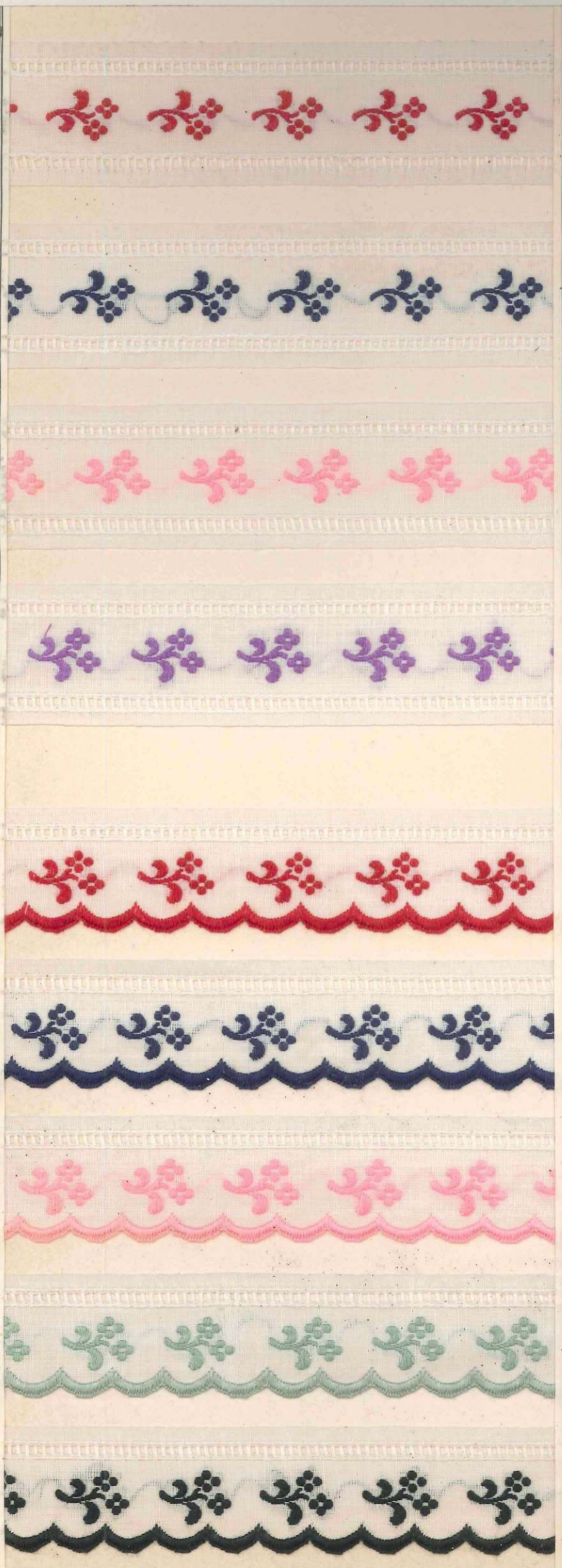
5



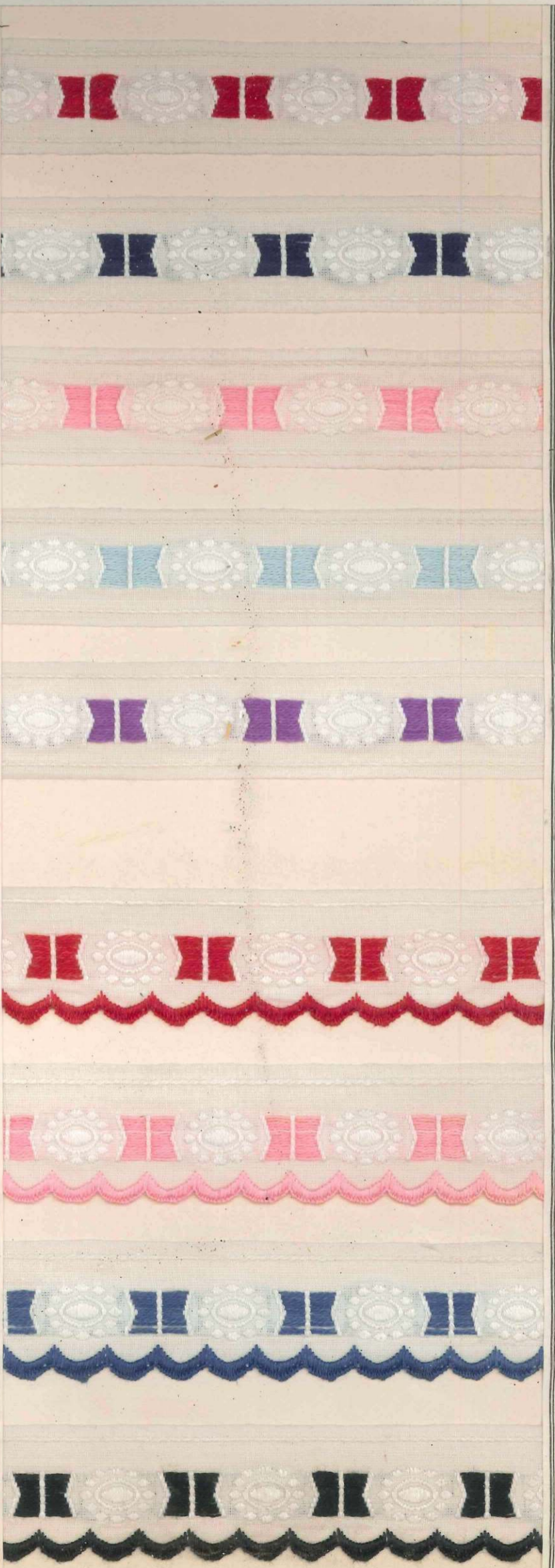
HAUTE NOUVEAUTÉ

GES. GESCH.

38229
9
460
1
3
421
9
38230
9
590
1
3
421
8
5



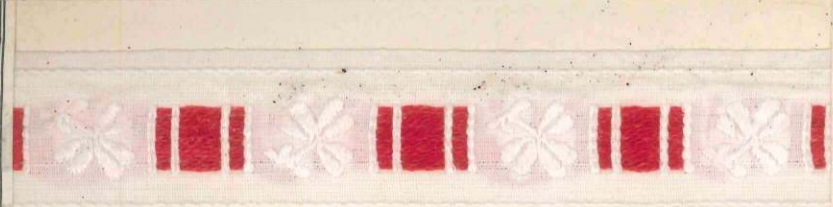
38095
9
440
3
421
420
9
38096
9
590
1
421
93
5



HAUTE NOUVEAUTÉ

GES. GESCH.

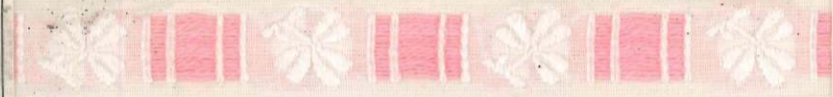
35708
4401



3



421



421



104



93



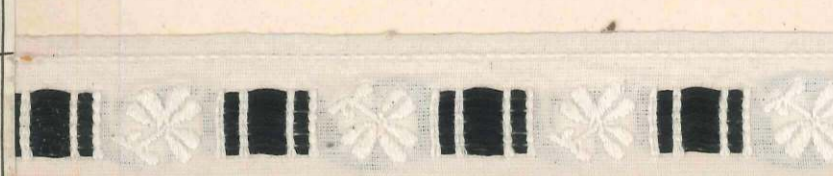
58



9



5



35817
5191



03



0420



1



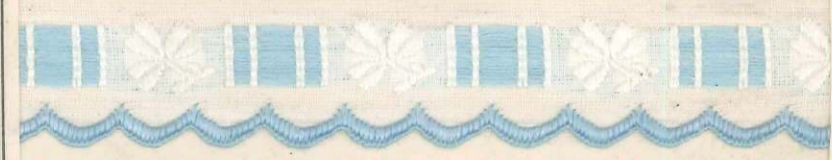
3



421



420



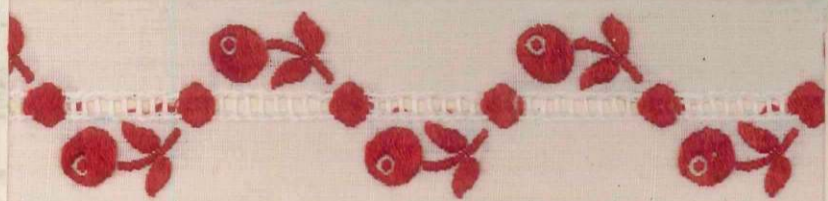
5



HAUTE NOUVEAUTÉ

GES. GE SCH.

28/29
9
4/90
1



3



4/20



28/30
9
7/10
1



3



4/21



4/20



58



28/52
9
4/90
1



3



4/20



28/27
9
4/100
1



4/20



4/21



9



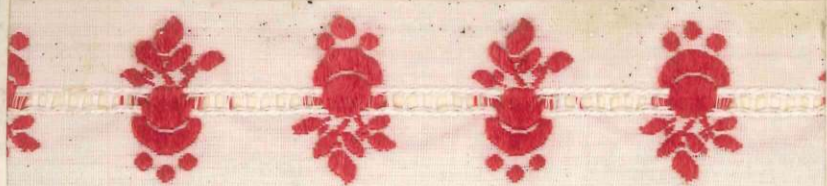
5



HAUTE NOUVEAUTÉ

GES. GESCH.

20689
9/190
1



3



421



420



20695
9/190
1



3



421



420



58



208199
9/190
1



3



421



420



208200
9/190
1



3



421



420



9



HAUTE NOUVEAUTÉ

GES. GESCH.

29490
10/

1



29490
10/

42



3



58



421



9



420



5



HAUTE NOUVEAUTÉ

GES. GESCH.



HAUTE NOUVEAUTÉ

