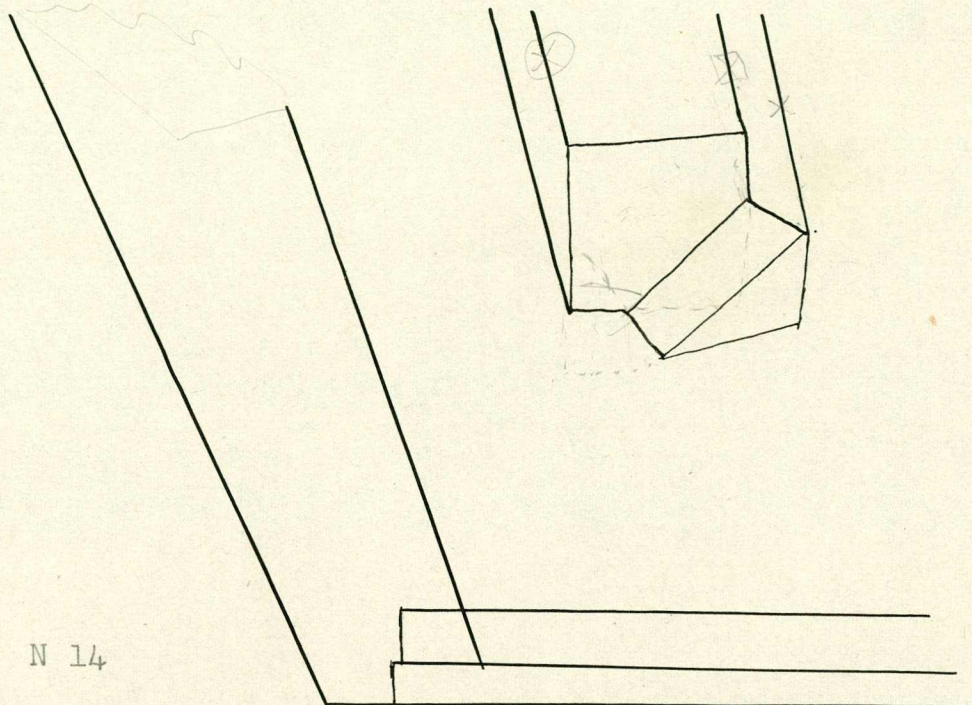


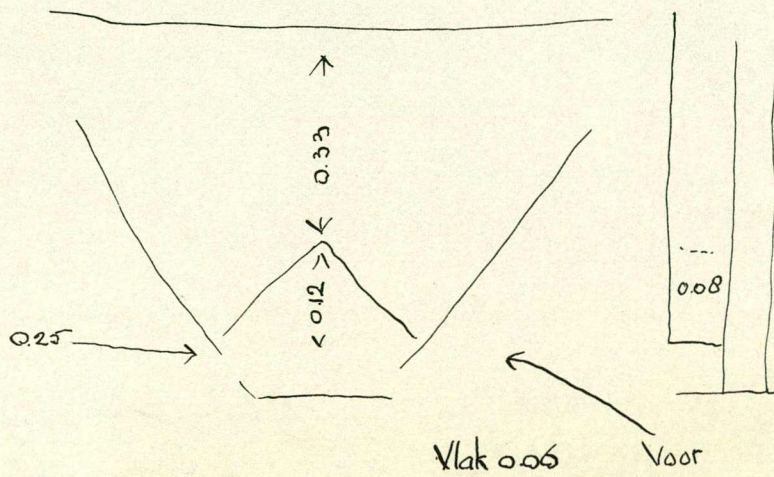
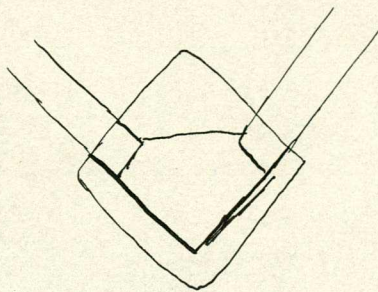
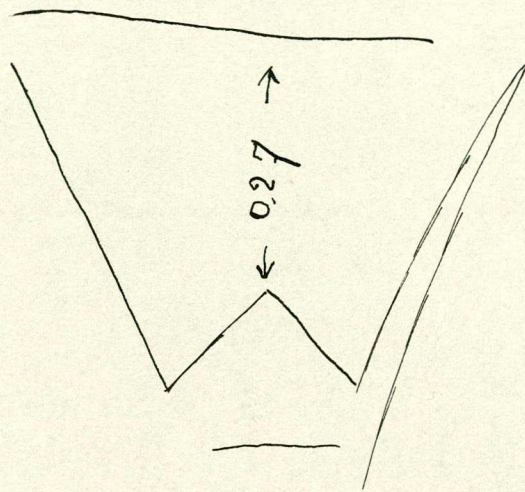
Voor schot 0.26 breed  
 voor legger tot boven 0.48 hoog  
 kolsum 0.07 dik  
 was dus onder 0.15 vrij  
 achter schot 0.25 breed  
 0.48 hoog  
 dus achter ook vrij





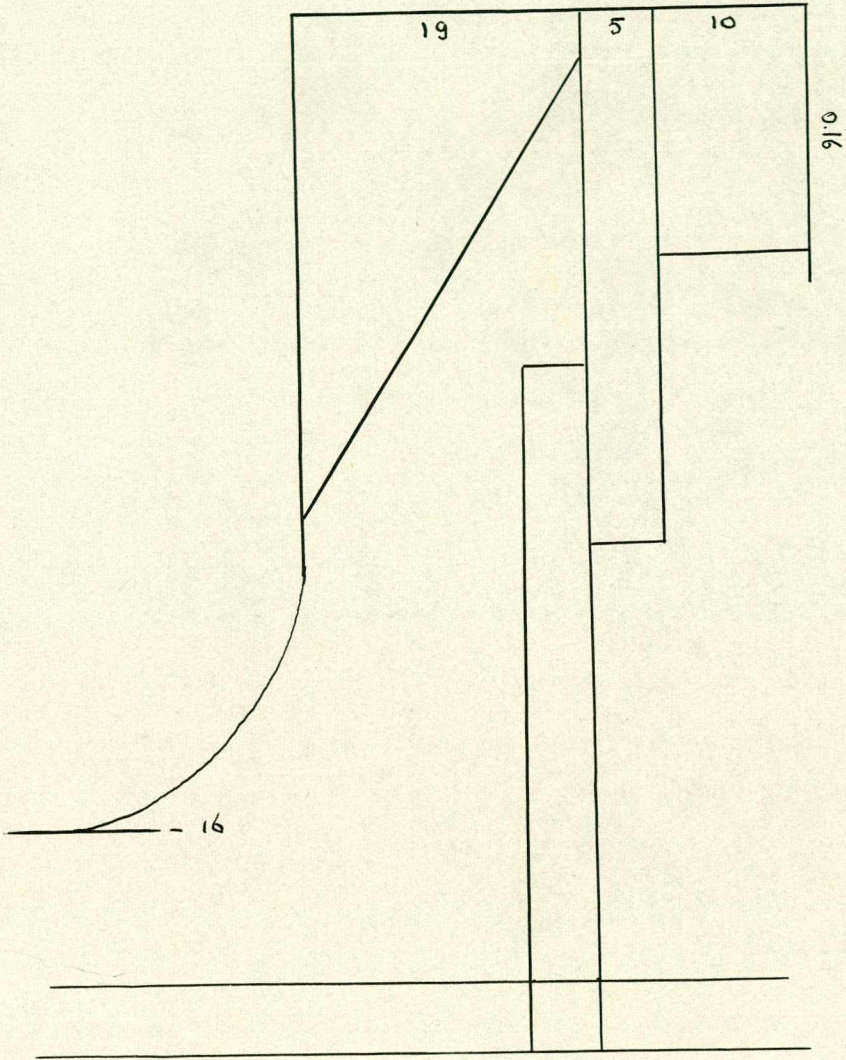
N 14



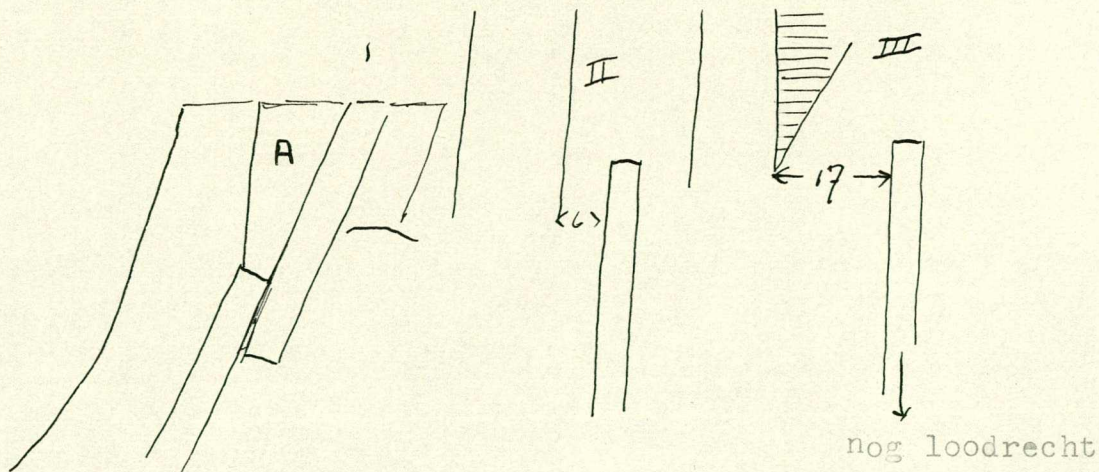




Praam kavel N 14 op 8.10  
Doorsnede kant met  
inhoud  
schaal 1 : ~~25~~  
F







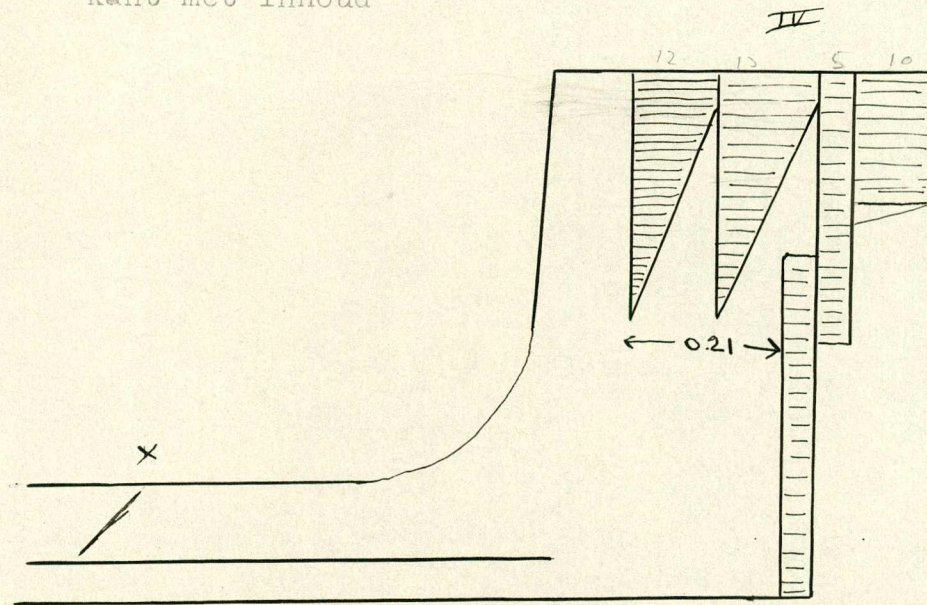
inhouten steken al  
 minder onder rand I staat tegen  
 zijkant aan terwijl hoek A opgevuld  
 wordt met bandstuk want binnekant  
 is voor evengoed nog loodrecht naar  
 beneden.



doorsnede op 3.25 Kavel N 14

schaal 1 a 10

kant met inhoud



x andere kant ook  
middelstuk ligt er op

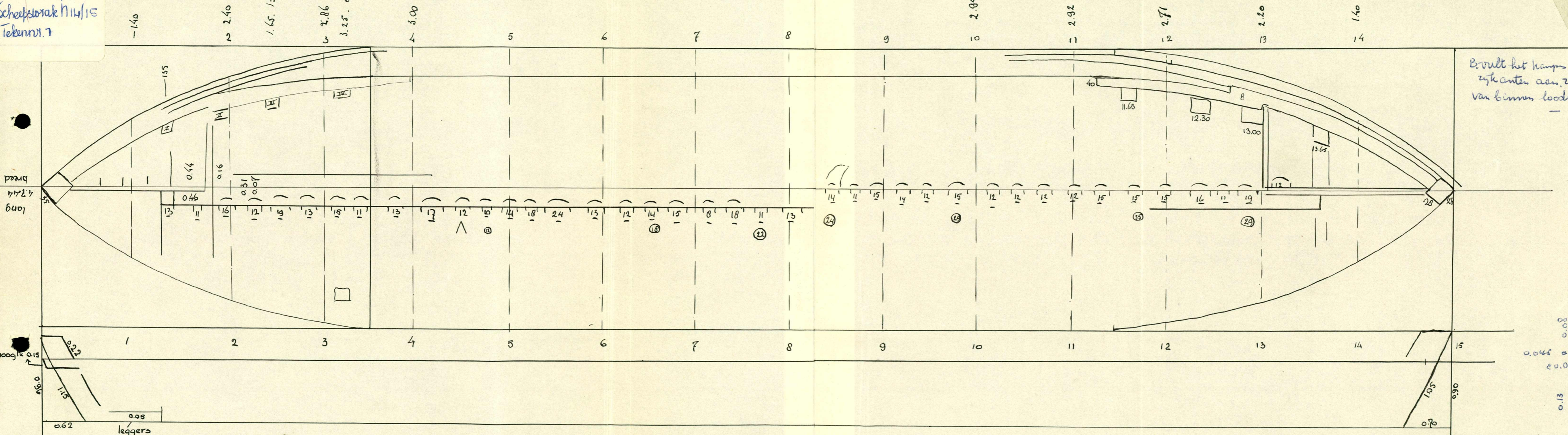


0.04 dekje had sponning in board  
 schot 0.075 met middel kiel

kalsum loopt tot 13.65

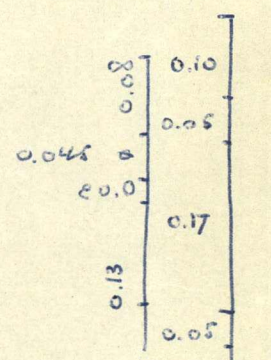
Plank 0.37 dik  
 dekbalkje ligt in sebot  
 en ingekeept in steven  
 weer sponning in band

Noordoostpolder  
 Scheepstorie N14/15  
 Tekennr. 7



B.vult het kamps van de  
 zijanten aan, zodat rand  
 van binnen loodrecht is

Kavel N 14 - 15

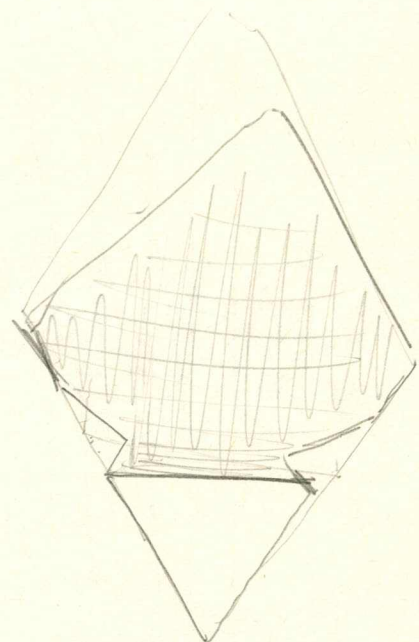
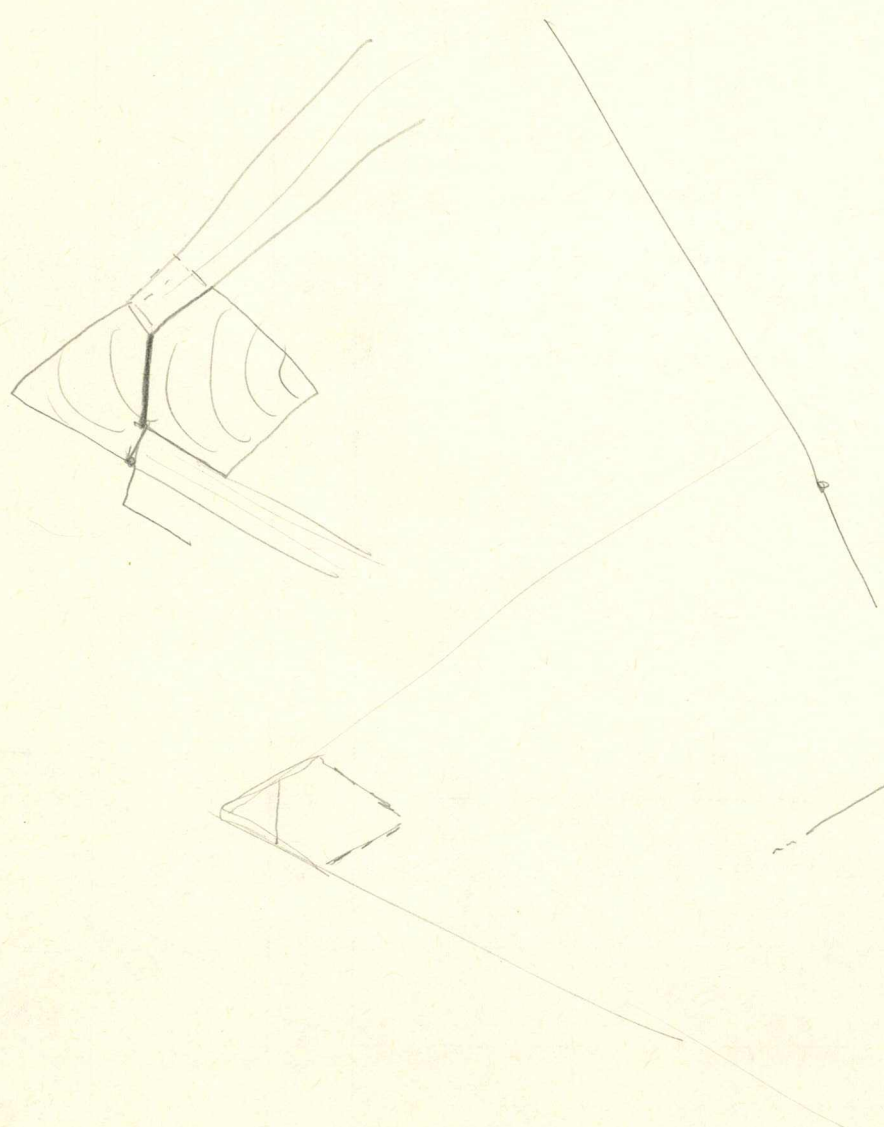
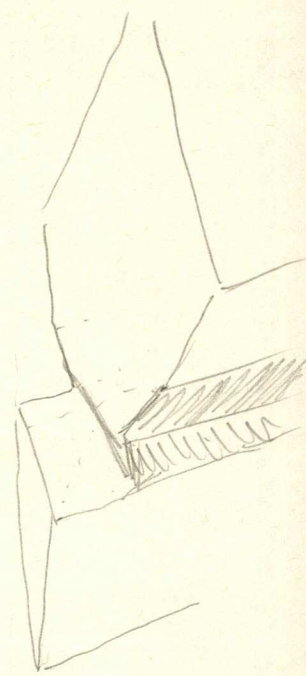
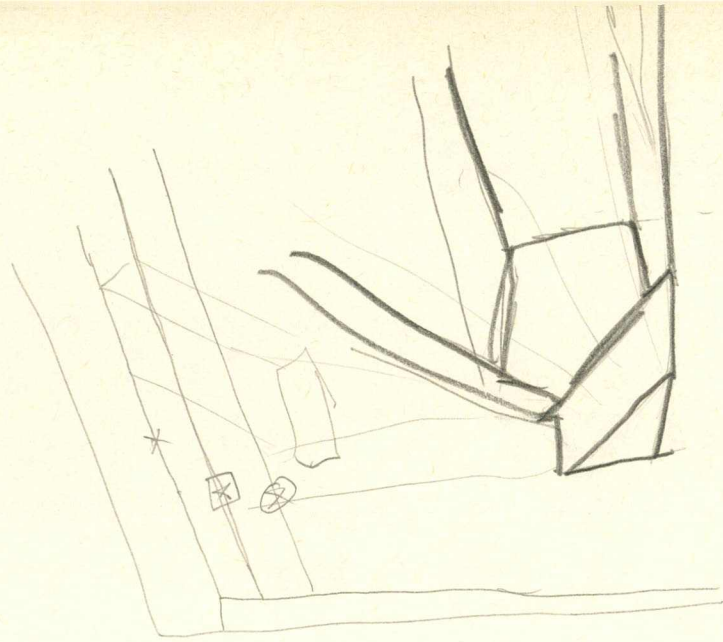


2.-  
 4.-







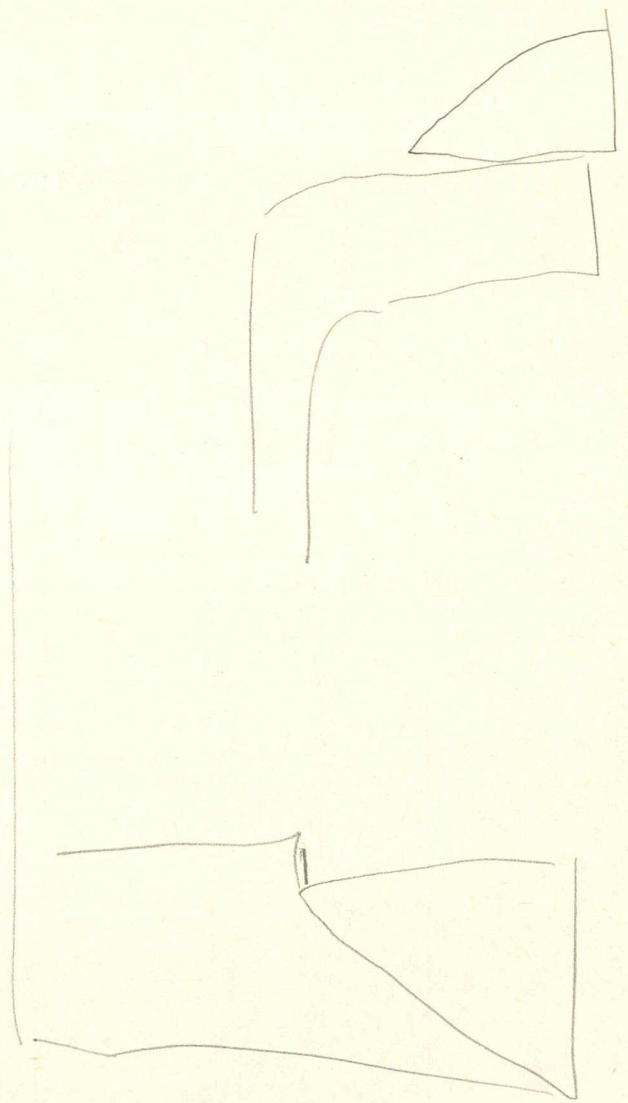








1000





120

0  
1  
2  
3  
4  
5  
6  
7  
8  
9  
10

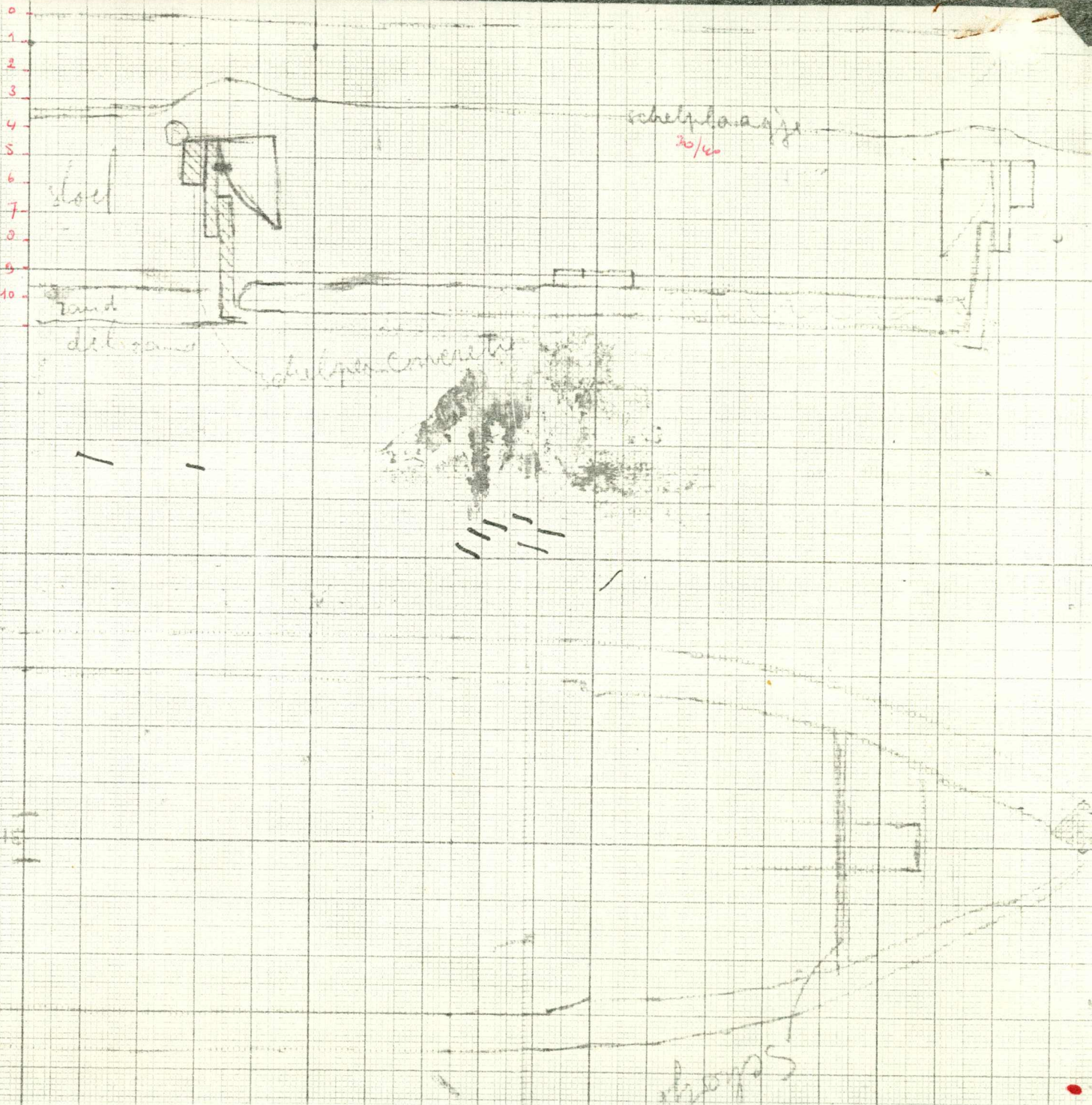
stiel

rand  
der wand

schelplage  
20/40

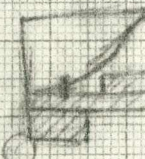
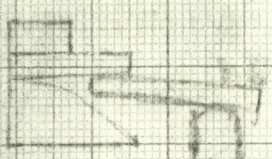
schelplage

schelplage





schelpsoort

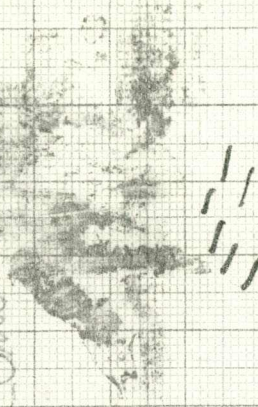


stod

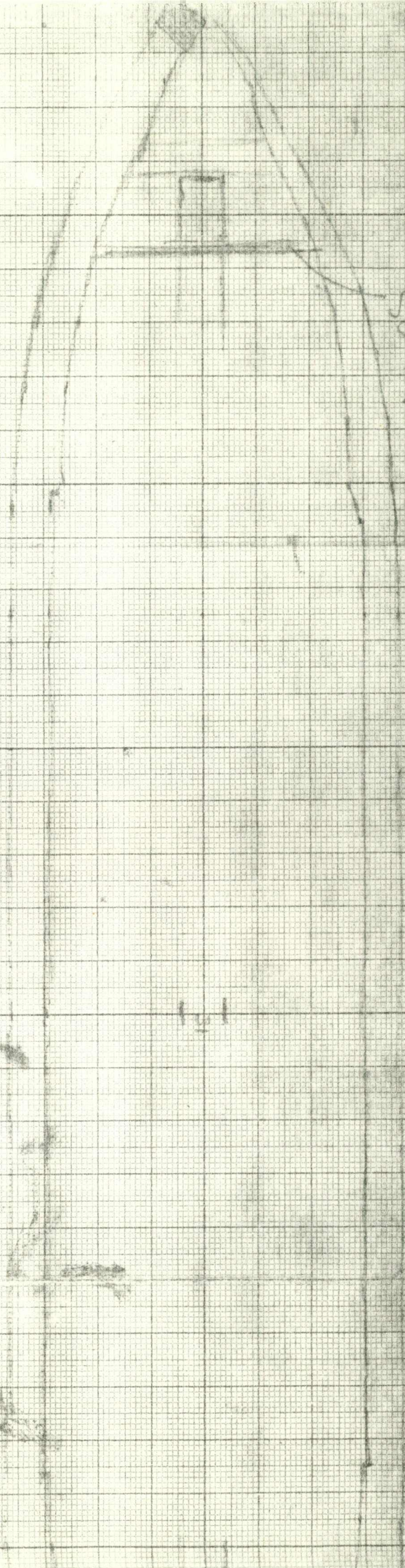
band

dit raam

schelpsoort



Schelpsoort



120







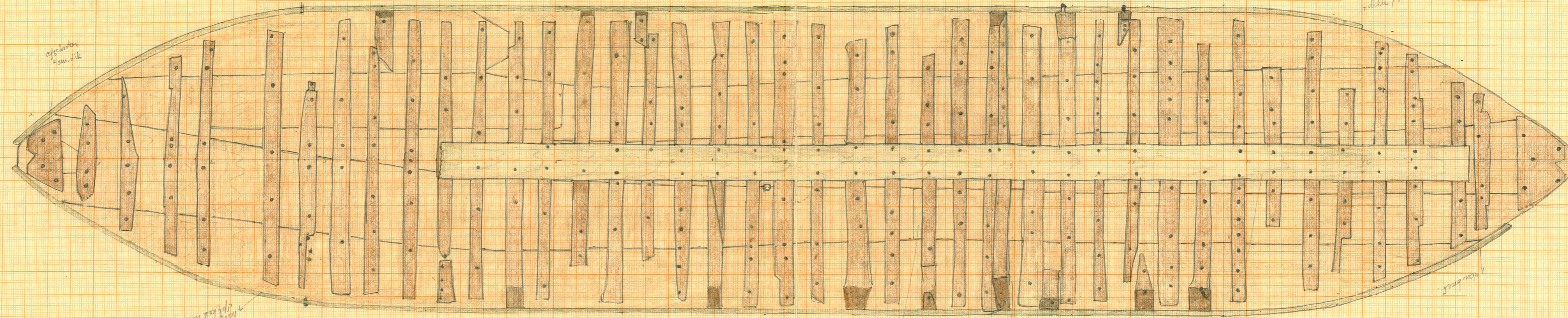
SCHIEDSOFGRAVING  
 N 14/15.  
 LIGGING NNO/ZZW.

TEKENING N<sup>o</sup> N14/15/

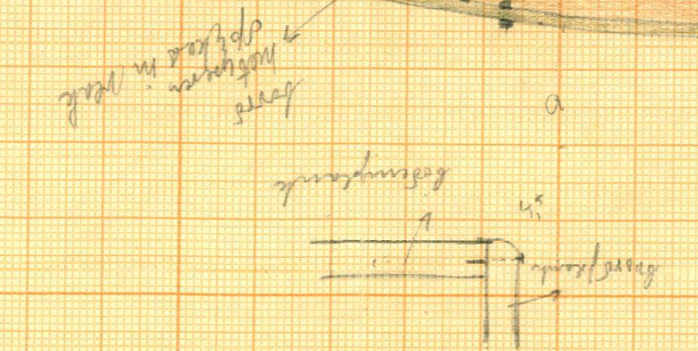
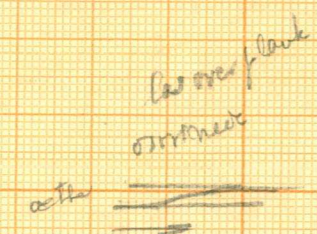
SCHAAL 1/20.  
 GETEKEND dd. 17/10/47

Maat 2.36 m. pashoop ygnis.  
 Schip 2.40

Noord-oostpolder  
 Schiep-sunak N14/15  
 Tekennr. 4



volksteren



las  
 beuken  
 dikte 7 cm

Schelpje onder de bij Camion  
 rechts van een



N-14/15

N<sup>o</sup> 12.

Scheepswrak

Mavel N.15

Maaiveld = 0

Noordoostpolder  
Scheepswrak N14/15  
Tekent. 5

Zavel

Zandlaag, met schelpen  $\div 0.50$   
 $\div 0.54$

Zand met klei gemengd  $\div 0.68$

Sluf

Wijgers

Zweeds

$\div 1.05$

grof zand  $\div 1.15$

Bodem

Rood zand  
Bodem wrak =  $\div 1.30$

Wrok

Schaal 1:10

Scheepswrak in sloot Mavel N-14-15

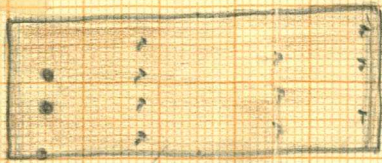
Lemstervaart - West 12-9-47







Schaal 1/20



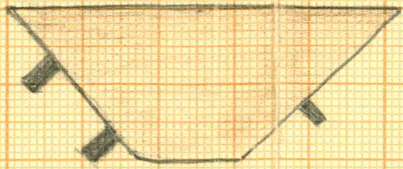
onderzijde te bepalen dikte 52

Scheepsofgraving N.W. 1/15  
Oct. 19 - 10. '49.

Noordoostpolder  
Scheepswrak N.W. 1/15  
Tekent. 1

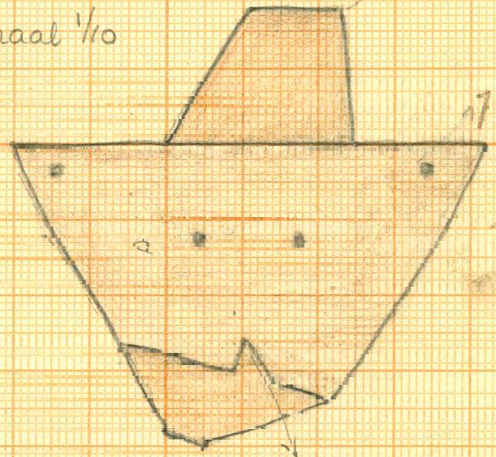
Schaal 1/20

dikte 12 cm

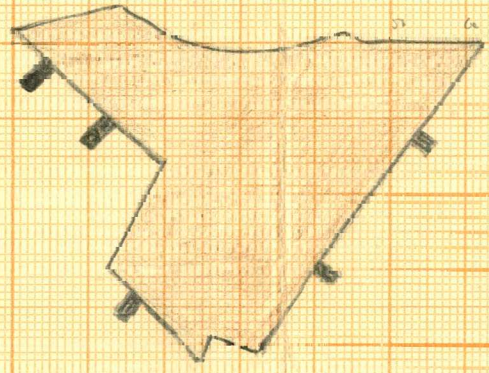


Schaal 1/10

plank van  
steek dikte 4 1/2

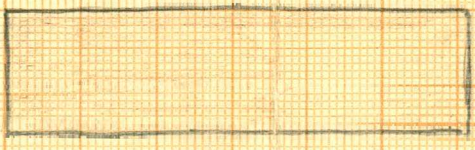


Schaal 1/10

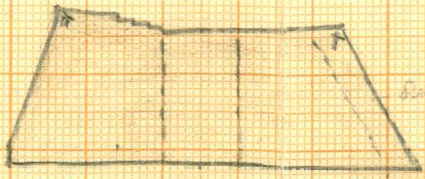


Stevenspunt  
sluit bevestiging  
horizontaal?

Schaal 1/10



Schaal 1/20



Stevenspunt

dikte 10 cm





massiveld 3.32 m - N.A.P.

SCHEEPSORGRAVING  
N  
P14/15 sloot ± 50 m  
VAN de O-WAND TOCHT.

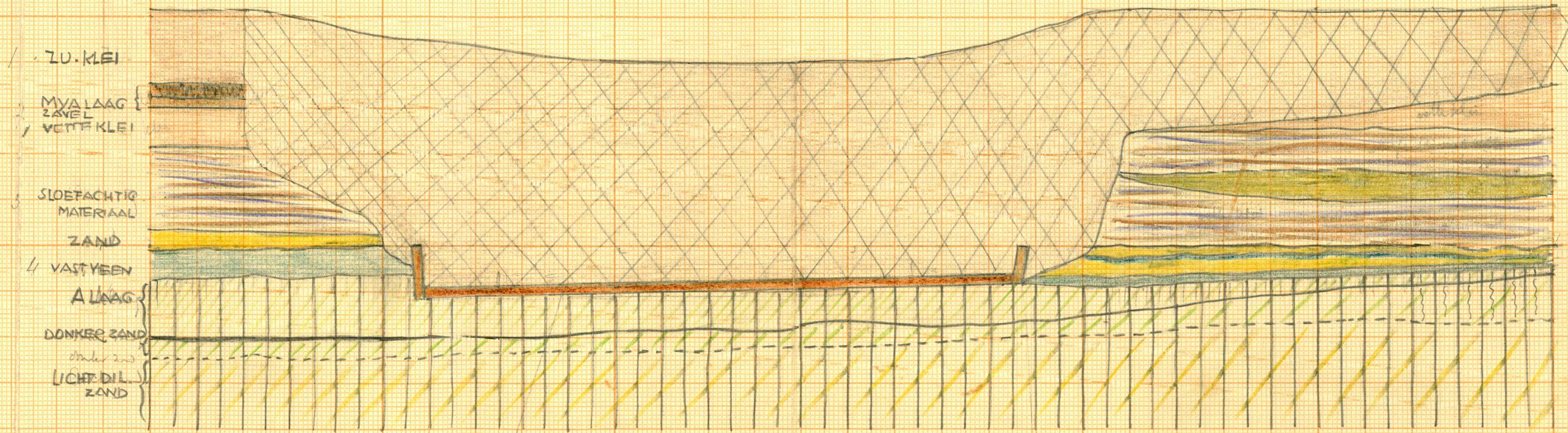
PROFIEL ZO-NW

SCHAAL 1/20

GET: 17/10/47 St

LIGGING SCHIP NO/ZW.

Noordoost polder  
Scheepswrak N14/15  
Tekennr. 2



ZO. ← NW.

17/10/47

St



N 14/15  
Swasthropiel.



SCHIEPSONDGRAYNG N 14/15.

OVERLANGSE DOORSNEDE  
NNO - ZZW.

TEKENING N° N 14/15/

SCHAAL 1/20  
GET. dd 17/10 47  
J.

ACHTERSCHIP

VORRESTEVEN

AANGEZEET STUKJE  
IN PLANK INGEFZET

LAS

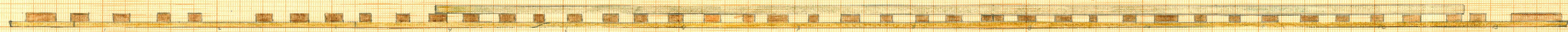
dik 4 1/2 cm

Noordoostpolder  
Scheepswaak N 14/15  
Tekening 3

ONDER SCHIP DILUVIAAL ZAND  
MET MIAAL VERGANE SCHELDINDRUKKEN  
(CALCIUM) - ZAND DEER HUMUSRIJK.

NNO

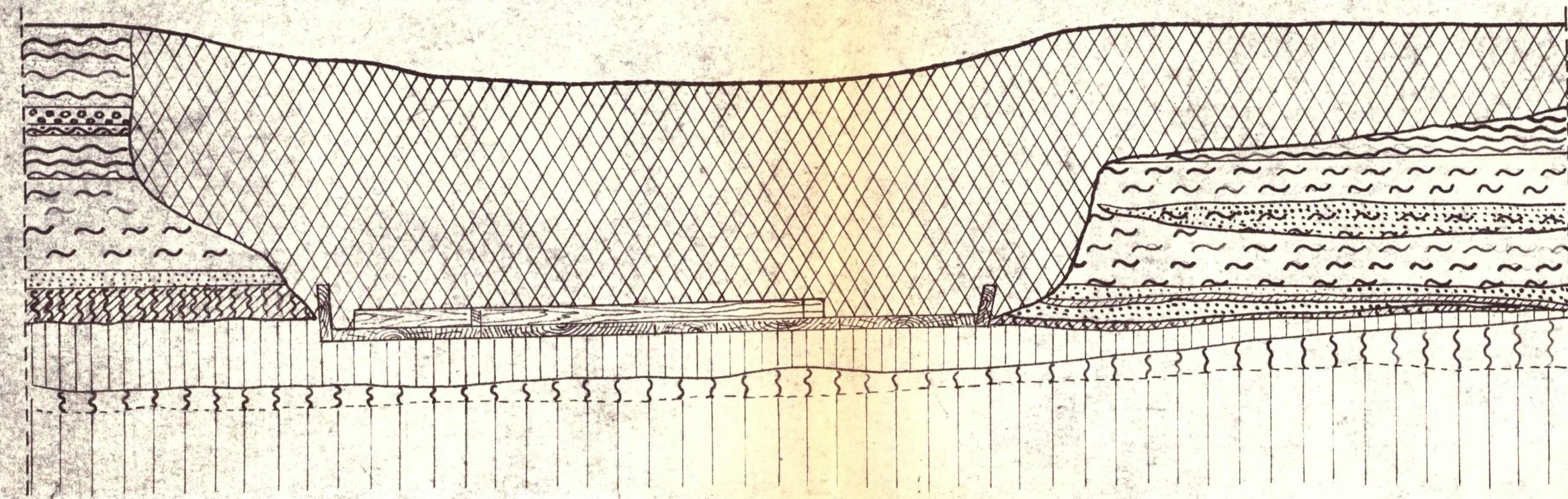
ZZW





# SCHEEPSVONDST N.14-15.

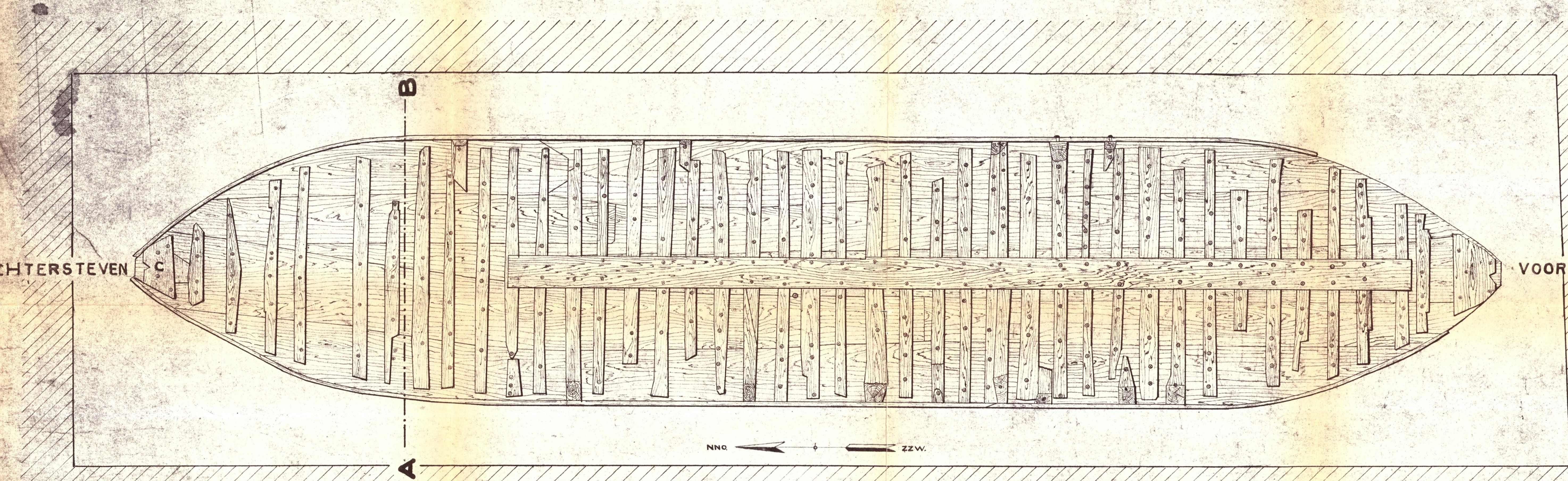
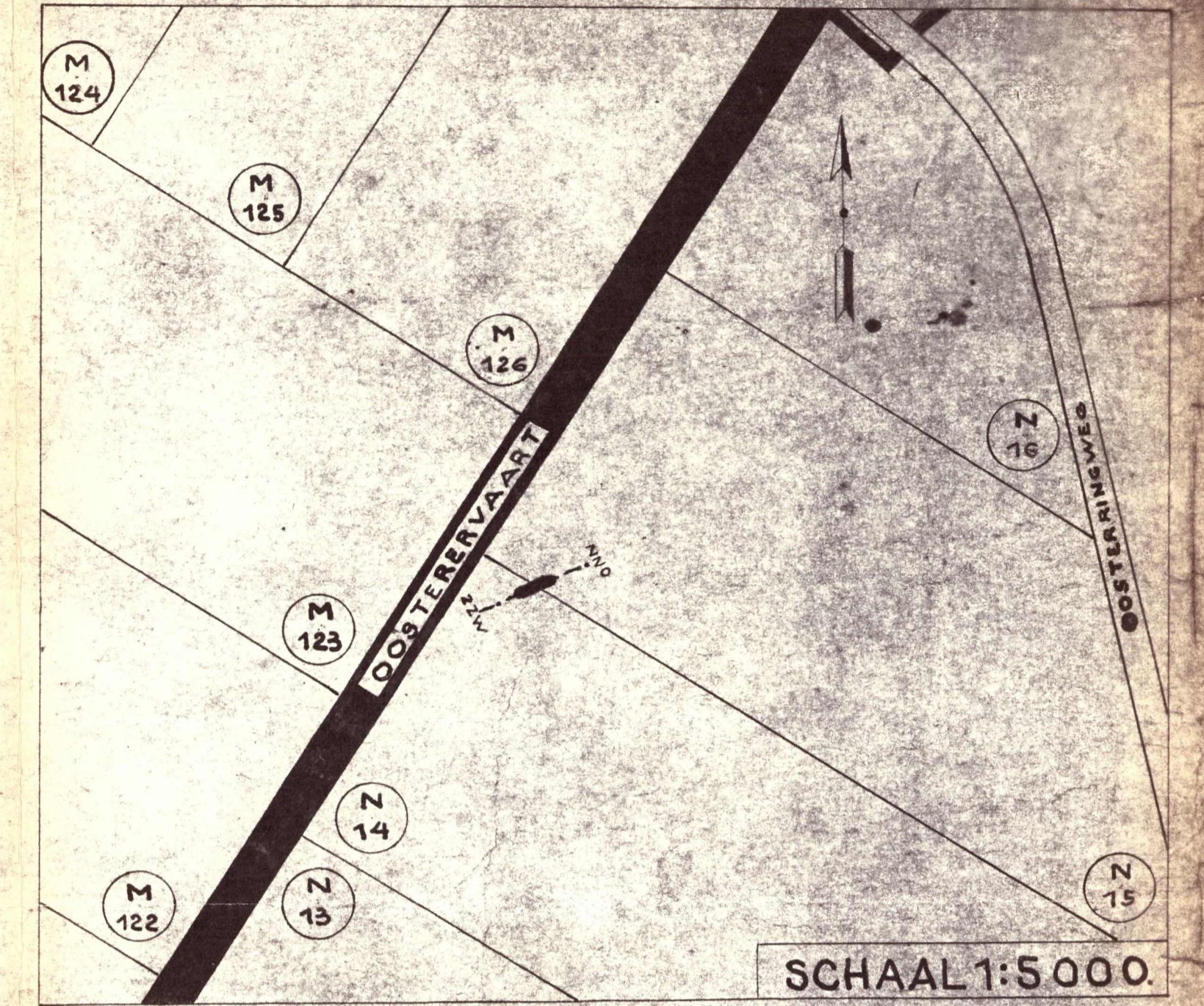
SCHAAL 1:20.



DOORSNEDE A-B.

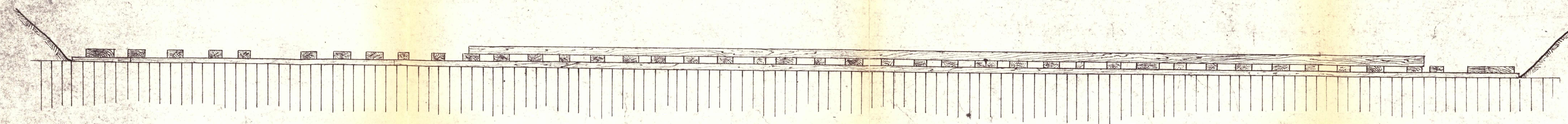
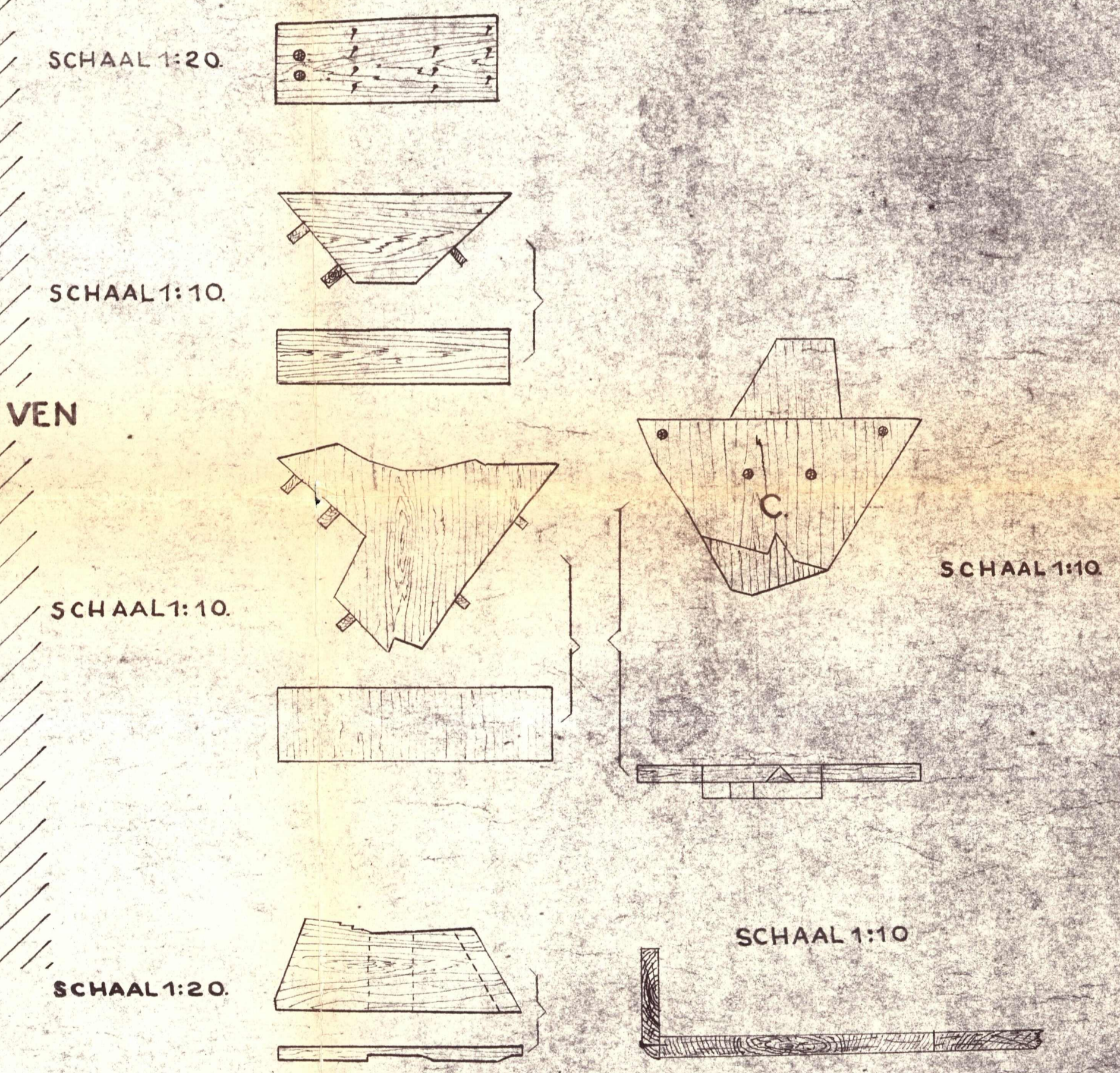
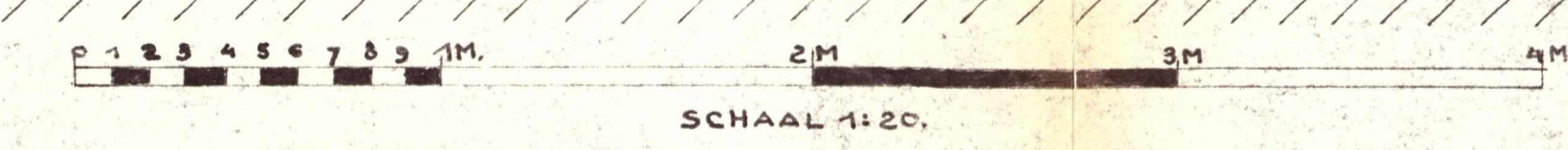
VERKLARING.

	VERWERKTE GROND.
	ZUIDERZEEKLEI.
	ZAVEL.
	SLOEFACHTIG MATERIAAL.
	ZAVELIGE SLOEF.
	ZAND.
	MYALAAG.
	VAST VEEN.
	A. LAAG.
	B. " }
	C. " }
	DILUVIAAL.



CHTERSTEVEN

VOORSTEVEN



LENGTEDOORSNEDE