

Dos Allegros
para Guitarra a solo.

p.^a D.ⁿ. Fernando Sor.

1121

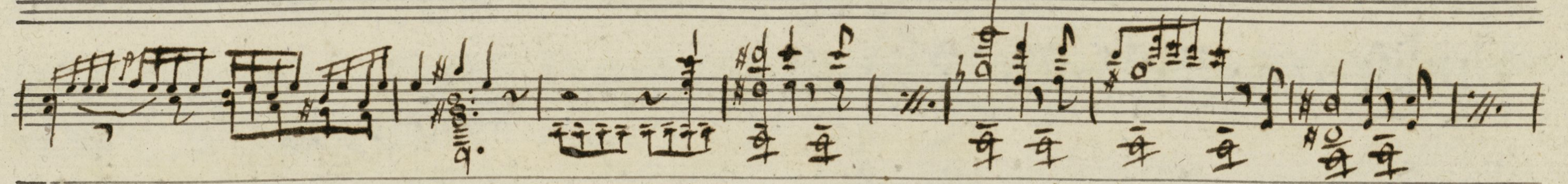
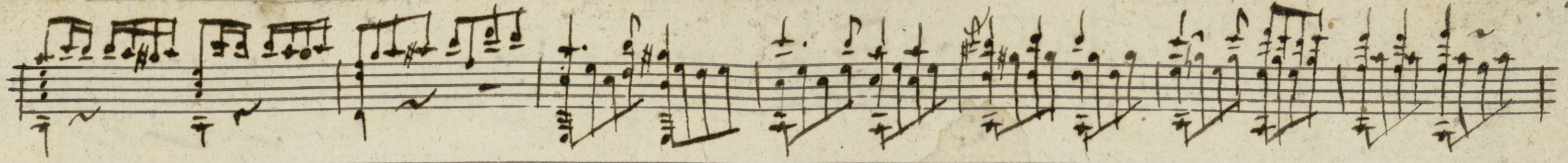
Mus

Sonata 1^a
And^{te}
a sexta se bava
a Re.

All^o

Arp.^o
Arpej.^o

Mus 726



Mus 724-16

perdendosi

simile

arp.

simile

Mus. 724-1

Mus 721-16

Handwritten musical notation on a single staff, featuring a melodic line with various notes and rests, and a bass line with chords and rhythmic patterns.

Handwritten musical notation on a double staff system. The upper staff contains a melodic line with notes and rests, while the lower staff contains a bass line with chords and rhythmic patterns. Includes the annotation "bis" and "arp.".

Handwritten musical notation on a double staff system. The upper staff contains a melodic line with notes and rests, while the lower staff contains a bass line with chords and rhythmic patterns. Includes the annotation "bis".

Handwritten musical notation on a double staff system. The upper staff contains a melodic line with notes and rests, while the lower staff contains a bass line with chords and rhythmic patterns. Includes the annotations "bis" and "arp.".

Handwritten musical notation on a double staff system. The upper staff contains a melodic line with notes and rests, while the lower staff contains a bass line with chords and rhythmic patterns. Includes the annotations "bis" and "arp.".

Handwritten musical notation on a double staff system. The upper staff contains a melodic line with notes and rests, while the lower staff contains a bass line with chords and rhythmic patterns.

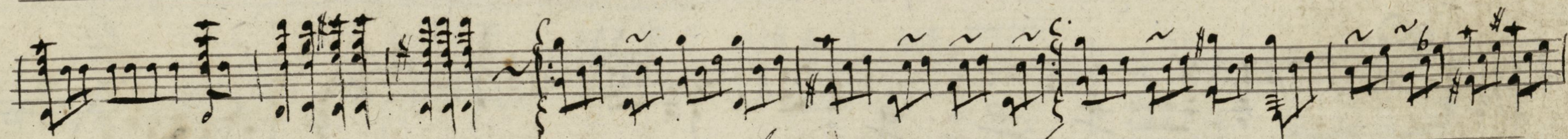
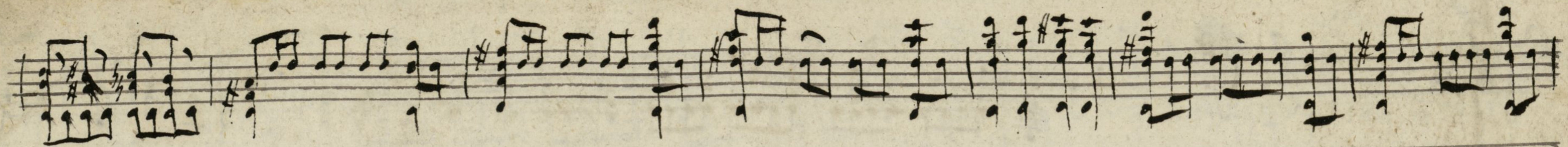
bis. *arp.* *bis.*

bis.

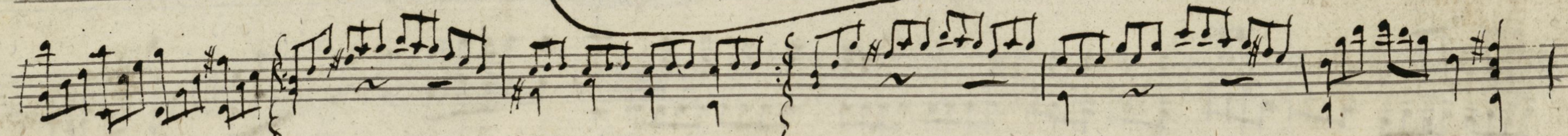
p. mo *morendo.*

Sonata 2^{da}
Alto

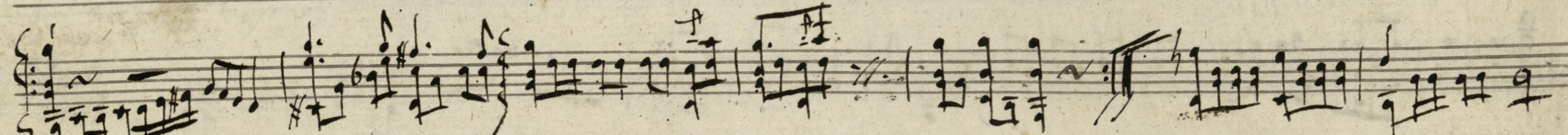
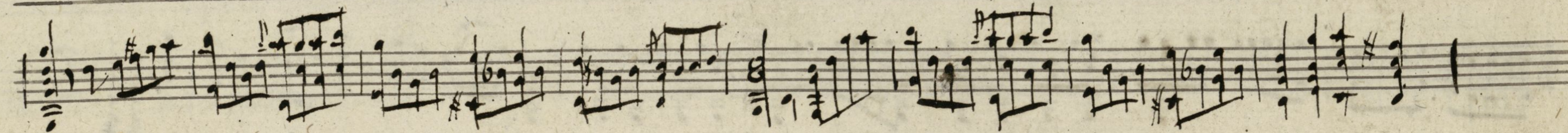
This image shows a page of handwritten musical notation for a piece titled "Sonata 2da" in the "Alto" register. The score is written on seven staves. The first staff begins with a treble clef and a common time signature (C). The notation is dense, featuring a variety of note values including eighth and sixteenth notes, as well as rests and accidentals. The subsequent staves continue the melodic and harmonic development of the piece, with some staves showing more complex rhythmic patterns and chordal structures. The handwriting is clear and consistent throughout the page.



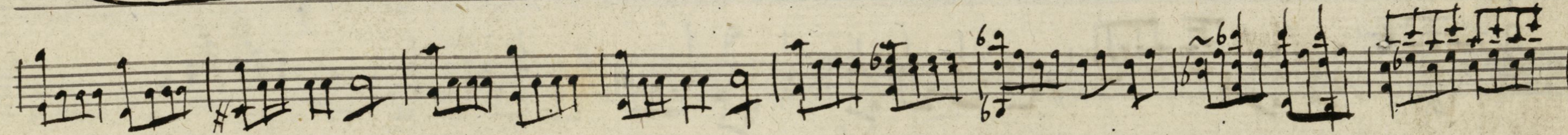
6is

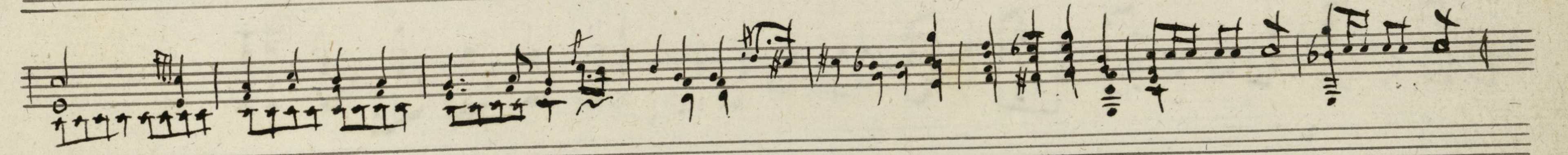
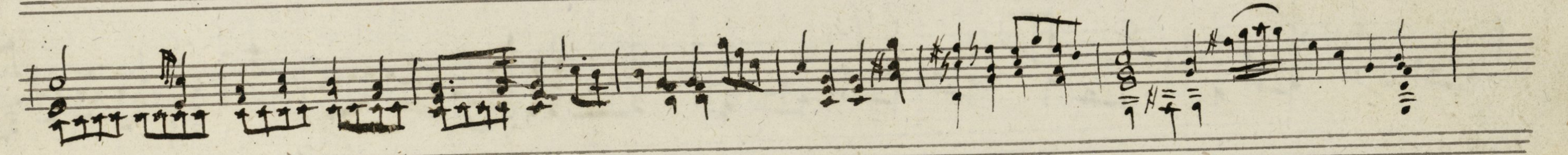
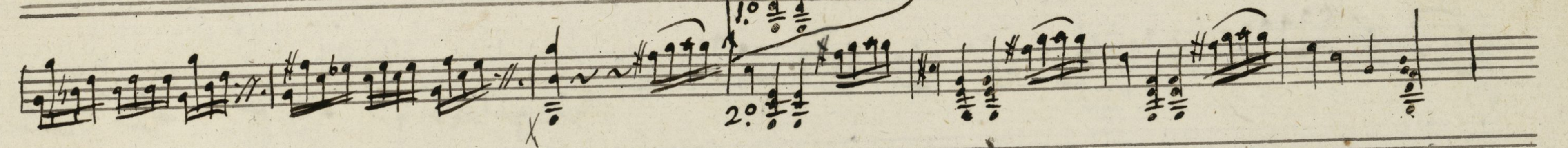
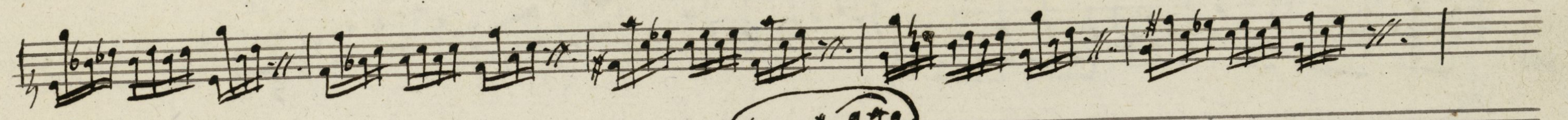
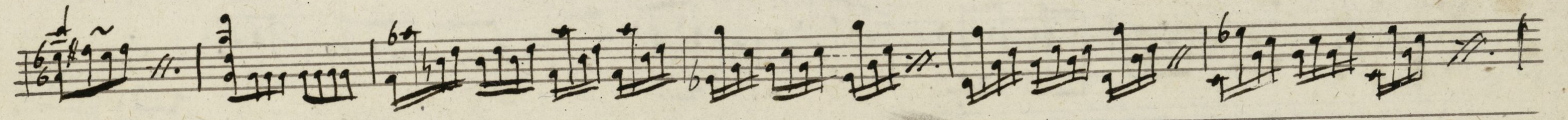
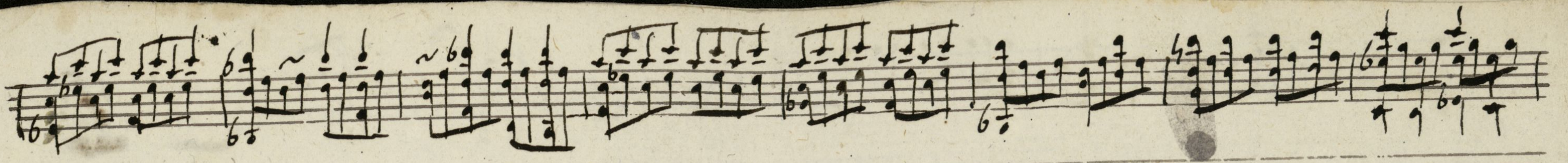


6is.



6is.





A handwritten musical score consisting of six staves. The notation is in black ink on aged, yellowish paper. The first staff begins with a treble clef and a common time signature (C). The music is written in a style characteristic of 18th or 19th-century manuscript notation, featuring various note values, rests, and accidentals. The second staff contains a series of chords and melodic lines. The third staff continues the composition with similar notation. The fourth staff shows a change in key signature, indicated by a sharp sign (F#). The fifth staff features a large bracketed section with the word "bis" written below it, suggesting a repeat or a specific performance instruction. The sixth staff concludes the piece with a double bar line and the word "fin." written below it.

