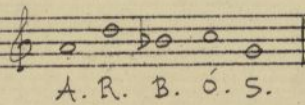


Fantasia

sobre cinco notas



Joaquín Turina



Ayuntamiento de Madrid

Al maestro Enrique F. Arbo, en el 40
aniversario de su nacimiento.

Fantasia

Sobre cinco notas

Con un apretado abrazo

Joaquín Guina

A. R. B. O. S.

Joaquín Guina
Op. 83.

Preludio

Andante

Handwritten musical score for 'Preludio' in 3/4 time. The score is written on two staves. The upper staff is in treble clef and the lower staff is in bass clef. The piece begins with a piano (pp) dynamic. The first staff contains a series of chords and arpeggios, with a 'p' dynamic marking. The second staff contains a series of eighth notes and quarter notes, with a 'pp' dynamic marking. The piece concludes with a 'Cresc' (Crescendo) marking and a 'mf' (mezzo-forte) dynamic marking. The score includes various musical notations such as slurs, accents, and dynamic markings.

Handwritten musical score for the first system. The top staff is a vocal line with a melodic line and a dashed line above it. The bottom staff is a piano accompaniment with chords and moving lines. The score includes the following annotations: *ga--* above the vocal line, *p dolcissimo* above the piano staff, and *pp* above the piano staff. The instruction *2 ped.* is written below the piano staff.

Handwritten musical score for the second system. The top staff is a vocal line with a melodic line and a dashed line above it. The bottom staff is a piano accompaniment with chords and moving lines. The score includes the following annotations: *ppp* above the piano staff.

II

Pocata y Fuga

Allegro molto

The first system of handwritten musical notation consists of two staves. The upper staff is in treble clef and the lower staff is in bass clef. The time signature is 4/4. The music begins with a treble clef and a 4/4 time signature. The melody in the treble clef starts with a quarter note G4, followed by eighth notes A4, B4, C5, and D5. The bass clef accompaniment starts with a half note chord of G2 and B2. The piece concludes with a double bar line and repeat dots.

The second system of handwritten musical notation also consists of two staves in treble and bass clefs. The melody in the treble clef continues with eighth notes E5, F5, G5, and A5. The bass clef accompaniment features chords and single notes. The system ends with a double bar line and repeat dots.

Handwritten musical notation for the first system. It consists of two staves: a treble staff and a bass staff. The treble staff contains a melodic line with various note values and rests, including a long phrase with a slur. The bass staff contains a bass line with chords and triplets. Above the treble staff, the word "energico" is written in italics. There are several accent marks (>) above notes in both staves. The key signature has two flats (B-flat and E-flat).

Handwritten musical notation for the second system. It consists of two staves: a treble staff and a bass staff. The treble staff continues the melodic line with a slur over the first few measures. The bass staff continues the bass line with chords and triplets. There are several accent marks (>) above notes. On the right side of the page, there is a red handwritten note that reads "rel no 22". The key signature has two flats (B-flat and E-flat).

Handwritten musical notation for the third system. It consists of two staves: a treble staff and a bass staff. The treble staff continues the melodic line with a slur over the first few measures. The bass staff continues the bass line with chords and triplets. There are several accent marks (>) above notes. On the right side of the page, there is a red handwritten note that reads "rel no 22". The key signature has two flats (B-flat and E-flat).

Handwritten musical notation for the first system, featuring treble and bass staves with various notes, rests, and dynamic markings like accents (>) and slurs.

Handwritten musical notation for the second system, including a "P subito" marking and a "p" dynamic marking, with complex melodic lines and chordal accompaniment.

Handwritten musical notation for the third system, showing further melodic development and harmonic support with various accidentals and dynamics.

Ayuntamiento de Madrid

The first system of handwritten musical notation consists of two staves. The upper staff is in treble clef and contains a series of chords and melodic fragments, with a large slur spanning across several measures. The lower staff is in bass clef and features a melodic line with several triplet markings (indicated by the number '3' above the notes) and some chordal accompaniment.

The second system of handwritten musical notation consists of two staves. The upper staff is in treble clef and shows a melodic line with triplet markings and various accidentals. The lower staff is in bass clef and contains a melodic line with some chordal accompaniment. There are some handwritten annotations, including a '4' and a '90', possibly indicating fingerings or specific notes.

The third system of handwritten musical notation consists of two staves. The upper staff is in treble clef and contains a series of chords and melodic fragments, with a large slur spanning across several measures. The lower staff is in bass clef and features a melodic line with several triplet markings and some chordal accompaniment.

Handwritten musical notation for the first system. The top staff is in treble clef and contains a melodic line with a long slur over the first four measures. The bottom staff is in bass clef and provides accompaniment. The key signature has one sharp (F#). There are dynamic markings like accents (>) and hairpins ($\hat{>$).

Handwritten musical notation for the second system. The top staff continues the melodic line with a slur. The bottom staff features more complex rhythmic patterns, including triplets and sixteenth notes. There are various accidentals and dynamic markings.

Handwritten musical notation for the third system. The top staff has a *Cresc.* marking above it. Both staves feature triplet figures and other rhythmic motifs. The notation includes many accidentals and dynamic markings.

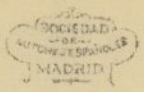
Ayuntamiento de Madrid

Lento *Moderato*

Handwritten musical score for the first system. It consists of two staves: a piano staff (treble clef) and a bass staff (bass clef). The tempo is marked *Lento* and *Moderato*. The piano staff begins with a triplet of chords, followed by a series of chords and a melodic line. Dynamics include *dim*, *mf*, *p*, *pp*, and *mf*. The bass staff provides harmonic support with chords and a melodic line. A marking *8a. bassa* is present at the bottom right of the system.

Handwritten musical score for the second system. It consists of two staves: a piano staff (treble clef) and a bass staff (bass clef). The piano staff features a melodic line with various intervals and a long slur. The bass staff provides a supporting line with chords and a melodic line.

Handwritten musical score for the third system. It consists of two staves: a piano staff (treble clef) and a bass staff (bass clef). The piano staff features a melodic line with various intervals and a long slur. The bass staff provides a supporting line with chords and a melodic line. Dynamics include *cresce* and *marcato*.



Handwritten musical score for the first system, consisting of two staves. The music is in a key with one flat (B-flat) and a common time signature. The upper staff features a melodic line with various note values and rests, while the lower staff provides a harmonic accompaniment with chords and bass notes. Handwritten annotations include 'cres' in the middle of the first staff and 'marcato' in the lower staff towards the end of the system.

Handwritten musical score for the second system, also consisting of two staves. This system continues the piece with more complex rhythmic patterns and dynamic markings. The upper staff has a melodic line with a 'ga-' annotation above it. The lower staff includes a 'cres' marking and a 'marcato' marking. The music shows a variety of chordal textures and melodic movements.

Handwritten musical score for the third system, consisting of two staves. The music continues with similar harmonic and melodic structures. The lower staff features several long, sustained chords, suggesting a slower or more contemplative section of the piece.

Ayuntamiento de Madrid



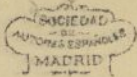
Allegro molto

enérgico

Ayuntamiento de Madrid



Ayuntamiento de Madrid



III

Coral con Variaciones

Andante

Handwritten musical score for the first system, consisting of two staves. The music features complex chordal textures with many accidentals (flats and naturals) and melodic lines. A large slur covers the first two measures. The notation includes various rhythmic values and dynamic markings.

Handwritten musical score for the second system, consisting of two staves. It includes dynamic markings such as *cresc* and *p poco sordato*. The music features a triplet of eighth notes in the second measure of the upper staff. The notation is dense with accidentals and complex rhythmic patterns.

Handwritten musical score for the third system, consisting of two staves. It features dynamic markings *cresc molto* and *dim molto*. The music includes a triplet of eighth notes in the second measure of the upper staff. The notation is highly detailed with many accidentals and complex rhythmic structures.

Ayuntamiento de Madrid

1^a Var.
Moderato

Handwritten musical score for the first system. It consists of two staves: a treble staff and a bass staff. The treble staff begins with a treble clef and a key signature of one flat (B-flat). The music is marked *Moderato* and *mf*. The bass staff begins with a bass clef and a key signature of one flat. The system contains four measures of music, with various note values and rests. A large slur covers the first two measures of the treble staff. The second measure of the bass staff has a '1' above it, and the third measure has '1 5' above it.

Handwritten musical score for the second system. It consists of two staves: a treble staff and a bass staff. The treble staff begins with a treble clef and a key signature of one flat. The music is marked *cresc* and *sfz*. The bass staff begins with a bass clef and a key signature of one flat. The system contains four measures of music, with various note values and rests. A large slur covers the first two measures of the treble staff. The second measure of the bass staff has a '1' above it, and the third measure has '1 5' above it.

Handwritten musical score for the third system. It consists of two staves: a treble staff and a bass staff. The treble staff begins with a treble clef and a key signature of one flat. The music is marked *dim* and *cresc*. The bass staff begins with a bass clef and a key signature of one flat. The system contains four measures of music, with various note values and rests. A large slur covers the first two measures of the treble staff. The second measure of the bass staff has a '1' above it, and the third measure has '1 5' above it.

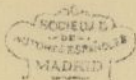
Handwritten musical score for the first system. The top staff is in treble clef and the bottom staff is in bass clef. The music consists of several measures with notes, rests, and chords. Dynamic markings include *ff* and *cresc*. There are also some handwritten annotations like *ga* above the top staff.

Handwritten musical score for the second system. The top staff is in treble clef and the bottom staff is in bass clef. The music continues with notes and chords. Dynamic markings include *ff* and *alargando*. There are also some handwritten annotations like *ga* above the top staff.

Handwritten musical score for the third system. The top staff is in treble clef and the bottom staff is in bass clef. The music continues with notes and chords. Dynamic markings include *Andante* and *dim*. There are also some handwritten annotations like *ga* above the top staff.

2^a Var.

Allegretto



sin precipitar

cresc

ff

Cedendo

Andante

f

3

3

3a bassa

dim

P pero sonoro

9.

9.

3a bassa

3a bassa

Ayuntamiento de Madrid



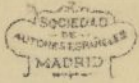


Handwritten musical score on two staves. The top staff contains a melodic line with various accidentals and dynamics. The bottom staff contains a bass line with chords and notes. Handwritten annotations include "8a" above the first measure, "lentamente" above the third measure, and "cresc" above the fifth measure. There are also some circled areas and a "3" above a triplet in the fifth measure.

Handwritten musical score on two staves. The top staff continues the melodic line, and the bottom staff continues the bass line. A "cresc" annotation is present above the first measure of the second system. The piece concludes with a double bar line and a fermata.

Madrid - 16 de Marzo - 1934

Joaquín Turina



SOCIEDAD
DE
MÚSICA ESPAÑOLA
MADRID

Ayuntamiento de Madrid

