



Bodleian Libraries

UNIVERSITY OF OXFORD

This book is part of the collection held by the Bodleian Libraries and scanned by Google, Inc. for the Google Books Library Project.

For more information see:

<http://www.bodleian.ox.ac.uk/dbooks>



This work is licensed under a Creative Commons Attribution-NonCommercial-ShareAlike 2.0 UK: England & Wales (CC BY-NC-SA 2.0) licence.



TAYLOR
INSTITUTION
LIBRARY



ST. GILES · OXFORD
Arch. Fol. F. 1755



Bachelor

21 pt. (sum 24)

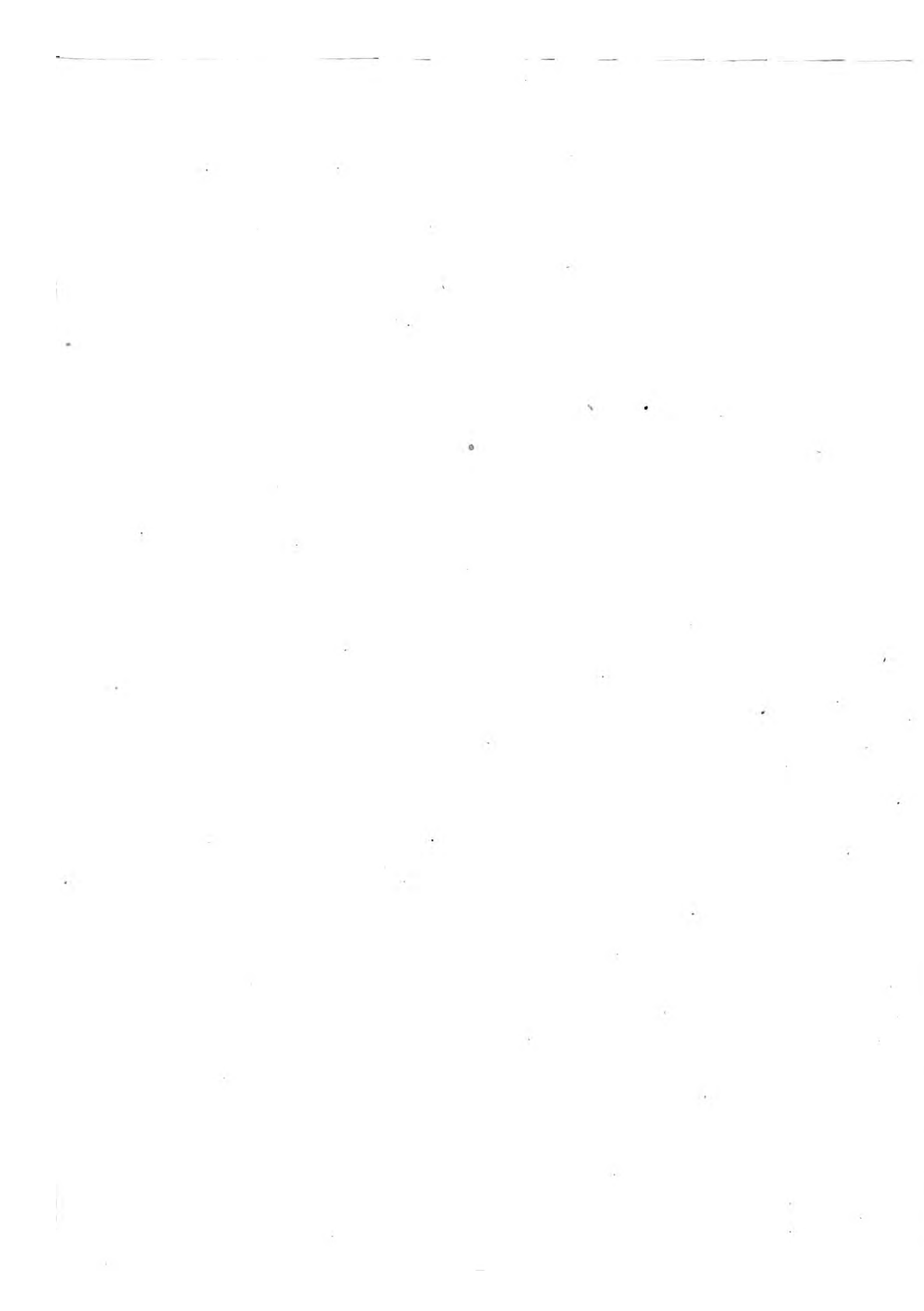
+ 2 pt

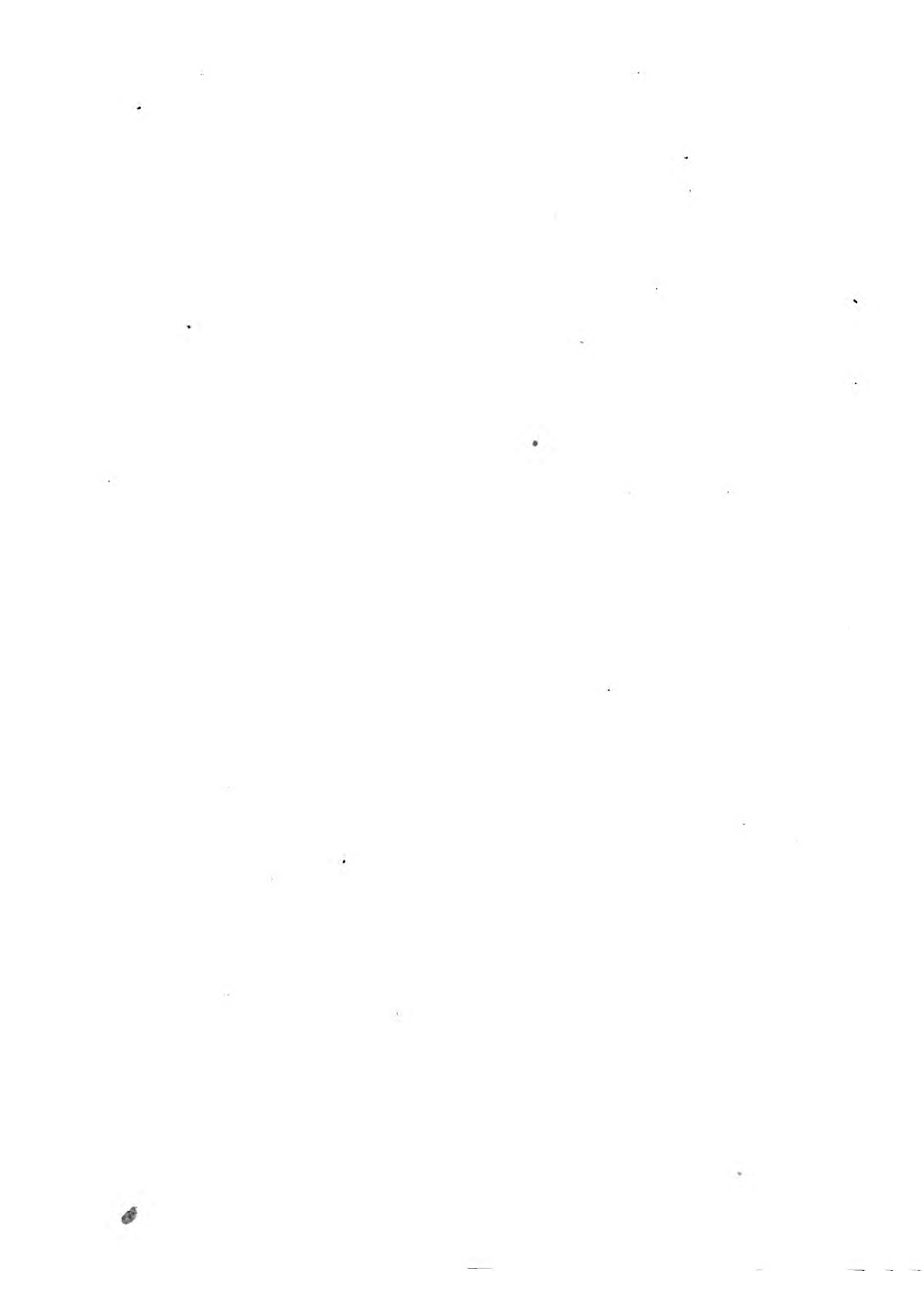
4439

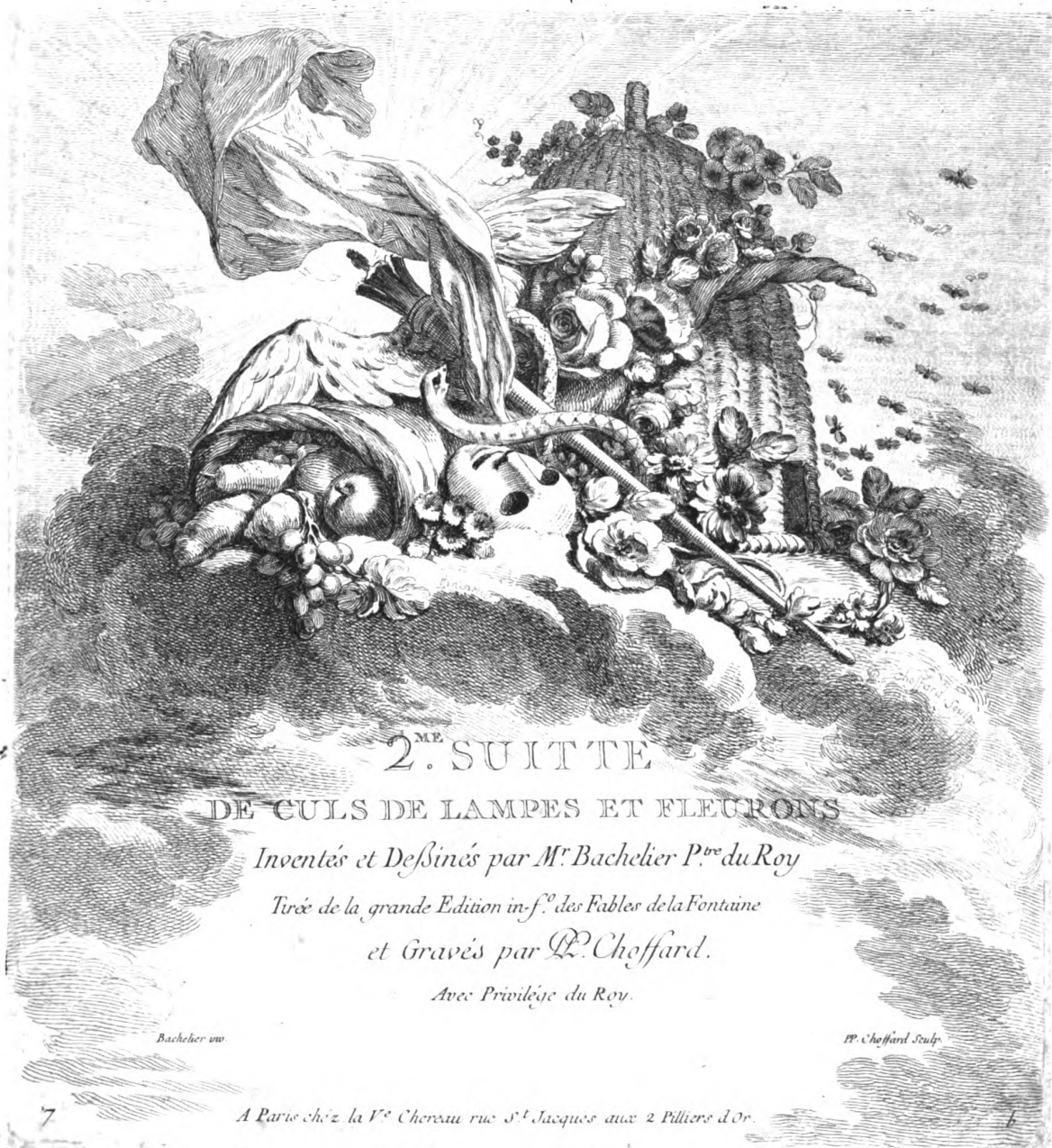
RIS
500 | 90

[BACHELIER]









2.^{ME} SUITE

DE CULS DE LAMPES ET FLEURONS

Inventés et Dessinés par M^r. Bachelier P.^{re} du Roy

Tirée de la grande Edition in-f.^o des Fables de la Fontaine

et Gravés par L.^e Choffard.

Avec Privilège du Roy.

Bachelier inv.

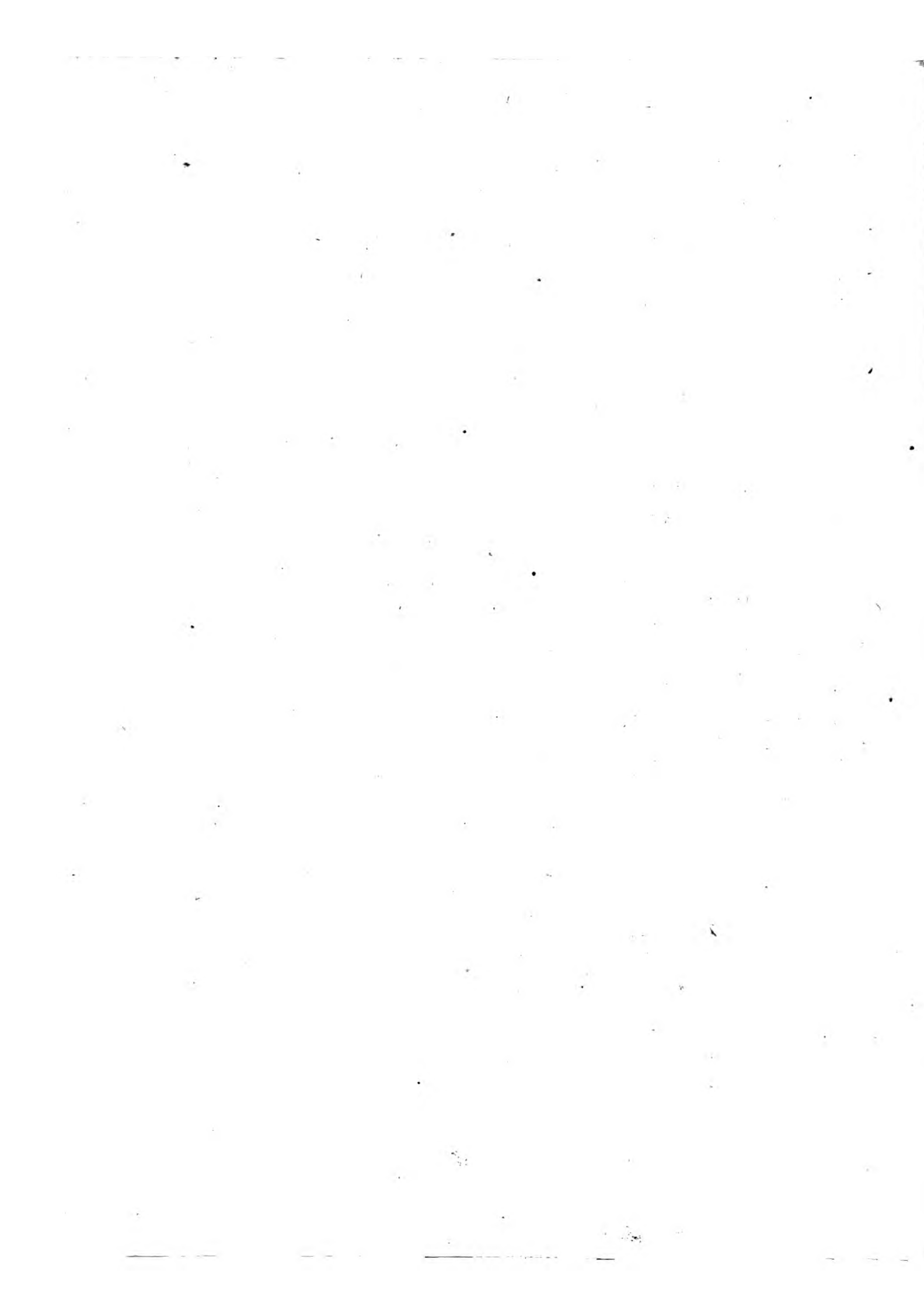
P. Choffard Sculp.











12. 10. 18. 50

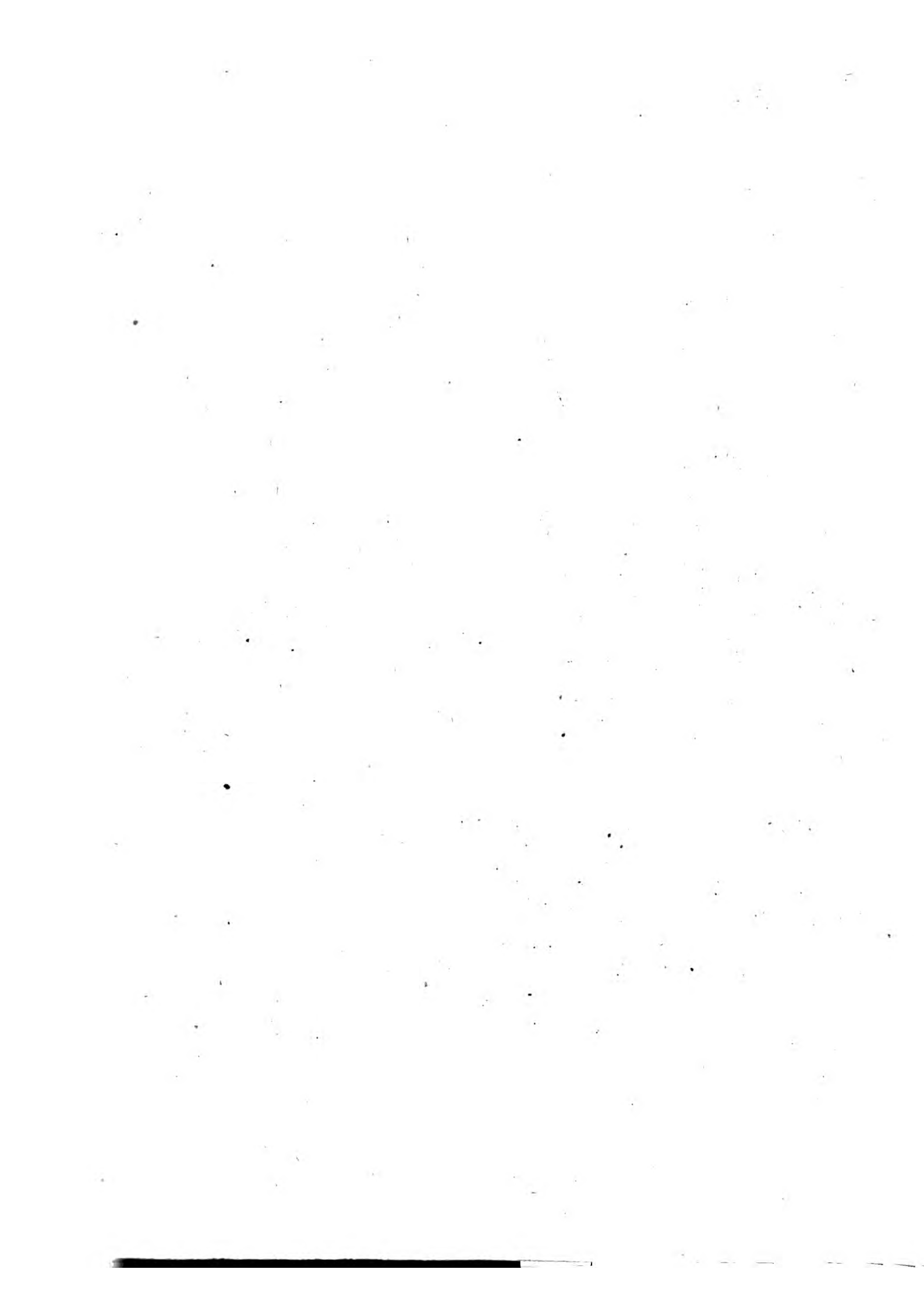






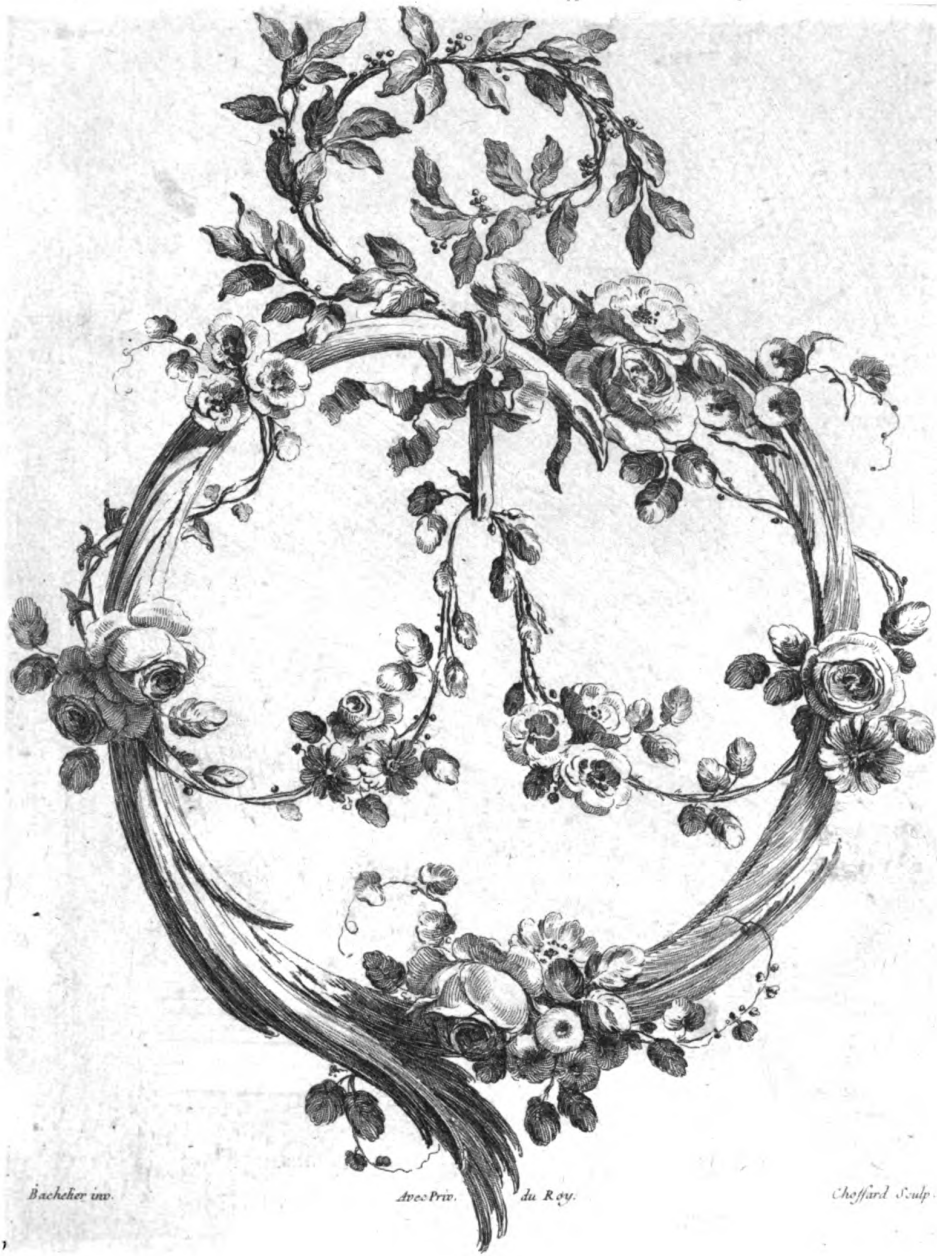








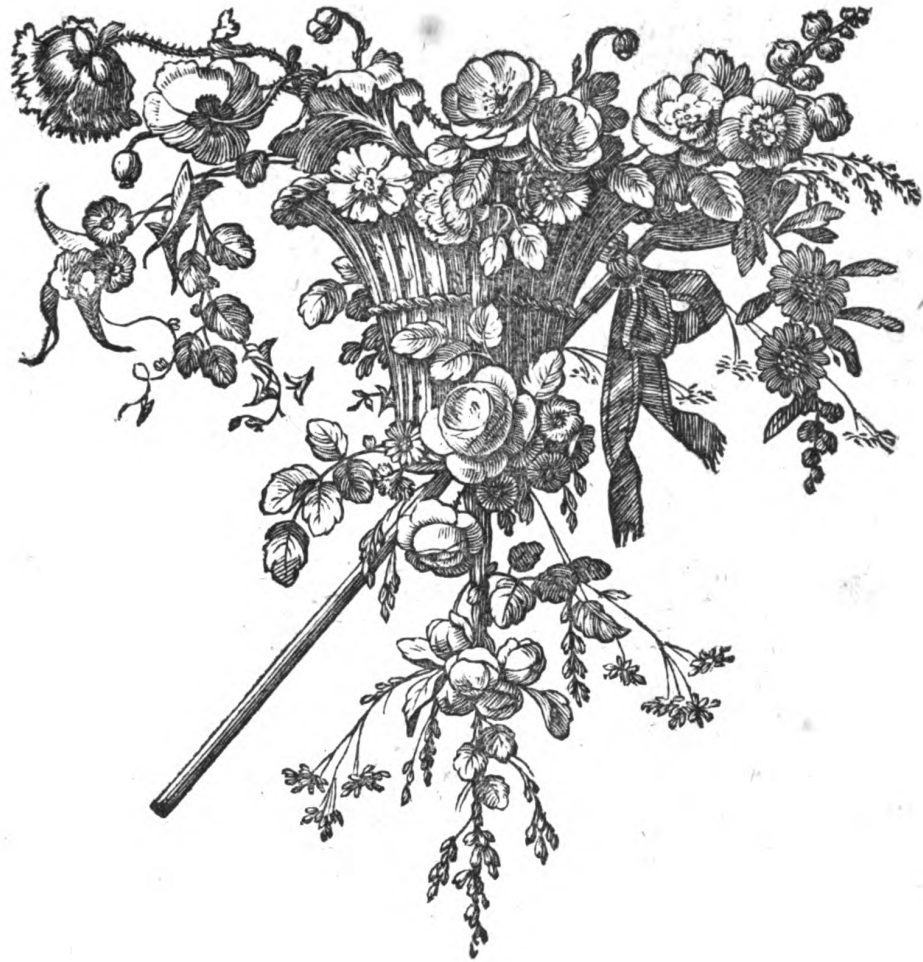


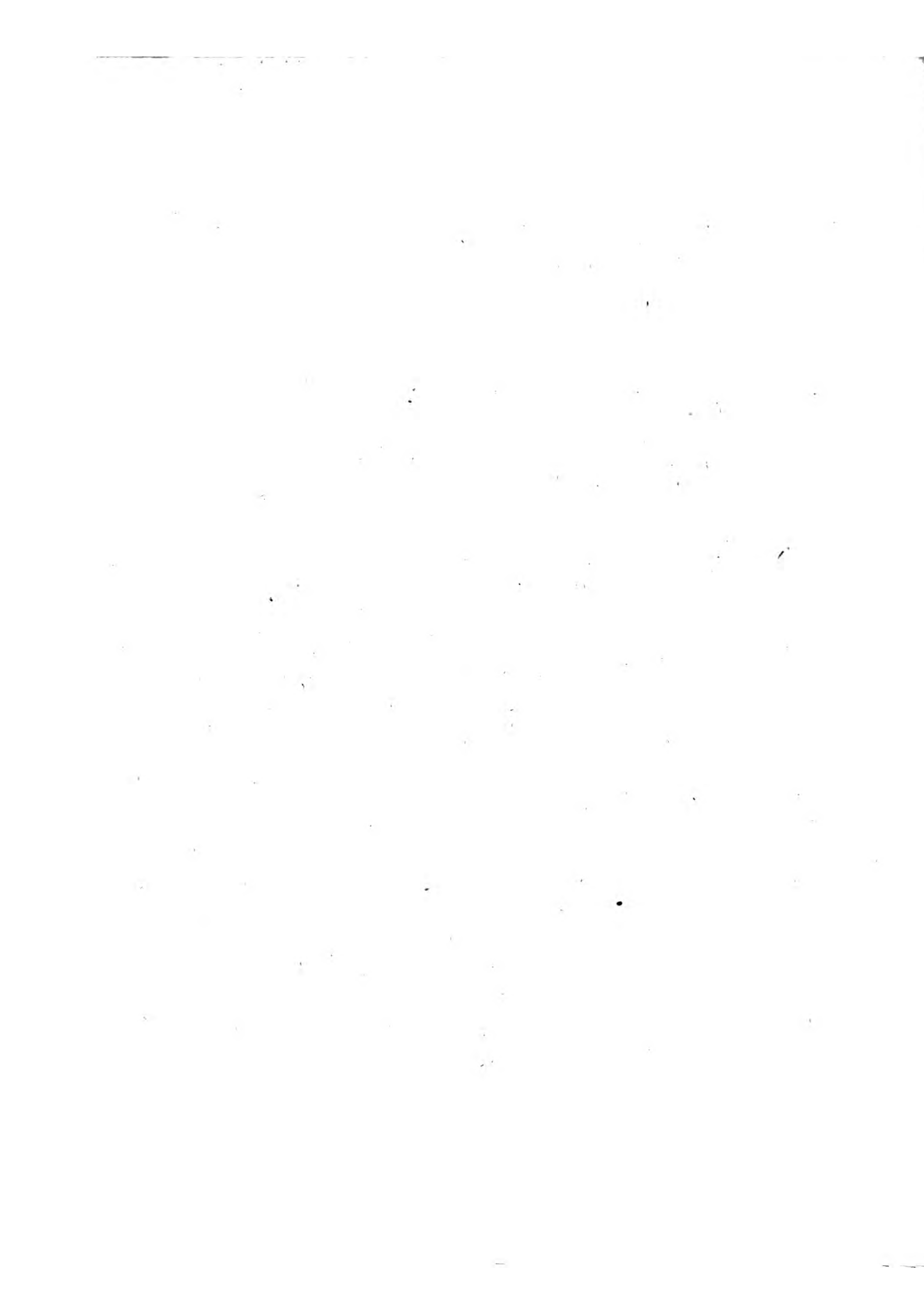


Bacheher inv.

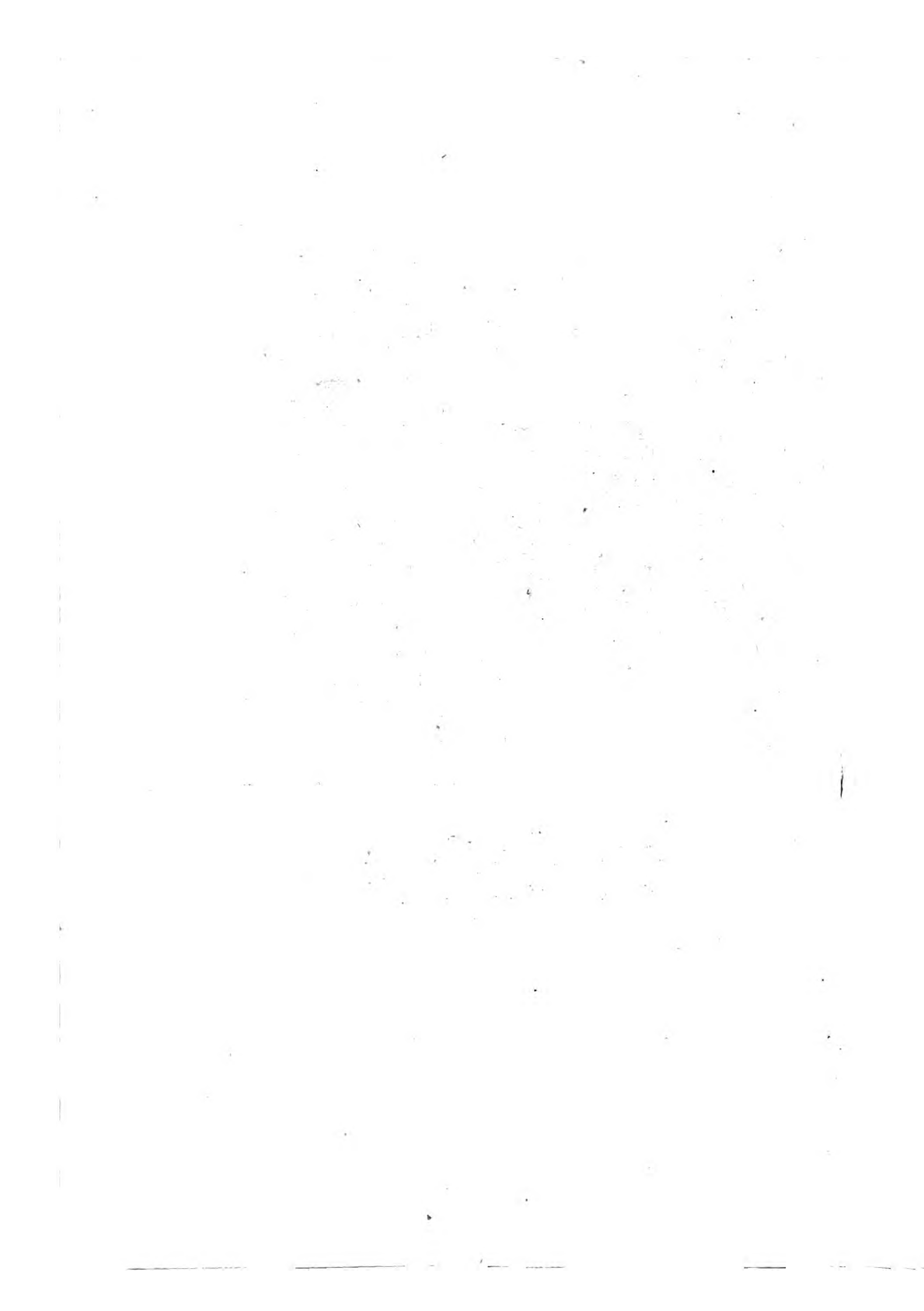
Avec Priv. du Roy.

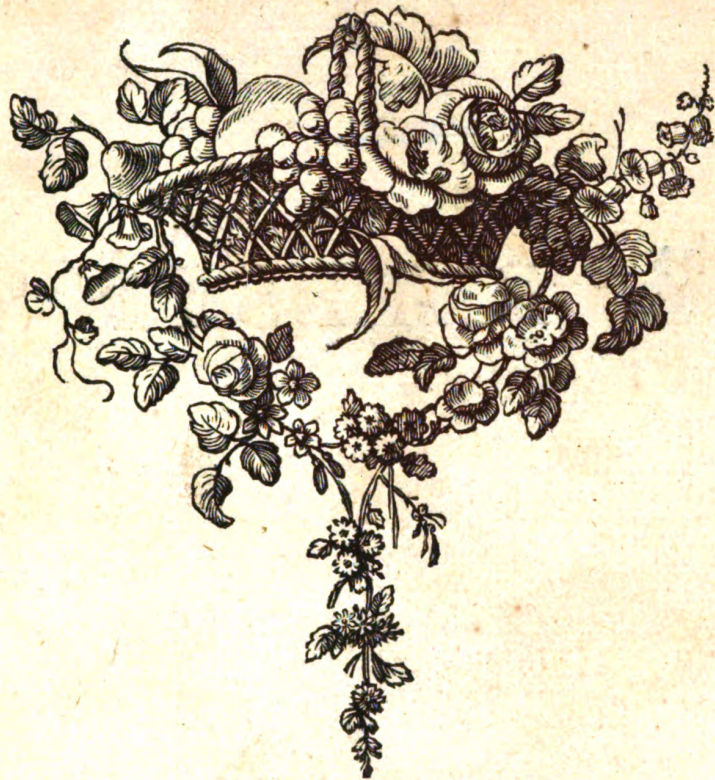
Cheffard Sulp.









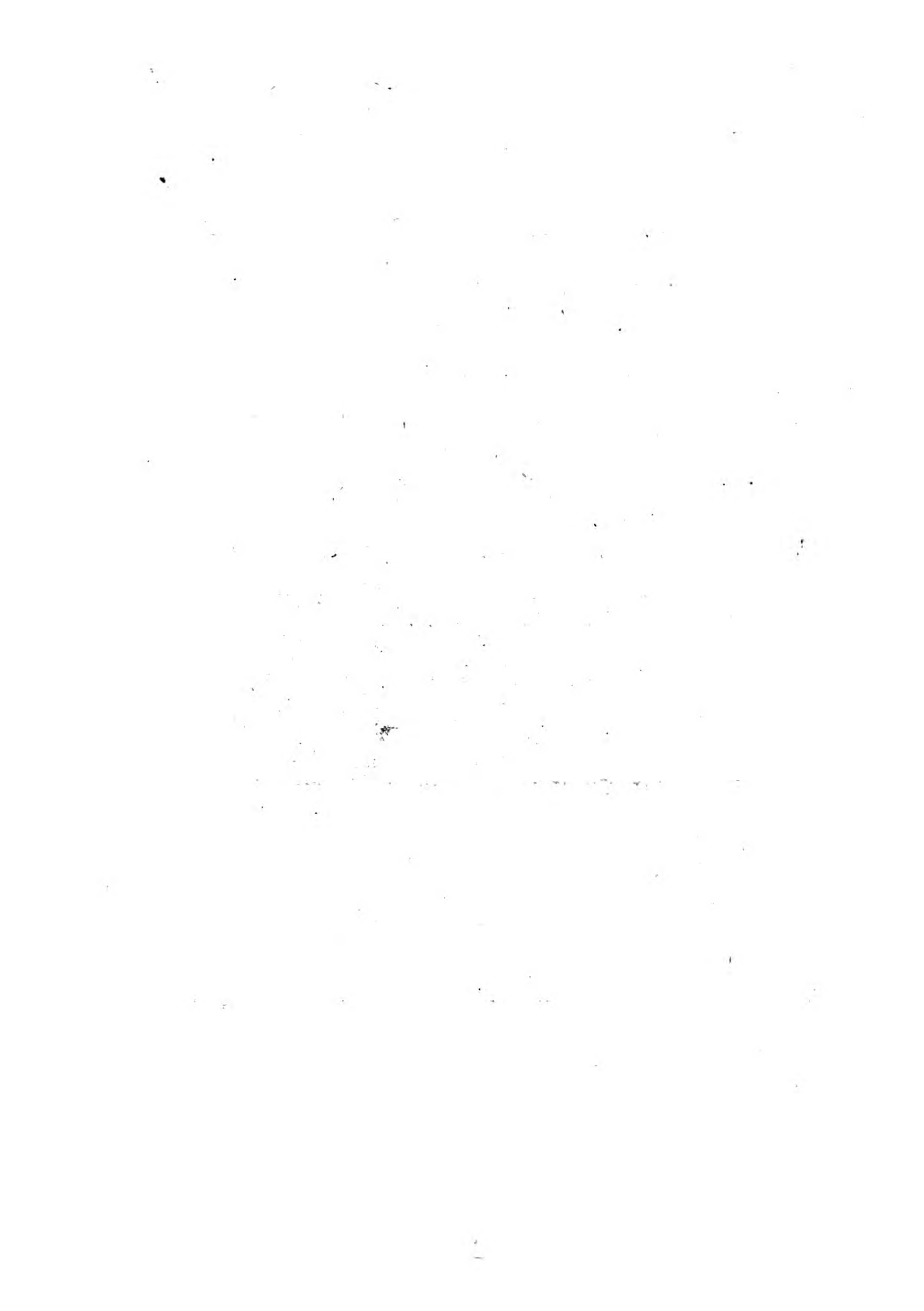








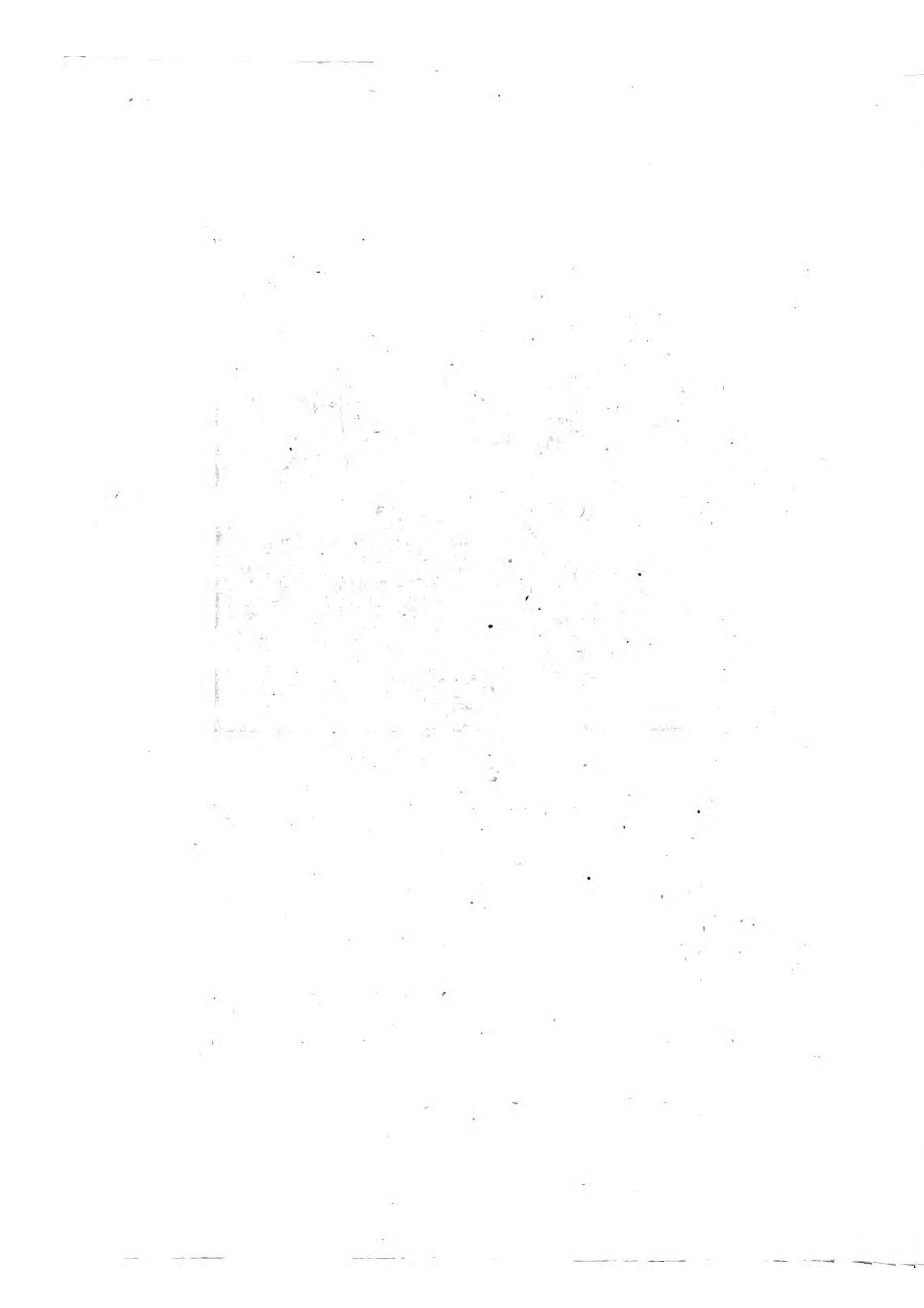














1911

1. The first part of the report deals with the general situation of the country and the progress of the work during the year. It is divided into two main sections, the first of which deals with the general situation and the second with the progress of the work.

2. The general situation of the country is described in the first section. It is found that the country is generally prosperous and that the progress of the work is satisfactory. The second section deals with the progress of the work during the year. It is found that the work has been carried out in accordance with the plan and that the results are satisfactory.

3. The second part of the report deals with the details of the work. It is divided into three main sections, the first of which deals with the general situation of the work, the second with the progress of the work, and the third with the results of the work.

4. The general situation of the work is described in the first section. It is found that the work is generally well advanced and that the progress is satisfactory. The second section deals with the progress of the work during the year. It is found that the work has been carried out in accordance with the plan and that the results are satisfactory.

5. The results of the work are described in the third section. It is found that the work has been carried out in accordance with the plan and that the results are satisfactory. The work has been carried out in accordance with the plan and the results are satisfactory.

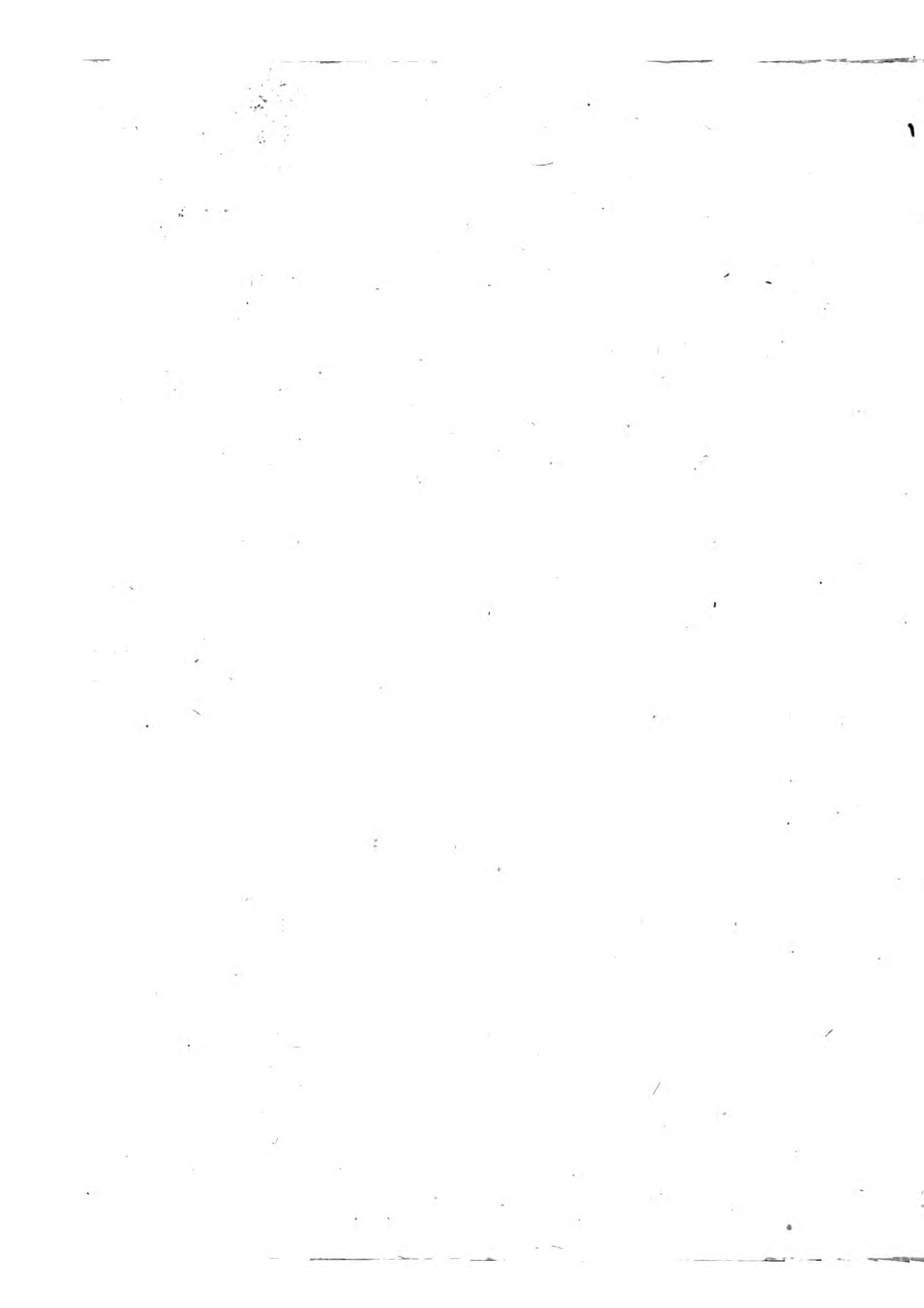












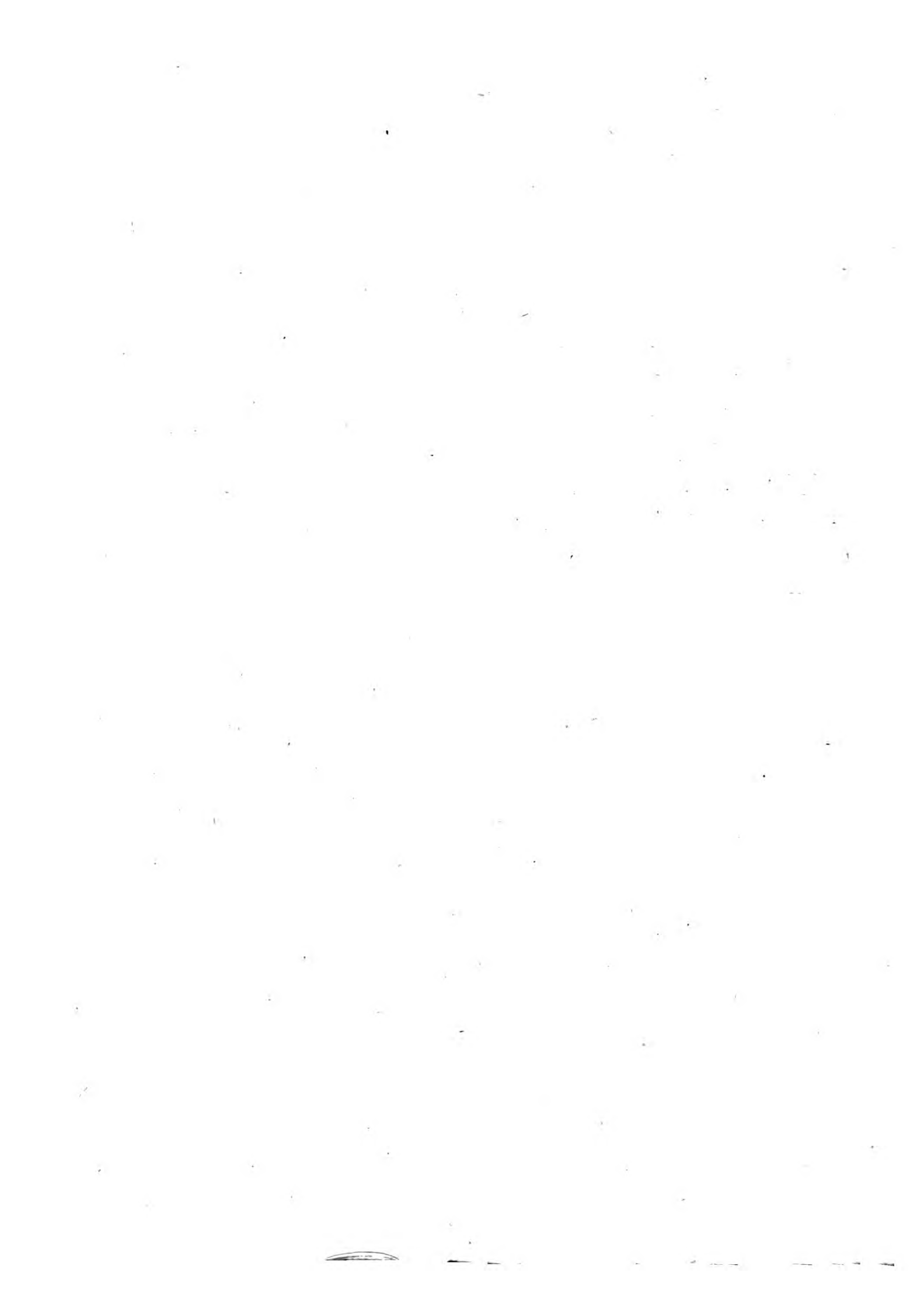






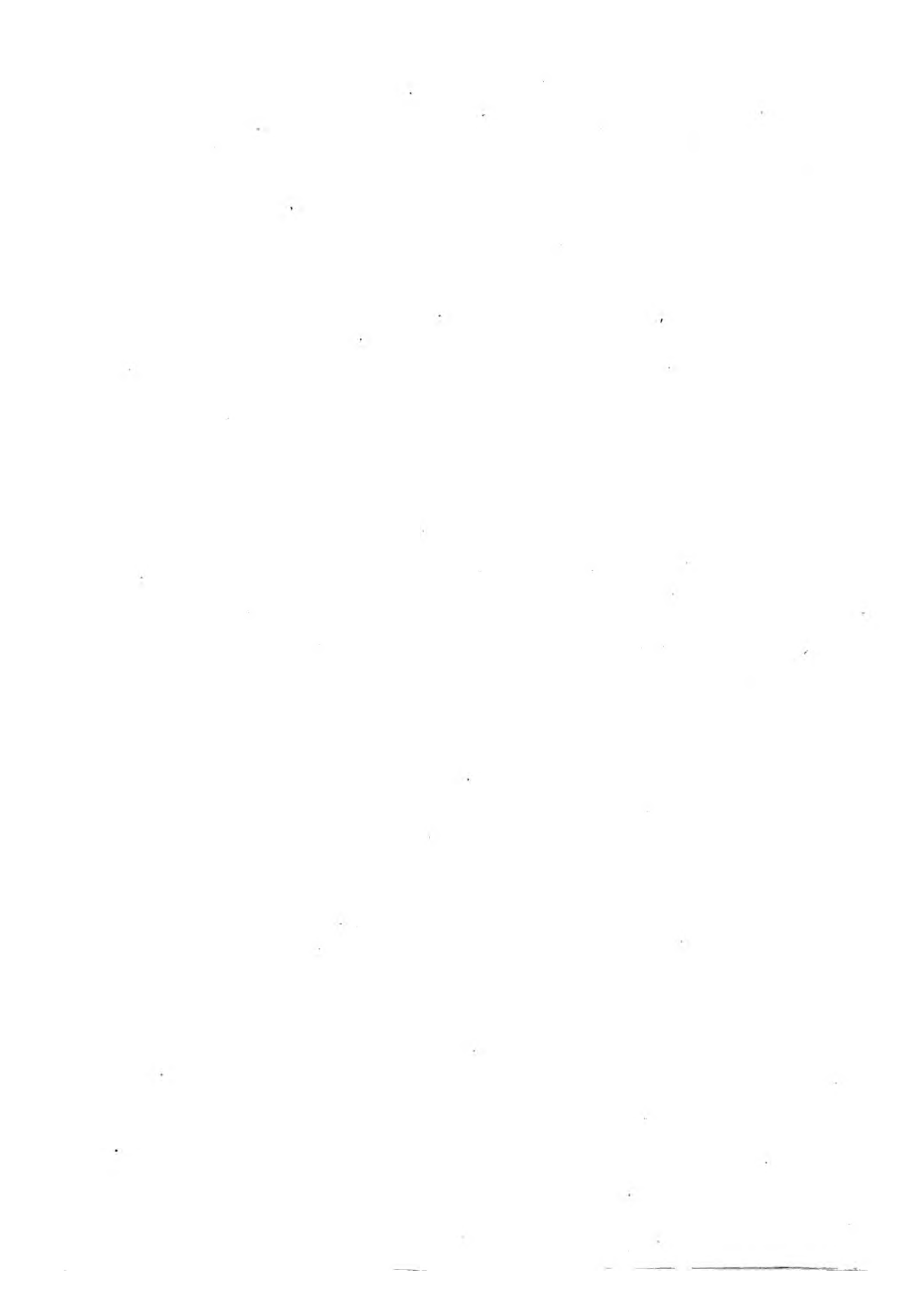












9095 **BACHELIER** (Jean-Jacques). Fleurons et culs-de-lampe pour l'illustration des Fables de La Fontaine, d'Oulry. In-4, pl. bas, marbr., dos à nerfs (Rel. anc.), (402)
Réunion de 35 pièces gravées sur bois, d'après les dessins de Bachelier, par J. B. M. Poyillon et Nic. Le Sueur, montées sur 21 planches. Très belles gravures.
Profilé avec : 2 pièces (titre de la 2^e partie et pl. 9) de la suite gravée sur cuivre par Choffard (P.). Voir Choffard, 1700-1762). —
Eus. 23 planches.

