



Bodleian Libraries

UNIVERSITY OF OXFORD

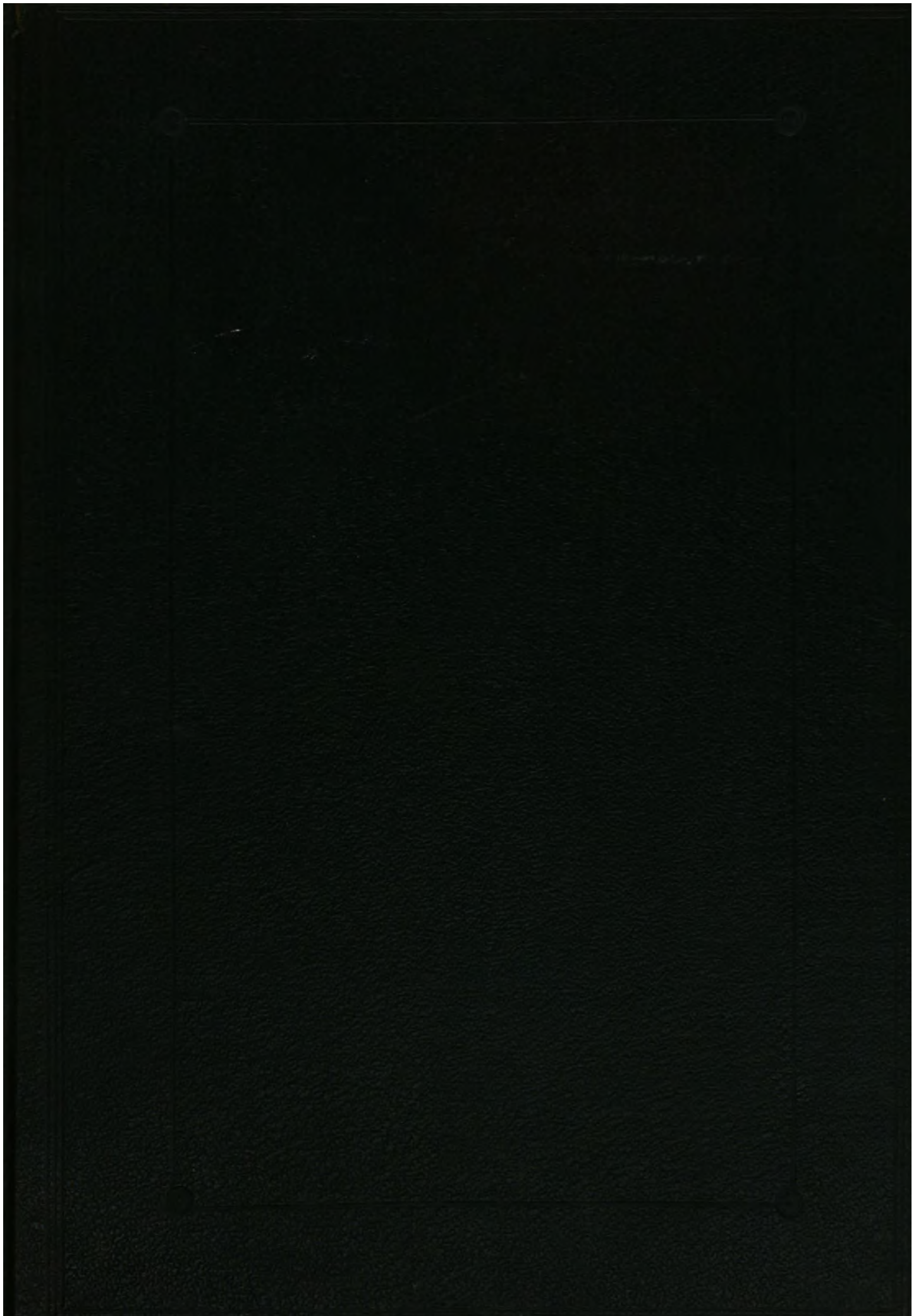
This book is part of the collection held by the Bodleian Libraries and scanned by Google, Inc. for the Google Books Library Project.

For more information see:

<http://www.bodleian.ox.ac.uk/dbooks>



This work is licensed under a Creative Commons Attribution-NonCommercial-ShareAlike 2.0 UK: England & Wales (CC BY-NC-SA 2.0) licence.



680.1 Got

29



THE
ASHMOLEAN
LIBRARY
OXFORD

*

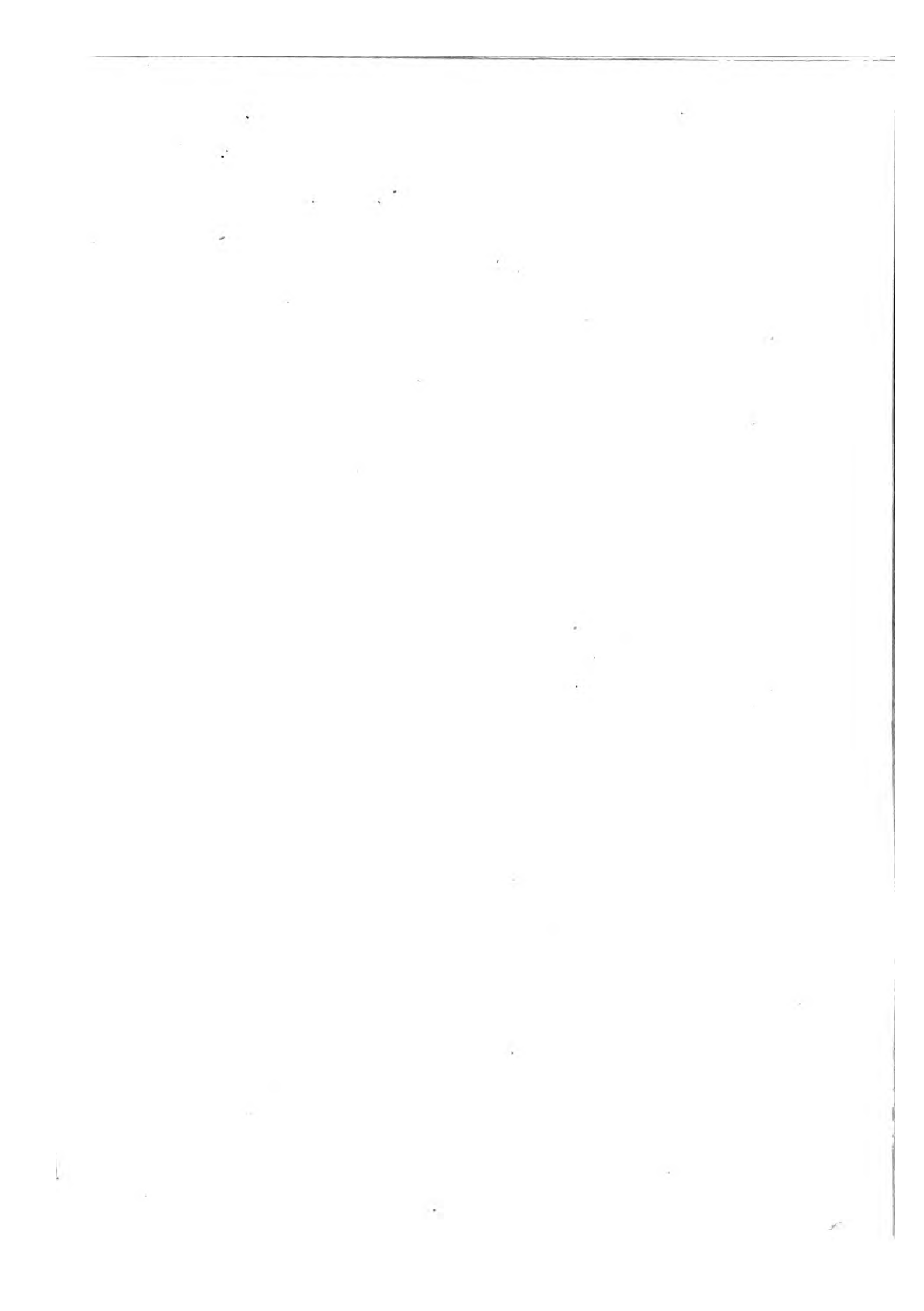
Presented by
Sir Edward
Robinson

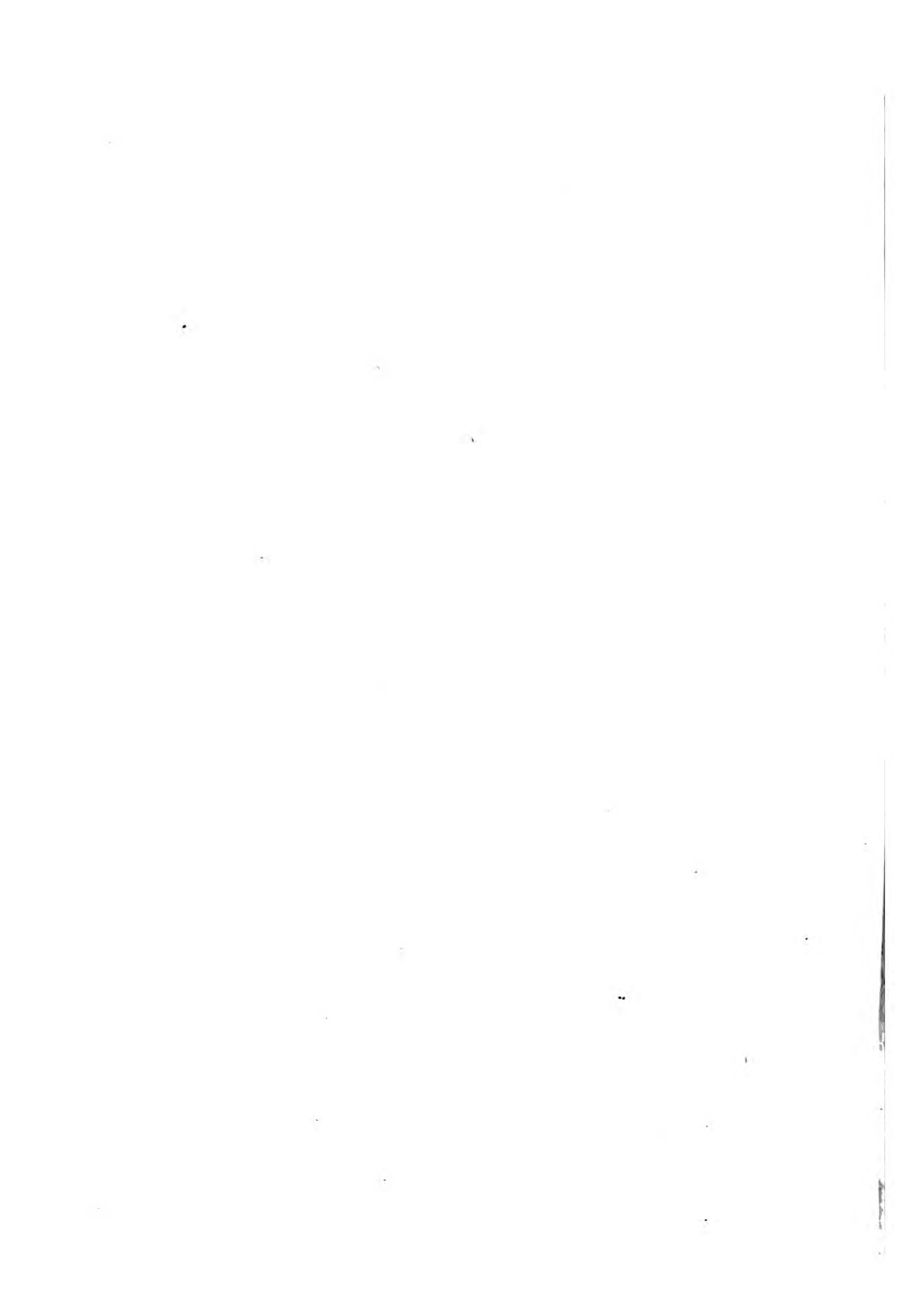




302079844.







DESCRIPTION
OF
ANCIENT COINS,

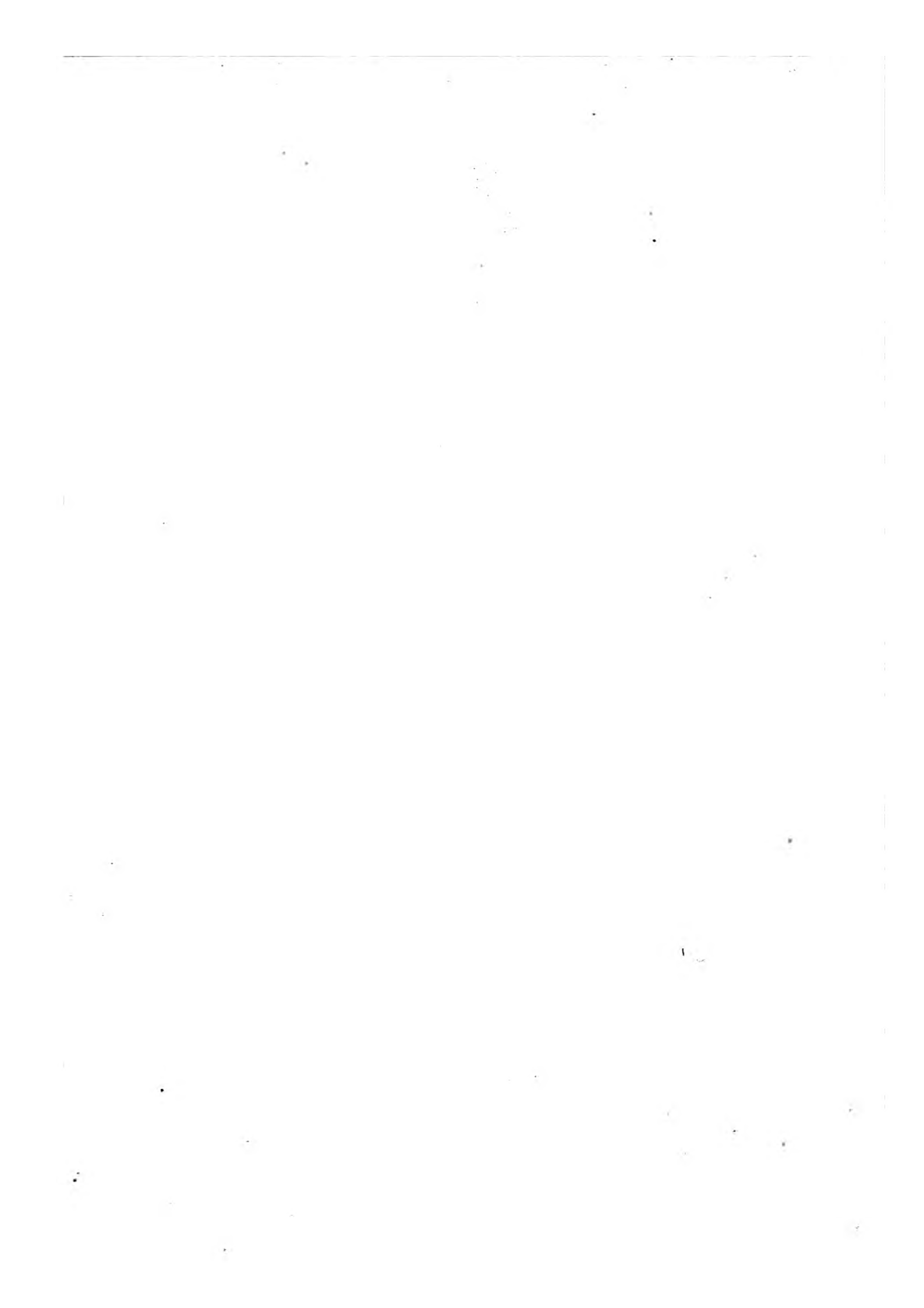
FROM THE CABINET

OF

THOMAS GORDON,

FELLOW OF THE ANTIQUARIAN SOCIETY OF SCOTLAND.





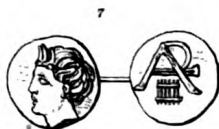
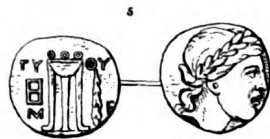
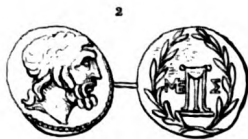
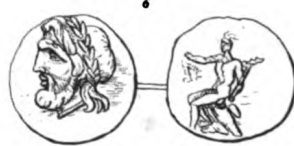
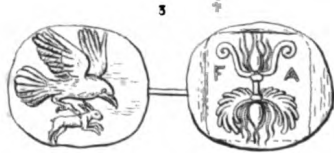


PLATE I.

No. of Plate.	General No.	Size.	Metal.	DESCRIPTION.
I.	6	VI.	Æ	THOURIA in MESSEنيا. Head of Jove. (R.) Pallas standing with Spear and Shield, ΘΟΥ; below ΝΙΚΩΝΤΜΟΣ.
II.	3	III.	AR	MESSEنيا. Head of Jupiter Ithomates. (R.) Tripod within a chaplet, ΜΕΣ.
III.	2	IV.	AR	ELIS. Eagle carrying a Hare. (R.) Winged Thunderbolt, ΦΑ.
IV.	7	VI.	Æ	LACONIA. Head of an Emperor, ΑΤΤΟ ΚΑΙCΑΡ ΤΡ. (R.) Dios-curi on horseback, ΛΑΚΕΔΑΙ ΜΩΝΙΩΝ
V.	9	III.	Æ	GYTHIUM in LACONIA. ¹ Head of Apollo. (R.) Tripod. Caduceus. Club, ΓΥ ΘΥ. Monogram, Μ Ε.
VI.	10	IV.	AR	ARCADIA. Head of Jove. (R.) Pan sitting on a rock with a crook.
VII.	12	1½.	AR	ARCADIA. Head of a young Pan. (R.) Monogram below a Syrinx.
VIII.	14	III.	AR	ARCADIA. Female head: at the corners, ^{P A} _{K A} (R.) Jupiter Ætrophore sitting.

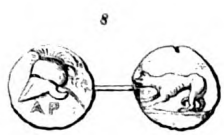
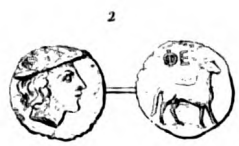
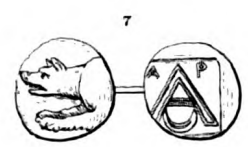
¹ Very rare.

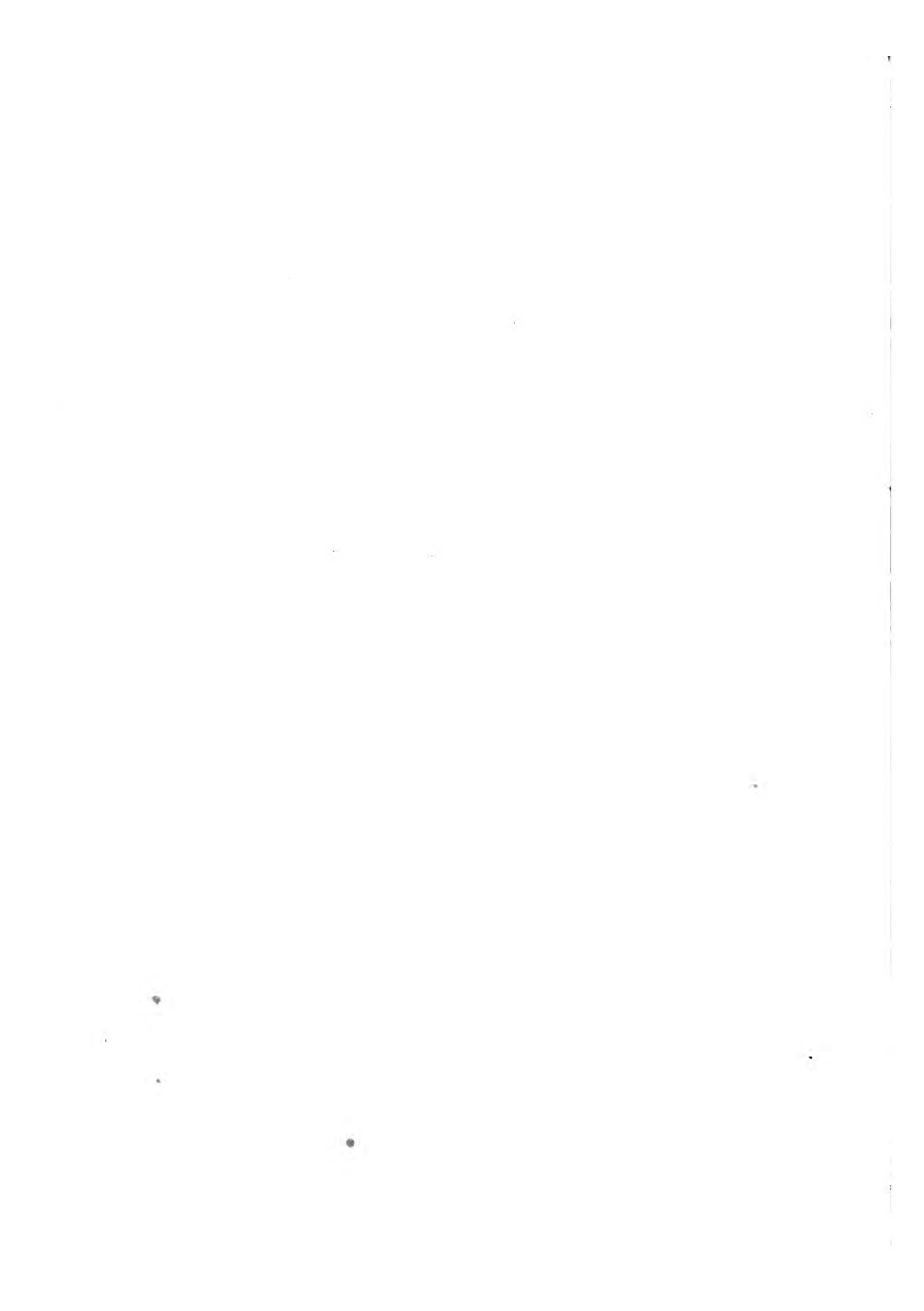
PLATE II.

No. of Plate.	General No.	Size.	Metal.	DESCRIPTION.
I.	17	IV.	Æ	ARCADIA Head of Jove. (R.) Eagle with extended wings. Mon ^m . above TOY.
II.	22	III.	Æ	PHENEOS in ARCADIA. Head of Mercury with a Petasus. (R.) Ram walking; above ΦE.
III.	23	IV.	AR	ACHÆAN LEAGUE. Head of Jove. (R.) Mon ^m . within a laurel wreath. Thunderbolt.
IV.	27	III.	AR	ACHÆAN LEAGUE. Laurelled head of Jove. (R) Chaplet, Mon ^m . AN ET
V.	28	III.	AR	PATRÆ in ACHAIA. Head of Venus. (R.) Laurel wreath, Mon ^m . ΔA MACIAC
VI.	30	V.	Æ	PATRÆ, a Roman colony. Head of Antoninus Pius, IMPANTON. (R.) A man seated; a Ram standing before him, COLON PAT.
VII.	36	II.	AR	ARGOS. Wolf's head. (R.) Mon ^m . below a crescent; above AP.
VIII.	38	II.	AR	ARGOS. ² Wolf to the right. (R) Helmet; below AP.

¹ Found in the ruins of Megalopolis, April 1829.

² Not before published.







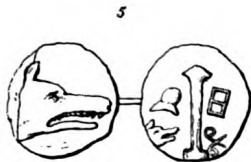
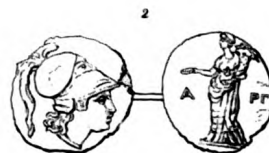
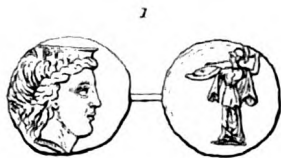
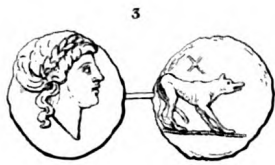
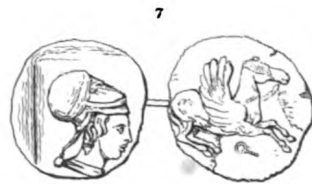
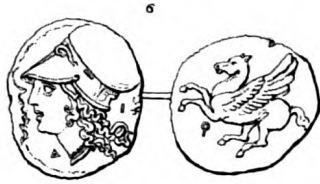
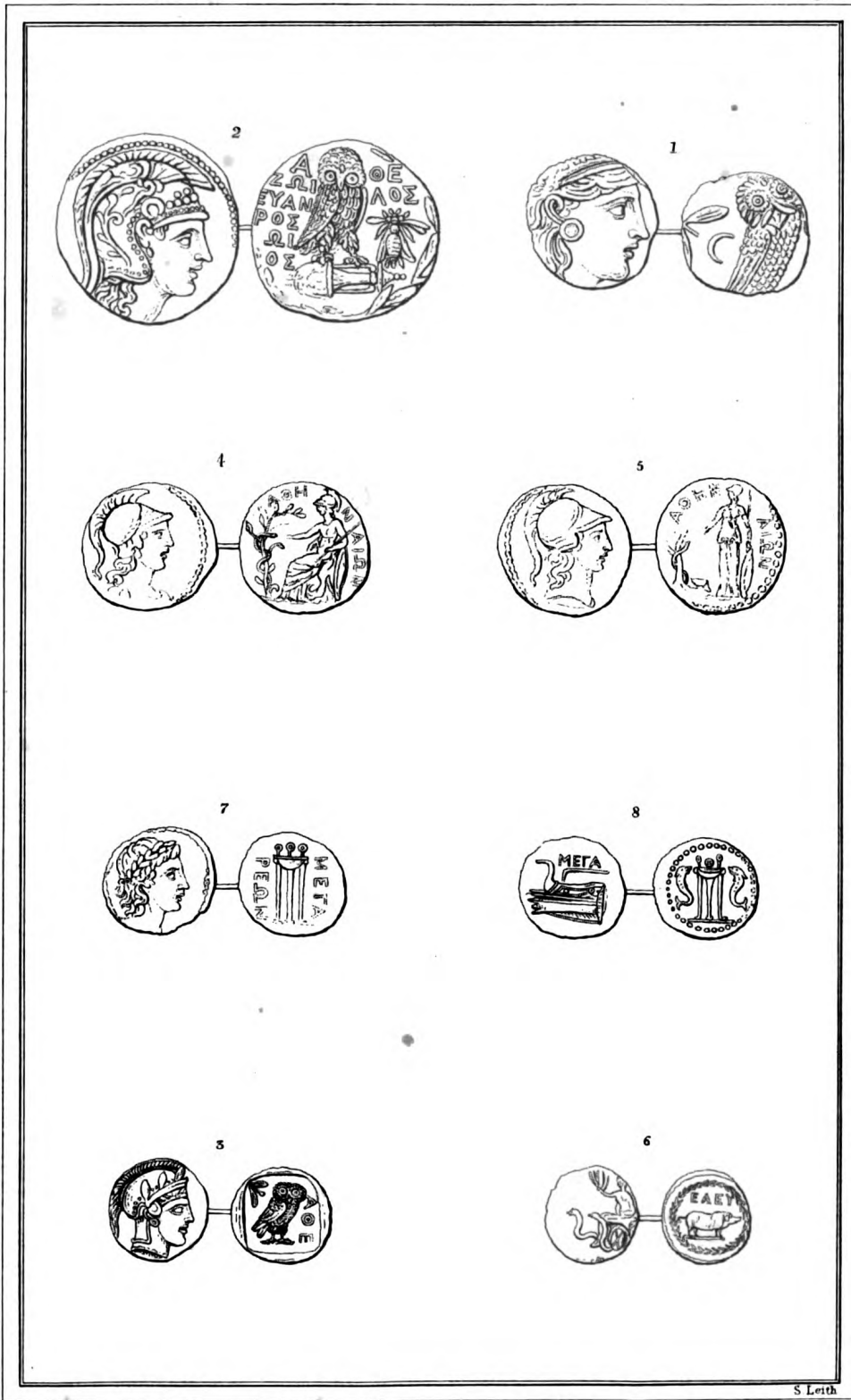


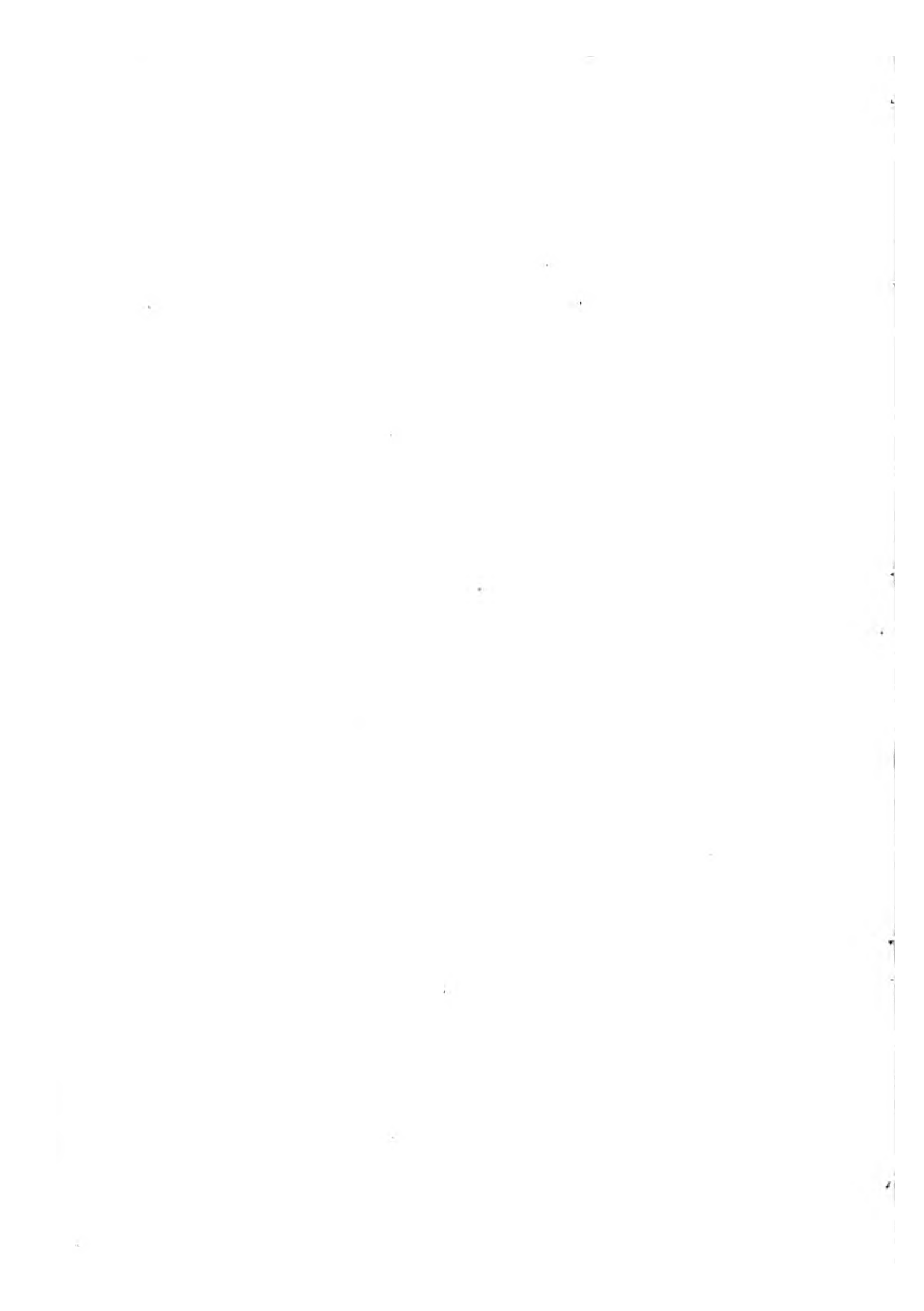
PLATE III.

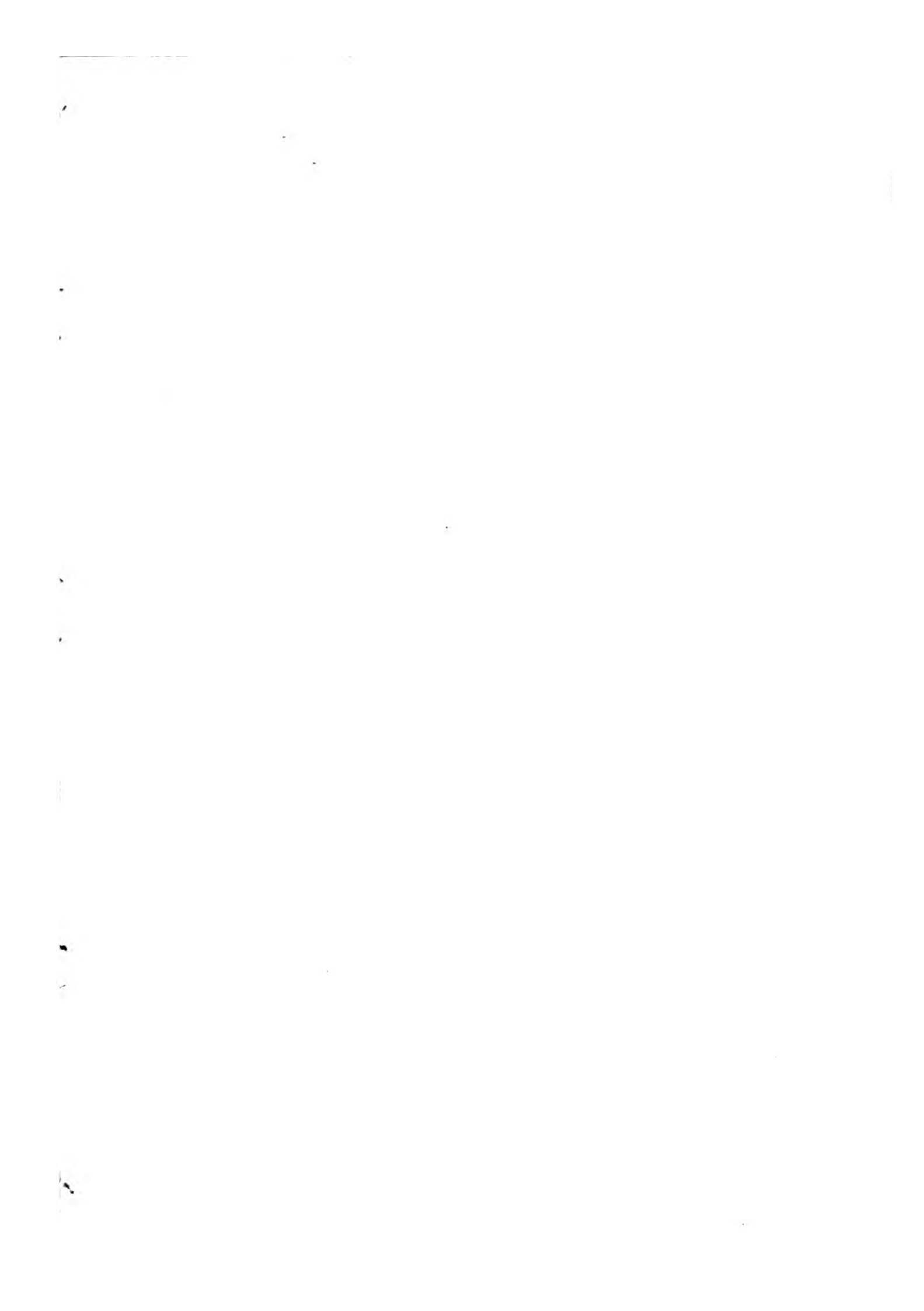
No. of Plate.	General No.	Size.	Metal.	DESCRIPTION.
I.	44	III.	Æ	ARGOS. Crowned female head: on the crown APΓ. (R.) Pallas marching with shield and spear.
II.	45	III.	Æ	ARGOS. Head of Pallas. (R.) Female with patera and cornucopia, Δ PF.
III.	48	III.	Æ	ARGOS. Head of Apollo. (R.) Wolf to the left. Mon ^m .
IV.	37	II.	AR	ARGOS. Crowned female head. (R.) Pallas marching with lance and buckler, AP.
V.	58	IV.	Æ	THYREA in ARGOLIS. Wolf's head. (R.) Quiver, helmet: Wolf's head: Forceps: Mon ^m .
VI.	62	V.	AR	CORINTH. Head of Pallas: before Δ: behind I. (R.) Pegasus to the right; below ρ
VII.	63	V.	AR	CORINTH. Head of Pallas to the left. (R.) Pegasus to the left ρ
VIII.	83	IV.	AR	CORINTH, a Roman colony. Head of Antoninus, M AUR ANTON. (R.) Palm-tree on an altar, with a door in the middle,] P

PLATE IV.

No. of Plate.	General No.	Size.	Metal.	DESCRIPTION.
I.	89	V.	AR	ATHENS. (a Tetradrachm.) Head of Pallas. (R.) Owl : Crescent : Olive leaf.
II.	92	VII.	AR	ATHENS. Head of Pallas, with helmet and crest. (R.) Owl standing on a Diota—Bee—Names of Magistrates. AΘE ZΩIAOΣ ETAN POΣ ΩI OΣ
III.	93	III.	AR	ATHENS. (a Drachm.) Head of Pallas. (R.) Owl—Olive leaf. AΘE in a hollow square.
IV.	110	IV½.	Æ	ATHENS. Head of Pallas, with helmet and crest. (R.) Pallas armed and seated ; before her an olive trunk, round which a serpent is twined. AΘHNAION.
V.	111	IV½.	Æ	ATHENS. Head of Pallas, with helmet and crest. (R.) Pallas armed and standing : Olive trunk : Serpent. AΘHNAION.
VI.	121	III.	Æ	ELEVSIS. Sow to the left, standing on a club, within a chaplet, EAEY. (R.) Ceres in a chariot, drawn by Serpents, to the right.
VII.	128	III.		MEGARA. Head of Apollo. (R) Tripod, ΜΕΓΑΡΕΩΝ.
VIII.	131	III.	Æ	MEGARA. Prow of a Galley, ΜΕΓΑ. (R.) Tripod between two Dolphins.







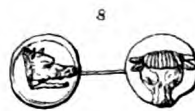
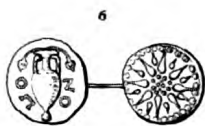
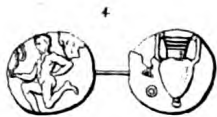
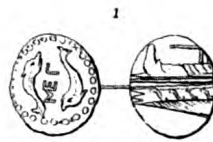
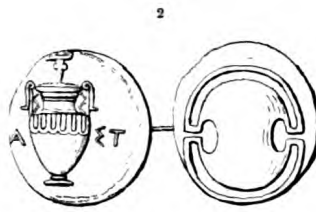
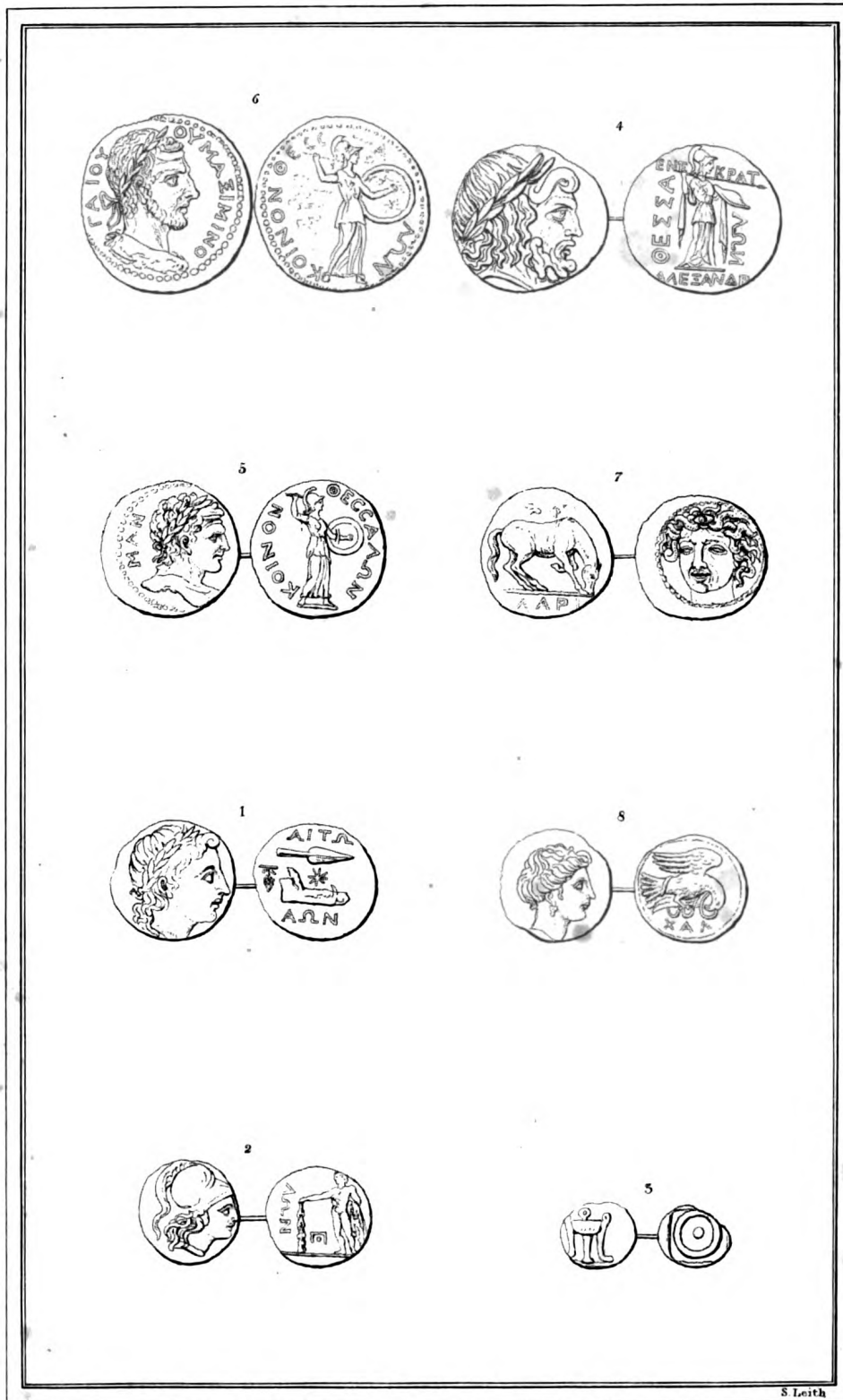


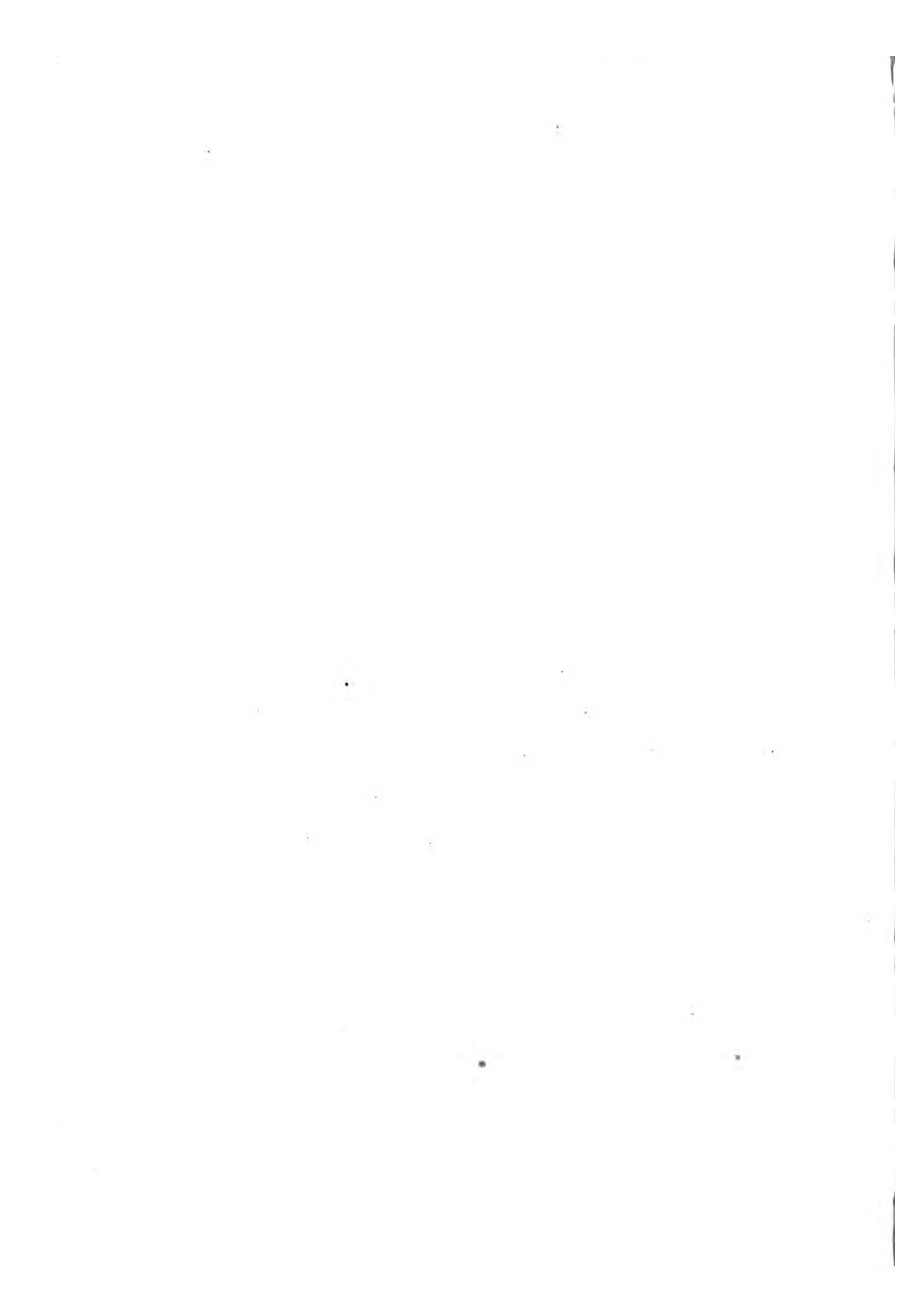
PLATE V.

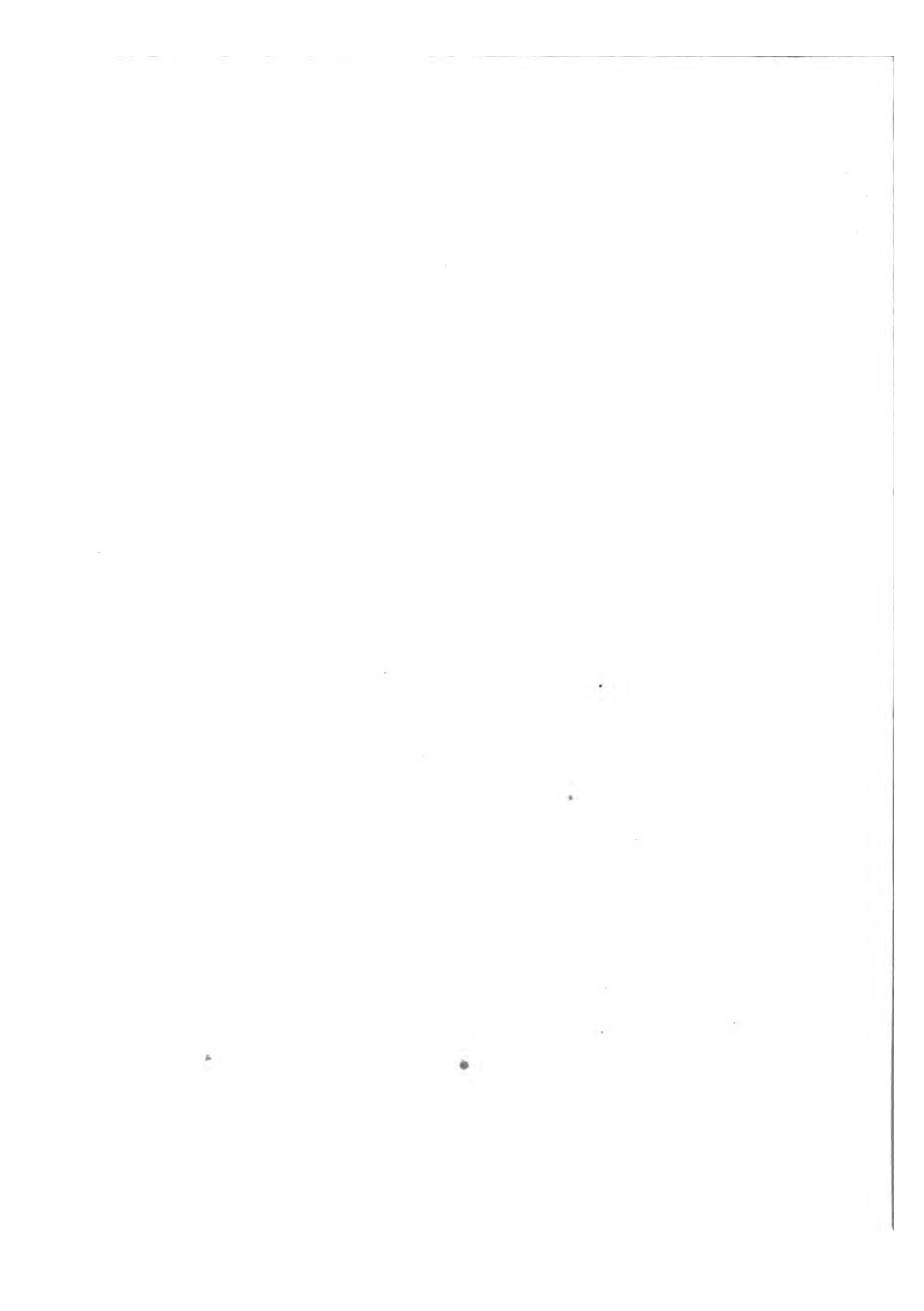
No. of Plate.	General No.	Size.	Metal.	DESCRIPTION.
I.	133	III.	Æ	MEGARA. Prow of a Galley with a tripod on it. (R.) Two Dolphins : between them ΜΕΓ.
II.	137	VI.	AR	BÆOTIA. Bœotian Shield. (R.) Diota. ΑΣΤ.
III.	143	II.	Æ	BÆOTIA. Bœotian Shield. (R.) Trident : Dolphin. ΒΟΙΩΤΩΝ.
IV.	142	II.	AR	BÆOTIA. Hercules kneeling and holding a Diota. (R.) Diota, Θ Α.
V.	156	VI.	AR	OPUNTIAN LOCRI. Female head of singular beauty. (R.) Naked Targeteer, with sword and buckler below T. ΟΠΟΝΤΙΩΝ.
VI.	159	1½.	AR	OPUNTIAN LOCRI. Diota, ΟΠΟΝ. (R.) Star.
VII.	160	2½.	Æ	EPIKNEMIDIAN LOCRI. Head of Pallas. (R.) Bunch of grapes. ΛΟΚΡΩΝ.
VIII.	151	I.	AR	PHOCIS. Bull's head. (R.) Boar's head. Ο.

PLATE VI.

No. of Plate.	General No.	Size.	Metal.	DESCRIPTION.
I.	161	IV $\frac{1}{2}$.	Æ	AETOLIA. Head of Apollo. (R.) Spear head; jaw-bone of a Boar; Star; Bunch of Grapes. ΑΙΤΩ ΑΩΝ.
II.	166	III.	Æ	AETOLIA. Head of Pallas. (R.) Hercules standing; his club in his right hand. ΑΙΤΩΛΩΝ.
III.	169	II.	AR	THYRREUM in ACARNANIA. Tripod. (R.) ⊙.
IV.	171	VI.	AR	THESSALY. Head of Jove. (R.) Pallas with lance and shield. ΘΕΣΣΑΛΩΝ; above, ΕΝΕΚΡΑΤ; below, ΑΕΞΑΝΔΡ.
V.	175	V.	Æ	THESSALY (IMPERIAL.) Head of Caracalla, ΜΑΝ. (R.) Pallas with dart and shield. ΚΟΙΝΟΝ ΘΕΣΣΑΛΩΝ.
VI.	176	VII.	Æ	Head of Maximinus. ΓΑ ΙΟΥ .. ΟΥ ΜΑΞΙΜΙΝΟ. Same reverse and legend.
VII.	177	IV	AR	LARISSA. Medusa's Head. (R.) Horse grazing. ΑΑΡ.
VIII.	191	IV.	AR	CHALCIS. Female head. (R.) Eagle devouring a serpent. ΧΑΑ.







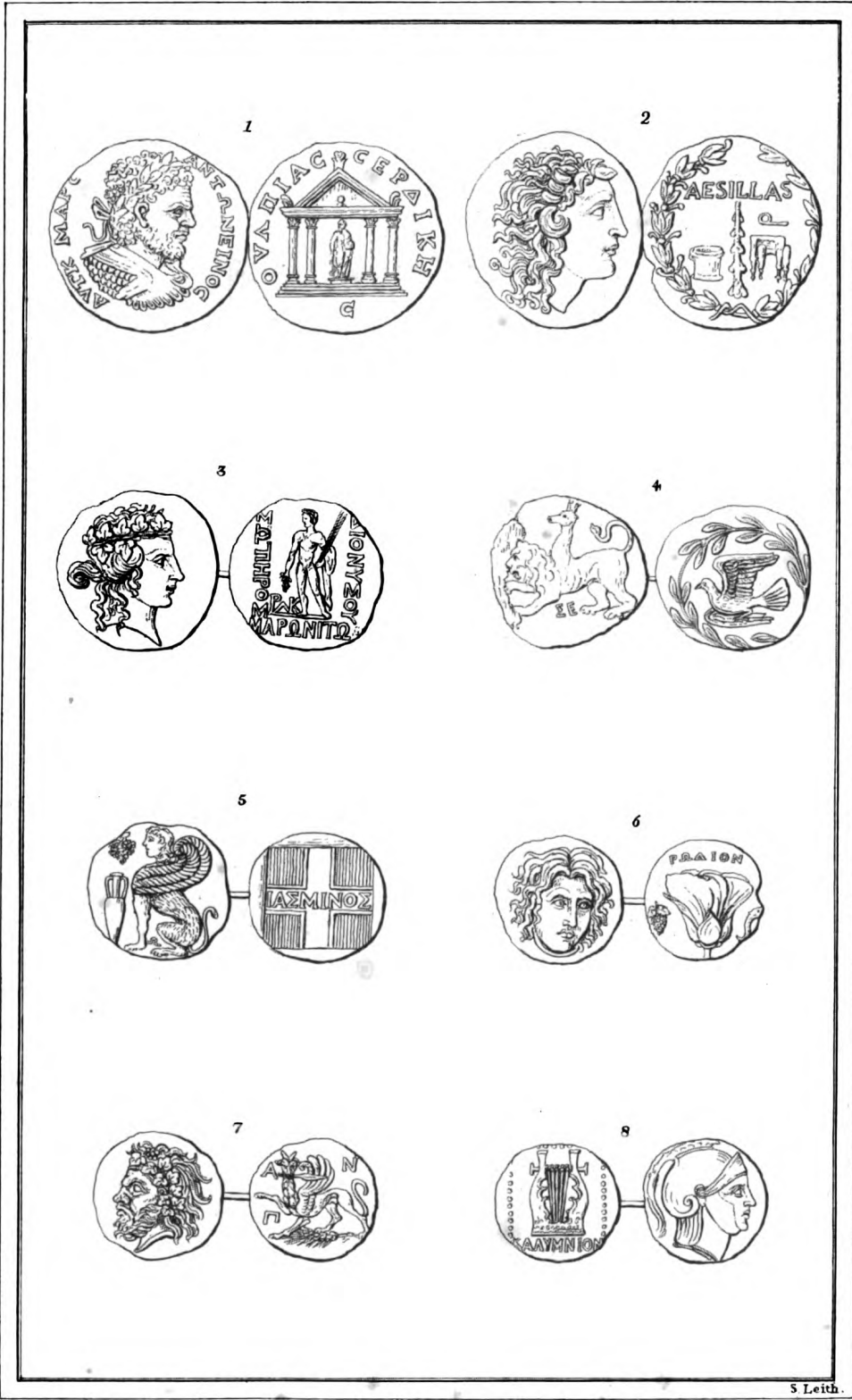


PLATE VII.

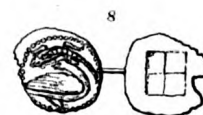
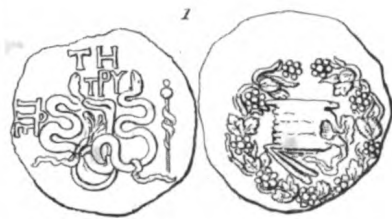
No. of Plate.	General No.	Size.	Metal.	DESCRIPTION.
I.	262	VIII.	Æ	<p>ULPIA SARDICA.*</p> <p>Head of Caracalla. AVT K MAPK ANTΩNEINOS. (R.) Tetrastylon temple and image. ΟΤΑΠΗΑΣ ΣΕΡΔΑΙΚΗ.</p>
II.	250	VIII.	AR	<p>MACEDONIA (a Roman Province.)</p> <p>Head of Apollo. (R.) Club; Sacred Cista. Table, Q. within a crown of laurel. AESILLAS.</p>
III.	254	VI.	Æ	<p>MARONEA.</p> <p>Head of Bacchus crowned with Ivy. (R.) Bacchus standing. Mon. ΔΙΟΝΤΣΟΥ ΣΩΤΗΡΟΣ ΜΑΡΩΝΙΤΩΝ.</p>
IV.	208	VI.	AR	<p>SERPPOS.</p> <p>Chimæra ΣΕ. (R.) Dove within a laurel wreath.</p>
V.	223	V.	AR	<p>CHIOS.</p> <p>Sphynx: Vase: Bunch of Grapes. (R.) Hollow square. ΙΑΣΜΙΝΟΣ.</p>
VI.	227	IV.	AR	<p>RHODES.</p> <p>Sun. (R.) Pomegranate blossom. ΡΟΔΙΩΝ.</p>
VII.	263	IV½.	AV	<p>PANTICAPÆUM (Tauric Chersonese.)</p> <p>Head of Pan crowned with Ivy. (R.) Griffin walking on an ear of corn, with the head of a lance in his mouth. ΠΑΝ.</p>
VIII.	234	IV½.	AR	<p>CALYMNOS.</p> <p>Helmeted head. (R.) Lyre within a hollow square. ΚΑΛΥΜΝΙΟΝ.</p>

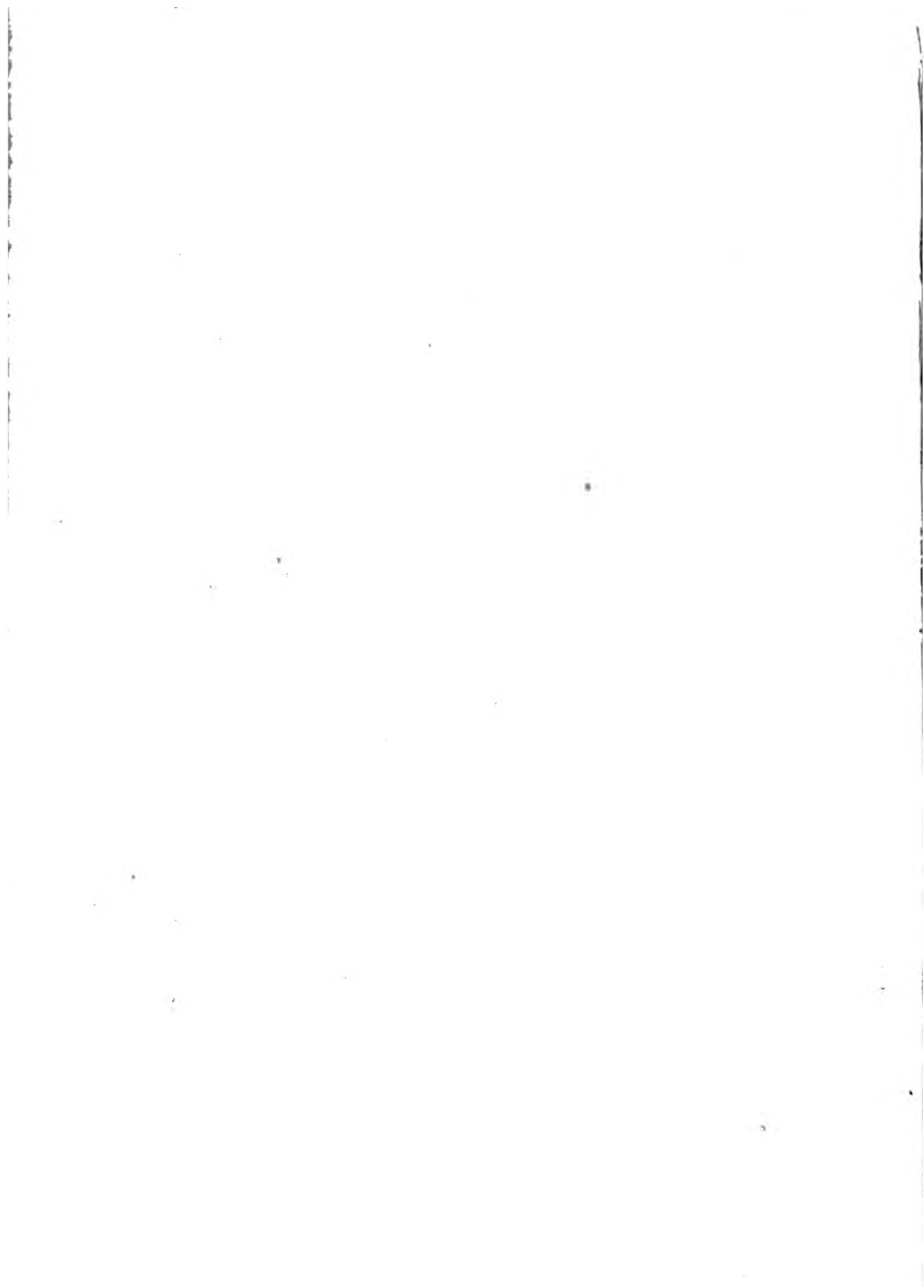
* Now Sophia.

PLATE VIII.

No. of Plate.	General No.	Size.	Metal.	DESCRIPTION.
I.	268	VII.	AR	<p>PERGAMUS in MYSIA.</p> <p>Mystic chest, whence issues a Serpent, in a wreath of Ivy and wild Vine.* (R.) Two Serpents entwined about a Quiver. Mon. of ΠΕΡΓΑΜ: Bacchus's rod, ΠΡΥΤΗ.</p>
II.	260	VI.	Æ	<p>PERINTHUS in THRACE.</p> <p>Head of Sabina; ΣΑΒΕΙΝΑ ΤΡΑΝΚΥΛΕΙΝΑ. (R.) Fortune standing; ΠΕΡΙΝΘΙΩΝ ΒΕΩΚΩΡΩΝ.</p>
III.	246	V.	Æ	<p>THESSALONICA in MACEDONIA.</p> <p>Laurelled male head. (R.) Pan holding up his hand; ΘΕΣΣΑΛΩΝΙΚΗΩ. Mon.</p>
IV.	271	IV½.	Æ	<p>PERGAMUS in MYSIA.</p> <p>Head of Esculapius. (R.) Serpent erected on its tail; behind, a small Owl; ΣΚΑΗΠΙΟΥ ΣΩΤΗΡΟΣ.</p>
V.	266	III½.	AV	<p>PARIUM in MYSIA.</p> <p>Head of Ceres veiled. (R.) Goat kneeling; ΠΑ.</p>
VI.	256	III.	Æ	<p>MARONEA in THRACE.</p> <p>Horse. Mon. (R.) Vine loaded with grapes in a hollow square; ΜΑΡΩΝΙΤΩΝ.</p>
VII.	258	II.	AR	<p>NEAPOLIS in THRACE.</p> <p>Female Head: ΝΕΟΠ. (R.) Mask thrusting out the tongue.</p>
VIII.	287	II.	AR	<p>CAMARINA in SICILY.</p> <p>Swan and Lizard. (R.) Hollow Square in four compartments.</p>

* One of the coins called Cistophori. The Engraver has turned the obverse upside down.





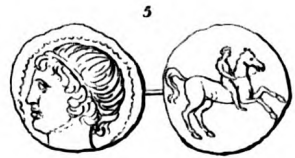


PLATE IX.

No. of Plate.	General No.	Size.	Metal.	DESCRIPTION.
I.	327	VIII.	Æ	<p>LYSIMACHUS.</p> <p>Beardless head of Ammon. (R.) Pallas armed; on her shield the Gorgon's head; opposite, an Eagle. ΒΑΣΙΛΕΩΣ ΛΥΣΙΜΑΧΟΥ.</p>
II.	328	VII.	AR	<p>SELEUCUS.</p> <p>Head of Hercules (in rictu Leonis.) (R.) Jupiter Ætophore sitting: head of Pallas. ΣΕΛΕΥΚΟΥ ΒΑΣΙΛΕΩΣ.</p>
III.	325	VII.	AR	<p>DEMETRIUS (POLIORCETES.)</p> <p>Victory on the prow of a galley. (R.) Neptune brandishing a trident: bipennis, Mon. ΔΗΜΗΤΡΙΟΥ ΒΑΣΙΛΕΩΣ.</p>
IV.	301	IV.	AV	<p>ALEXANDER (The Great.)</p> <p>Head of Pallas. (R.) Winged Victory with chaplet and trident: before, a Bird. ΑΛΕΞΑΝΔΡΟΥ.</p>
V.	322	IV.	Æ	<p>PHILIP ARIDÆUS.</p> <p>Youthful head to the right. (R.) Horseman.</p>
VI.	304	IV.	AV	<p>PHILIP ARIDÆUS.</p> <p>Head of Pallas. (R.) Winged Victory with a chaplet: Pentagon: Serpent coiled. ΦΙΛΙΠΠΟΥ.</p>
VII.	298	IV.	AV	<p>PHILIP, (Son of Amyntas.)</p> <p>Laurelled head of Apollo. (R.) Naked figure in a Biga. ΦΙΛΙΠΠΟΥ.</p>
VIII.	339	III.	Æ	<p>UNCERTAIN (of the Kings of) MACE- DONIA.</p> <p>Head of Medusa on a shield. (R.) Helmet with crest. Mon. B A.</p>

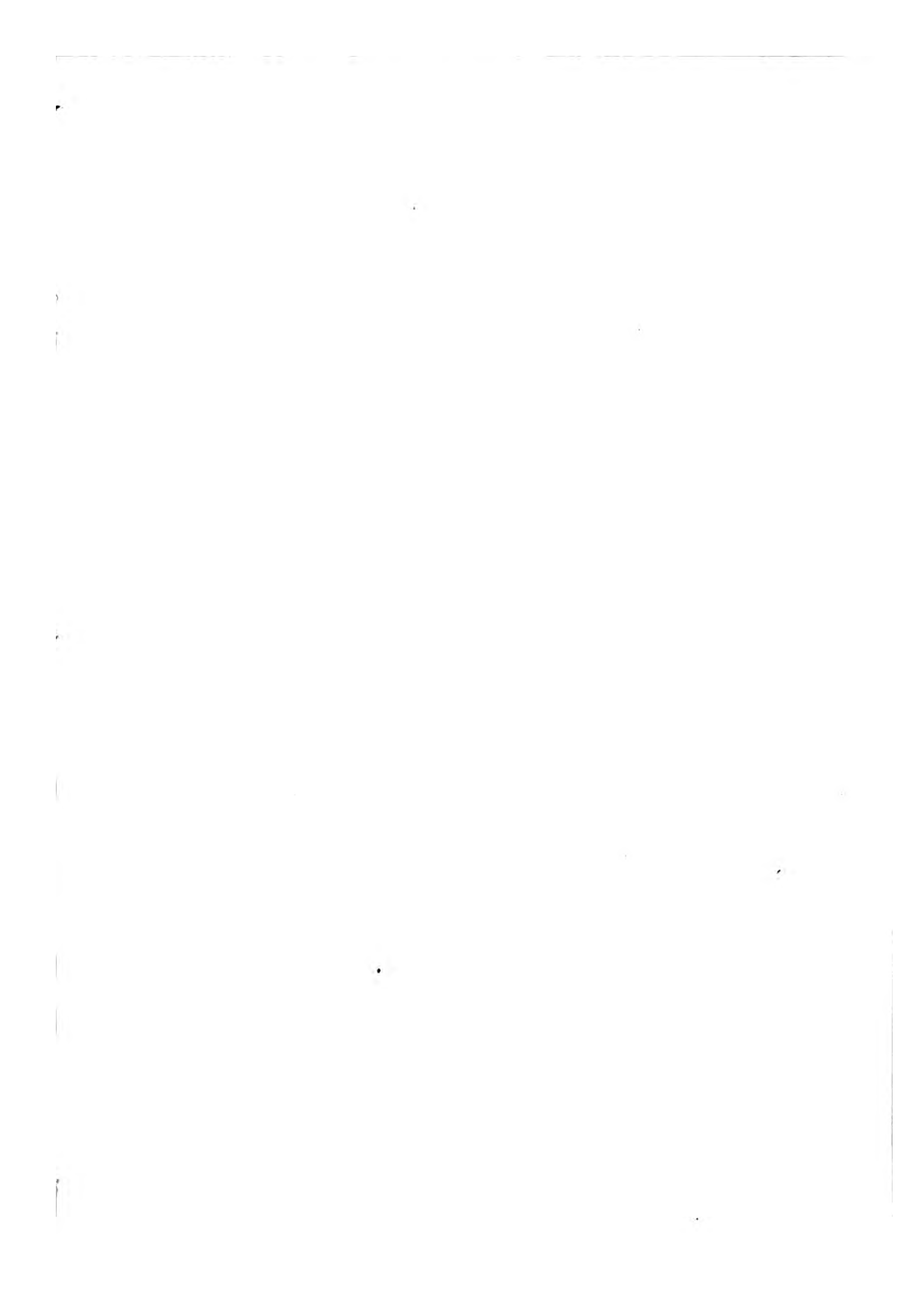
PLATE X.

No. of Plate.	General No.	Size.	Metal.	DESCRIPTION.
I.	273	VIII.	AR	<p>EPHESUS.</p> <p>Head of the Emperor Philip. ΜΥ ΦΙΛΙΠΠΟΣ ΚΑΙCΑΡ. (R.) Image of Diana betwixt two Stags. ΕΦΕCΙΩΝ ΑΡΤΕΜΙC ΑCΤΛΟ.</p>
II.	281	VII.	Æ	<p>CÆSAREA in CAPPADOCIA.</p> <p>Head of the Emperor Commodus. ΚΟΜΟ ΑΝΤΟΝΕΙ. (R.) Mount Argæus on an altar: below. CΤΙΑ ΜΗΤΡΟΠΟ ΚΑΙCΑΡ.</p>
III.	279	IV½.	Æ	<p>TRALLES in LYDIA.</p> <p>Head of the Emperor Gordian. ΑΝΤΟ ΓΟΡΔΙΑΝΟC.C. (R.) Lion, ΤΡΑΛΛΙΑΝΟΝ.</p>
IV.	278	IV.	Æ	<p>SARDES in LYDIA.</p> <p>Head of the Emperor Tiberius. (R.) Indian Bacchus, with spear and cantharus. ΕΠΙΜΙΝΔΙΟΥ.</p>
V.	272	III½.	Æ	<p>EPHESUS.</p> <p>Head of Macrinus. ΜΟΠΗΛ ΜΑΚΡΕΙΝΟC. (R.) Boar running. ΕΦΕCΙΩΝ.</p>
VI.	277	IV.	Æ	<p>PHILADELPHIA in LYDIA.</p> <p>Laurelled head. (R.) Ceres marching with a cornucopiæ and garland. ΦΙΛΑΔΕΛΙΩΝ.</p>
VII.	275	III.	Æ	<p>PHOCÆA in IONIA.</p> <p>Head of Mercury with a Petasus. (R.) Half Griffin running. ΦΩΚΑΕΩΝ.</p>
VIII.	286	III.	AR	<p>HERACLEA in CYRENAICA.*</p> <p>Head of Ammon. (R.) Crowned female head. ΗΡΑΚΑΕΙ.</p>

* Exceeding rare.







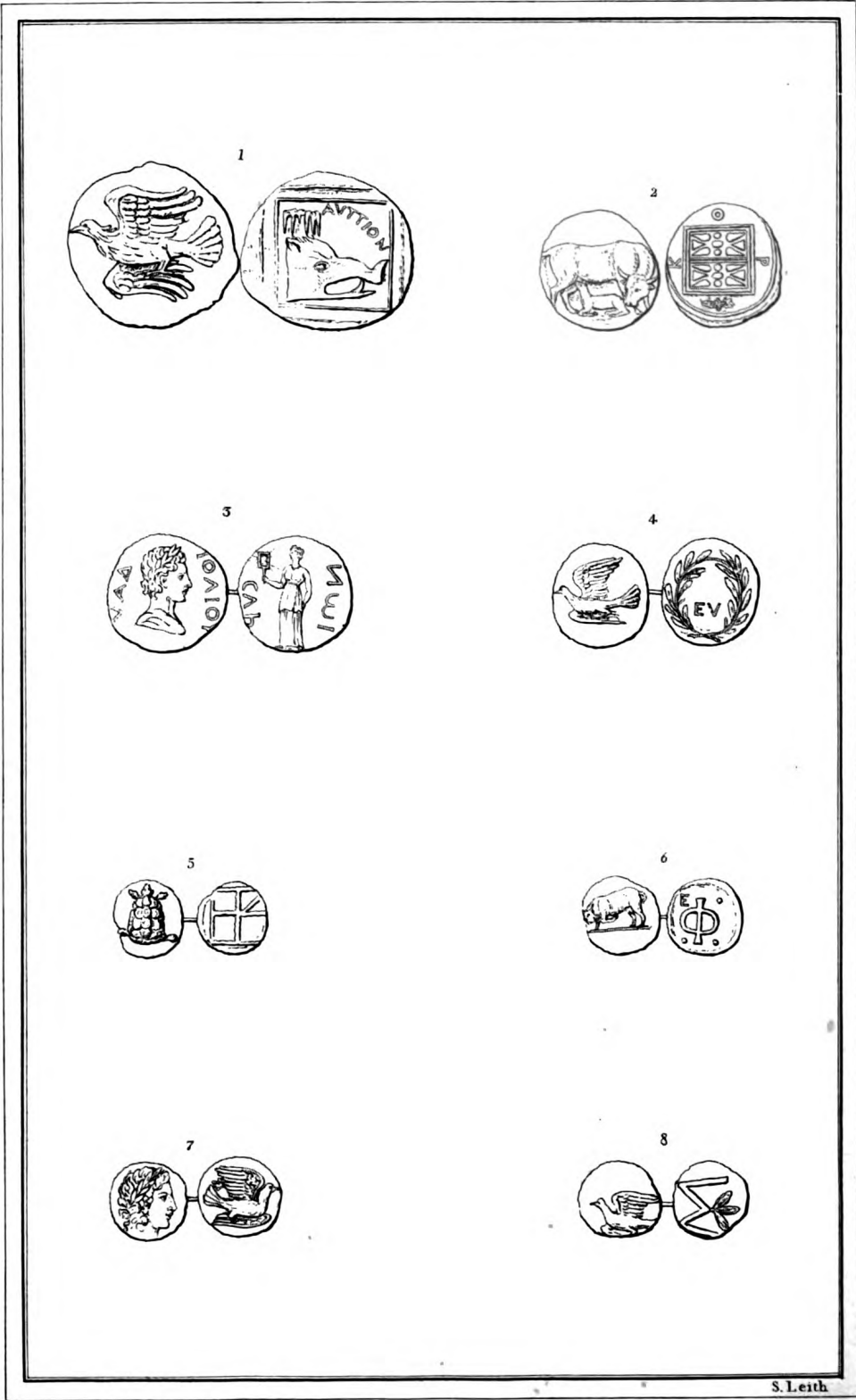


PLATE XI.

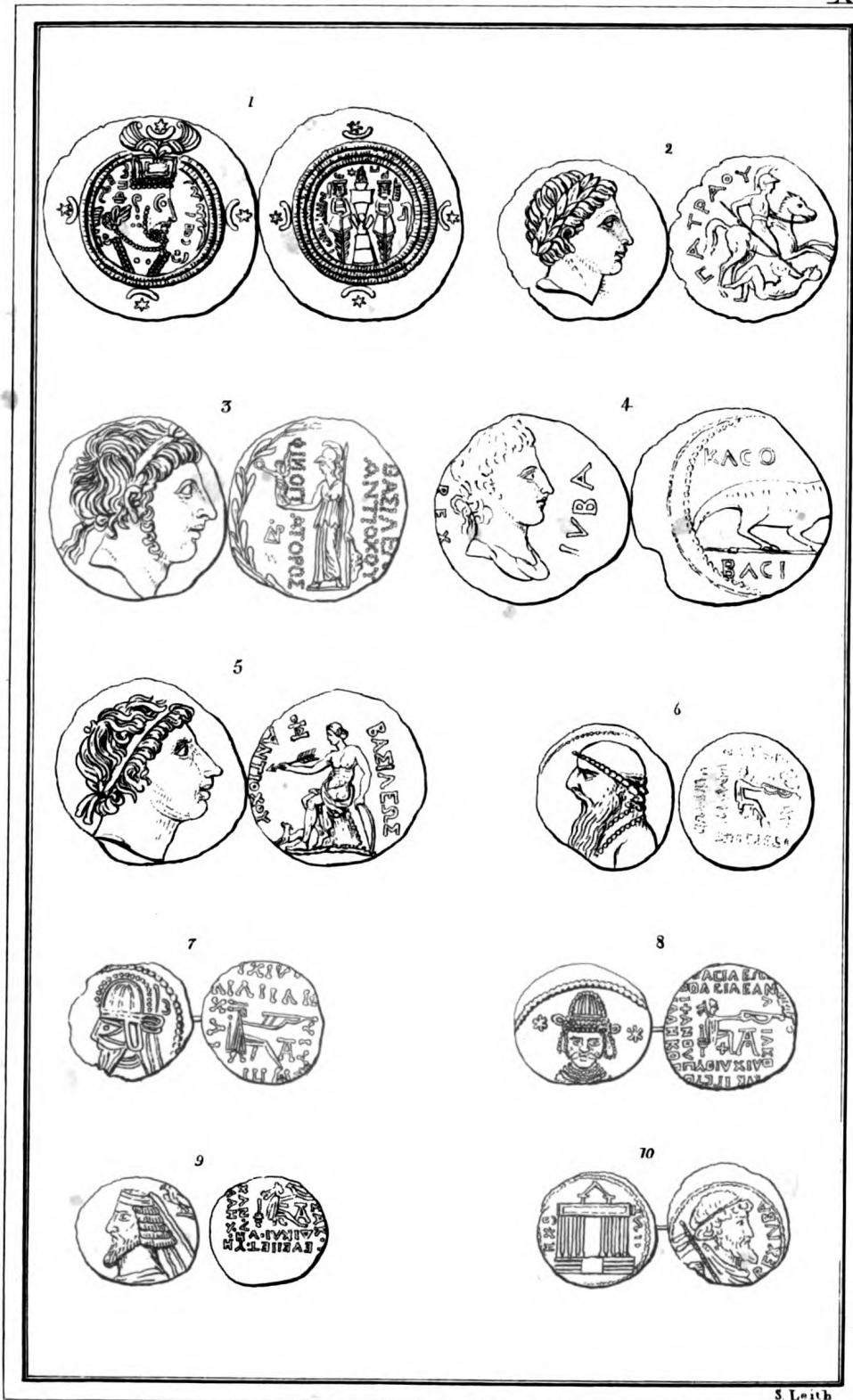
No. of Plate.	General No.	Size.	Metal.	DESCRIPTION.
I.	242	VII.	AR	LYTTUS in CRETE. Dove flying. (R.) Boar's head. ΑΤΤΤΙΟΝ.
II.	237	IV.	AR	CORCYRA. Cow giving suck to a Calf. (R.) Gardens of Alcinous; around KOP.
III.	226	IV.	Æ	SAMOS. Youthful head, ΑΔΙΟΛΙΟΥ. (R.) Female holding a tessera. CAA : ΙΩΝ.
IV.	190	III.	Æ	EUBŒA. Dove flying. (R.) ΕΥ within a laurel wreath.
V.	185	I.	AR	EGINA. Water Tortoise. (R.) Hollow square divided into compartments.
VI.	244	II½.	Æ	PHESTUS in CRETE. Bull butting. (R.) ΦΕ. in a hollow square.
VII.	212	I.	AR	SIPHNOS. Laurelled head of Apollo. (R.) Dove flying. ΣΙ.
VIII.	215	II.	Æ	SIPHNOS. Dove. (R.) Σ.

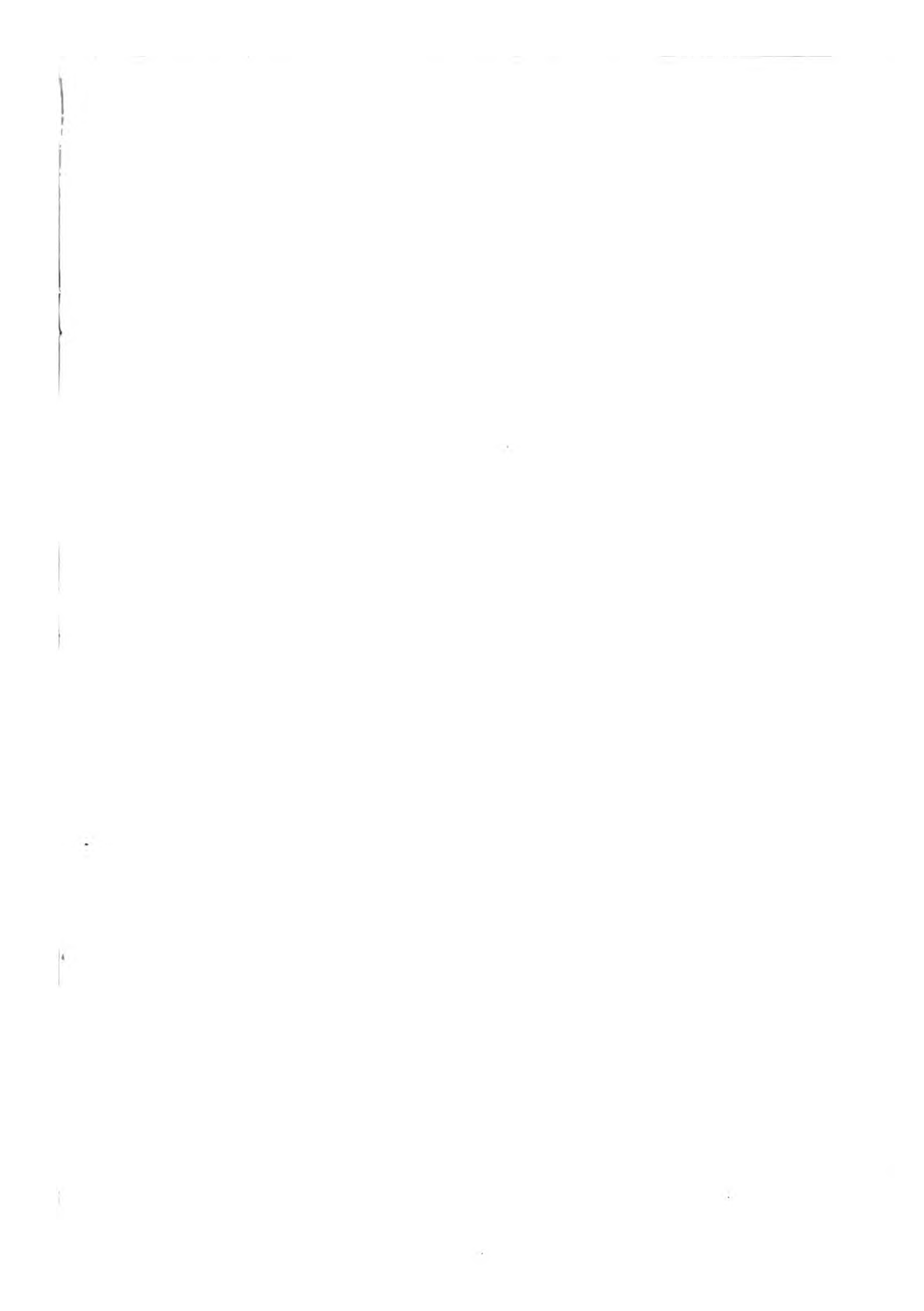
PLATE XII.

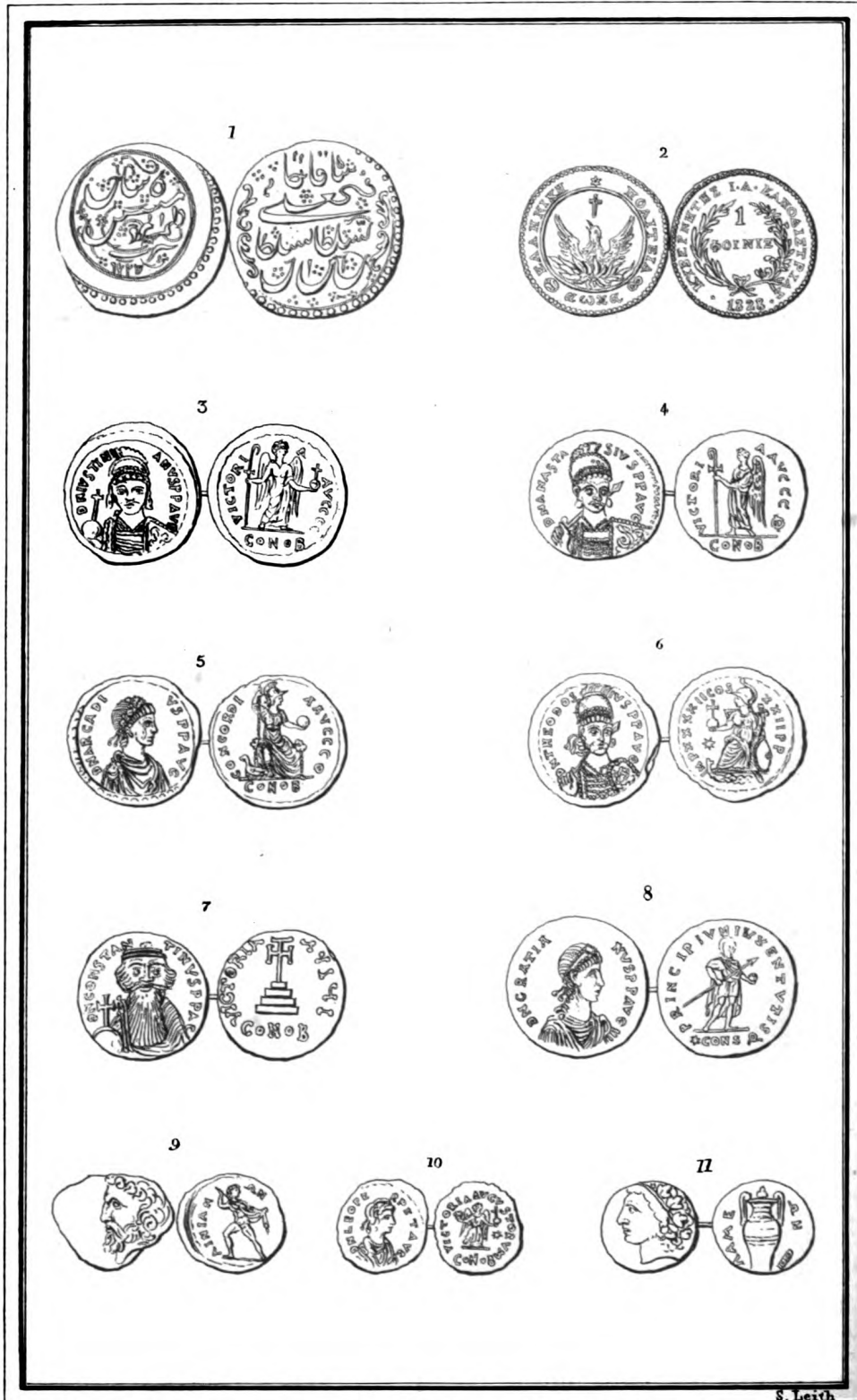
No. of Plate.	General No.	Size.	Metal.	DESCRIPTION.
I.	375	VIII.	AR	SASSANIDES of PERSIA. (Uncertain King.)* Head of a King, slightly bearded, with lofty crest, globe, and crescent. Persic legend. (R.) Fire altar between two Magi. Persic legend.
II.	340	VI.	AR	PATRÆUS, King of PÆONIA. Head of Juno. (R.) Horseman piercing with his lance a fallen foe. ΠΑΤΡΑΟΥ.
III.	345	VIII.	AR	ANTIOCHUS IX. King of SYRIA. Youthful head. (R.) Pallas Ætrophore armed with shield and spear. Mon. ΒΑΣΙΛΕΩΣ ΑΝΤΙΟΧΟΥ ΦΙΛΟΠΑΤΟΡΟΣ.
IV.	377	VIII.	Æ	JUBA II. King of MAURITANIA, and (his Mother.) CLEOPATRA. Youthful Head, REX JUBA. (R.) Crocodile, ΚΛΕΟ ΒΑΚΙ.†
V.	341	VIII.	AR	ANTIOCHUS I. (SOTER) King of SYRIA. Head of the King. (R.) Apollo sitting; an arrow in his right hand, a bow in his left; before, a dog. Mon. ΒΑΣΙΛΕΩΣ ΑΝΤΙΟΧΟΥ.
VI.	367	IV½	AR	ARSACIDES of PARTHIA. (Uncertain King.) Bearded head of a King, with large nose, and low Tiara. (R.) Parthian sitting, and drawing a bow. Very confused Legend. ΕΥΕΡΓΕΤΟΥ ΜΕΓΑΛΟΥ.‡
VII.	374	IV.	AR	ARSACIDES of PARTHIA. (Uncertain King.) Head of a King with lofty Tiara, and flowing beard. (R.) Very confused Image and Legend.
VIII.	369	V.	AR	MEHERDATES, King of PARTHIA. Full youthful face, with mustaches and no beard, covered with a Tiara between two stars. (R.) Parthian sitting, with a bow. Mon. ΒΑΣΙΛΕΩΣ ΒΑΣΙΛΕΩΝ ΑΡΣΑΚΟΥ ΕΥΕΡΓΕΤΟΥ ΔΙΧΑΙΟΥ ΕΠΙΦΑΝΟΥΣ ΙΑΛΗΝΟΥ.
IX.	354	IV.	AR	PHRAHATES (IV.) of PARTHIA. Bearded head, the hair disposed in five rows; behind, an Eagle crowning the King. (R.) Parthian sitting; behind, a caduceus. ΣΑΚΟΥ ΕΥΕΡΓΕΤΟΥ ΔΙΧΑΙΟΥ ΦΑΝΟΥΣ ΕΛΗΝΟΥ.
X.	376	IV.	AR	JUBA (I.) of MAURITANIA. Bearded head, with a crown; sceptre over the right shoulder. REX JUBA. (R.) Octastylon temple. Numidian letters.

* Found near Arbela. † Brought from Morocco.

‡ Brought from Persia.



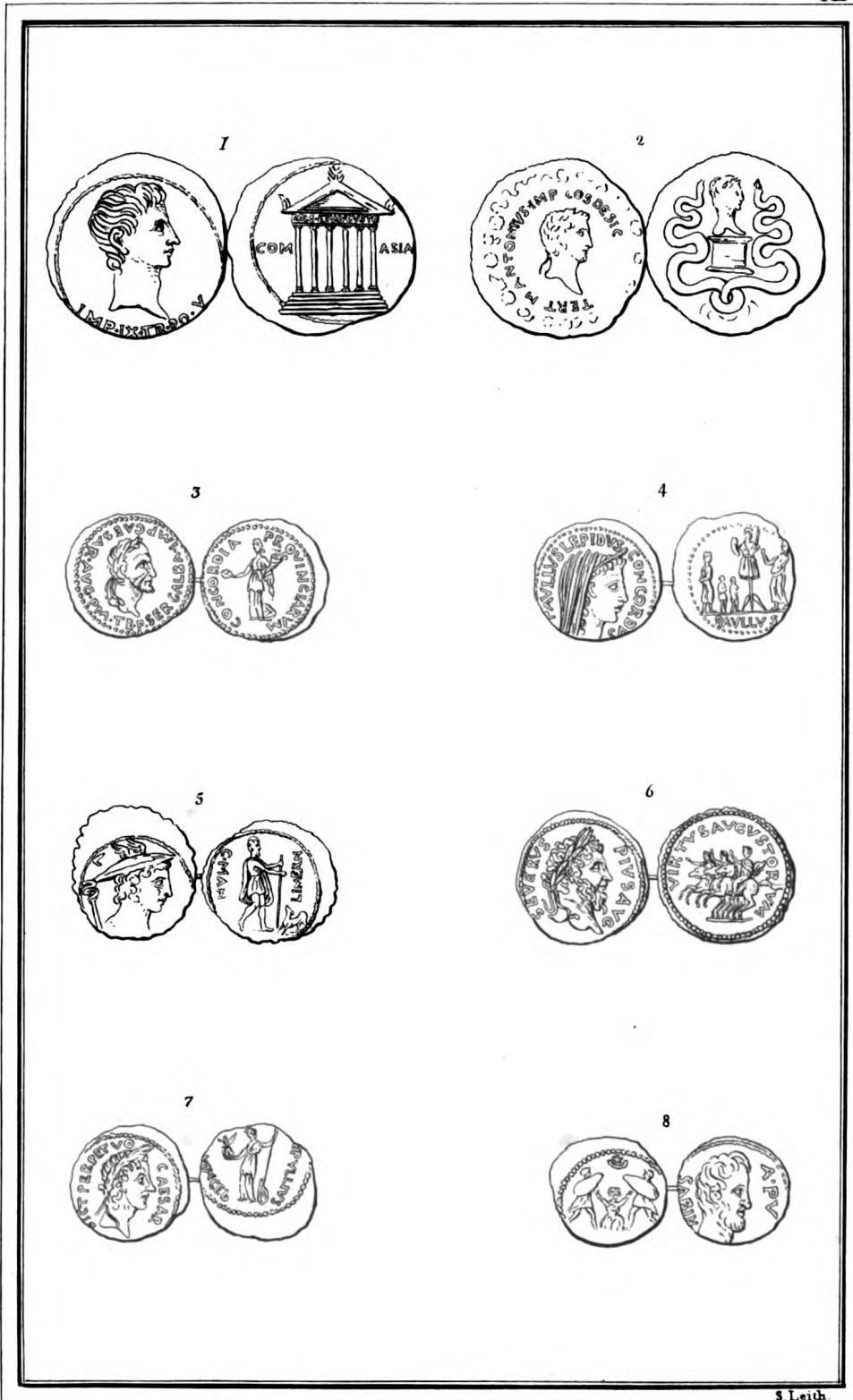




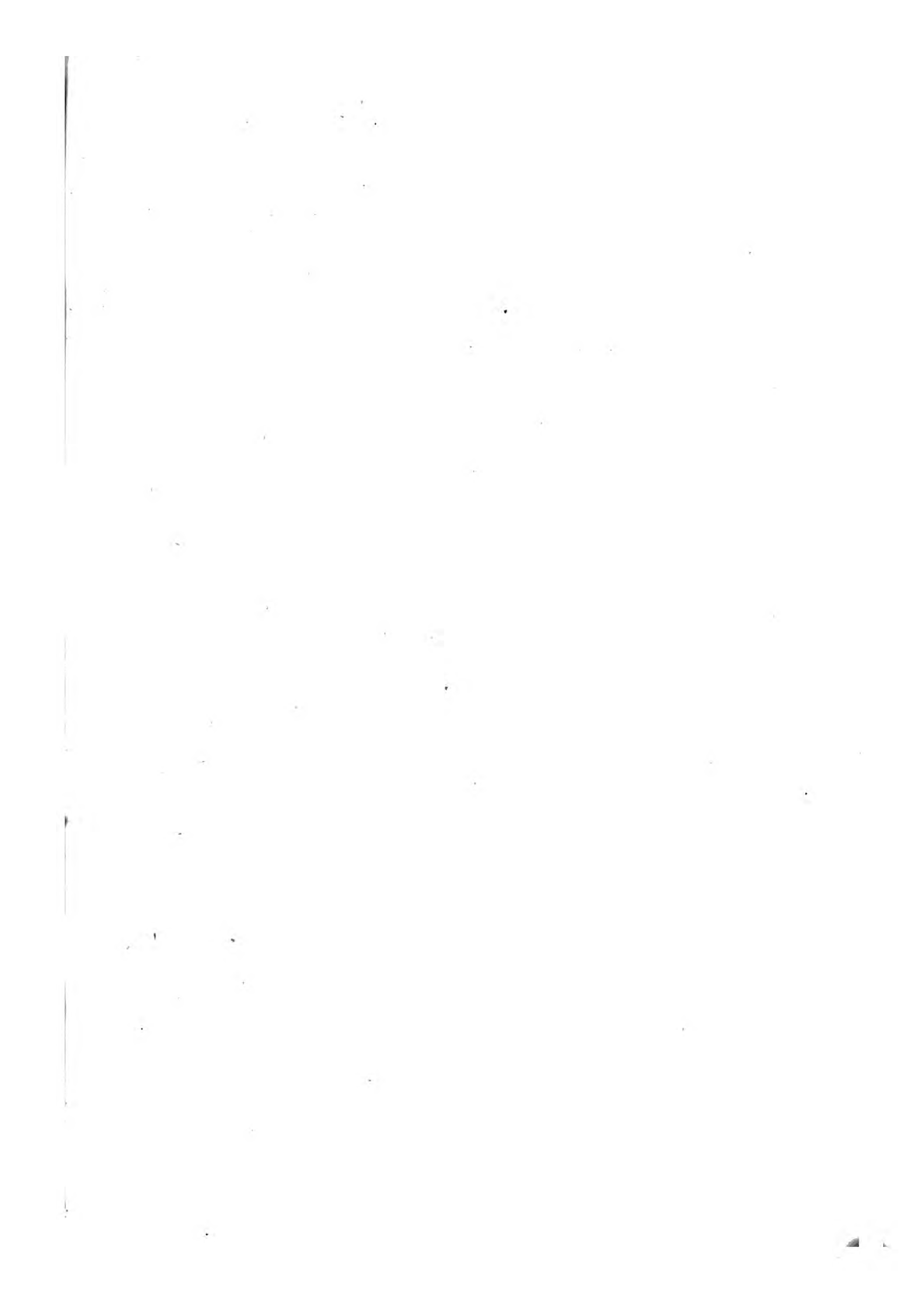
No. of Plate.	General No.	Size.	Metal.	DESCRIPTION.
I.		VII.	AV	PERSIAN (TOMAN.) (Modern.) (Legend in Persian.) Shah Kajar Fœthi Ali, King of Kings. (R.) (Legend in Persian.) Struck at the mint of Kashan, 1225, (of the Hejira) answering to A. D. 1810.
II.		V.	AR	GREEK PHŒNIX. (Modern.) Phœnix amidst flames; above, a cross. ΕΛΛΗΝΙΚΗ ΠΟΛΙΤΕΙΑ; with the date αωαα, (1821.) (R.) Ι. ΦΟΙΝΙΞ, within a wreath; ΚΥΒΕΡΝΗΤΗΣ, Ι. Α. ΚΑΠΟΔΙΣΤΡΙΑΣ, 1828.
III.		IV.	AV	JUSTINIANUS. Head of Justinian. D. N. IVSTINIANVS. PP. AVG. (R.) Victory, with globe and crosier, VICTORIA AVGGG; below, CONOB.
IV.		IV.	AV	ANASTASIUS. Head of Anastasius. D. N. ANASTASIVS. PP. AVG. (R.) Victory, with crosier, VICTORIA AVGGG, Φ; below, CONOB.
V.		IV.	AV	ARCADIUS. Head of Arcadius. D. N. ARCADIVS. PP. AVG. (R.) Rome setting her right foot on the prow of a galley. CONCORDIA AVGGG, Φ.
VI.		IV.	AV	THEODOSIUS II. Head of Theodosius. D. N. THEODOSIVS. PP. AVG. (R.) Rome setting, before her a star. IMP. XXXXII. COS. XXII. PP.
VII.		IV.	AV	CONSTANTINE IV. Head of Constantine. D. N. CONSTANTINVS. PP. AVG. (R.) Cross on five steps. VICTORIA, AVGG, in badly formed characters; below, CONOB.
VIII.		IV.	AV	GRATIANUS. Head of Gratian. D. N. GRATIANVS, PP. AVG. Emperor marching with spear and globe. PRINCIPIVM IVVENTVTIS CONS, between a star and garland.
IX.	181	III $\frac{1}{2}$.	AR	AENIANS. Head of Jove. (R.) Warrior preparing to sling, his left arm enveloped in his cloak. ΑΙΝΙΑΝΩΝ.
X.		II.	AV	LEO II. Head of Leo. D. N. LEO PERPET. AVC. (R.) Victory, with cross and garland; before, a star; VICTORIA AVGVSTORVM: below, CONOB.
XI.	180	III.	AR	LAMIA. Head of Bacchus, crowned with Ivy. (R.) Diota around it, ΔΑΜΙΕΩΝ.

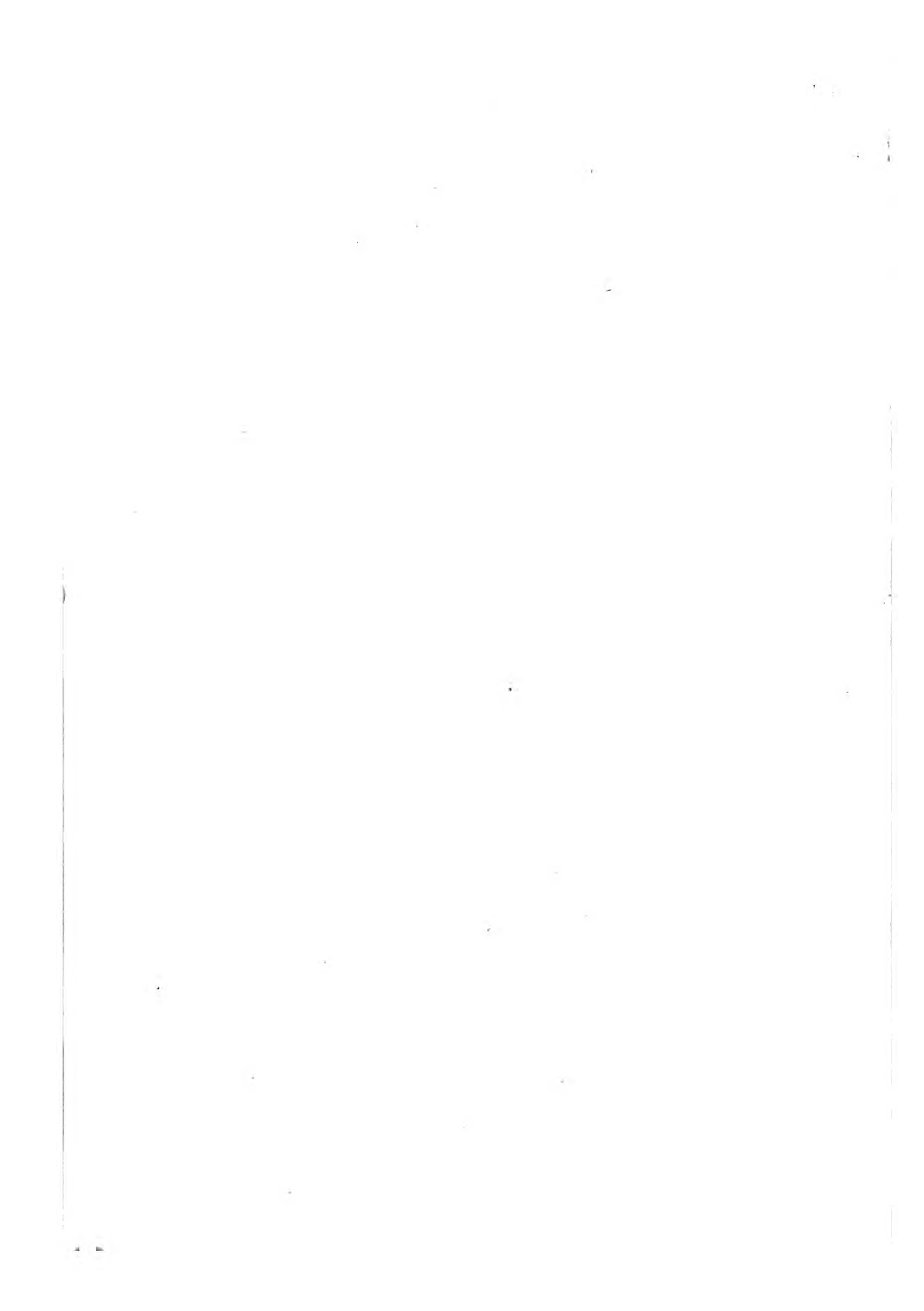
PLATE XIV.

No. of Plate.	General No.	Size.	Metal.	DESCRIPTION.
I.	467	VIII.	AR	AUGUSTUS. Head of Augustus. IMP.IX.TR.PO.V. (R.) Hexastylon temple. COM.ASIA. On the Epistyle, ROM.ET.AVGVSTO
II.	460	VII.	AR	MARK ANTONY. (CISTOPHORE.) Head of Mark Antony. M.ANTONIVS.IMP. COS.DESIG - - TERT. (R.) Bust of the same above a cista, between two serpents.
III.	475	4½.	AV	GALBA. Head of Galba. SER.GALBA.IMP.CAESAR. AVG.PM.TR.P. Concord with her attributes. CONCORDIA PROVINCIARVM.
IV.	418	IV.	AR	CONSULAR, OF THE ÆMILIAN FAMILY. Head of Concord veiled. PAVLLVS LEPIDVS CONCORDIA. (R.) Trophy and Captives. PAVLLVS.
V.	439	IV.	AR	MAMILIAN FAMILY. Head of Mercury, with a Petasus. (R.) Ulysses in the habit of a traveller, with staff and dog. C.MAM - - LIMETAN.
VI.	529	V.	AV	SEVERUS. Head of Severus. SEVERVS PIVS AVG. (R.) Emperor and his Sons on Horseback. VIRTVS AVGVSTORUM.
VII.	447	IV.	AR	SEPULLIAN FAMILY. Laurelled Head of Cæsar. CAESAR.DICT. PERPETVO. (R.) Venus standing with Spear, and image of Victory. P.SPVLLIVS MACER.
VIII.	451	IV.	AR	TITURIAN FAMILY. Bearded Head. A.PV SABIN. (R.) Tarpeia between two Soldiers; above, the Sun and Moon.













X

