



Bodleian Libraries

UNIVERSITY OF OXFORD

This book is part of the collection held by the Bodleian Libraries and scanned by Google, Inc. for the Google Books Library Project.

For more information see:

<http://www.bodleian.ox.ac.uk/dbooks>



This work is licensed under a Creative Commons Attribution-NonCommercial-ShareAlike 2.0 UK: England & Wales (CC BY-NC-SA 2.0) licence.

1.
A
C A T A L O G U E

O F
All the DEMESNE LANDS
(With the several Erections thereon)

O F T H E
Most Noble WILLIAM, Duke of Powis,
D E C E A S E D,

Situated in the PARISH, and within the
M A N O R, of H E N D O N,
In the County of *Middlesex*,

Containing, according to a Survey lately made by Mr. JAMES
CROW, 1226 Acres, 2 Roods, and 23 Perches,
W H I C H,

By ORDER of the TRUSTEES under the said DUKE's *Will*,
(A N D A L S O

By Virtue of an ACT of PARLIAMENT,))

Will be Sold by A U C T I O N

By Mr. L A N G F O R D,

At his *House* in the *Great Piazza, Covent-Garden*,

On *Tuesday* and *Wednesday* the 19th and 20th of *October*, 1756.

Beginning each Day at TWELVE o' Clock precisely.

The *Lands* aforesaid are divided into *Eighteen Lots*; in the Distribution of which, great Care has been taken that the *several Grounds contained in each Lot*, should be *contiguous to each other*. Each Lot also is made a *separate Estate*; and, it is presumed, the whole will appear so well calculated for *Use, Pleasure, and Profit*, as to make *every Article a desirable Purchase*; and the more so as the *Lands* are all FREEHOLD, and will be sold TYTHE-FREE.

Mr. MESSEDER of *North-End*, near *Hampstead*, will attend every *Monday, Wednesday, and Friday*, to shew the Premises.

Printed Catalogues, with Plans of each Lot, may be had of Mr. Messeder, at *North-End*, and at Mr. Langford's in the *Great Piazza* aforesaid.

The LORDSHIP of the *valuable and extensive* MANOR of HENDON, with all its Fines, Quit Rents, Privileges, and Right of Advowson to the *Church of Hendon*, and also all the Great TYTHES of the said MANOR, will be sold at Mr. Langford's on the *Thursday and Friday* following; separate Catalogues of which will be timely delivered.



CONDITIONS of SALE.

1st **T**HAT the *highest Bidder*, for each Lot, is to be the *Buyer*; and if any Dispute shall arise between two or more Bidders, the *Premises* are to be *put up again and resold*.

2^{dly}, That no Person shall advance less than *Ten Pounds* at each *Bidding*.

3^{dly}, That the *several Purchasers* are to pay down *immediately*, into the Hands of Mr. LANGFORD, a Deposit of *TEN POUNDS per Cent.* in *Part* of the *Purchase Money*, and sign *Agreements* for the Payment of the *Remainder*, on or before *Lady-Day* next ensuing the Days of the Sale.

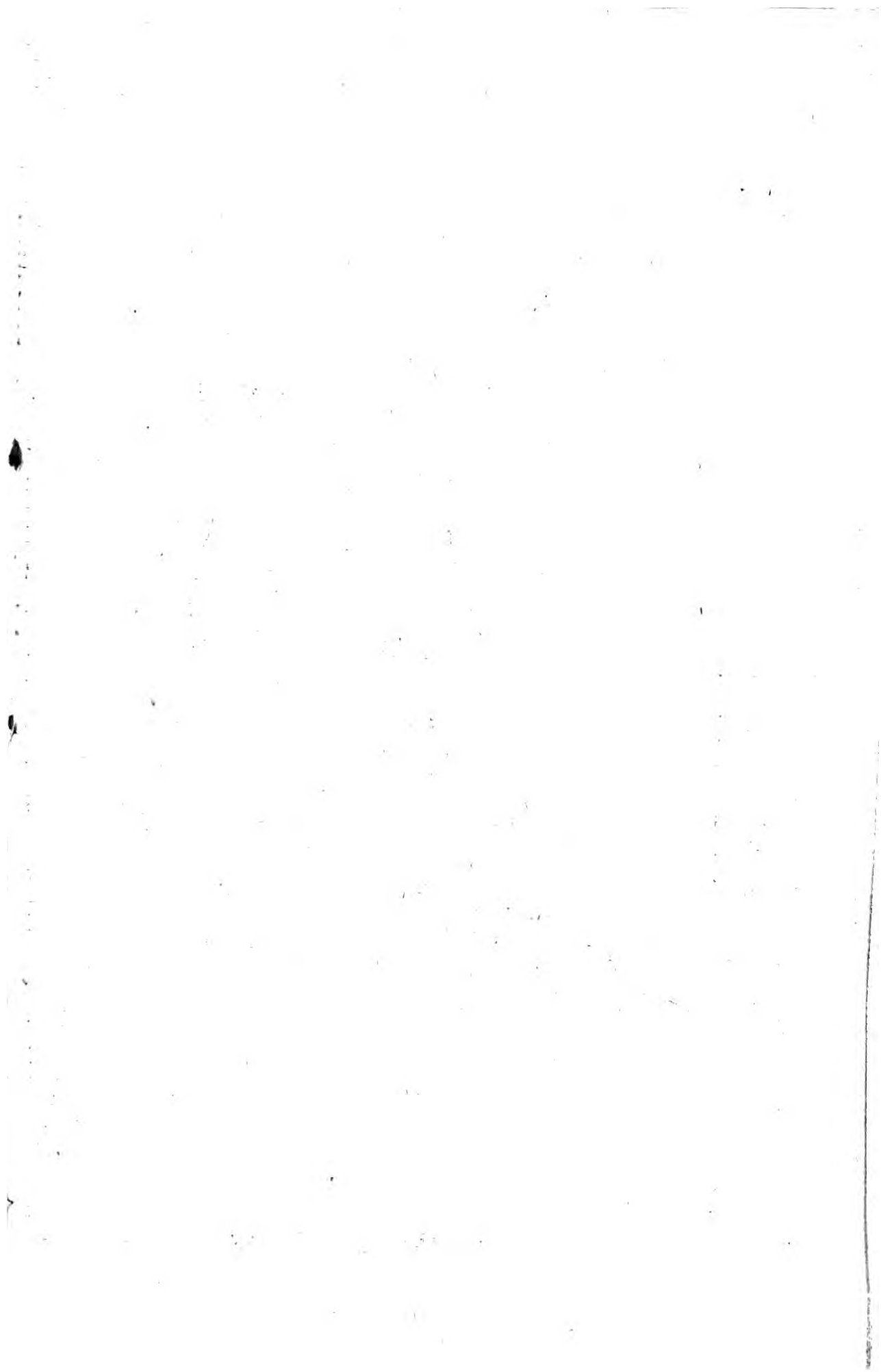
4^{thly}, That the *TRUSTEES* will, on their Part, and for the *Satisfaction* of the *several Purchasers*, enter also into *Agreements*, and engage to make and execute to them (*at their the said Purchasers Expence*) proper *Conveyances* of their *respective Lots*, free of all *Incumbrances*, upon their *Payment* of the *Remainder* of the *Purchase Money*, on or before *Lady-Day* next.

5^{thly}, That the *Purchasers* shall be allowed an *Interest* of *£ 3 per Cent.* upon the *Sums* by them *deposited*, from *Christmas Day* next, until the Time of completing the *Conveyance*.

6^{thly}, That the *Purchasers* shall be *entitled to the Rents and Profits*, from *Lady-Day* next, to which Time all *Taxes, Parish Rates*, and other *Incumbrances*, shall be *cleared* to the said *Purchasers*.

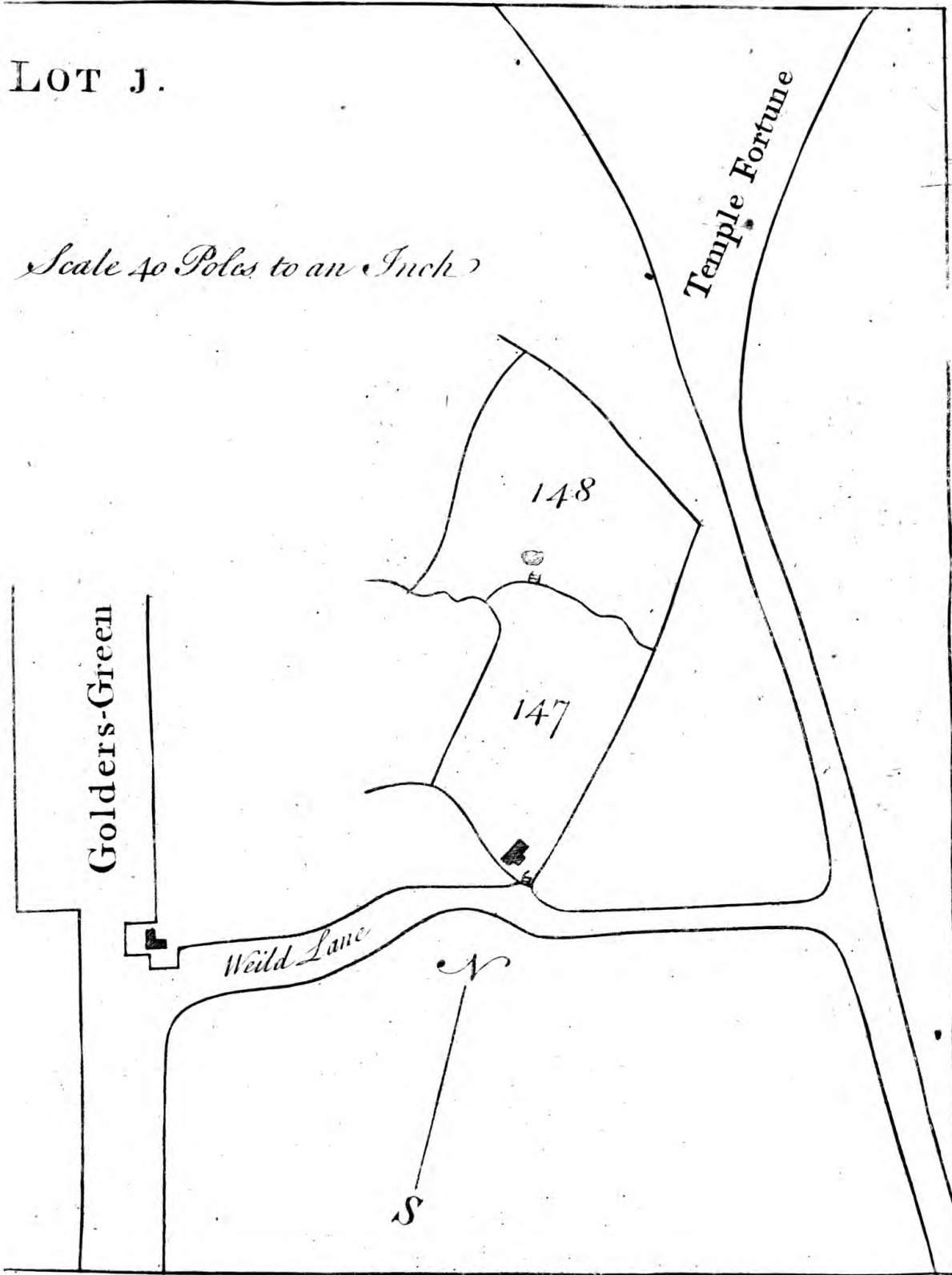
Lastly, That if any of the said *several Purchasers* shall *neglect* or *fail* to comply with the Conditions beforementioned, the *Money*, by them *deposited*, shall be *forfeited*, the said *TRUSTEES* shall be at full Liberty to *re-sell* such *Lot or Lots*, and the *Deficiency* (if, any there should be, by such second Sale) together *with all Charges attending the same*) shall be made good by the *DEFAULTERS*, at *this present Sale*.

Note, In some *Lots* the *Yearly Value*, will appear instead of the *Yearly Rent*, which could not be avoided, as these *Lots* are composed of *Lands in the Tenure of different Persons*, to the End that the *several Fields in each Lot* should lie *contiguous*; and the *Yearly Value* will also appear to exceed the *Yearly Rent*, occasioned by Means of *Lands in the Holding of one Tenant* at a certain *Rent*, being *separated* and *put into different Lots*; which Separation made it necessary to have a *Survey and Valuation* of each particular *Field*, and the *Value* thereupon was, upon a *very moderate Computation*, found to be such as is inserted in the *Catalogue*.



LOT J.

Scale 40 Poles to an Inch



The FIRST DAY's Sale.

Tuesday, *October* 19, 1756.

LOT I.

Numbers referring to the Plan.	Names of the Lands	Quality of the Lands.	Quantity of the Lands. Acr. Ro. Per,	Yearly Rent. £. s. d
	<i>John Buckingham, Tenant at Will.</i>			
	<i>To two Fields by Wild- Lane, near Hampstead-beath, viz.</i>			
147	<i>One, of 10 Acres with a Barn of 2 bay boarded and tiled in good Repair,</i>	<i>Meadow</i>	<i>10 3 3</i>	} 27 10 00
148	<i>One, of 12 Acres adjoining with a Pond,</i>	<i>Meadow</i>	<i>13 2 15</i>	
		<i>Acres</i>	<i>24 1 18</i>	
<p>To be put up at the Sum of £. 650 0 0</p>				

The First Day's Sale.

L O T 2.

Numbers referring to the Plan.	Names of the Lands.	Quality of the Lands.	Quantity of the Lands.			Yearly Value		
			Acr.	Ro.	Per.	£.	s.	d.
<i>Daniel Kemp, Tenant at Will.</i>								
1	To an extraordinary good Brick and Tiled House fash'd, with two Barns boarded and tiled: a good Stable, Cow-house, Woodhouse, Yard and Garden, and a Cart-house or Hay-house, all in good Repair, and pleasantly situated near <i>Hendon Church</i> ,		1	0	3			
5	Part of Church Yard Field	Meadow	0	2	3			
6	Garden Croft,	Pasture	1	0	36			
7	Thistley Downage,	Meadow	9	2	1			
11	Nearer Hales Field	Meadow	8	1	22			
12	Further Hales Field	Meadow	7	3	24			
14	Tree Field —	Meadow	8	0	32			
		Arable	8	3	20			
19	Little Hundred Acres —	Meadow	12	3	0	161	3	3
20	Great Do. —	Meadow	15	1	4			
22	The Ten Acres —	Arable	12	3	30			
23	Little Butchers Lays	Meadow	11	2	27			
		Arable	1	1	25			
24	Great Do. —	Meadow	5	0	8			
		Arable	11	0	8			
25	Great Hart —	Meadow	5	0	17			
		Arable	2	0	35			
26	Little Hart —	Meadow	5	2	22			
27	The 10 Acres adjoining,	Meadow	12	2	15			
28	Dock Field —	Meadow	12	3	10			

Acres 153 0 19

Note, No. 5, 6, and 7 are adjoining to the House, the other Numbers are all at a small Distance therefrom, between *Hall Lane* and *Edgware Road*.

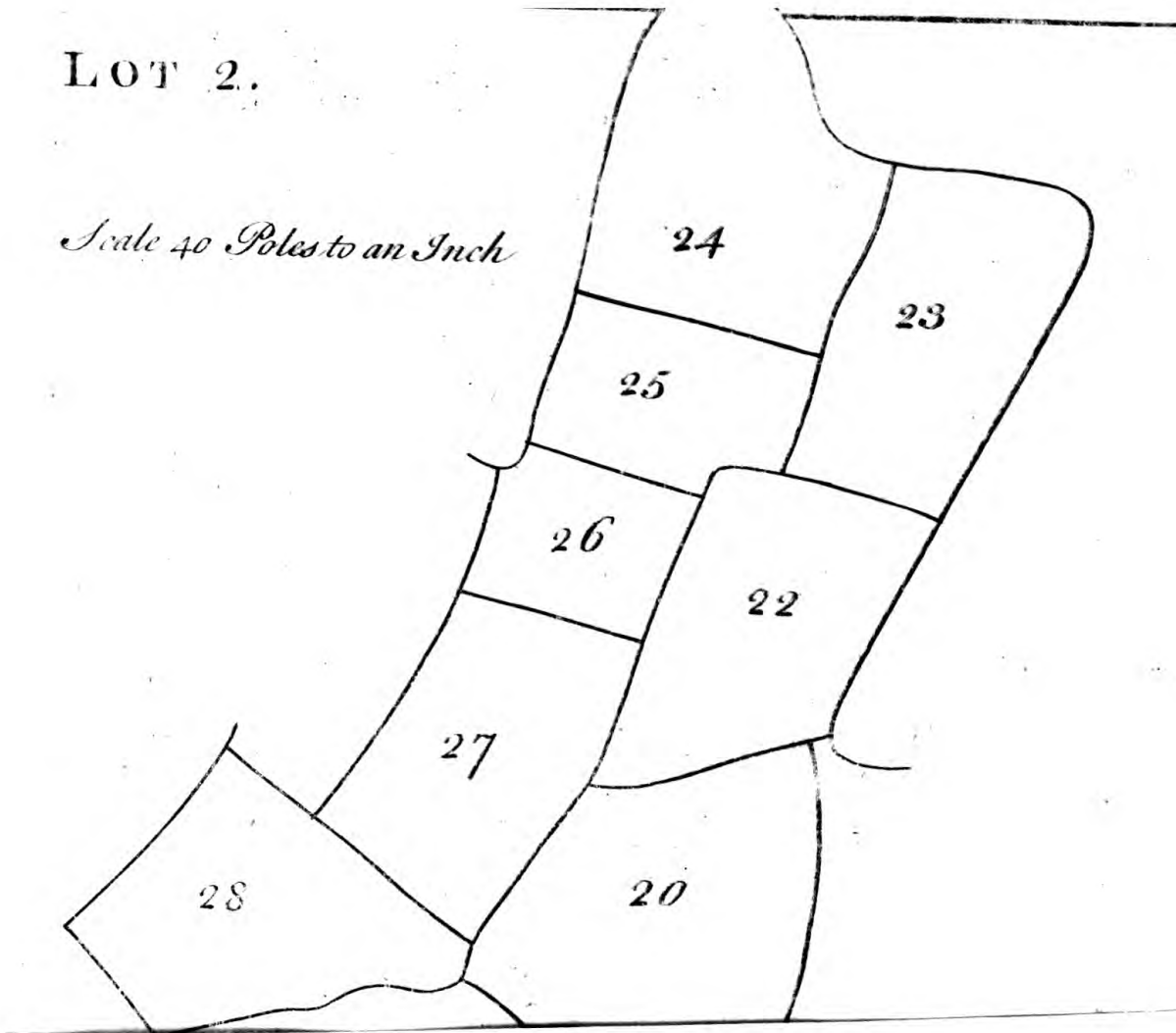
	Acr.	Ro.	Per.
In this Lot are of <i>Meadow</i>	115	1	25
<i>Arable</i>	36	1	38
<i>Pasture</i>	1	0	36
Together	153	0	19

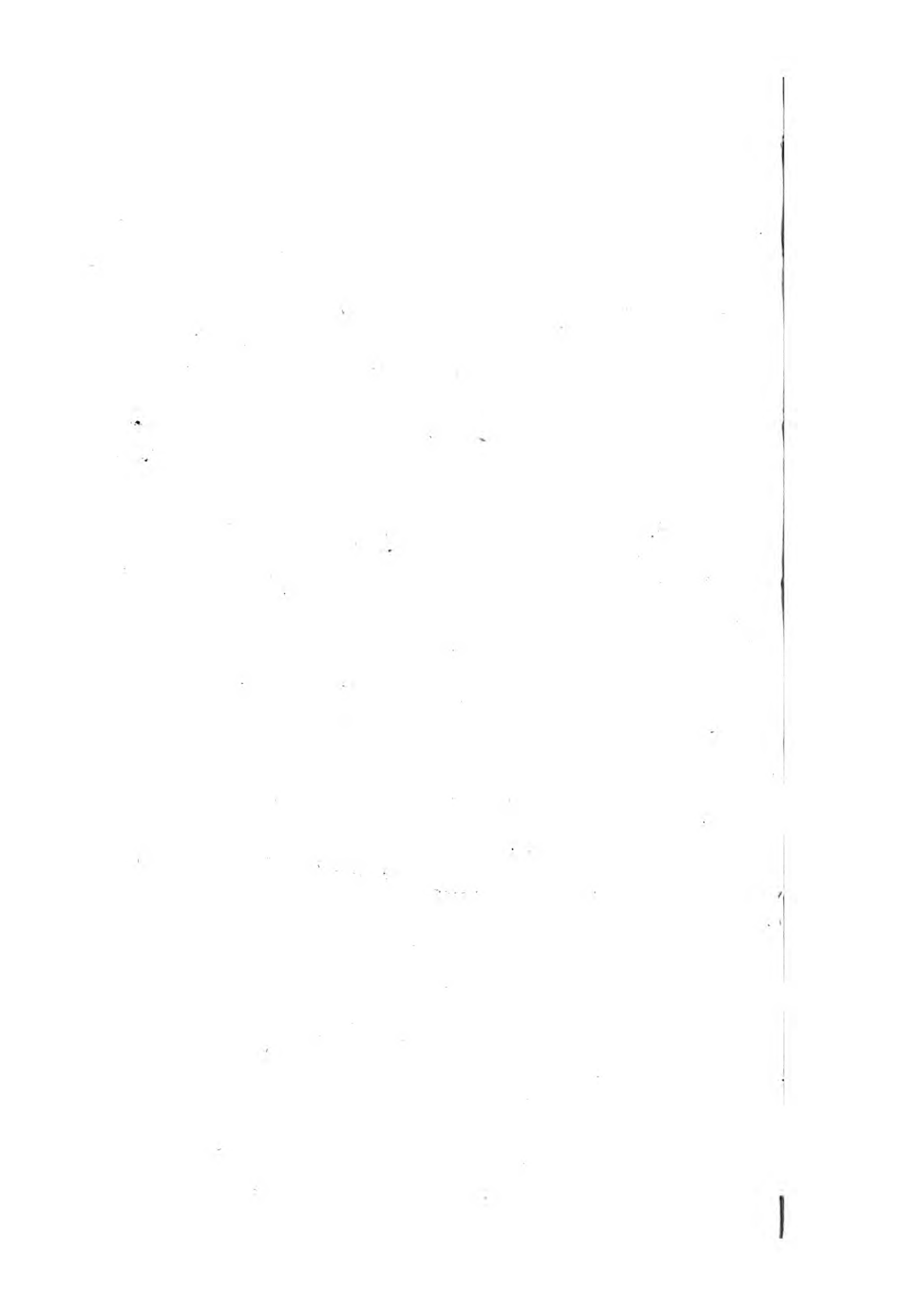
To be put up at the Sum of £ 4000 0 0

There are in the Hedge-rows of this Lot 176 Trees of Oak and 80 of Elm Timber and upwards of different Dimensions from 8 to 14 Inches diameter, exclusive of all Saplings, valued at £ 79.

LOT 2.

Scale 40 Poles to an Inch





The First Day's Sale.

L O T 3.

Numbers referring to the Plan.	Names of the Lands:	Quality of the Lands.	Quantity of the Lands. Acr. Ro. Per.	Yearly Value £. s. d
	<i>Daniel Kemp and John Cole</i> Tenants at Will.			
	<i>Daniel Kemp,</i> To Lands adjoining to <i>Church Lane</i> and the Road to <i>Burrows</i> , pleasantly situated.			
3	Upper Ravens Field	<i>Meadow</i>	8 3 11	} 29 00 04
4	Lower Ravens Field	<i>Meadow</i>	9 0 24	
43	<i>John Cole.</i> Hatch Croft	<i>Pasture</i>	6 3 24	
		Acres	24 3 16	

	Acr.	Ro.	Per.
<i>Meadow</i> in this Lot	17	3	35
<i>Pasture</i>	6	3	24
Together	24	3	19

To be put up at the Sum of £. 700

There are in this Lot 30 Oak Trees from 8 to 14 Inches Diameter, exclusive of Saplings, valued at £. 15.

The First Day's Sale:

LOT 4.

Numbers referring to the Plan.	Names of the Land.	Quality of the Lands.	Quantity of the Lands. Acr. Ro. Per.	Yearly Value. £. s. d.
	<i>Daniel Kemp</i> and others, Tenants at Will. To Lands adjoining to <i>Church End.</i>			
2	<i>Daniel Kemp,</i> The Croft or Rick Yard	Meadow	1 0 16	} 19 11 9
41	<i>Richard Goldington,</i> Sherrock Field —	Meadow	4 3 12	
44	<i>John Cole,</i> Great Sherrock Field	Meadow	9 3 10	
			Acres <u>15 2 38</u>	

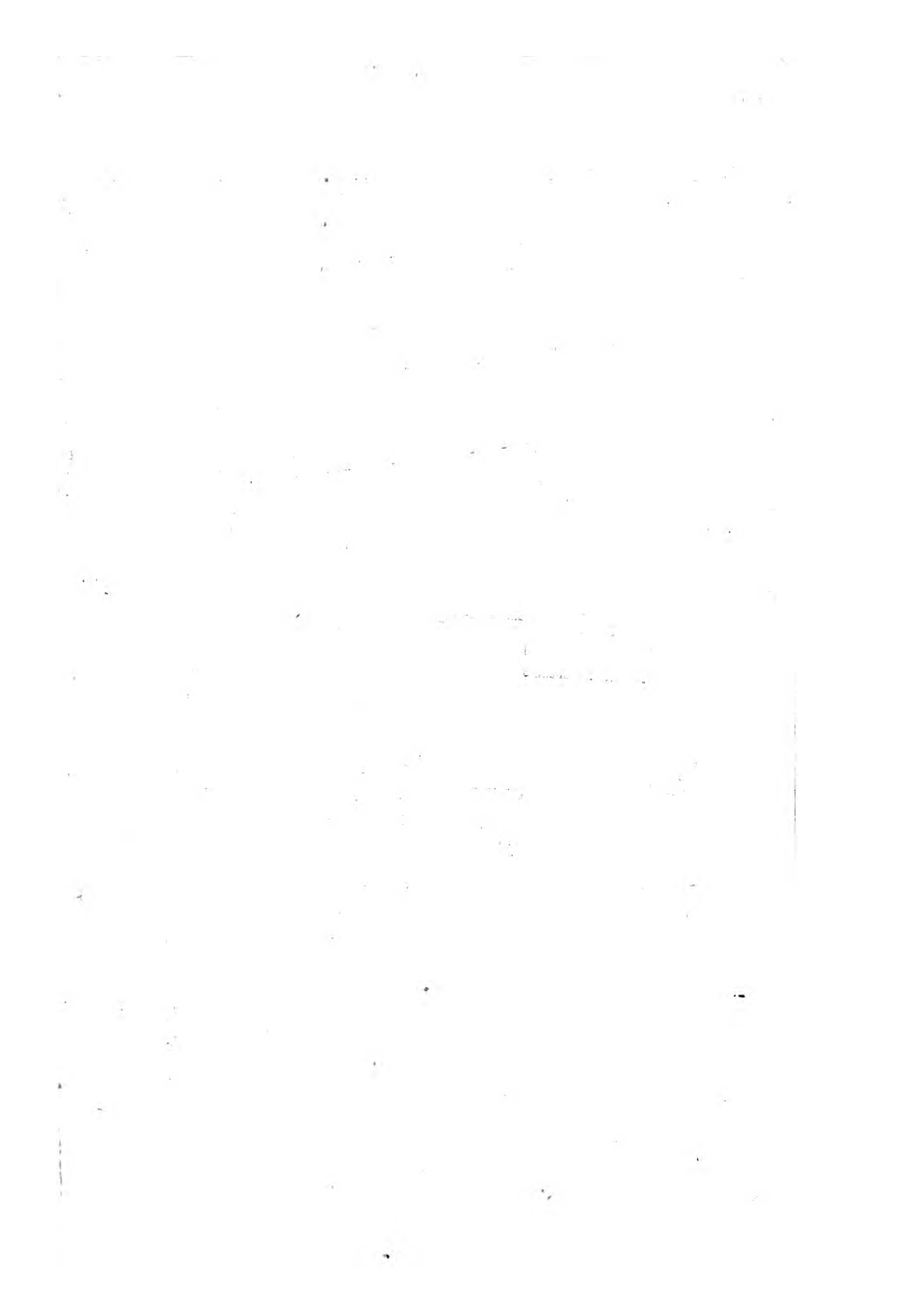
Add to this a Ground Rent of £. 2 per Ann. for the Dwelling-House adjoining, now in the Occupation of *William Gee*, and leased out to him for a Term of which 79 Years are to come from *Michaelmas* 1756. } 02 00 0

21 11 9

Note, The Common Way through No 44, to be reserved for the Use of the Purchaser of the Lands adjoining; in No. 2. is an Hay House, and in No. 41 a fine large Pond, well stock'd with Carp and Tench.

To be put up at the Sum of £. 500.

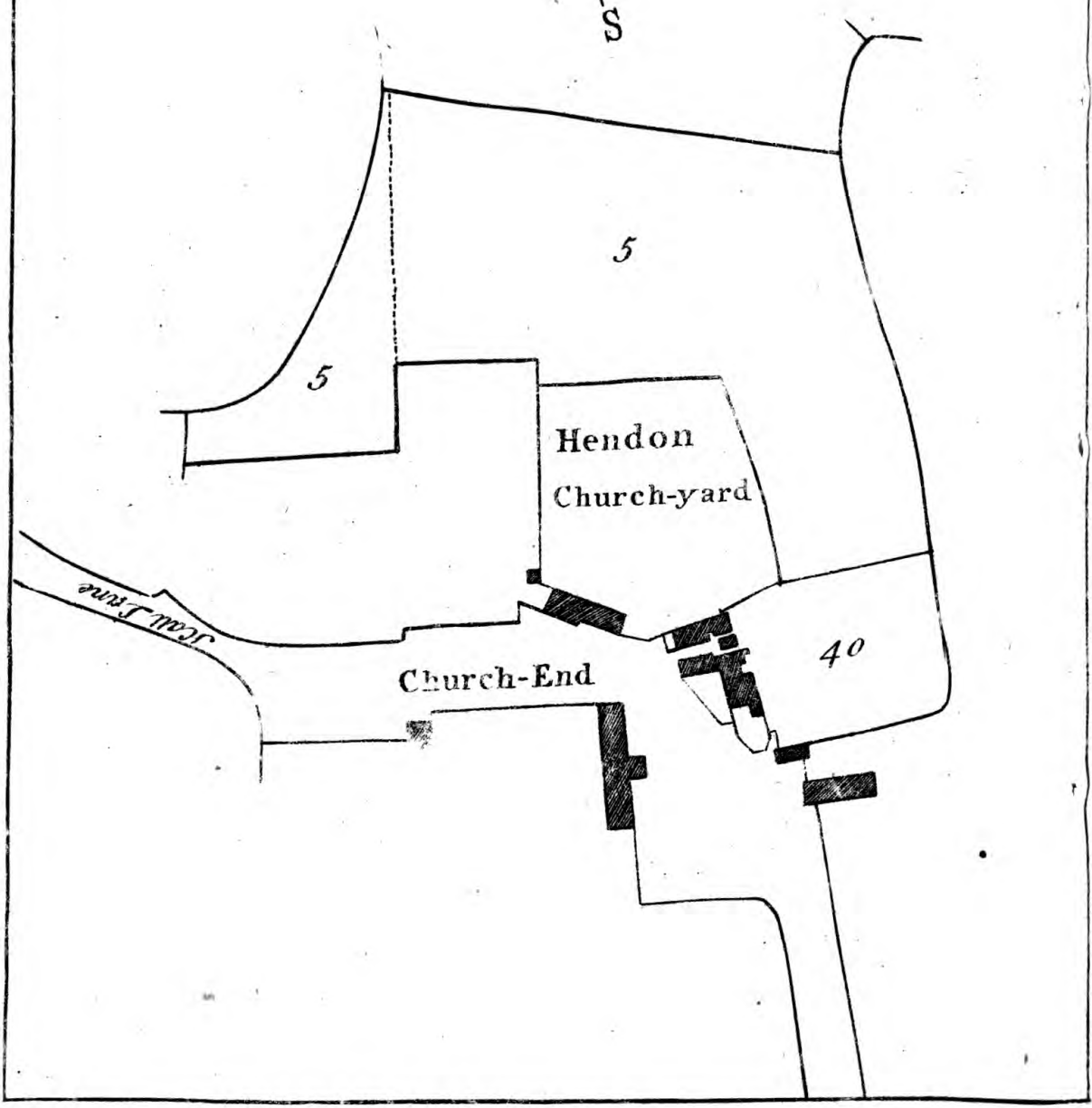
There are 20 Oak and 8 Elm Trees in this Lot from 8 to 14 Inches Diameter, exclusive of Saplings, valued at £. 22.



LOT 5.



Scale 10 Poles to an Inch



The First Day's Sale.

LOT 5.

Numbers referring to the Plan.	Names of the Lands.	Quality of the Lands.	Quantity of the Lands.			Yearly Value.		
			Acr.	Ro.	Per.	£.	s.	d.
	<i>Richard Goldington and Daniel Kemp, Tenants at Will.</i>							
40	An Orchard at Church-End, in the Occupation of <i>Richard Goldington,</i>	Meadow	0	2	4	5	3	0
5	Part of Church-Yard Field, in the Occupation of <i>Daniel Kemp,</i>		2	1	8			
	Also a Piece of Ground whereon stood a Barn lately burnt down at Church-End.							

Acres 2 3 12

To be put up at the Sum of £. 140 00 00

The First Day's Sale.

LOT 6.

Numbers referring to the Plan.	Names of the Lands.	Quality of the Lands.	Quantity of the Lands.		Yearly Value.		
			Ac.	Rö. Per.	£.	s.	d.
	Lands adjoining to <i>Parson's Street</i> , in the Occupation of <i>Robert Caper</i> and <i>John Cole</i> , Tenants at Will, and other Lands in the Occupation of the Representatives of <i>Rowland Fairchild</i> , on Lease for 21 Years dated <i>Feb. 10, 1741.</i>						
	<i>Robert Caper.</i>						
75	The Pightle adjoining to Little Sherrock-Field let at 2 <i>l.</i> 5 <i>s.</i> 0 <i>d.</i> per annum.	Meadow	1	1	8		
	<i>John Cole.</i>						
45	Little Sherrock-Field The Representatives of <i>Rowland Fairchild.</i>	Meadow	6	1	13	17 3 10	
74	Green Sherrock-Field by Vicarage-Vent,	Meadow	5	3	23		
			<hr/>				
			Acres	13	1	4	
			<hr/>				

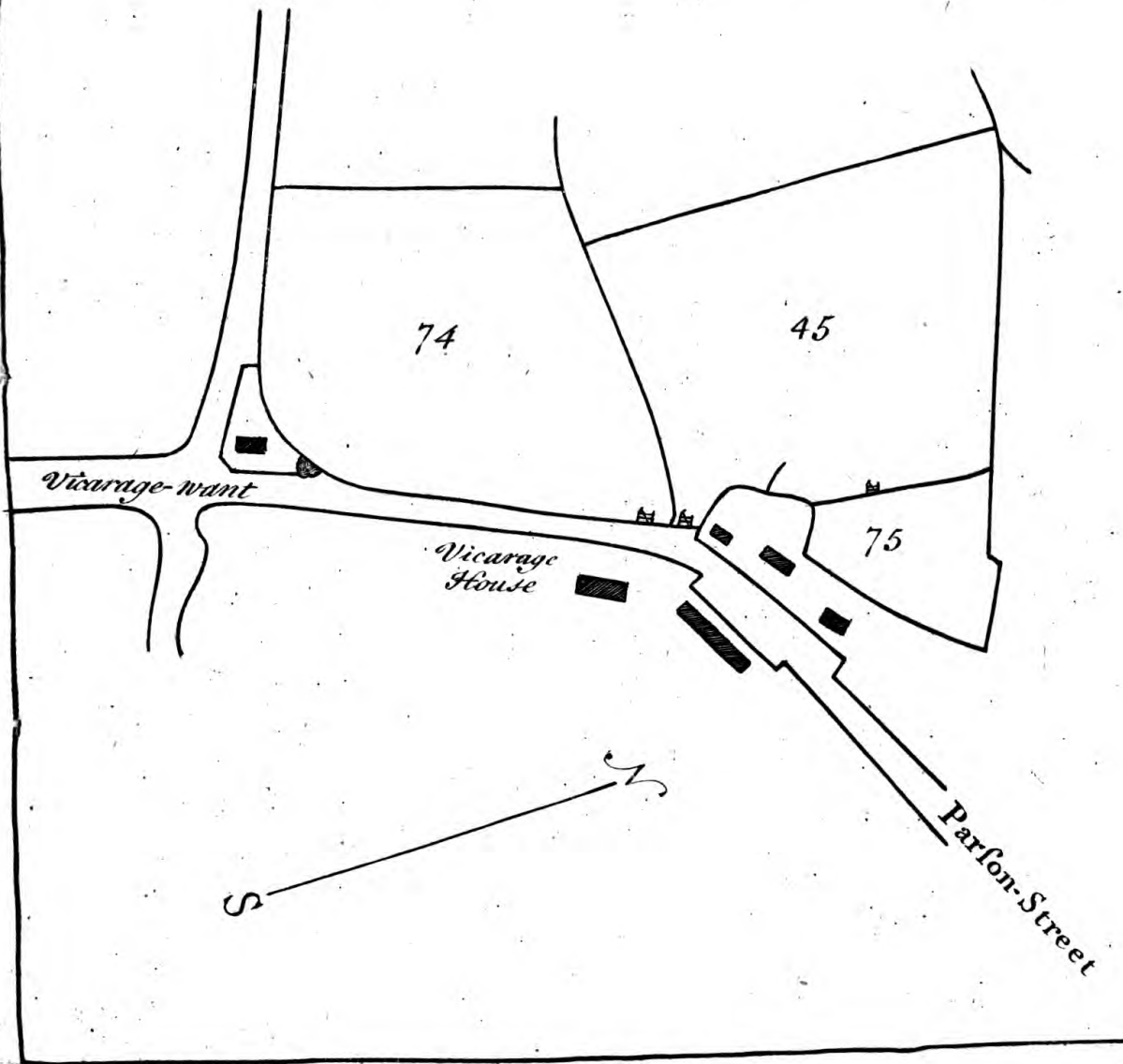
To be put at the Sum of £ 420

In this Lot there are 8 Trees of Oak, and 23 of elm Timber of different Dimensions, from 8 to 14 Inches diameter, exclusive of Saplings, valued at £ 15.

LOT 6

Hendon
Church
yard

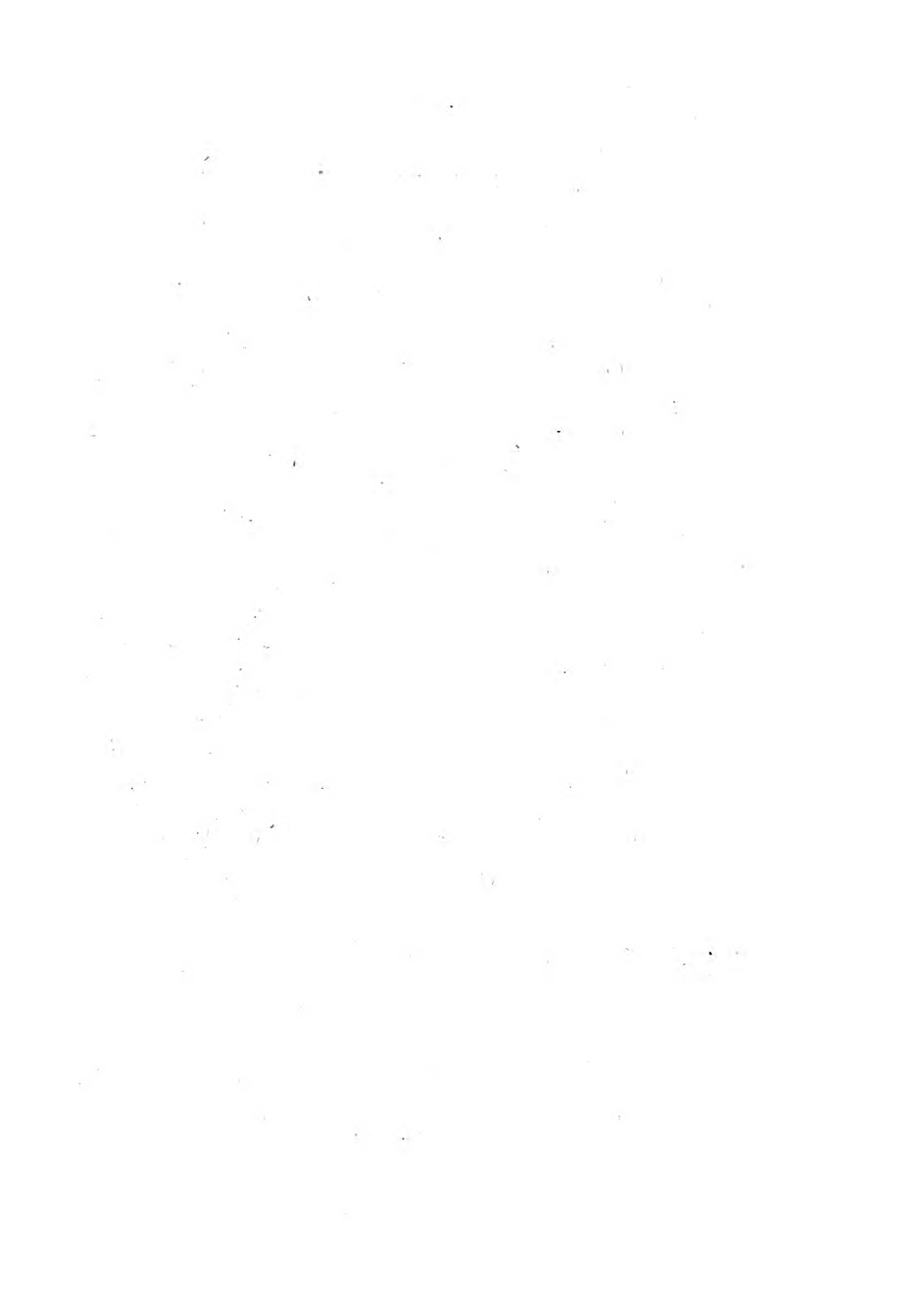
Scale 20 Poles to an Inch



Handwritten text, possibly a title or header, oriented vertically on the left side of the page.

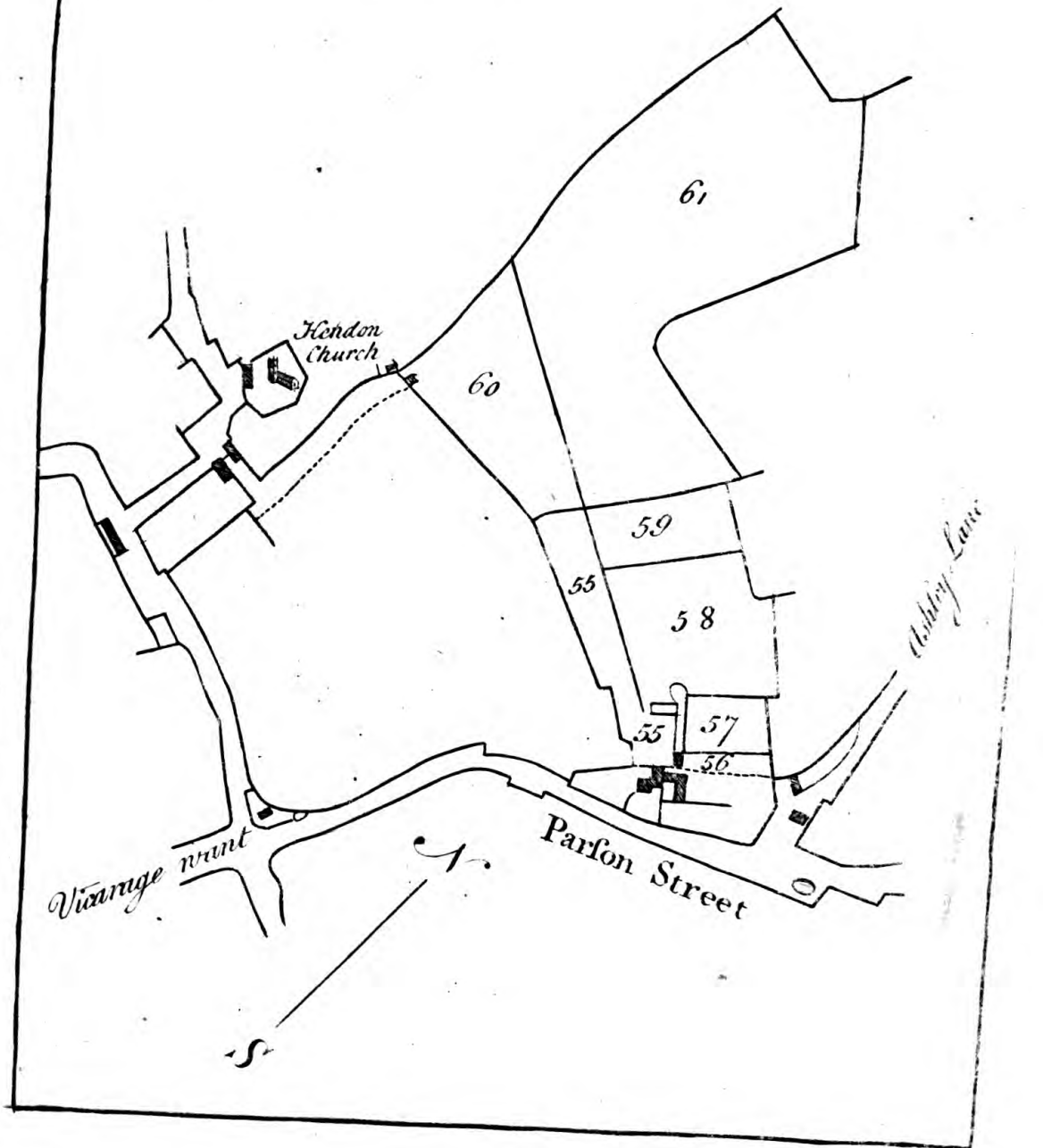
Handwritten text, possibly a title or header, oriented vertically on the left side of the page.

Main body of handwritten text, appearing as a list or series of entries, though the content is illegible due to fading and blurring.



LOT 7.

Scale 40 Poles to an Inch



The First Day's Sale.

L O T 7.

Numbers referring to the Plan.	Names of the Lands,	Quality of the Lands:	Quantity of the Lands. Acr. Ro. Per.	Yearly Rent, £. s. d.
	<i>The Heirs of George Ogle, Esq; deceased, Tenants to a Parcel of Lands now in the Occupation of Lady Torrington at Parson's Street, viz.</i>			
55	The Pleasure Ground and Part of the Garden		2 2 20	} 43 12 0
56	Part of the Kitchen-Garden taken from the Field		0 2 28	
57	A Pightle adjoining	<i>Meadow</i>	1 0 38	
58	The 4 Acre Close adjoining	<i>Meadow</i>	4 2 27	
59	The little Field adjoining	<i>Meadow</i>	2 1 2	
60	Little Downage Wood	<i>Pasture</i>	5 3 9	
61	Great Downage Wood	<i>Pasture</i>	21 1 8	
		Acres	33 2 12	

Of this Lot there are	Ac. Ro. Per.	
	3 1 8	of <i>Garden Ground.</i>
	8 0 27	of <i>Meadow.</i>
	27 0 17	of <i>Pasture.</i>
	38 2 12	

To be put up at the Sum of £ 1200
 The Timber in this Lot, consisting of 98 Trees of Oak &c. of different Dimensions is valued at £ 28 0 0.

The First Day's Sale.

L O T 8.

Numbers referring to the Plan.	Names of the Lands,	Quality of the Lands.	Quantity of the Lands. Acr. Ro. Per.	Yearly Rent. £. s. d.
62	The Representatives of the late <i>Rowland Fairchild</i> , Tenants, on Lease, for 21 Years, dated <i>Feb. 10, 1741</i> , to a genteel well-built new brick and fash'd House tiled, with a Yard and Garden, a Cart-house brick and tiled, two very good Stables brick and tiled, a large Barn of nine Bay boarded and tiled, a Carthouse and Woodhouse, situated at <i>Parson's Street</i> ,		0 3 28	
63	The Home Field and Pigh-tle now lying together,	} <i>Meadow</i>	8 2 28	
64	Wood Field, alias Holder's Hill-Field,	} <i>Meadow</i>	5 1 10	
65	The Foddering Yard or Field with a Pond,	} <i>Pasture</i>	0 3 5	} 52 11 3
66	Slaughterhouse Field	<i>Meadow</i>	5 2 25	
67	Carter's Field,	<i>Meadow</i>	7 3 38	
68	Middle Long Lands	<i>Meadow</i>	3 3 13	
69	Lower Long Lands, alias Bridge Field,	} <i>Arable</i> } } <i>Meadow</i> }	1 0 34 4 2 35	
70	Great Long Lands,	<i>Meadow</i>	9 3 32	
71	Upper Downage Woodfield,	<i>Arable</i>	10 1 3	
72	Lower Downage Wood-field,	} <i>Arable</i> } } <i>Meadow</i> }	5 2 13 4 2 35	
73	Downage Wood 8 Acres,	<i>Arable</i>	7 3 3	
Acres			76 1 24	

Add to this a *Ground Rent* of 5s. per Ann. for a boarded and tiled House and 2 Cottages ditto, adjoining to the Premises at *Parson's Street*, now let on Lease to *Mr. Goldington*, for a Term of which 17 Years are to come from *Michaelmas 1756*,

<i>Meadow</i> in this Lot	53	3	6
<i>Arable</i> ———	24	3	13
<i>Pasture</i> ———	0	3	5

0	5	0
52 16 3		

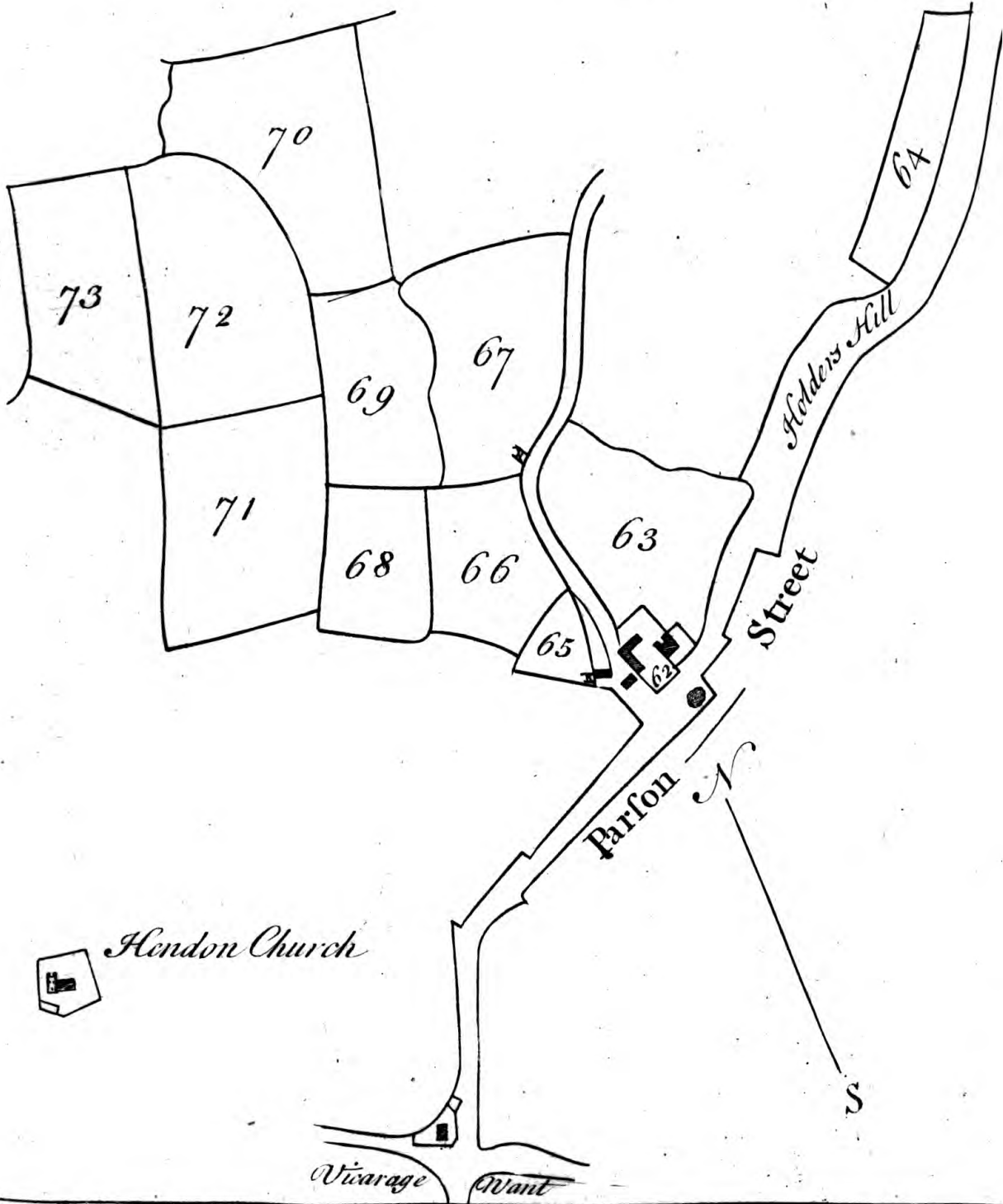
Together 76 1 24

To be put up at the Sum of £ 1350

There are 150 Trees of Oak, and 50 of Elm Timber in this Lot, computed to be worth £ 45.

LOT 8.

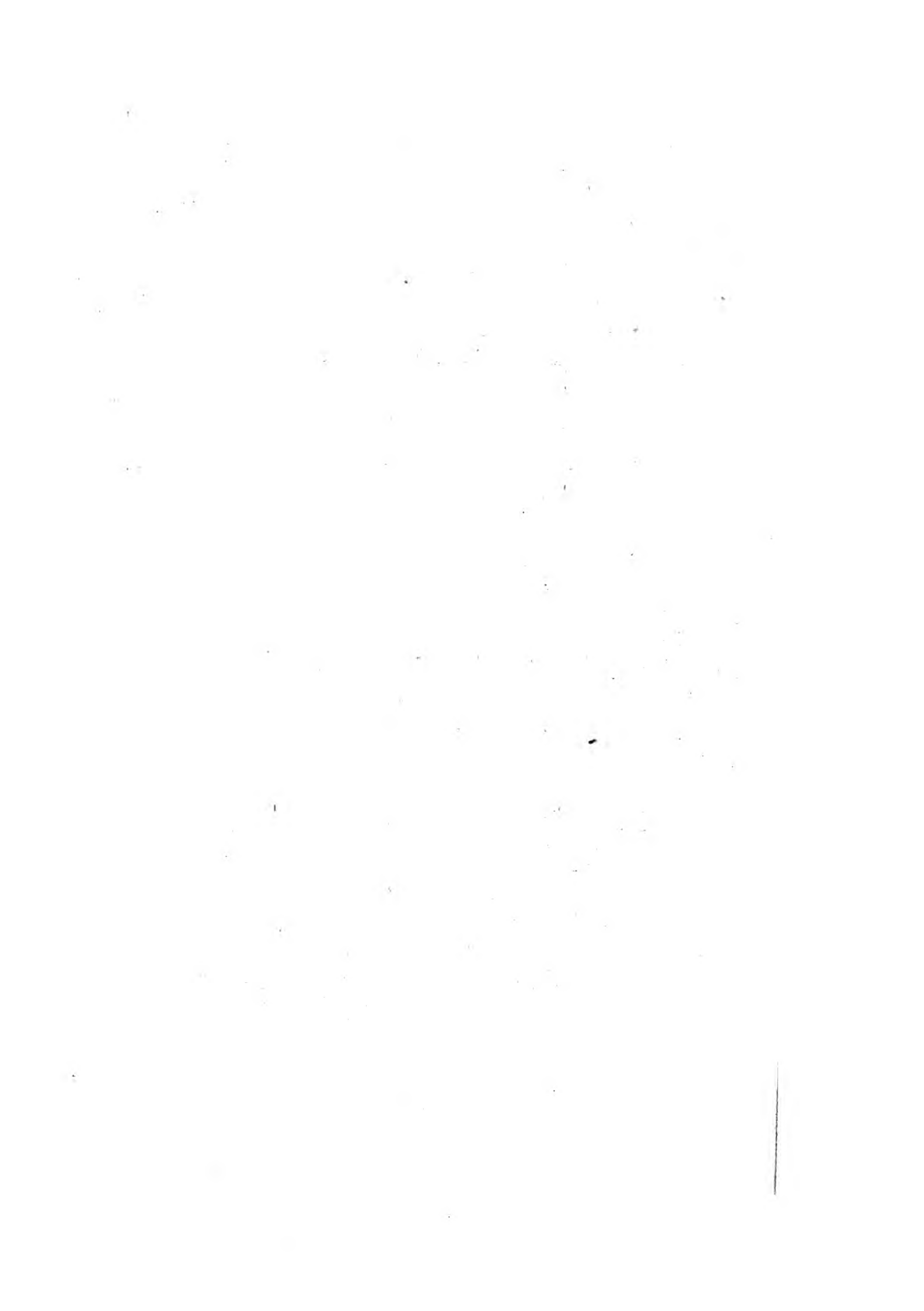
Scale, 40 Poles to an Inch



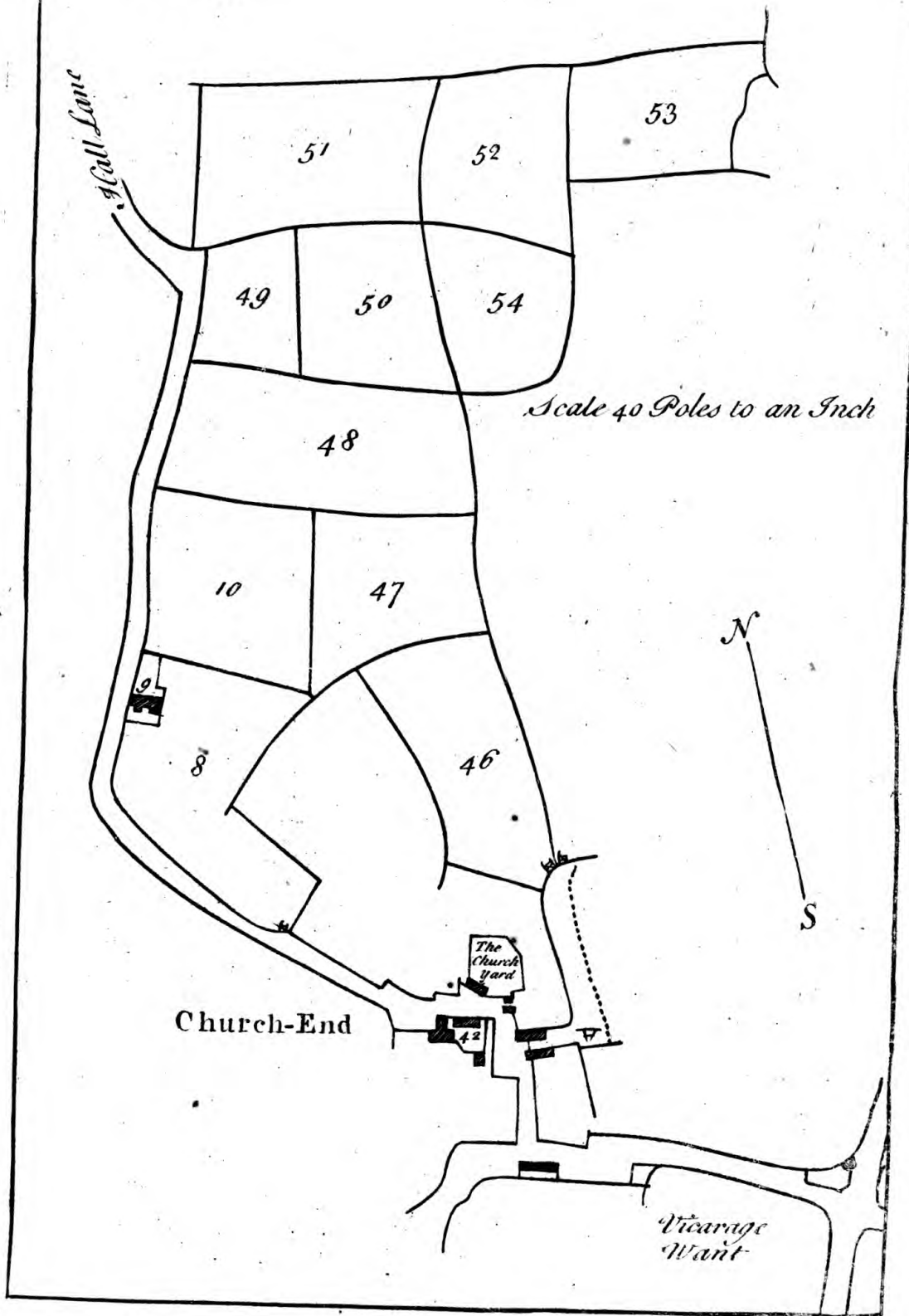
1850
1851
1852
1853
1854
1855
1856
1857
1858
1859
1860

1861
1862
1863
1864
1865
1866
1867
1868
1869
1870





LOT 9.



The First Day's Sale.

L O T 9.

Numbers referring to the Plan.	Names of the Lands.	Quality of the Lands	Quantity of the Land. Acr. Ro. Perc.	Yearly Value. £. s. d.
--------------------------------	---------------------	----------------------	---	---------------------------

John Cole and Daniel Kemp,
Tenants at Will,

John Cole,

42	The Farm at <i>Church End</i> , the House part Brick, and part Lath and Plaister, tiled, in good Repair, a Shed ad- joining with two good Barns, one of four bay, the other of seven boarded, and tiled, and a Yard.		0 1 16	
46	Nearer Sunny Hill	<i>Meadow</i>	8 0 35	
47	Middle Do.	<i>Meadow</i>	6 3 32	
48	Further Do.	<i>Meadow</i>	11 1 31	
49	Chamberlain Field	<i>Meadow</i>	3 3 35	
50	Nearer or first Newarks	<i>Meadow</i>	6 0 12	
51	Second Do.	{ <i>Arable.</i> and <i>Meadow</i> }	3 0 17 5 3 25	} 94 7 7
52	Third Do.	<i>Arable</i>	6 1 1	
53	Further Do.	<i>Arable</i>	5 1 2	
54	Little Downage Wood,	<i>Arable</i>	5 2 8	
Acres				80 3 11

Daniel Kemp,

8	Barn Field	<i>Meadow</i>	9 3 17
9	The Barn and Yard in Do 7 bay		0 1 12
10	The 8 Acres by Barn Field	<i>Meadow</i>	8 0 36

Of this Lot there are of	<i>Meadow</i>	60 2 23
	<i>Arable</i>	24 0 28
Together		80 3 11

To be put up at the Sum of £. 2300.

In the Hedge Rows of this Lot are 170 Trees of Oak. and 25
of Elm Timber, valued at £. 59.

The First Day's Sale.

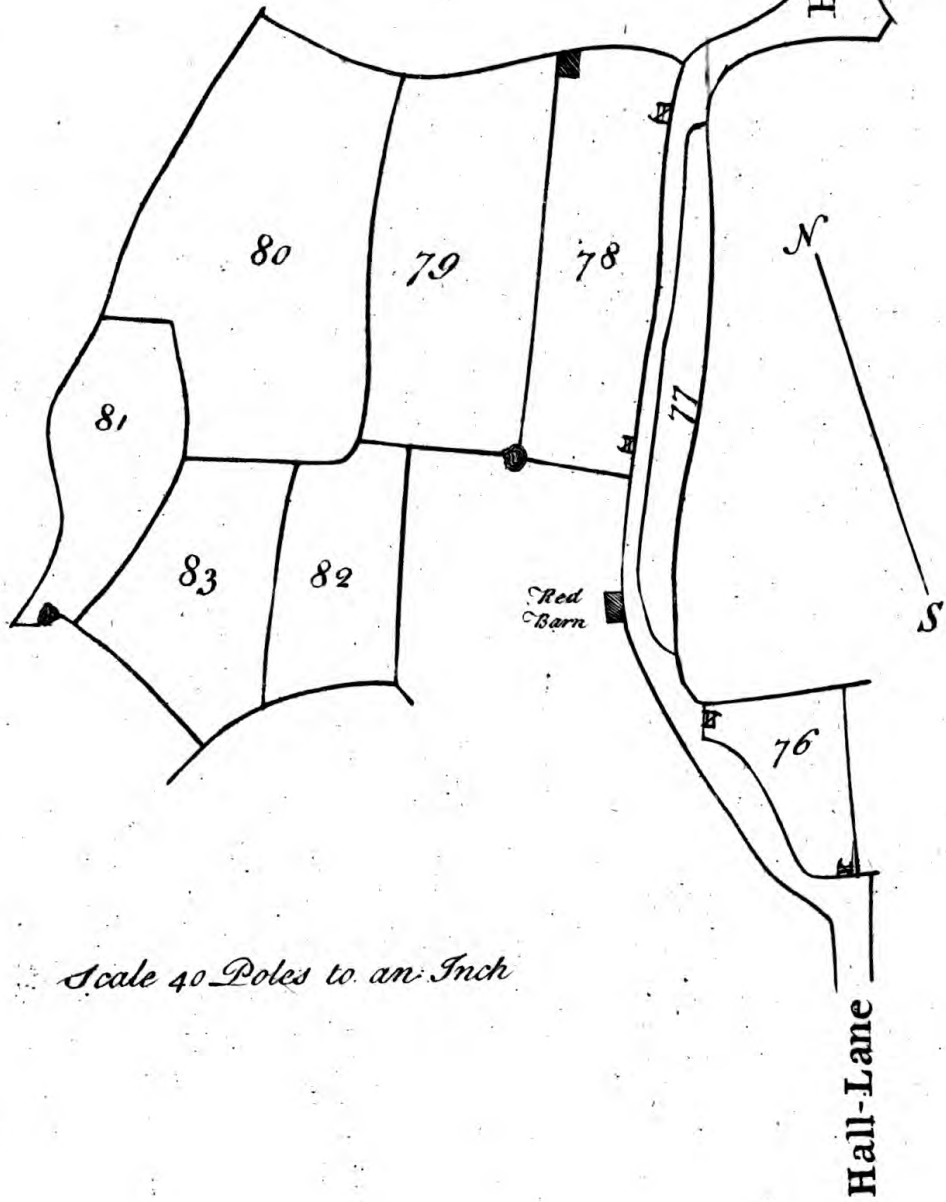
L O T 10.

Numbers referring to the Plan.	Names of the Lands.	Quality of the Lands.	Quantity of the Lands.			Yearly Rent.			
			Acr.	Ro.	Per.	£.	s.	d.	
<p><i>John Nicholl, of Page- street, Esq; Tenant on Lease for 7, 14 or 21 Years from Michaelmas 1743, To a Parcel of Land ad- joining to Hall Lane.</i></p>									
76	The Three Corner Mead	<i>Meadow</i>	3	1	6	}	63	18	0
77	The long Slip	<i>Meadow</i>	2	1	20				
78	St. Foin Field, formerly in three,	<i>Meadow</i>	8	2	11				
79	Lay Field formerly in two	<i>Meadow</i>	11	2	25				
80	Broad Mead	<i>Meadow</i>	16	2	4				
81	The four Acres	<i>Meadow</i>	4	2	14				
82	Nearer Lay Field	<i>Meadow</i>	6	1	13				
83	Further Lay Field	<i>Meadow</i>	7	0	13				
			Acres <u>60 1 26</u>						

To be put up at the Sum of £. 1550 0 0 .

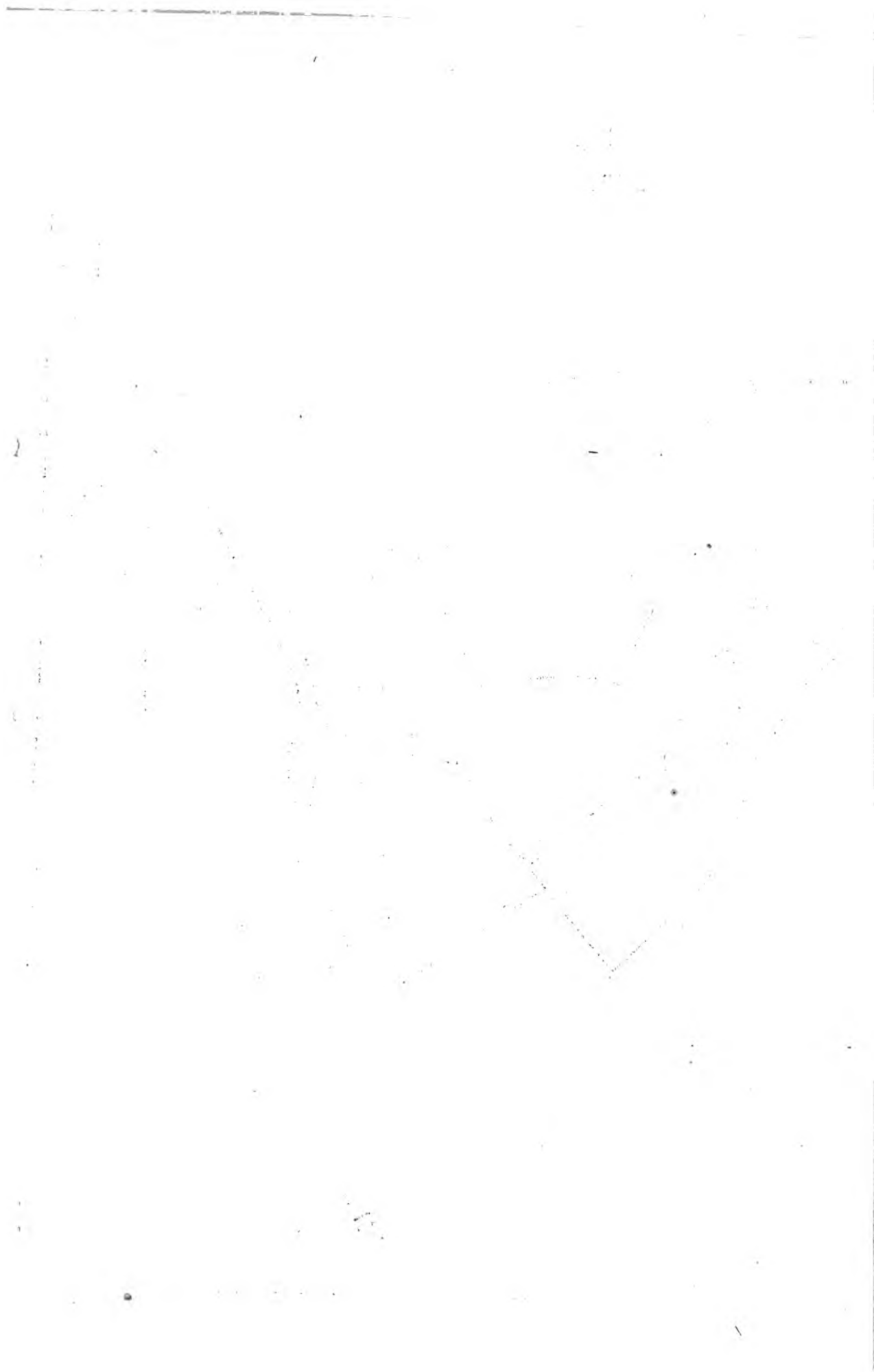
The Timber in the Hedge Rows of this Lot, consisting of 170 Oaks, and 38 Elms, is esteemed worth £. 60.

LOT.10.



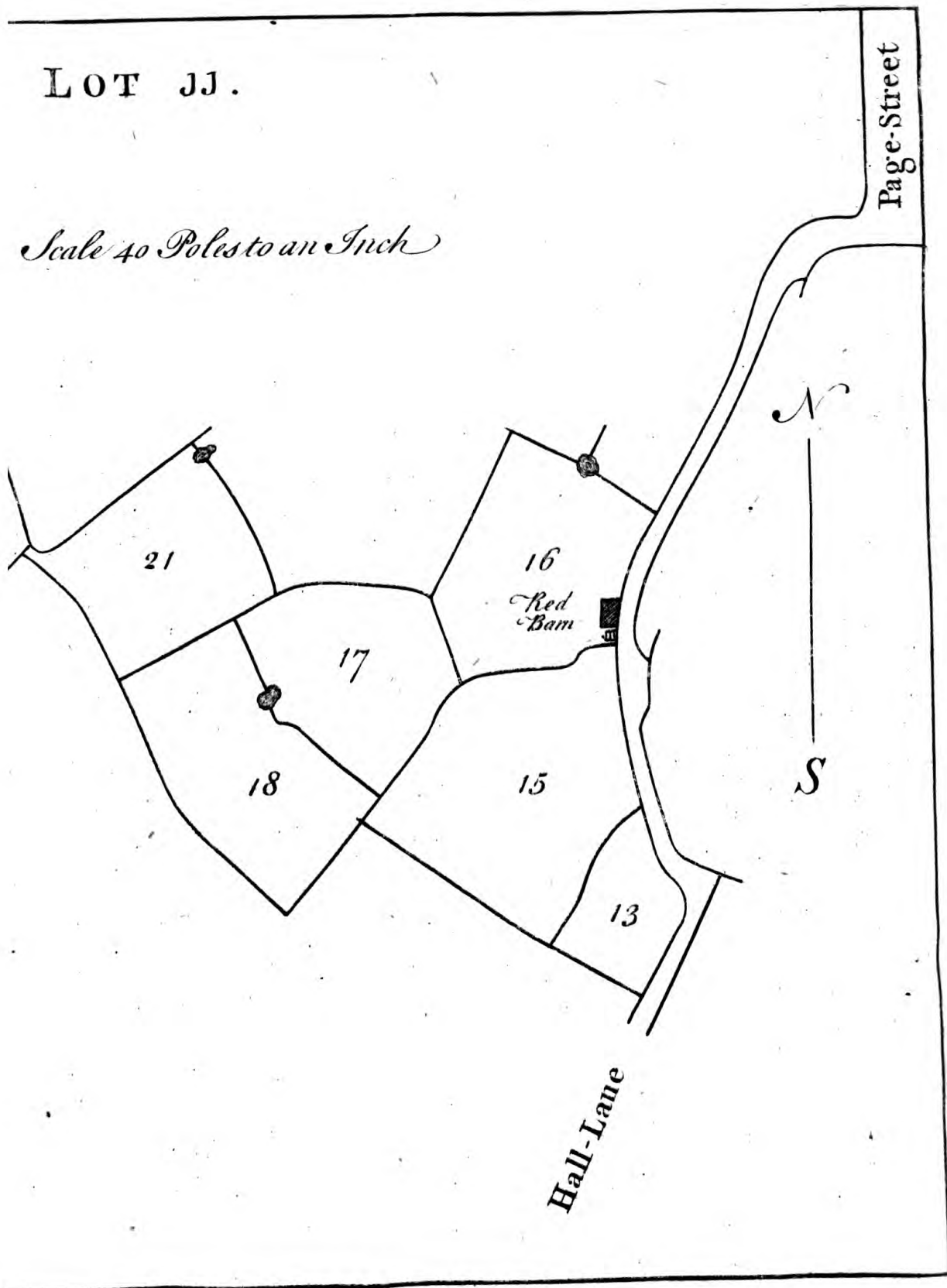
Scale 40 Poles to an Inch





LOT JJ.

Scale 40 Poles to an Inch



The First Day's Sale.

L O T II.

Numbers referring to the Plan.	Names of the Lands.	Quality of the Lands.	Quantity of the Lands. Acr. Ro. Per.	Yearly Value. £. s. d.
<i>Daniel Kemp</i> Tenant at Will,				
To a Parcel of Lands adjoining to <i>Hall Lane</i> , viz.				
13	Little Breach	Meadow	3 3 32	} 63 7 3
15	Great Breach	{ Meadow and Arable }	12 1 27 5 1 8	
16	Red Barn Field in which is a Barn five bay boarded and tiled in very good Repair	Meadow	10 3 37	
17	The 8 Acres by Red Barn Field	Meadow	8 1 23	
18	The Quakers 10 Acres	{ Meadow and Arable }	7 3 4 2 3 0	
21	Deer Acre	{ Meadow and Arable }	8 2 34 1 2 0	
			Acres 61 3 5	

	Acr.	Ro.	Perc
<i>Meadow</i> in this Lot	52	0	37
<i>Arable</i>	9	2	0

Together 61 3 5

To be put up at the Sum of £. 1700.

There are 65 Trees of Oak Timber in this Lot, valued at £. 19.

The SECOND DAY's Sale.

Wednesday, *October*, 20, 1756.

L O T 12.

Numbers referring to the Plan.	Names of the Lands.	Quality of the Lands.	Quantity of the Lands. Acr. Ro. Per.	Yearly Rent. £. s. d.
	<i>Thomas Nicholl</i> Tenant by Lease for 21 Years from 29 <i>December</i> 1742 at £ 150 per annum.			
	To a Farm at <i>Church-end</i> the House boarded and tiled ; a white Wall and tiled, with a Yard and Garden, a Cow- house, Stable, Cart-house, and two new Barns.			
29	The House, &c.		1 1 0	} 150 00 0
30	The Hall Fields in two parts	<i>Meadow</i>	4 0 27	
31	Upper Rushworths now in two parts	<i>Meadow</i>	12 0 30	
32	Lower Rushworths	<i>Meadow</i>	14 1 23	
33	Letheridge	<i>Meadow</i>	23 2 6	
34	Long Breach or nine Acres, in which is a new Barn	<i>Meadow</i>	9 2 4	
35	Nearer part of Upper Land- acres	<i>Meadow</i> and <i>Arable</i>	6 3 26 2 2 26	
36	Further part Do.	<i>Meadow</i>	14 0 32	
37	Nearer part of Lower Do.	<i>Meadow</i>	7 1 20	
38	Further part of Do.	<i>Meadow</i>	11 1 38	
39	Collin Deep Field	<i>Arable</i>	6 0 17	
	Acres		112 2 9	

	Acr. Ro. Perc.
Of this Lot there are of <i>Meadow</i>	103 3 6
<i>Arable</i>	8 3 3
	112 2 9

To be put up at the Sum of £. 3700.

The Timber of this Lot consisting of 196 Trees of Oak, and 27
of Elm, is esteemed worth £. 69. and the two new Barns cost 290^l.

The Second Day's Sale.

L O T 13.

Numbers referring to the Plan.	Names of the Lands.	Quality of the Lands.	Quantity of the Lands. Acr. Ro. Per.	Yearly Rent, £. s. d.
<i>John Twyford, Tenant by</i>				
<i>Leafe for 21 Years from</i>				
<i>Michaelmas 1741, to Land</i>				
<i>at Collin Deep.</i>				
84	Nearer Shoe Lands in which is a shed	}	<i>Meadow</i> 14 0 13	}
85	Further Shoe Lands		<i>Meadow</i> 13 1 17	
86	Collin Deep Field	{	<i>Meadow</i> 1 1 16	
			and <i>Arable</i> 7 1 37	
87	Collin Deep Mead	<i>Meadow</i> 4 2 12		
88	Woodfield	<i>Arable</i> 7 0 19		
89	Dockfield	<i>Meadow</i> 7 0 35	} 131 00 0	
90	Nearer Coppice Hill	<i>Arable</i> 8 0 16		
91	Further Coppice Hill	<i>Arable</i> 8 2 23		
92	10 Acre or long Coppice Hill.	<i>Arable</i> 10 1 5		
93	Hungerland Mead	<i>Meadow</i> 13 2 21		
94	Eight Acre Butcher's Lay	<i>Arable</i> 10 0 31		
95	Near six Acre Butcher's Lay	<i>Meadow</i> 7 2 6		
96	Further 6 Acre Butcher's Lay	<i>Meadow</i> 9 2 20		
97	The 3 Acre Butcher's Lay	<i>Meadow</i> 4 3 26		
			Acres 128 0 17	

	Acr.	Ro.	Perc.
Of this Lot there are of <i>Meadow</i>	76	0	36
<i>Arable</i>	51	3	21
128 0 17			

To be put up at the Sum of £. 3200.

The Second Day's Sale.

LOT 14.

Numbers referring to the Plan.	Names of the Lands.	Quality of the Lands.	Quantity of the Lands.			Yearly Value.			
			Acr.	Ro.	Per.	£.	s.	d.	
<i>Daniel Weedon</i> , Tenant by									
Lease for 21 Years from <i>Michaelmas</i> 1739,									
To a Parcel of Land near									
<i>Burrows</i> .									
98	Barn Field (in which is a Barn)	Meadow	6	2	8	}	49	18	0
99	The 5 Acre Silk Field	Meadow	6	0	6				
100	The 8 Acre Silk Field	Meadow	8	3	20				
101	The 14 Acre Silk Field	Meadow	16	0	37				
			Acres			37 2 31			

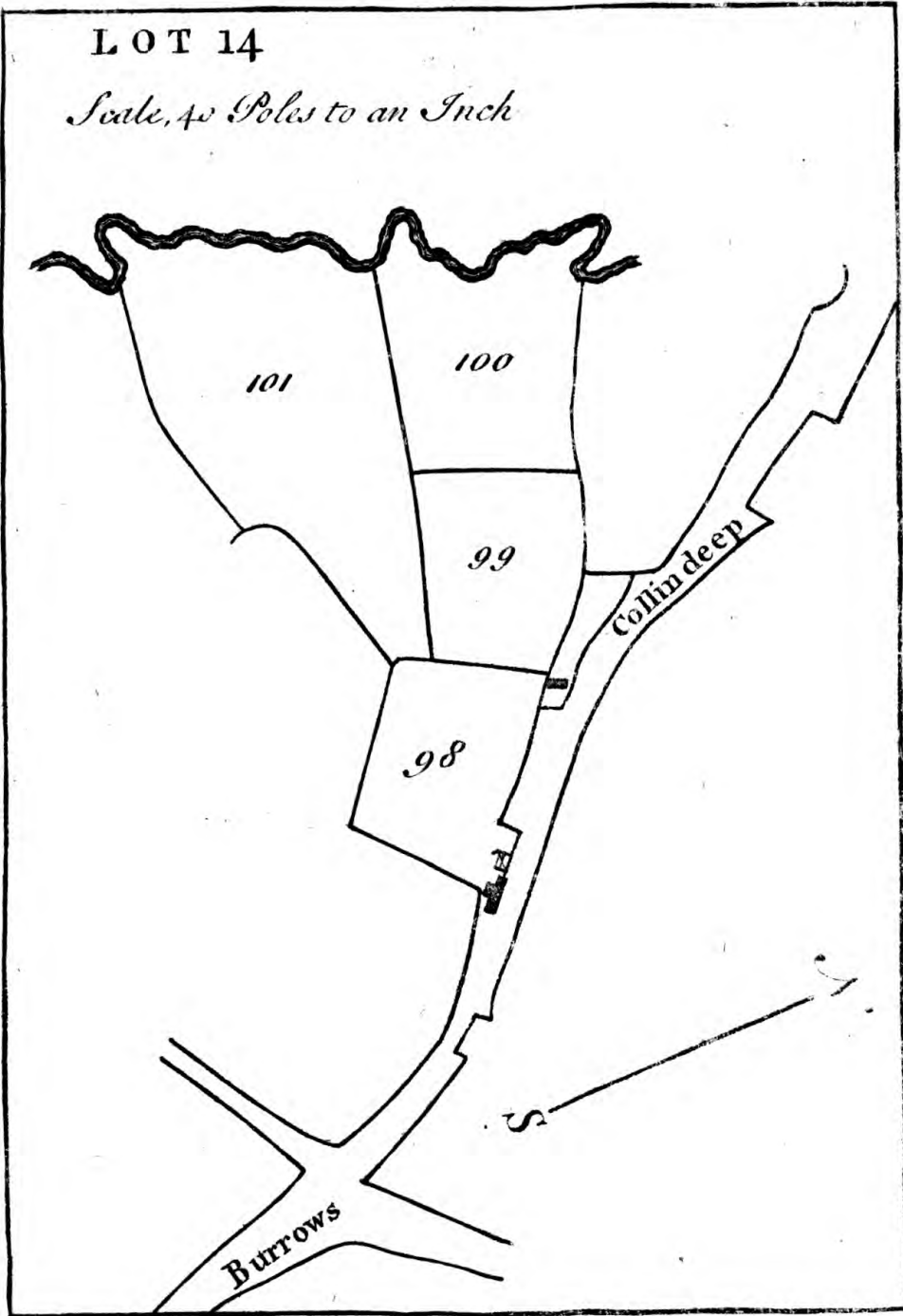
N. B. This Lot and Lot 15 are let together to Mr. *Weedon*, at £. 108 0 0, *per Ann.*

To be put up at the Sum of £. 1200.

There are in this Lot 143 Trees of Oak, and 15 of Elm Timber, valued at £. 50.

LOT 14

Scale, 40 Poles to an Inch

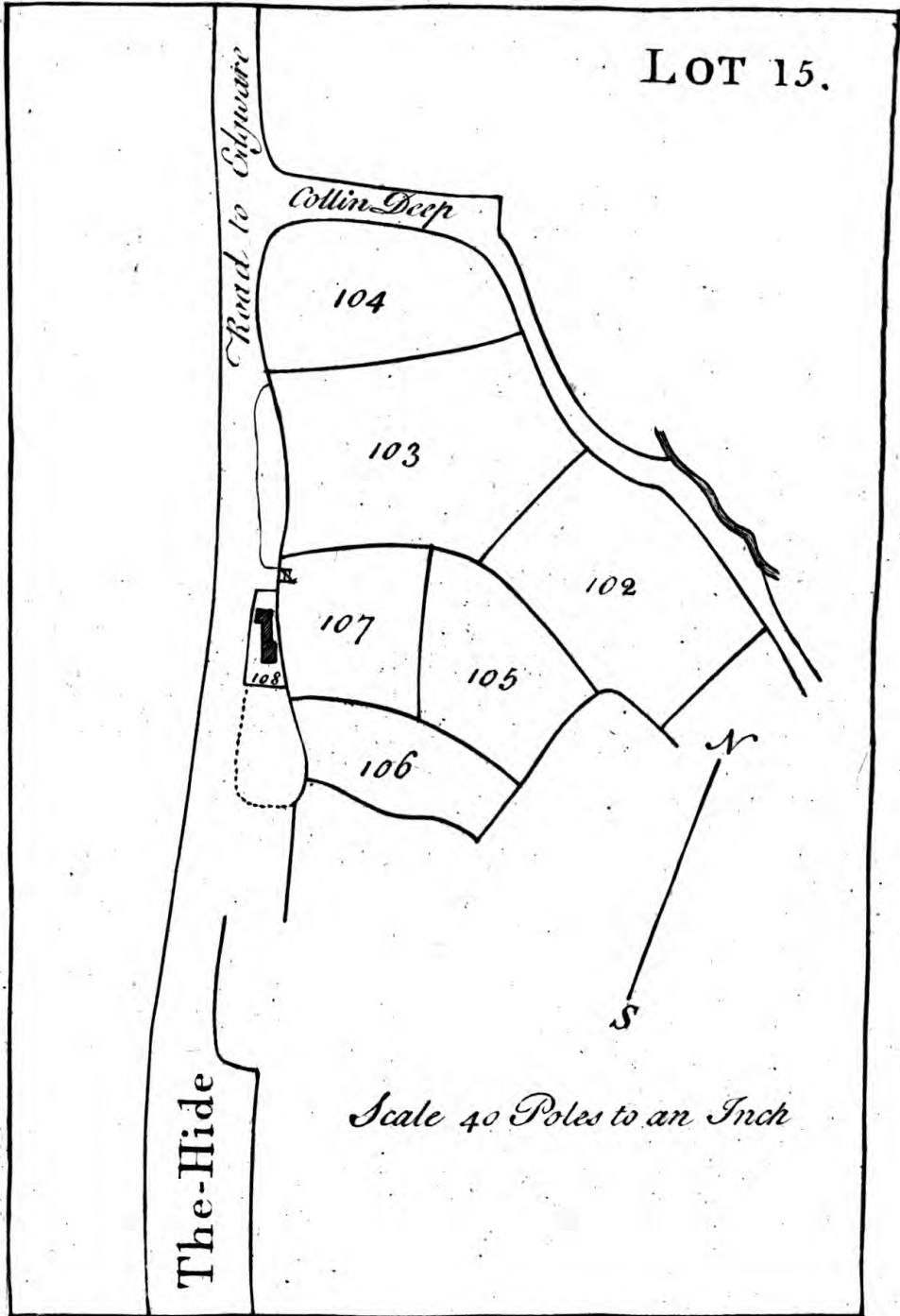


1872

1872



LOT 15.



Road to Edgware

Collin Deep

104

103

102

107

105

106

108

The-Hide

N

S

Scale 40 Poles to an Inch

The Second Day's Sale.

L O T 15.

Numbers referring to the Plan.	Names of the Lands.	Quality of the Lands.	Quantity of the Lands.		Yearly Value.		
			Ac.	Ro. Per.	£.	s.	d.
	<i>Daniel Weedon</i> , Tenant by Lease, for 21 Years from <i>Michaelmas</i> 1739, To a Farm near <i>Collin Deep</i> and <i>Edgware Road</i> , <i>viz.</i> To a House by <i>Edgware Road</i> , being the <i>George Alehouse</i> boarded and tiled, and two boarded and tiled Cottages adjoining, a three bay Barn, Stable, Cow-house and Cart-house, all in good Repair.						
102	The 9 Acres	Called Gate Fields by Edgware Road.	Meadow	9	2	35	} 61 17 7
103	The 12 Acres		Meadow	13	0	10	
104	The 7 Acres		Meadow	7	1	23	
105	The 5 Acres		Meadow	5	1	33	
106	The 3 Acres		Meadow	3	1	25	
107	The 4 Acres		Meadow	4	3	13	
108	The House and other Buildings before-mention'd			0	2	14	
			Acres		43	3	19

N. B. This Lot and the Lot foregoing are let to Mr. *Weedon*, at £. 108 0 0 per Ann. and the *George Alehouse* is now let by him at £. 5 per Ann. and the Two Cottages at £. 4 per Ann.

To be put up at the Sum of £. 1500.

The Timber in the Hedge-Rows of this Lot consisting of 125 Trees of Oak, and 15 of Elm is esteemed worth £. 43.

The Second Day's Sale.

L O T 16.

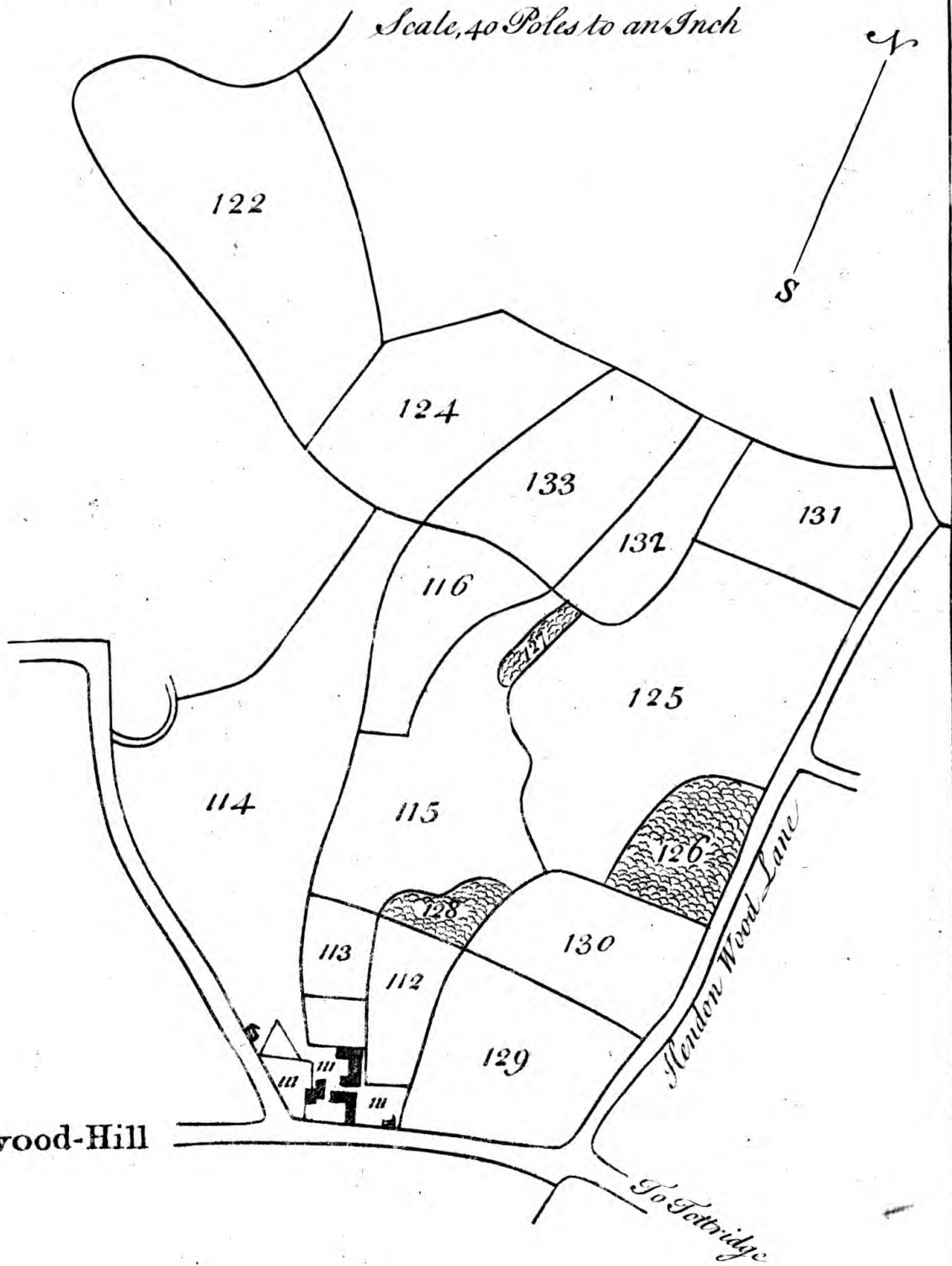
Numbers referring to the Plan.	Names of the Lands.	Quality of the Lands.	Quantity of the Lands. Acr. Ro. Per.	Yearly Value. £. s. d.
<i>Abel Browne and William Witball</i>				
Tenants, <i>Browne</i> at will, <i>Witball</i> on Lease, which expires in a Year, To Lands, &c. at <i>Highbwood Hill, viz.</i>				
<i>Abel Browne,</i>				
111	To a large well built Brick and Sashed House tiled, the Parlours wainscotted, and the whole genteelly fitted up, with a Farm-house, good Stables, Cow-house, a very large boarded and tiled Barn, several convenient Yards, and a good Garden pleasantly situated, and commanding a very extensive and beautiful Prospect; enriched with fine Woods and Plantations.		3 1 20	
112	Barn Field	<i>Meadow</i>	2 2 3	
113	Little Gravel Field	<i>Pasture</i>	1 3 20	
114	Gravel Pit Field, formerly in several	<i>Pasture</i>	18 0 30	
115	Great Gravel Field	<i>Arable</i>	12 0 21	
116	Little Field by Do.	<i>Pasture</i>	5 2 8	
122	The Plain	<i>Meadow</i>	17 3 22	
124	Upper Miles Pit Field	<i>Meadow</i>	9 3 30	} 118 14 0
125	Allen's Woodfield	<i>Arable</i>	20 2 36	
126	Allen's Wood	<i>Wood</i>	3 3 12	
127	Allen's Grove	<i>Wood</i>	0 1 23	
128	Little Grove by Barn Field	<i>Wood</i>	0 3 21	
<i>William Witball,</i>				
129	Great Salmon Slades	<i>Meadow</i>	8 2 1	
130	Little Salmon Slades	<i>Meadow</i>	6 1 2	
131	Dell Field	<i>Meadow</i>	6 1 26	
132	Honey Field	<i>Meadow</i>	4 0 16	
133	Pond Field	<i>Meadow</i>	7 1 18	

	Acr. Ro. Per.	Acres
In this Lot are <i>Meadow</i>	63 3 38	126 2 9
<i>Arable</i>	32 3 17	
<i>Pasture</i>	25 2 18	
<i>Wood</i>	5 0 16	
Together	126 2 9	

To be put up at the Sum of £. 3000.
There are 160 Trees of Oak Timber in this Lot, valued at £. 30.

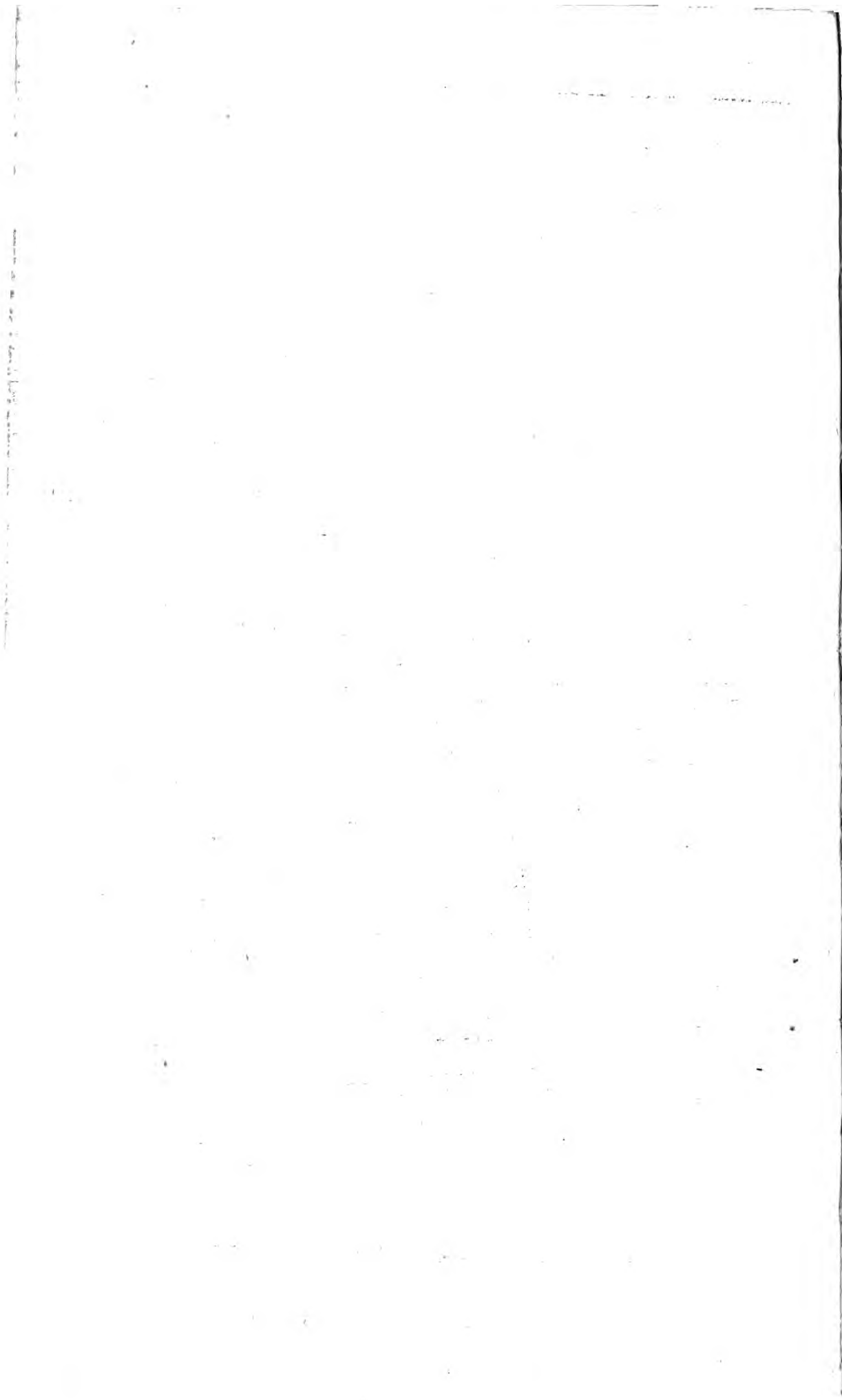
LOT. J6

Scale, 40 Poles to an Inch



Highwood-Hill

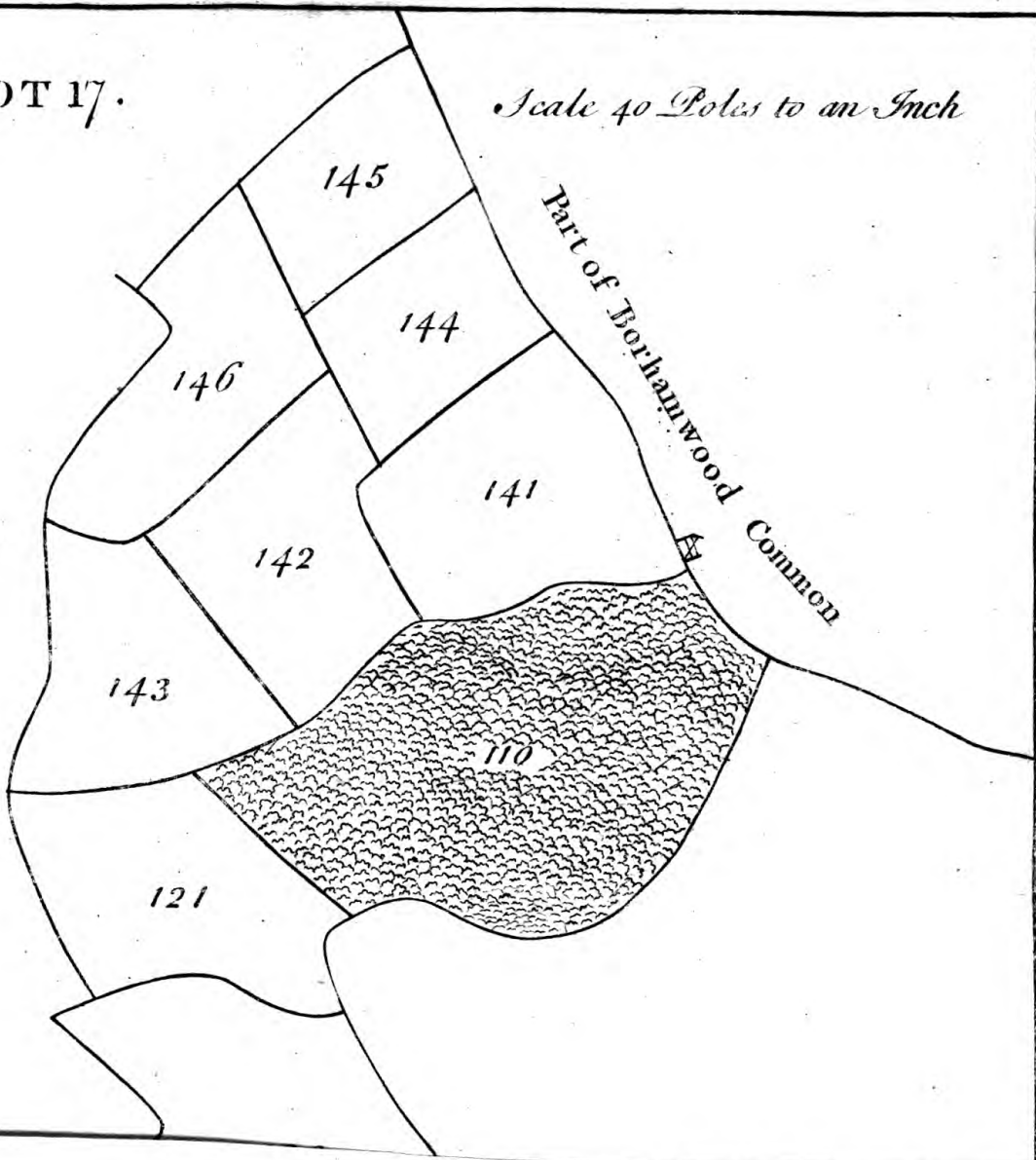
To Totbridge



to be put up at the Sum of £ 3000.
In the Hedge Rows of this Lot there are 146 Trees of Oak Timber,
computed to be worth £ 25.

LOT 17.

Scale 40 Poles to an Inch



The Second Day's Sale.

L O T 17.

Numbers referring to the Plan.	Names of the Land.	Quality of the Lands.	Quantity of the Lands.			Yearly Value		
			Ac.	Ro.	Per.	£.	s.	d.

Abel Browne, Edward Parsons, Henry Goldsmith, Tenants at Will,

To several Parcels of Lands pleasantly situated at *Highwood-Hill*, with a large beautiful and valuable Coppice Wood.

117	The <i>Moat Mount</i> , an elevated Piece of Ground, and a proper Place to build on, on account of the beautiful Prospect therefrom, and its lying upon the Road,	} <i>Meadow</i> } <i>Wood</i>	} 0	} 2	} 28			
118	<i>Abel Browne,</i> Mint Field, alias Holybush Field,	} <i>Meadow</i>	} 9	} 0	} 36			
119	The Six Acres,	} <i>Meadow</i>	} 8	} 1	} 26			
120	The Rough, with a Pond;	} <i>Meadow</i>	} 18	} 0	} 35			
121	Witching Hill,	} <i>Meadow</i>	} 10	} 1	} 34			
<i>Edward Parsons,</i>								
138	Little Cotheads,	} <i>Pasture</i>	} 3	} 0	} 22			
139	Great Cotheads,	} <i>Pasture</i>	} 8	} 3	} 22			
<i>Henry Goldsmith,</i>						} 120	} 4	} 0
141	Nearer Hyver's Hill Wood Close,	} <i>Pasture</i>	} 13	} 0	} 0			
142	Further Hyver's Hill Wood Close,	} <i>Pasture</i>	} 10	} 3	} 24			
143	Witching Hill, or further Wood Close, with a Pond,	} <i>Pasture</i>	} 9	} 3	} 34			
144	The 7 Acres by Barham Wood	} <i>Meadow</i>	} 7	} 1	} 23			
145	The 6 Acres by Do.	} <i>Meadow</i>	} 6	} 3	} 18			
146	The 10 Acres by Bay's Hill Wood,	} <i>Meadow</i>	} 10	} 0	} 7			
<i>In Hand.</i>								
110	Hyver's Hill Wood,	} <i>Wood</i>	} 26	} 2	} 32			

	Acres	144	3	30
	Ac.	Ro.	Per.	
<i>Meadow</i> in this Lot	71	1	6	
<i>Pasture</i> ———	45	3	32	
<i>Wood</i> ———	27	2	32	

Together 144 3 30

To be put up at the Sum of £ 3000.
In the Hedge Rows of this Lot there are 146 Trees of Oak Timber, computed to be worth £ 25.

The Second Day's Sale.

L O T. 18.

Numbers referring to the Plan.	Names of the Lands.	Quality of the Lands.	Quantity of the Lands. Acr. Ro. Per	Yearly Value £. s. d.
	<p style="text-align: center;"><i>Nathaniel Carter, Abel Browne, and the Widow Nicoll, Tenants, Carter by Lease for 21 Years from 1741, the others at Will,</i></p> <p style="text-align: center;">To several Parcels of Land by <i>Highbwood Hill</i>, with a valuable and beautiful Wood, viz.</p>			
	<i>Nathaniel Carter,</i>			
134	The Field adjoining to Hendon Wood Lane	} Meadow	7 3 29	} 64 3 0
135	Six Acres adjoining to Mile's Pit Field		6 3 20	
136	The 7 Acres —	Meadow	8 0 13	
137	Carter's Close —	Meadow	5 2 13	
	<i>Abel Browne,</i>			
123	Lower Miles Pit Field Late the Widow Nicoll, now	Meadow	9 1 30	
	<i>Thomas Cook,</i>			
140	Grimsgate Close, adjoining to Grimsgate, alias Barnet Common Gate,	} Pasture	9 3 8	
	<i>In Hand,</i>			
109	Grimsgate Wood,	Wood	24 3 37	
			Acres 72 2 29	

	Acr.	Ro.	Per.
<i>Meadow</i> in this Lot	37	3	24
<i>Pasture</i>	9	3	8
<i>Wood</i>	24	3	27

Together 72 2 29

To be put up at the Sum of £. 1600.

The Timber in the Hedge Rows of this Lot consists of 150 Trees of Oak, reckoned worth £. 20.

LOT 18.

*Part of Barnet
Common*

Grims Gate

*Part of Borhamwood
Common*

140

137

109

136

135

134

123

Scale 40 Poles to an Inch

N

S

Hendon Wood Lane

