



Bodleian Libraries

UNIVERSITY OF OXFORD

This book is part of the collection held by the Bodleian Libraries and scanned by Google, Inc. for the Google Books Library Project.

For more information see:

<http://www.bodleian.ox.ac.uk/dbooks>



This work is licensed under a Creative Commons Attribution-NonCommercial-ShareAlike 2.0 UK: England & Wales (CC BY-NC-SA 2.0) licence.



RESERVE
908.2
St



FORTE NOMEN FORTIVS OMEN

STANMORE-MIDDX

THE HILL-HOUSE

CHARLES DRVRY EDWARD FORTNUM
IP. DL. & ALD. CO MIDDX. HON DCL. &
FELL. QVEEN'S COLL. OXON. FSA
A TRVSTEE BRITISH MVSEVM: 1893





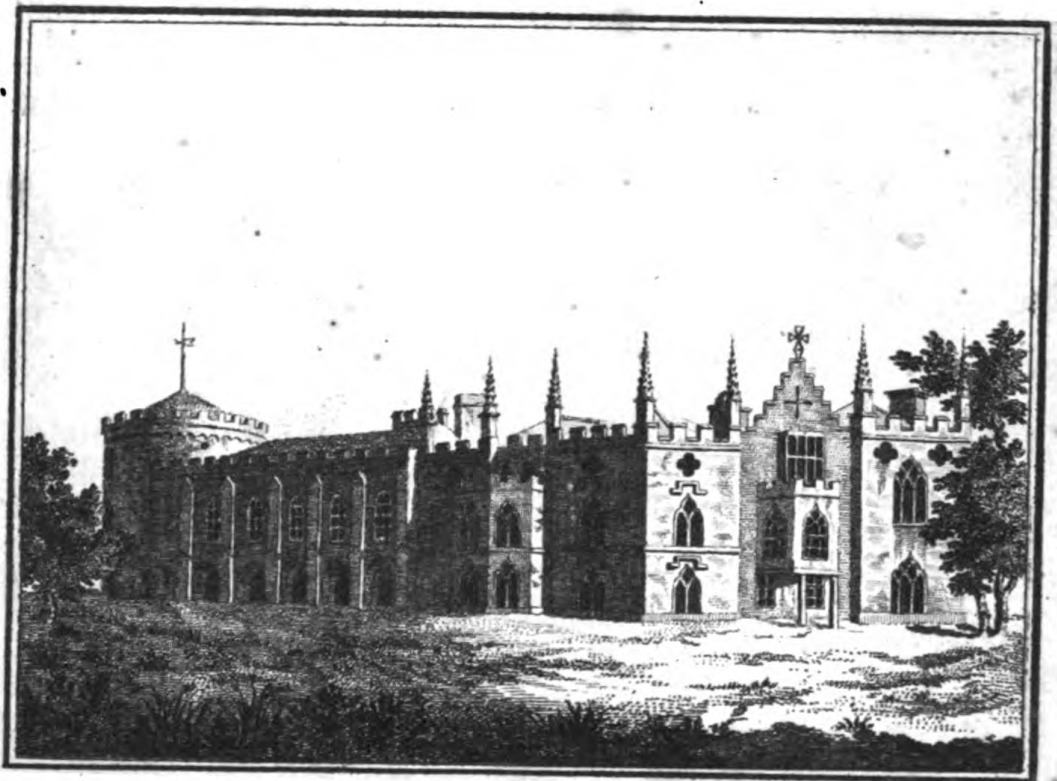
RESERVE

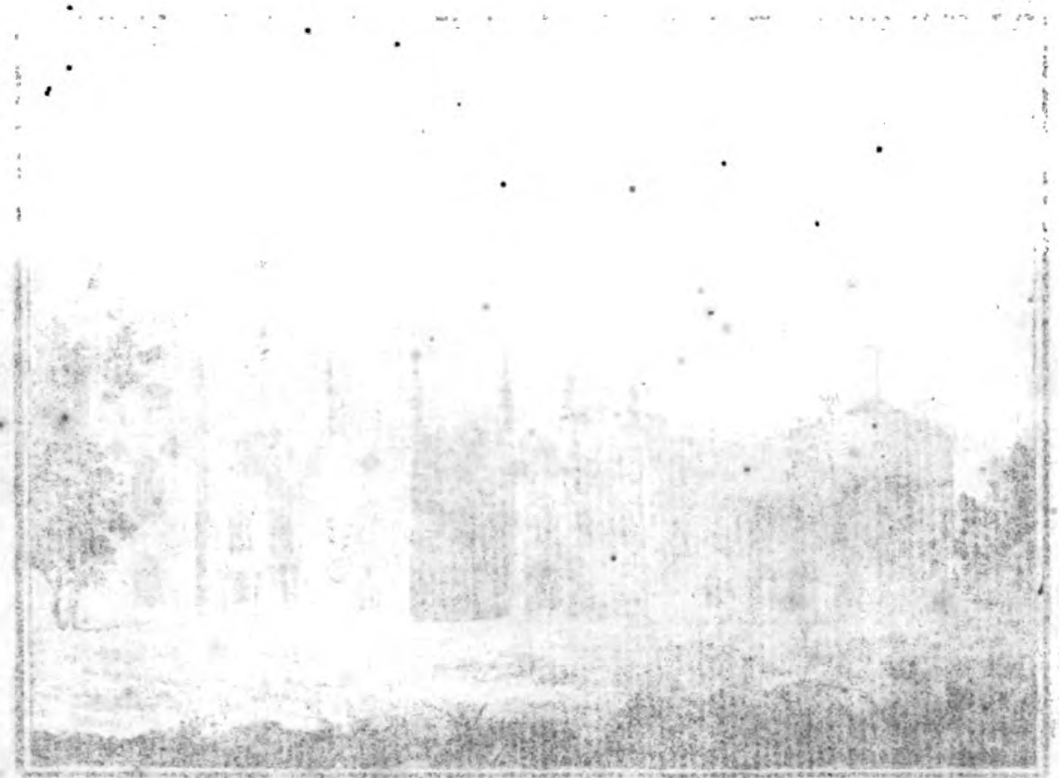
908.2

Str

N13114275

A
DESCRIPTION
OF THE
VILLA
OF
HORACE WALPOLE.





A
DESCRIPTION
OF THE
VILLA
OF

HORACE WALPOLE,

Youngest Son of Sir ROBERT WALPOLE Earl of ORFORD,

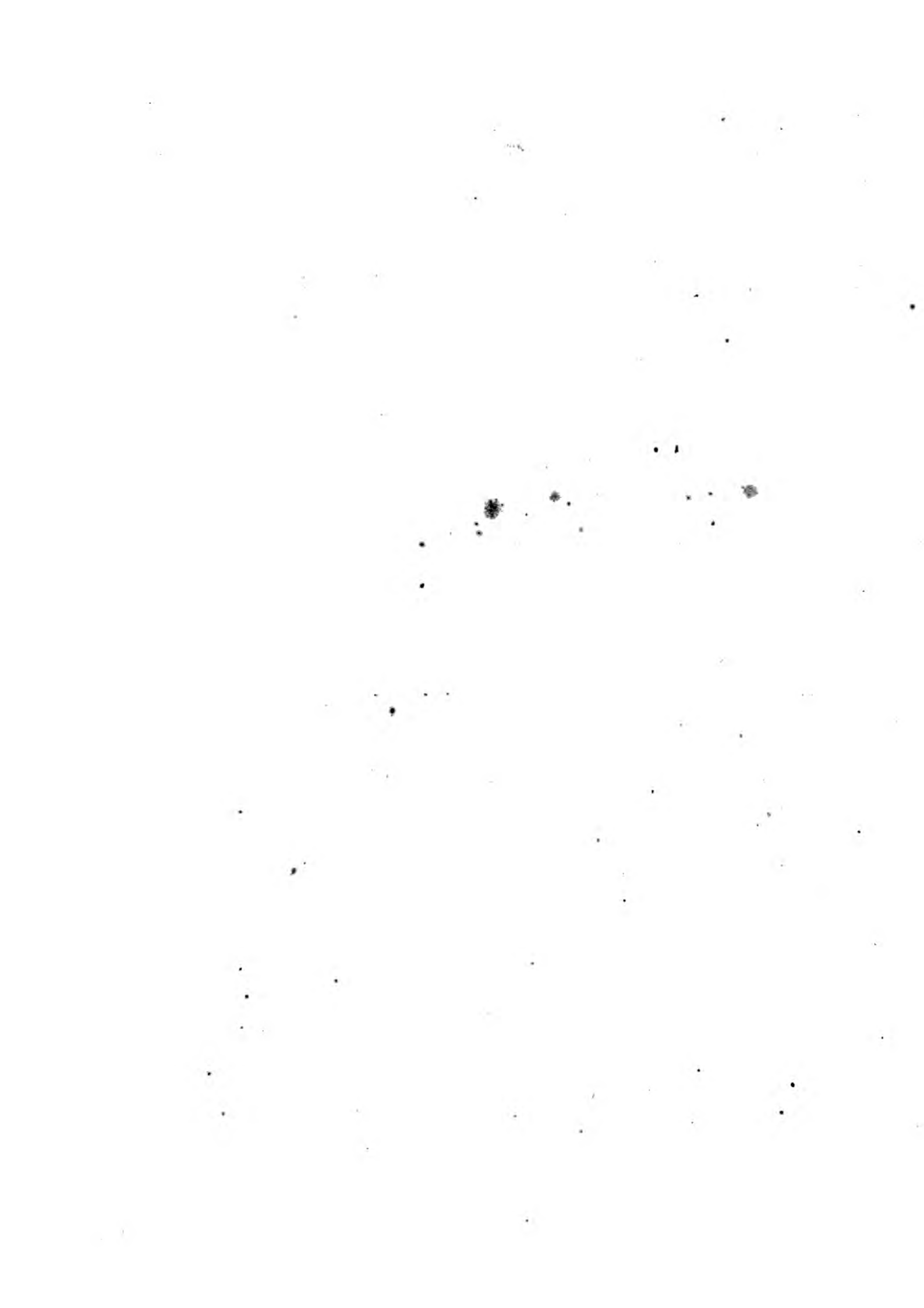
AT

Strawberry-Hill, near Twickenham.

With an INVENTORY of the
FURNITURE, PICTURES, CURIOSITIES, &c.

STRAWBERRY-HILL:
PRINTED BY THOMAS KIRGATE, M.DCC.LXXIV.





A
D E S C R I P T I O N
O F T H E
V I L L A
O F

Mr. HORACE WALPOLE,

At Strawberry-Hill, near Twickenham.

WHERE the Gothic Castle now stands, was originally a small tenement,* built in 1698, and let as a lodging-house: Cibber once took it, and wrote one of his plays here, *The Refusal, or the Lady's Philosophy*. After him, Talbot bishop of Durham had it for eight years: † then, Henry Bridges marquis of Carnarvon, son of James
B. duke

* It was built by the earl of Bradford's coachman, and was called by the common people, *Chopped-straw-hall*, they supposing, that by feeding his lord's horses with chopped straw, he had saved money enough to build his house: but the piece of ground on which it stands is called in all the old leases, *Strawberry-hill-shot*, from whence it takes its name.

† The bishop kept a large table here, which is scarce conceivable, as he had no kitchen but that little place which is now the china-room.

duke of Chandos, and since duke himself. It was next hired by Mrs. Chenevix,* the noted toy-woman, who, on the death of her husband, let it to lord John Philip Sackville, second son of Lionel duke of Dorset: he kept it about two years, and then Mr. Walpole took the remainder of Mrs. Chenevix's lease in May 1747, and the next year bought it by act of parliament, it being the property of three minors of the name of Mortimer. Along with this house and some other tenements was another small one,† then occupied by Richard Francklin, printer of the Craftsman, who had been taken up for printing that paper during the administration of sir Robert Walpole. ‡ When Mr. Walpole bought Strawberry-hill, there were but five acres belonging to the house: the rest have been purchased since. The Castle now existing was not entirely built from the ground, but formed at different times, by alterations of and additions to the old small house. The library, and refectory or great parlour, were entirely new built in 1753; the gallery, round tower, great cloyster,

* Pere Courayer lodged here with her for some time.

† It has since been pulled down, and a cottage built on the same spot. The garden too has been newly laid out by Mr. Walpole, since it came into his hands by Francklin's death.

‡ It is remarkable, that the printer of the Craftsman was Mr. Walpole's tenant; and that the writer of the Craftsman, W. Pultney, earl of Bath, wrote a ballad in praise of Strawberry-hill.

STRAWBERRY-HILL.

3

cloyster, and cabinet, in 1760 and 1761; and the great north bedchamber in 1770.

The embattled wall to the road is taken from a print of *Aston-house* in *Warwickshire*, in *Dugdale's* history of that county.

Entering by the great north gate, the first object that presents itself is a small oratory inclosed with iron rails; in front, an altar, on which stands a faint in bronze; open niches, and stone basons for holy water; designed by *John Chute, esq;* of the *Vine* in *Hampshire*. On the right hand, is a small garden called the abbot's garden, parted off by an open screen, taken from the tomb of *Roger Niger* bishop of *London*, in old *St. Paul's*. Passing on the left, by a small cloyster,* is the entrance to the house, the narrow front of which was designed by *Richard Bentley*, only son of *Dr. Bentley*, the learned master of *Trinity-college*, *Cambridge*. Over the door are three shields of *Walpole*, *Shorter*, and *Robfart*.

You

* In this cloyster are three blue and white delft flower-pots; and a bas-relief head in marble, inscribed *Dia Helianora*; it is the portrait of the princess *Eleonora d'Este*, with whom *Taffo* was in love, and who was the cause of his misfortunes. It was sent to *Mr. Walpole* from *Italy* by *fir W. Hamilton*, minister at *Naples*.

In the winding cloysters on the right hand are some ancient bas-reliefs; and a brass plate with the effigies of *Simon Walpole*, bishop of *Norwich* and *Ely*, engraven by *Muntz*.

You first enter a small gloomy hall, paved with hexagon tiles, and lighted by two narrow windows of painted glass, representing faint John and faint Francis. This hall is united with the staircase, and both are hung with a gothic paper, painted by one Tudor, from the screen of prince Arthur's tomb in the cathedral of Worcester. The ballustrade was designed by Mr. Bentley; at every corner is an antelope [one of lord Orford's supporters] holding a shield. In the well of the staircase, by a cord of black and yellow, hangs a gothic lanthorn of tin japanned, designed by Mr. Bentley, and filled with painted glass; the door of it has an old pane with the arms of Vere, earl of Oxford.

Turning to the left, through a small passage, on one side of which is a window entirely of painted glass, you enter

THE REFECTORY, OR GREAT PARLOUR.

IT is thirty feet long, twenty wide, and twelve high; hung with paper in imitation of stucco. The chimney-piece was designed by Mr. Bentley: upon it stands a fine Etruscan vase, between two bottles of black and gold porcelaine.

Over the chimney, a conversation, by Reynolds, small life: Richard, second lord Edgcumbe, is drawing at a table in the library at Strawberry-hill; George James Williams is looking over him; George Augustus Selwyn stands on the other side, with a book in his hand.

On

On one side of this picture, a head of sir Horace Mann, resident at Florence; painted there by Attley, and highly coloured: he is dressed in red velvet.

Opposite to it, his brother Galfridus Mann, in brown; by the same.

Over against the chimney, a bureau of black japan; on it, a clock, supported by a bronze figure of a woman reading: beneath, an Etruscan vase, between two white old china beakers.

The chairs are black, of a gothic pattern, designed by Mr. Bentley and Mr. Walpole. The table of Sicilian jasper, on a black frame designed by Mr. Bentley: upon it, a large punch-bowl and pail of Seve china; two beakers of old grey porcelaine, veined; two ice-pails of Chelsea china; three silver owls, as ancient castors; and a silver filligree bread-basket. Under it, two Etruscan vases, and a jar of Roman fayence. Over the table hangs a hunting-horn, finely enamelled on one side in colours, on the other in chiaro scuro, with the history of saint Hubert.

On each side of the window, the top of which has some fine painted glass, and one ridiculous Dutch piece representing the triumph of Fame, who is accompanied by Cato, Cicero, and other great men in square caps and gowns of masters of arts, are card-tables of rose-wood, carved in China; and over each, a looking-glass in a gothic frame of black and

gold, designed by Mr. Walpole. Inclosed in the tops of the frames, with their arms and coronets, are the portraits of George Walpole third earl of Orford, and of George Cholmondeley viscount Malpas, eldest son of George earl of Cholmondely and of Mary second daughter of sir Robert Walpole. The former is copied by Eckardt, from a miniature by Liotard, in the cabinet above stairs: the latter is original by Eckardt.

At the end of the room, over against the window, sir Robert Walpole, knight of the garter, afterwards earl of Orford. On one side of him,

Catherine, eldest daughter of John Shorter, of Bybrook in Kent, first wife of sir Robert Walpole; in white: a copy from sir Godfrey Kneller, by Jarvis. On the other side,

Maria Skerret, (in the dress of a shepherdes) second wife of sir Robert; by Jarvis.

On one side of the chimney, Robert Walpole second earl of Orford, auditor of the exchequer, master of the foxhounds, and knight of the bath, eldest son of sir Robert Walpole, by his first wife; in red velvet, with a globe by him: by Richardson.

Margaret, only child of Samuel Rolle of Heynton in Devonshire, first married to Robert second earl of Orford, and mother of George the third earl, and secondly to Sewallis Shirley, a younger son of earl Ferrers; in a white riding-habit with a stick: by Jarvis.

On

On the other side, fir Edward Walpole, second son of fir Robert Walpole and Catherine Shorter, knight of the bath and clerk of the pells; in the robes of the bath: by Slaughter.

Horace Walpole, third son of fir Robert and Catherine Shorter; in blue velvet: by Richardson.

Over against the chimney, a large piece of still life, by Adrian Van Utrecht. On one side of it,

Lady Anne Osborn, daughter of the first duke of Leeds; by fir Godfrey Kneller. She was first married to Thomas Coke of Holkam, by whom she was grandmother of Thomas Coke lord Lovel and earl of Leicefer; and secondly to Horatio Walpole, second son of fir Edward Walpole, and uncle of fir Robert Walpole. On the other side,

Dorothy, sister of fir Robert, and second wife of Charles lord viscount Townshend, knight of the garter and secretary of state; in a Turkish habit: by Jarvis.

Over one of the doors, Mary lady Malpas, second daughter of fir Robert Walpole and Catherine Shorter; married to George lord Malpas, afterwards earl of Cholmondeley: by Eckardt, after Jarvis. Over the other door,

Lady Maria Walpole, only child of fir Robert Walpole and Maria Skerret, and wife of Charles Churchill, only son of general Churchill; in a veil, with a music-book before her: by Eckardt.

A fire

§ A DESCRIPTION OF

A fire-screen of admirable needle-work, representing a vase of flowers, by lady Caroline Campbell, daughter of John duke of Argyll, countess of Ailesbury; married secondly to general Henry Seymour Conway, only brother of Francis first earl of Hertford of that line, knight of the garter, embassador in France, and lord chamberlain: it is mounted in mahogany, carved and inlaid with ivory.

A Turkey carpet, and a fire-screen embroidered with knotting.

IN THE WAITING-ROOM;

A Head in artificial stone of John Dryden the poet, great uncle of Catherine Shorter, lady Walpole: a large altar candlestick of metal, inlaid with gothic inscriptions, very ancient: and a pair of ancient bellows.

THE CHINA-ROOM.

PAINTED glass in the windows, and crests of Shorter and Gestinhorpe: the cieling painted with convolvulus's on poles, by Müntz, from a cieling in the little Borgheze villa at Frescati: the sides, white Dutch tyles, with borders of blue and white.

In the floor some very ancient tyles with arms, from the cathedral at Gloucester. The upper part of the chimney-piece

piece is taken from a window of an ancient farm-house, formerly Bradfield-hall, belonging to lord Grimston in Essex; the lower part from a chimney at Hurst Monceaux in Suffex: it is adorned with the arms of Talbot, Bridges, Sackville, and Walpole, the principal persons who have inhabited Strawberry-hill.

In a niche, supported by two columns of oriental alabaster, over the chimney, is a fine ewer of fayence, designed by Julio Romano; and two green glafs tumblers, with golden edges; and two round saltcellars of old blue and gold Venetian glafs, with flowers.

Over the niche, four chocolate-cups of fayence, by Pietro Cortona; and a bronze medallion of Pandulfo Malatesta.

On the the sides, George 2d. and Frederic prince of Wales, in Battersea enamel.

In the chimney, a large jar of old blue and white china; and two tyles from Bysham-abbey.

On the shelves and floor is a collection of porcelaine, earthenware, glafs, and enamel on copper, of various ages and countries, as follow:

Two dozen plates of Venetian glafs; each plate has a different view of Venice, drawn in red.

A japaned tray with a vase for cream, and eight chocolate-cups and saucers with landscapes in brown, of the same ware.

Two bowls of Worcester porcelaine, the pattern from old china.

Two mustard-pots and plates, of Seve china; given by lord Hertford.

Five trays, in shapes of fans, of old Japan china.

An old blue and white plate with a rib in the middle.

A coloured handle cup, saucer and square plate, à la Grecque, of Seve china.

Two old blue and white plates, artichoak pattern.

Thirteen ditto, with peacock feathers.

Sixteen coloured old Japan plates.

Four ditto, blue and white, with figures.

Three ditto, with figures.

Twelve ditto, of coloured Japan china.

Four ditto, with birds.

Four water-plates with figures, of new china.

Twelve plates of Chelsea china, with small coloured birds.

Three dishes scolopped and ribbed, with coloured flowers.

Two large coloured dishes of the fine old thick Japan china.

A large deep dish of Roman earth, with stories from Ovid's Metamorphosis.

An earthen-ware dish, with the heads of Charles 2d. and queen Catherine in blue and white; a present from Mr. Ibbot.

An old blue and white dish, with landscapes.

Ditto,

Ditto, larger, with figures.

Two dishes of very old French earthen-ware, with the arms of France.

Two small dishes of fayence, with grotesques and the arms of a bishop Contarini.

An octagon coloured plate of Saxon china, old pattern.

Ditto square, with a cock and hen.

A dish and twelve plates enamelled on copper.

Two round plates of Japan.

Thirteen old white chocolate-cups and tea-cups, with embossed flowers.

A tea-pot, milk-pot, five coffee-cups, five tea-cups, and ten saucers, of white quilted china of St. Cloud.

A tea-pot and milk-pot, six cups and saucers, of modern china, with grey landscapes.

Five white cups and saucers with gold borders.

Two coloured caudle-cups.

An earthen-ware tea-pot, with the head of lord Chatham.

A small tea-canister of Seve china, blue and gold, with figures on white.

A pot pourri of Saxon china, with coloured flowers embossed.

An old white china cup, with cupids painted in Europe.

A cup with a bullfinch, of modern china.

Thirteen small baskets of Saxon china for sugar-plumbs, different patterns.

An urn and stand of kennel coal, a present from fir William Meredith.

Six coloured water-cups and plates of Chelsea china.

A blue and white caudle-cup.

Two ditto, coloured.

An old blue and white honeycomb tea-pot.

Two Roman glass bottles, and two earthen lacrymatories. M.

An ewer enamelled with bacchanals on copper.

Two coffee-cups and saucers of white and gold Bohemian glass.

A cup of Mr. Place's china. *Vide Walpole's Catalogue of English Engravers.*

A blue and white saucer with a landscape, of fine Nankin china.

A jar, with red and white landscapes and blue and gold borders, of Chelsea china.

Two coloured Saxon trays with squirrels.

A scalloped saucer of Saxon china, the second sort, very rare: in it lies a medal of Louis quinze in Seve china.

A hand candlestick of coloured Seve china.

A blue and gold sugar-dish of old Venetian glass, cover, and plate, with a silver gilt spoon.

An old blue and white saucer in the shape of a star.

Two trays, ditto.

An ivory drinking-horn, with the arms of the earls of Exeter; ancient.

An old earthen mug of Arabian ware.

Two vases with handles, of red Portuguese earth.

Two plates like shaving-basons, of the same.

An earthen bottle; painted on it, *Sack*, 1647: it was thus sold by apothecaries. From the collection of Mrs. Kennon, the virtuosa midwife.

A blue and white eggshell cup.

Michael Angelo's Bacchus, made in the china of the comte de Lauragais, from the collection of the comte de Caylus.

Two Roman glasses, like water-glasses; and two lacrymatories, ditto. M.

Bust of Voltaire, in biscuit of Nancy.

Two blue and gold cups for eggs, of Seve china.

Seven old coloured octagon cups and saucers.

A tea-pot and bason, six handle cups and saucers, with battles in black, of Vienna china; a present to Catherine lady Walpole, from count Dehn, envoy from the duke of Wolfenbuttle.

A square brown china cup to measure tea.

An old white china tea-pot, with birds and flowers finely painted in Europe.

A bagpiping boy and a dancing girl, of Seve biscuit.

Six fine old cups, white within; without, japanned black and mother of pearl: very rare.

An ewer enamelled on copper, with naked horsemen fighting.

A blue and gold coffee-cup and saucer, with birds on white cartouches, of Sevres china.

A cup and saucer, all blue and gold, of ditto.

An old glass tankard, with a battle of Turks and christians in black, finely drawn.

Ditto of old Venetian glass striped with white, mounted in silver gilt; on the lid, arms of Parr enamelled.

Six handle cups and saucers with green landscapes on white, of Chelsea china.

An urn and cover of red Portuguese earth.

Two large coloured saucers with figures.

Two small ditto basins with flowers.

Two large coloured basins.

Two white saltcellars with crawfish in relief, of Chelsea china.

A fine square plate, à la Grecque, of Sevres china.

Two old blue and white trays.

Two Saxon coloured saucers, cinquefoil.

Two green and gold salts, with flowers on white, of Sevres china.

Two white Chelsea salts on feet.

Two small blue and white basins.

A boy supporting a shell, finely modelled in red earth: the first sort of Saxon china before it was glazed or painted, and

and which was only given as presents by the elector. Extremely rare.

Three pieces of rocks, made of rice; given by Mr. Rafter, Mrs. Clive's brother.

Two Chinese basons enamelled with coloured flowers on copper.

A red cup and saucer, glazed; the second sort of Saxon china: rare.

Two blue and gold handle cups and saucers, with birds on white cartouches of Seve china.

One ditto, green.

One ditto, blue and gold in zigzags, and garlands on white; very beautiful.

Two white barrels with vines and grapes, of Chelsea china.

Two small basons with coloured flowers, of the best modern china.

A very fine standing cup and cover, enamelled on copper with the story of Sampson, from the designs of Parmegiano.

A small dejeuner of blue and gold Seve china: very pretty.

A handle cup, saucer, and square plate, of blue and gold Seve china, with sea-pieces admirably copied from Vernet's pictures.

Ditto of blue, green, and gold, with flowers on white.

Two porringers of Portuguese earth.

An octagon saltcellar enamelled on copper, droll figures on the

the sides with old French verses: at top, a head, *Je suis Paris*; at bottom, another, *La belle Helene*.

A copper tray, scolloped and enamelled with saint John and flowers; a present from Mr. G. Montagu.

A very large glass urn, damaged, found near London; a present from Dr. Ch. Lyttelton, bishop of Carlisle.

Six coloured handle cups and saucers, a tea-pot and sugar-dish, in shapes of leaves, of Chantilli china.

Four small blue and white eggshell cups.

The present dauphiness of France, a large medallion of Seve biscuit; a present from the duchess dowager d'Aiguillon in 1771.

Two handle cups and saucers, different patterns à la Grecque, of Seve china.

Two butter-pots and plates of blue and white delft ware; presents from lady Ailesbury.

A red cup and saucer, clouded.

A small square brown tea-pot.

A jug of old clouded glass.

Two Saxon tankards, one with Chinese figures, the other with European. These tankards are extremely remarkable. Sir Robert Walpole drank ale; the duchess of Kendal, mistress of king George the First, gave him the former. A dozen or more years afterwards, the countess of Yarmouth, mistress of king George the Second, without having seen the other,

other, gave him the second; and they match exactly in form and size.

Two dessert-dishes of coloured Japan china.

A scalloped sugar-dish of old china, white without, striped with colours within: rare.

A basin and plate of scalloped Saxon china.

A plate with small flowers, ditto.

A Monteith of coloured Seve china: beautiful.

Two old white china candlesticks, mounted in silver.

A large scalloped and coloured bowl of Japan china.

A pale green and white flat basin; very old.

Two green jars.

A mug of earthen-ware with Arabic characters.

A sugar-dish, cover and plate, of Japan china.

A green ewer with a purple handle.

An Etruscan cup with two handles, and an owl on it.

Two very small brown tea-pots.

Medallion of Henry quatre, in Seve biscuit.

Four blue and white chocolate-cups, and four saucers.

A triangular saltcellar of fayence with fine figures on terms.

An old Venetian glass cup and saucer, with gold flowers.

A cup of Matlock spar, on a foot.

An urn, ditto.

Four dessert-plates of fayence, with figures and boys round the borders; by Pietro Cortona: very fine. A fifth ditto, with goats; a present from lady Diana Beauclerc.

Two light purple handle cups and saucers with landscapes, of Seve china.

A larger cup and saucer, à la Grecque, ditto.

A scolloped Japan tray.

A fine glass urn with golden boys; Roman: described in doctor Middleton's antiquities.

A tall blue and white tea-pot with flat sides.

A round brown tea-pot, quite flat.

A fine old blue and white box and cover, a present from lady Ailesbury.

A vase with two handles of Portuguese earth.

A cup, ditto, with fantastic forms within it: given by lady Mary Churchill.

A green and white mug and saucer, with figures on white, of Seve china.

Ditto with rustic implements; very genteel.

A white old triangular piece of china and cover, for eggs.

An old white beaker.

Two large blue and white tea-pots.

Twelve old blue and white dessert-plates with figures.

A small dish of Chelsea china in a dessert pattern.

A blue and white beaker with a Chinese procession.

Two blue and white soup-dishes with figures.

Ten dishes of old Japan ware.

An ancient tall drinking-glass, with arms and devices; a present from sir John Hawkins.

Two large blue and white beakers.

Two ditto, of different patterns: a companion to one of them is in the great bedchamber.

A blue and white dish of Chelsea china.

A Turkish earthen bottle, with leaves cast in relief on it.

Two blue and white jars.

Two green, blue, and white beakers.

Two blue and white beakers.

A large fayence dish.

A fine Turkish jar and cover, with cast leaves: curious.

A large blue and white dish.

A blue and white basket of Chantilli china.

A white Seve faucepan that bears the fire: 1771.

Two blue and white beakers.

Two small coloured ditto.

Two square blue and white bottles.

An odd green and white tea-pot.

A tyle from the kitchen of William the Conqueror at Caen in Normandy.

Two basons of most ancient Gombroon china; a present from lord Vere, out of the collection of lady Elizabeth Germaine.

A beautiful green bason.

Ten coloured patypans of different sizes.

An old white dish.

A dish and four dessert-plates, brown, blue, and white.

A large

A large blue and white dish, and a small ditto.
 Four green leaves of Staffordshire-ware for a deffert.
 A tea-kettle of brown china.
 A white jar.

CHINA in the WAITING-ROOM.

Two ice-pails with vines, of Saxon china.
 A white butter-pot and plate of Chantilli, and two blue and white saltfellers, ditto.
 Two monteiths of Tolle, a new French metal japanned.
 Four oblong deffert-dishes, four leaves, and twelve plates, with coloured fruits and flowers, of Chelsea china.
 Twelve blue and white coffee-cups and saucers of Chantilli.
 Twelve black and white tea-cups and saucers of Bow china.
 Two red and white handle cups and saucers with boys, of Seve.
 A fine coloured ice-pail and cover, ditto.
 A blue and white delft butter-pot and plate.
 Two white and gold salts of Seve.
 Twenty-four white plates with knurled borders and gold edges, four deep leaves, two square plates, and a cream-bowl, of Seve.
 A large white plate, and a white glass beaker.

A blue

A blue and white basket, two round cheefe-pots and plate, and a sceau for liquors, of Chantilli.

Twelve fine plates coloured, with rich blue edges, of Seve.

Two ditto, larger.

Six ditto, blue and white.

Two green Staffordshire flower-pots with masks, and two plates.

THE LITTLE PARLOUR,

OVER the door is a shield of Mr. Walpole's arms and quarterings on painted glass, by Price. The room is lighted by a bow window, in which, among other pieces of painted glass, are the arms of Ayliffe impaling Clifford of Frampton; given by Mr. George Selwyn.

The chimney is taken from the tomb of Thomas Ruthall bishop of Durham, in Westminster-abbey. The room is hung with gothic paper of stone colour in mosaic, on which are wooden prints by Jackson of Venice; and furnished with a table and eight chairs of ebony, bought at the lady Conyers's at Great Stoughton in Huntingdonshire, as were others in other chambers. On the table is a bronze of the Hermaphrodite.

THE YELLOW BEDCHAMBER.

THE chimney-piece was designed by Mr. Bentley.

This room is hung with prints * from pictures in the collection of lord Orford and Mr. Walpole, or some way relating to them. On the ebony table, two large old blue and white china candlesticks, and a writing-box of sandal wood inlaid with ivory, given by lady Hertford; and over the table, a looking-glass in an ebony frame.

THE BREAKFAST-ROOM, ONE PAIR OF STAIRS:

FURNISHED with blue paper, and blue and white linen.

Black and yellow painted glass set in plain blue glass in the bow window. On the writing-table, an inlaid writing-box made by Langlois. The chimney-piece and windows are not truly gothic, but were designed by Mr. W. Robinson of the Board of Works, before there was any design of farther improvements to the house.

Over the chimney, a glass in an ebony frame, a present from the reverend Mr. Hemings of Twickenham: two blue and white flower-pots of Seve china: and two candlesticks with Chinese figures, by Martin, and china flowers. On one side of the glass,

Mary

* The Cottage is hung with other prints of the same kind.

Mary Lepelle lady Hervey ; a print.

A moonlight ; by Bernard Lens.

A frame with nine miniatures, viz.

A young bride ; by Isaac Oliver. } Of the family of Digby,
A lady ; behind her a red curtain. } but not known.

Venetia Stanley lady Digby, aged 19, very beautiful ; by Peter Oliver.

Sir Kenelm Digby and lady Digby, after Vandyck ; by ditto: set in the form of a book with covers of gold enamelled.

The same lady Digby, as she was found dead in her bed ; by ditto, after ditto ; set in gold enamelled black ; on which behind is a sphere : it seems to mean, that the world was in mourning for her. Sir Kenelm was passionately fond of this lady, who, lord Clarendon says, was of *extraordinary beauty and as extraordinary fame*. At Windsor is a whole length of her, by Vandyck, treading on serpents, to imply that the stories told of her were the produce of malice. At Goat-hurst, where they lived, are two busts of her in bronze ; on the pedestal of one are inscribed these tender words, *Uxorem vivam amare voluptas, defunctam religio*.

Sir Kenelm Digby, when young ; by Peter Oliver : very fine.

Lady Digby, again, most beautiful ; by ditto.

Lady Lucy Percy, daughter and coheirefs of Thomas earl of Northumberland who was beheaded, wife of sir Edward Stanley, younger son of the earl of Derby, mother of Vene-

tia

tia lady Digby; by Isaac Oliver. She is still more beautiful than her daughter, though dressed very unbecomingly in a great black hat and large ruff; only set off by a lilac ground. This is perhaps the finest and most perfect miniature in the world. All the seven last are wonderfully preserved, though found in a garret in an old house in Wales, belonging to a Mr. Watkin Williams, probably descended from Sir Kenelm, one of whose sons left only two daughters that were married into Welch families. This set of pictures cost Mr. Walpole 300 guineas.

On the other side of the glass, another frame, containing, Robert earl of Essex, favourite of queen Elizabeth; set in a case enamelled with flowers.

Henry Carey lord Hunsdon, knight of the garter 1585; by Hilliard: set in black enamel. These two from the collection of lady Elizabeth Germaine.

A lady of the family of Digby; belonging to the set above-named; set in a white enamelled case.

The duc de Vendome, with a red knot; by Petitot.

Madame la princesse Palatine; by ditto.

Madame la duchesse de Montpensier, grandmother of mademoiselle; by ditto. These three from the collection of the comte de Caylus.

La duchesse de Montbazon, called La Belle des Belles; by ditto.

Holbein,

Holbein, in a round, original by himself.

An exceedingly fine watch, given to general Fairfax by the parliament after the battle of Naseby; by P. Bordier, brother-in-law of Petitot. On one side is Fairfax on horseback, after Vandyck's king Charles; on the other, the house of commons; behind, the battle. It was bought at the sale of Thoresby's museum, who has described it in his *Ducatus Leodiensis*.

Anne Liddel duchess of Grafton, and lady Anne Fitzroy, a child; and Voltaire; cut out in card, by M. Hubert of Geneva.

Fontenelle, a drawing; bequeathed to Mr. Walpole by lady Hervey.

A landscape, a drawing in water-colours; by Vanderneer.

Inside of Walpole church in Lincolnshire; by Vertue.

View of Mad. du Deffand's room and cats; a print; with verses by the president Henault.

A print of count Antoine Hamilton.

Head of the comte de Grammont; copied from the original at the convent of the Grands Augustins at Paris.

Two prints of Rubens's own house.

Inside of King's college chapel; by Canaletti.

Two views of Paris, by Raguenet.

Print of lady Mary Coke.

A secretaire of inlaid woods.

H

Cupid,

Cupid, in Seve china.

Two blue and white square tubs, of ditto.

A blue bafon, mounted in or morlu; it belonged to madame de Pompadour.

An urn of granite, brought from one of the Greek islands, and given to fir Robert Walpole by fir Charles Wager.

Ditto of oriental alabafter, given to fir Robert Walpole by general Charles Churchill.

A view of Tivoli; copied by Muntz from Gaspar Pouffin.

A fea-piece; by Back Huyfen: very good.

Richard 3d. and his queen; a drawing from painted glafs, by Vertue.

Madame la marquife du Deffand and the ducheffe de Choiseul giving her a doll, which the former, who was blind, holds out her hands to receive; alluding to her calling the ducheffe *Grand Maman*. Every part of the room is exactly represented, and madame du Deffand most exactly like, which the ducheffe is not; by M. Carmontel, a gentleman belonging to the duke of Orleans, who has done in the fame manner most of the court of France: a washed drawing.

Over the clofet door, View of St. John's gate at Colchester, on blue paper, by Muntz.

Virgin and child, a highly finished illumination: it belonged to Gaston duke of orleans.

Francis 1st. receiving the homage of the clergy, law, and army;

army; an illumination. Cardinal du Prat as chancellor is at the head of the law. Two of the officers on the fore ground are engraved in Montfaucon's Antiquities of France.

View of the hotel de Carnavalet, where madame de Sevigné lived, in la rue Coulture St. Catherine, at Paris; built by Du Cerceau; painted by Raguenet.

A woman reading; small whole figure; great nature; by Le Duc.

A French clock, with Chinese figures, by Martin.

A girl's head, in oil; very lively; by A. Cuyp.

A king of France taking an oath before a pope, figures kneeling: an illumination.

Print of Mr. W. Mason, the poet.

Two old blue and white china jars; a candlestick of Seve china; tea-things of old china; a small tripod of or moulu to burn incense; and a red velvet purse embroidered with gold and old French arms, to hold counters.

THE GREEN CLOSET.

IN the windows are some very curious pieces of painted glass. One round pane (one of the best in the house) represents the story of the law-giver, who having enacted a law for punishing adultery with blindness, and his own son being convicted of it, he gave up one of his own eyes to save one
of

of his son's. The drawing is fine, and the figures of the legislator and of the young soldier who contemplates him, are evidently taken from some picture or design which gave the hint to Vandyck for his Belisarius, now at Chiswick. There are other curious panes: one with a rose impaling a pomegranate, the device of Henry 8th. and Catharine of Arragon; others with a crown in a thorn-bush between the letters H and E, the device of Henry 7th. which he assumed after the battle of Bosworth, where Richard's crown was found in that manner. Over the door,

A view of Mr. Pope's house at Twickenham, painted since the alterations made by sir William Stanhope; by Scott in his very best manner. On the same side of the room are the following pictures, most of them small:

A portrait of Sarah Malcolm, who was hanged for murdering her mistress and two other women in the Temple. She is sitting at a table in Newgate, with popish beads before her. This was drawn by Hogarth the day before her execution, and she had put on red to look the better.

Four landscapes in water-colours; by Baudin,

A landscape in needle-work, by lady Ailesbury, after Van Uden.

Eight views of ruins at Rome and other places; by Luca-telli.

A landscape in Indian-ink, with Italian, Chinese, and Gothic buildings; by Mr. Bentley, in his best style.

The

STRAWBERRY-HILL.

29

The head of old Dahl the painter, in water-colours, by himself: oval.

Cibber the statuary, with a pair of compasses in his hand, in water-colours; by Christian Richter,

George Granville lord Lansdown, in red; ditto; by Vertue, after Kneller.

Two small pictures, in oil, the stories of Susanna and the elders, and of David and Bathsheba: Italian.

A beggar-boy with a bird's-nest, water-colours on ivory; by Mr. Horace Walpole.

Queen Henrietta Maria; by Dixon.

Mary princess of Orange, mother of king William; by Hoskins.

Sir Robert Walpole and Catharine lady Walpole; heads carved in ivory.

An old head, in a laced night-cap and ruff; by Cornelius Jansen.

Lady Arabella Stuart, when a child; by Isaac Oliver.

Zachary Kneller, brother of sir Godfrey; by Vertue, after Kneller.

St. Catharine reading; after Correggio, by Catharine lady Walpole.

At the end fronting the window:

A pot of Carnations, drawn at Chelsea from the life by Van Huysum, who lived there two years with sir Robert

I

Walpole:

Walpole: he was brother to the famous flower-painter: in oil.

Robert Walpole, father of fir Robert Walpole; a head in crayons.

Mary Burwell, his wife; ditto.

An herb-market and a fish-market; after Teniers, in oil, by Angelis.

Sir Jeffery Burwell, grandfather of fir Robert Walpole; he is an old man fitting; a death's head by him: in crayons.

Mary, daughter and coheirefs of fir Robert Crane, of Chilton in Suffolk; his wife: in crayons.

A stable-yard, with a cart and a woman paring turneps; by J. H. Müntz: in oil.

Six curious pictures in water-colours of Mary de Medici and Louis 13th. and five great duchesses of Tuscany; copied from a chamber at Poggio Imperiale near Florence, where the originals are dressed in the very cloaths they wore, pasted on the hangings, with the faces painted on sattin.

Six more drawings of ruins, by Lucatelli.

Anna Chamber countess Temple; by Hamilton.

Henry Carey earl of Monmouth, knight of the bath, translator of many works;* by Theodore Ruffel.

Pope Benedict 13th. in wax: behind it is his elogium, written by Mr. Walpole and printed in his Fugitive Pieces.

Lady

* See his article in the Catalogue of Royal and Noble Authors.

Lady Newburgh, lord Lansdown's Myra, in widow's weeds; copied by young Lens from the original of fir Godfrey Kneller, in the collection of the earl of Cardigan: in water-colours.

The countess of Buckingham, mother of duke George Villiers, in mourning; by ditto: from the same collection.

Anna Maria Brudenel countess of Shrewsbury, famous for her amours with the second George Villiers duke of Buckingham; by ditto, from ditto.

James Stuart duke of Richmond and earl of Litchfield, husband of the beautiful Mrs. Stuart whom Charles II. was in love with; in armour; by Cooper.

Sufan Airmine lady Bellasis, mistress of James II. by Cooper, unfinished.

Lady Anne Watson, daughter of Thomas earl of Strafford; by ditto.

Spencer Compton earl of Northampton, killed in the civil war.

A lady's head, temp. James I.

Two ladies of the court of queen Elizabeth; by Hilliard. These five belonged to Spencer Compton earl of Wilmington.

An infant's head, sleeping; by Vischer: very natural, in black lead.

A boy's head, in red and black chalks; by Peter Oliver: very lively.

A lady's

A lady's head ; in a black hood ; by Cooper.

Boncourt, a French comedian.

A gentleman's head, in oil ; oval, in a metal case.

Thomas earl of Arundel ; small head in oil.

Charles 2d. in robes of the garter ; in water-colours, after Lely ; done by Richard second lord Edgcumbe, at the age of sixteen.

Two pieces of fruit and flowers, in water-colours ; by old Lens.

Mrs. Scott, the painter's wife ; by Deacon.

Mr. Pope, by young Lens, in water-colours ; round.

Pomona ; by Clinksted.

Mr. Thomas Gray ; etched from his shade ; by Mr. W. Mafon.

A landscape on copper ; by Roland Savery.

Lord Herbert of Cherbury ; a print coloured from the original of Isaac Oliver.

William lord Mansfield ; in oil, by Wootton.

Zeeman, junior, painter, in blue ; by his father.

Impression of Oliver Cromwell's privy seal.

The two sons of the old Pretender ; painted at Rome in 1740.

On the window-side fronting the door, beginning on the left hand :

A view of the Thames from Mrs. Clive's house at Twickenham ; in blue and white, by Muntz.

A sprig

A sprig of orange-flowers, and another of apple-blossoms; by Catharine lady Walpole, in water-colours.

A bunch of white roses; by ditto.

Four more views of ruins; by Lucatelli.

James 5th. and Mary of Lorrain his queen; in water-colours; by Wale, from an ancient original in the possession of the duke of Devonshire at Hardwicke.

A Chinese building, designed and drawn by Mr. Bentley for the corner of the wood at Strawberry-hill, where the chapel now stands; in Indian ink.

The Farnese Hercules, in wax; by Goffet.

Cleopatra, in water-colours; Italian.

Mrs. Beale, and her son Charles; heads in water-colours, by her.

Profile head of a Magdalen, a coloured print by Le Blon.

A red and white rose, executed in feathers.

Bishop Burnet in robes of prelate of the garter; by Mrs. Rose.

Prince Charles of Lorrain, in a frame of tortoisshell.

Then pass to the right hand:

Over the window, B. Hoadley bishop of Winchester, in wax; by Goffet: and,

Charles Townshend chancellor of the exchequer: ditto.

Boors reading: Flemish.

A landscape; by Teniers.

Two more views of ruins; by Lucatelli.

The arms of fir Robert Walpole and Catharine Shorter, cut in paper on looking-glafs, by Bermingham.

A converfation, after Watteau, in water-colours; by Mr. Horace Walpole.

- Defign for arms of the two clubs at White's; drawn by the fecond lord Edgcumbe, and invented by him, Mr. G. A. Selwyn, Mr. Geo. J. Williams, and Mr. Hor. Walpole, at Strawberry-hill. The arms as follow: Vert (for the card-table) on a chevron fable (for the hazard-table) two rouleaus of guineas in faltire between two dice proper, the chevron between 3 parolis at Pharaoh, proper; on a canton fable, a white balloting-ball. Crest, an arm and hand holding a dice-box, iffuant from an earl's coronet. Supporters, an old and a young knave of clubs (for the two clubs.) Motto, *Cog-it amor nummi*. The arms furrounded by a bottle-ticket infcribed, *claret*, in the manner of an order.

A king-fifher and ducks, of the Batterfea enamel: it was a manufacture, stamped with a copper-plate, fupported by alderman Janfen, but failed.

Charles 2d. young, in armour, with the garter; oval miniature.

Mary duchefs of Beaufort: oval miniature.

Mr. Congreve, in armour: oil.

A lady, with Italian mottoes; in a round.

A friar and lady at her toilette; by Clinkfted.

A woman

A woman hiding her lover from her blind husband ; by ditto.

A woman fainting in a man's arms ; after some great master : D. Rawdon fe. 1703.

Mr. Deacon's son ; by him : unfinished.

Drawing by Muntz, in water-colours, from an illumination to a book of earl Rivers in the library at Lambeth, and from which the frontispiece was taken to Mr. Walpole's Catalogue of Royal and Noble Authors.

At the end of the closet towards the Thames :

Over the window, Impression of the great seal of queen Henrietta Maria : and,

Frederic prince of Wales, in wax : by Goffet.

Two prints of old Stocks-market, and Essex-court in the Temple, coloured by Baudin.

Head of James first earl of Stanhope, in crayons.

Ditto of Mrs. Sclater, in a black gauze hood.

Four more views, by Lucatelli. There are 24 in all.

Sir John Shorter, grandfather of Catharine lady Walpole ; in crayons. He was lord-mayor in 1688, when receiving the pope's nuntio in the city, James 2d. gave him an additional quarter to his arms : two years before he had been one of the most distinguished aldermen on the Whig side. He died in his mayoralty.

Ifabella

Isabella Birkhead, his widow, in weeds. They are buried in the church of St. Saviour, Southwark : vide Maitland's History of London.

Mary Bruce duchess of Richmond ; by Hamilton.

Anne Conway, daughter of general Conway and lady Ailesbury, and wife of John Damer, eldest son of Joseph lord Milton ; by Hamilton.

Oval of Thomas earl of Southampton, in his robes ; but quære, whether it is not the last duke of Ormond but one ?

A landscape, by Polemberg.

Two landscapes in foot-water ; by Mr. Bentley.

A writing-box, richly carved in ivory.

Two blue and white jars.

A red velvet coffer ornamented with silver, and containing six dram-bottles of the old Venetian glass flowered with gold and enamelled tops.

A temple of old japan.

Two cups and saucers of Seve china.

A small table of ditto.

Three ebony chairs, and a small Persian carpet.

THE BLUE BEDCHAMBER.

HUNG with plain blue paper ; a linen bed ; eight chintz chairs ; a toilette worked by Mrs. Clive ; a looking-glass in a tortoisshell-frame, ornamented with silver ; and a cabinet

cabinet japanned by lady Walpole: on it, an ewer and basin of blue and white Sevres china.

The chimney-piece was designed by Mr. Bentley. Over it,

In a frame of black and gold carved by Gibbons, Sir Robert Walpole and Catharine Shorter; small whole lengths; by Eckardt, after Zink: the hounds and view of Houghton by Wootton. Sir Robert is sitting; by him, on a table, is the purse of chancellor of the exchequer, leaning against busts of George 1st. and 2d. to denote his being first minister to those kings: by lady Walpole are flowers, shells, a pallet and pencils, to mark her love of the arts. On the chimney,

A boy and girl in Sevres biscuit.

Three small flower-pots, ditto.

Two cups and saucers, ditto.

Four blue and white cream-cups.

In the bow window, some very beautiful painted glass.

General Henry Seymour Conway, and Caroline countess dowager of Ailesbury, his wife; their daughter Anne sitting on the ground playing with a dog. The attitudes and dresses taken from Watteau. This, and all the other pictures in this room, were painted by Eckardt.

Charles Churchill, and lady Maria Walpole, his wife, with their eldest son Charles; taken from the picture at Blenheim, of Rubens, his wife and child.

Sir Charles Hanbury Williams, knight of the bath.

L

Mr.

Mr. Thomas Gray;* taken from the portrait of a musician by Vandyck, at the duke of Grafton's.

Mr. Richard Bentley; from Vandyck. He holds in one hand his own design of the figure of Melancholy, drawn by him for the edition of Mr. Gray's Odes.

Mr. Horace Walpole; from Vandyck; leaning on the *Ædes Walpolianæ*: behind him, a view of Strawberry-hill. The frames are of black and gold, carved after those to Lombard's prints from Vandyck, but with emblems peculiar to each person.

THE RED BEDCHAMBER.

HUNG with crimson paper; a chintz bed, in which first Robert Walpole died in Arlington-street; by it a crucifix of ivory; an ewer and basin of Chantilli porcelaine; a red and white flower-pot, cup, saucer, and sugar-dish, of Sevres porcelaine; crimson Norwich damask chairs, and an arm-chair of patch-work.

Pictures on the chimney side:

A landscape; by Mullins.

An old beggar; by Teniers.

Catharine,

* With this motto, alluding to his Ode on Eton, which, though one of his best productions, was his first published, *Nec licuit populis parvum te, Nile, videre.*

Catharine, 2d. czarina; with Ruffian verses by the princess Daskiou: a print.

View of Elizabeth-castle in Jersey; by Muntz: in oil.

A landscape, view in Jersey; by Mr. Bentley: ditto.

Lady Gertrude Conway viscountess Villiers; a print.

Mary queen of Scots, in water-colours; by Vertue.

George Seymour Conway, youngest son of lord Hertford; a mezzotinto.

Christian 7th. king of Denmark; drawing by Falconet.

Side opposite the window:

Henry 8th. giving the charter to the surgeons; a print.

Falconet the painter's wife; by him: highly finished.

Mary Kirk, wife of sir Richard Vernon, known by the name of Warmestre in the Memoires de Grammont.

Le comte de Grignan; a print.

Madame de Caylus, neice of madame de Maintenon; a print.

Heads of goats; fine sketch, by Berghem; from the collection of Wootton the painter.

Two old men; an Italian sketch.

The father of Pope as he lay dead; drawn by his father-in-law Samuel Cooper: bought by Richardson, junior, at the sale of Mrs. Martha Blount, to whom Pope had bequeathed this and the three following.

Mrs. Editha Cooper, mother of Pope; by John Richardson, senior.

Mr.

Mr. Pope himself; ditto.

Henry St. John viscount Bolingbroke; ditto.

On the sides of the window:

Maria Walpole, countess of Waldegrave and duchess of Gloucester, with her eldest daughter lady Elizabeth Laura; a mezzotinto.

A moonlight on copper; by Bonus, jun.

The four seasons, heads of boys, in rounds; Italian: a present from the duc de Nivernois.

Macbeth in the witches cave; a print.

Sketch by Kent, for a niche in Mr. Fairfax's house in Saville-row.

Four drawings of humour, washed, by Elias Martin.

A French partridge, the real feathers; by G. Edwards.

An owl cut in paper, by Nat. Bermingham.

In a NICHE on the STAIRCASE;

THE armour of Francis 1st. king of France, of steel gilt, and covered with bas-reliefs in a fine taste: his lance is of ebony inlaid with silver; his sword steel; beautifully inlaid with gold, probably the work of Benvenuto Cellini: there is also the armour for the horse's head. This very valuable suit of armour was purchased from the Crozat collection in 1772, on the death of the baron de Thiers, when the czarina bought

bought the fine collection of pictures and bronzes. Over against it,

Henry 5th. and his family; bought in 1773, at the sale of James West, president of the Royal Society. See a description and print of this picture in the first volume of the Anecdotes of Painting in England.

THE ARMOURY

IS an open vestibule of three gothic arches, lighted by a window entirely of painted glass, and ornamented over the doors and niches with quarterings of the family of Walpole, painted by Grant.

Two suits of armour, on one of which is the mark of a bullet; two helmets; a gauntlet; a round leathern quiver; and two pair of stirrups; from Coombe, near Kingston in Surry, which seat formerly belonged to the great Richard Neville earl of Warwick. These arms therefore probably were part of those which served his troops when he marched to Westminster to awe the parliament in the reign of Henry the Sixth.

A beautiful Persian shield, made of a rhinoceros's hide tanned, enamelled, and almost transparent.

An Indian scimitar, the handle and ornaments of silver, in a green velvet case; and a dagger of the same; given by a

M

nabob

nabob to George Morton Pitt, governor of Fort St. George, and by his widow to Mr. Walpole.

An Indian sword, the blade waving and damasked, the scabbard of wood twisted with cane, the hilt an owl carved in wood.

Two Indian quivers, full of arrows.

An Indian lance, the head of wood double barbed and delicately wrought, that it might break into splinters in a wound.

Several other lances, spears, and Indian bows.

An Indian bow, painted.

An Indian scimitar in a Japan scabbard.

Four broad swords.

A collar set with spikes, for a wild beast.

Five pieces of a coat of mail.

An Indian pouch made of beads and hair; a girdle, ditto; a collar, ditto; and two leather shoes, ornamented ditto.

An Eastern powder-horn of steel and bronze, richly graven, and hung to a chain with a tablet of bronze, characters in the middle on a red ground.

An Indian mace, inlaid with brass.

A hatchet, ditto. These three from the collection of Monf. Julienne at Paris.

A tall ossuary with bas-reliefs, a sacrifice and tripods.

Another,

Another, curious for being a double one; the inscriptions,

VIBIA. P. L.
ASIATICE.
VIXIT
ANN. XXII.

P. VIBIVS.
P. D. L.
MODESTVS.

THE LIBRARY.

THE books are ranged within gothic arches of pierced work, taken from a side-door case to the choir in Dugdale's St. Paul's. The doors themselves were designed by Mr. Chute. The chimney-piece is imitated from the tomb of John of Eltham earl of Cornwall, in Westminster-abbey; the stone-work from that of Thomas duke of Clarence, at Canterbury. The cieling was painted by Clermont, from Mr. Walpole's design drawn out by Mr. Bentley. In the middle is the shield of Walpole surrounded with the quarters borne by the family. At each end in a round is a knight on horseback, in the manner of ancient seals; that next to the window bears the arms of Fitz Osbert, the other of Robsart. At the four corners are shields, helmets and mantles; on one shield is a large H, on another a W, semée of cross crosslets, in imitation of an ancient bearing of the Howards in Bloomfield's Norfolk. On another shield is the Saracen's head, the crest of the family, but here the catharine-wheel is

is above the cap, not on it; having been so borne by the Robfarts, as appears from the tomb of Lodowic Robfart lord Bouchier, in Westminster-abbey. On the fourth shield is an antelope, one of lord Orford's supporters, with the arms about his neck, resting under a tree, as in old devices. On either side is the motto of the family, *Fari quæ sentiat*; and at the ends, M.DCC.LIV, the year in which this room was finished, expressed in gothic letters: the whole on a mosaic ground.

The large window and the two rose windows have a great deal of fine painted glass, particularly, Faith, Hope, and Charity, whole figures in colours; a large shield with the arms of England, and heads of Charles 1st. and Charles 2d.

Over the chimney, an ancient and valuable piece, representing the marriage of Henry 6th. of which see a description in the first volume of the Anecdotes of Painting. Above it are that king's arms, the red rose crowned, and queen Margaret's arms in a lozenge. On each side, two bronze medallions of the Malatestas, sovereigns of Rimini.

A girl and cat, in water-colours, copied by Mr. Walpole from Rosalba.

A boy with a flute, by ditto, from a picture of Cavalier Luti, at Houghton.

Sir Robert Walpole, when a boy, in crayons.

Sir Edward Walpole, knight of the bath, grandfather of sir Robert; in oil.

Henry duke of Richmond, natural son of Henry 8th. in his shirt and night-cap, which is embroidered with black: a miniature.

Mary, sole daughter and heiress of Thomas lord Fairfax, wife of George Villiers second duke of Buckingham: ditto, by Cooper.

The queen of Bohemia, daughter of James 1st. ditto, by Isaac Oliver.

Sir Francis Drake: ditto, by Hilliard.

Charles Howard, earl of Nottingham, the great admiral, æt. 37; by Isaac Oliver.

Lady Penelope Compton, daughter of Spencer earl of Northampton, and wife of sir Edward Nicholas, secretary of state; by Cooper.

Count Gondomar, a fine head in oil; small.

A Roman simpulum in bronze.

Two bronze antique lamps and chains.

One ditto, modern, with a triton.

A cow, ditto.

An ancient brass padlock in the shape of a hand.

A greyhound in bronze, to keep down papers.

A silver standish that was sir Robert Walpole's, with his arms.

Pictures over the book-cases.

Lady Fairborne, daughter of sir ---- Rookesby, and wife of sir Stafford Fairborne; in red: neice of

Catharine, daughter of Edward Darcy, esq; and wife of sir Erasmus Philipps, of Picton-castle in Pembrokehire, grandmother of Catharine lady Walpole, whom she educated.

Sir John Shorter, lord mayor of London in 1668; in black.

Isabella Birkhead, his wife.

Francis Seymour Conway, earl of Hertford, and knight of the garter; by Astley, after Liotard.

Lady Isabella Fitzroy, youngest daughter of Charles second duke of Grafton, and wife of Francis earl of Hertford; by Eckardt, after Vanloo.

Henry Seymour Conway, only brother of lord Hertford; in armour; by Eckardt.

Charlotte, second daughter of John Shorter of Bybrook in Kent, and third wife of Francis lord Conway; in yellow.

Thomas Shorter, second son of sir John Shorter; in brown.

John Shorter, esq; of Bybrook in Kent, eldest son of sir John Shorter; in red.

John Shorter, in armour, eldest son of the foregoing, and brother of Catharine Shorter, eldest daughter of John Shorter of Bybrook, and first wife of sir Robert Walpole afterwards earl of Orford: a copy after old Dahl.

A clock

A clock of silver gilt, richly chased, engraved, and ornamented with fleurs de lys, little heads, &c. on the top fits a lion holding the arms of England, which are also on the sides. This was a present from Henry 8th. to Anne Boleyn; and since, from lady Elizabeth Germaine to Mr. Walpole. On the weights are the initial letters of Henry and Anne, within true lovers knots; at top, *Dieu et mon droit*; at bottom, *The most happy*.---One of the weights, agreeably to the indelicacy of that monarch's galantry, is in a shape very conformable to the last motto. The pedestal is adorned with small heads of bronze gilt of the age of Henry 8th. but which did not belong to the clock.

A semicircular ossuarium, an uncommon form: in the pediment, a tripod supported by grifons: at each corner, a horned head of a man and a bird, a festoon hangs from the horns of the men, on which are two more birds: the inscription,

P. LENILIO

MARTIALI

POSVIT FORTVNATVS

PATRONO SVO B. M.

A square ossuarium; heads of rams, a festoon and birds; the inscription,

D. Q. I. C. L. M.

FECIT MCEEI

CAEIIAPRI

MIGENIAPD.

These two urns were in the collection of doctor Meade.

An

An offuarium adorned on the front and sides with ivy and birds drinking out of a vase; the inscription,

D. TI. CL. M. SVCCESO. FILIO. PIENTISSIMO. QVI.

ANN. VIX. XIIX. PARENTES FEC.

Three more, square; and one round, with a bird on the cover.

Rare books of prints and drawings in the library.

Thuanus, the large edition in 14 volumes, enriched with beautiful prints of the best impressions, containing portraits of the principal personages. This set was collected by Sir Clement Cotterel Dormer.

Ædes Walpolianæ, the original drawings, with every print that has been engraved from the pictures, and with other prints and drawings of houses and buildings that belonged to Sir Robert Walpole and the family of Walpole.

A collection of initial letters from the beginning of printing, with some drawings of heads of the first printers; collected by Mr. Ames, author of the *Typographical Antiquities*.

Sir Julius Cæsar's travelling library, containing 44 small volumes in Latin, inclosed in a case the size of a folio.

Faithorne's works, most beautiful impressions; folio.

Hogarth's ditto; the most complete set of his works that is known, with some of his original drawings.

Vertue's ditto, in 2 large folios.

Teniers's ditto.

Twenty-one large volumes of prints after different great masters.

A volume of drawings by Mr. Sam. Scott and Mr. Müntz.

Three volumes of Hollar's prints.

Drawings of the Florentine gallery.

Prints from pictures, antiquities, and curiosities, at Strawberry-hill.

Drawings by Italian masters, bound in red morocco, 3 vols.

Drawings and prints of heads of English painters and artists, in 2 volumes folio.

Twelve large folios of English heads, bound in vellum, and ranged according to the reign of each king.

A large volume of the reign of George 3d. not ranged.

A volume of heads, antiquities, monuments, views, &c. by Vertue and others.

Designs by Mr. Richard Bentley, bound in marble and gilt.

Ditto by Rembrandt, Van Huyfum, &c.

Procession of knights of the garter temp. queen Elizabeth, copied by Vertue from the originals by Mark Garrard.

Curious books in the glass closet in the library.

Mr. Bentley's original designs for Mr. Gray's poems, bound in red morocco and gilt.

Six views after nature in Indian ink, by Bernard Lens.

A book of patterns for old point lace; exceedingly rare.

Baker on Learning, with MS. notes.

Holbein's prints for the bible, with French verses by Nicholas Borbonius.

Drawings of all the Spintrian medals.

Apologie de Jehan Chastel: very rare.

Mad. de Sevigne's Letters to M. de Pomponne on Fouquet's trial: MS.

Milton's Paradise Lost, given by the duke of Wharton to lady Mary Wortley Montagu, who has written verses in the first leaf.

A missal, engraved on copper-plates at Venice.

Deon's Letters, with prints of the principal persons: quarto.

Callot's pocket-book, with a great number of exquisite original drawings by himself: a present to Mr. Walpole from his brother Robert earl of Orford: very valuable.

Bizarie di varie figure di Giovan Batista Bracelli, pittore Fiorentino al Ill^{mo}. S. Don Pietro Medici: 1624. This most rare and singular book contains prints of human figures formed by the strangest materials, as diamonds, hoops, bladders, pieces of carpentry, battledoors, kitchen-stuff, &c. &c. It seems to be the composition of a madman, but the drawings are masterly, and the attitudes most noble.

Le Tombeau de Marguerite de Valois, with verses by 3 daughters of the protector duke of Somerset: very scarce.

The pocket-book, with his expences, of Robert Walpole, father of sir Robert Walpole.

Accounts of Blenheim, Stowe, Wilton, and other places, with MS. notes by Mr. Horace Walpole.

A German book with prints coloured of Charles 5th. and the German princes of his time.

The arms of the knights of the garter made by Richard 3d. in their proper colours, and bound in red velvet: a present from Walter Robertson, mayor of Lynn.

Description of Wilton, with drawings and notes by Vertue.

A book of heads and sketches, by Vertue.

A complete set of the books printed at Strawberry-hill.

A book of drawings of vases, bas-reliefs, and other antiquities.

Catalogue of the Harleian collection with the prices, and drawings of some of the curiosities by Vertue.

Dr. Percy's book of the earl of Northumberland's household.

Two books of swan-marks, on vellum: extremely rare.

A book of designs of buildings, by John Chute, esq; of the Vine.

Drawings of churches, monuments, &c. by sir Charles Frederick and Smart Lethuillier, esq; in 3 vols. folio.

A thin folio containing 35 prints after grotesque paintings.

The Iliad and Odyffey, the very books from which Pope made his translations: in one of the volumes is a view of Twickenham drawn by Pope.

Three

Three illuminated missals.

Whiston's Life, with MS. index of the principal passages.

Sir Thomas More's Life, with marginal writing by Philip earl of Pembroke.

The Charter of Forests, one of the original copies finely preserved, with the great seal of Edward 1st. appendant; found at Hackney 1743, among writings of the ancient family of Shordich, by Robert Bygrave; presented by him to sir Edward Walpole, and by him to his brother Horace.

Catalogue of the 25 most precious coins and medals in the rose-wood case.

1. An unique crown of king Edward 6th. bought at lord Oxford's sale in 1742.

2. Medal of pope Julius the 3d. in silver, struck on the restoration of the Roman catholic religion in England by queen Mary.

3. A satirical silver medal struck in Holland. On the obverse, the head of Oliver Cromwell laureated in armour. On the reverse he is kneeling in the lap of Britannia, with his breeches down; the French and Spanish ambassadors are contending which shall kiss first: the former says to the latter, *Retire toy, l'honneur appartient au Roi mon maitre Louis le Grand.* Very scarce; from lord Oxford's collection.

4. A silver medal; on one side the head of queen Mary of England, on the other, of Philip 2d. both in alto-relievo, and

and of the most exquisite workmanship. It was a trial-piece, and is certainly the finest modern medal known. It was bought by Mr. Walpole in Italy.

5. A large gold medal of Henry 8th. On the reverse, his titles in Hebrew, Greek and Latin. It is the first medal of the English series. From lord Oxford's collection.

6. A silver medal on the destruction of the Spanish armada. See an account of this medal, and the preceding, in Evelyn. From the same collection.

7. Coin of young king Henry, son of Henry 2d. From ditto.

8. Fine gilt coin of pope Paul 3d. Reverse, a Ganymede, admirably drawn: this beautiful coin was the work of Michael Angelo Buonaroti. From the collection of Baron Stofsch.

9. Silver medal of lord treasurer Southampton; by Abraham Simon.

10. Gold fragment of queen Elizabeth's last broad piece, described in the Royal and Noble Authors. Unique: from the Oxford collection.

11. Gold medal of Nero Claudius Drusus: reverse, trophies, *De Germanis*.

12. Gold medal of Trajan: reverse, his forum. These two are very rare.

13. Gold medal of Marc Antony: reverse, the head of Octavia, the only one of her known, which makes this medal of the highest value.

14. Gold medal of Otho: very scarce, and finely preserved.

15. Ditto of Pertinax: not only very rare, but in the most exquisite preservation.

16. Copper coin of king Ferdinand of Naples; a pun on the reverse; his arms, a *borse*; the motto, *Equitas regni*.

17. Silver coin of Eustace, son of king Stephen; very rare: from lord Oxford's collection.

18. A silver half crown of pope Clement 11th. Reverse, the pantheon.

19. Copper medal of pope Gregory 13th. on the correction of the calendar: the reverse, which is in beautiful taste, was designed by Parmegiano.

20. Silver medal of the same pope, on the massacre of St. Barthelemi: on the reverse, the destroying angel murdering the protestants; the legend, *Hugonotorum Strages*. This scandalous medal was called in and the die broken, which has made it very uncommon.

21. A silver coin struck by the republic of Florence when they declared Jesus Christ their king, to keep off the pope: from baron Stosch's collection: extremely rare.

22. Copper medal of Lorenzo of Medici, who stabbed duke Alexander: the reverse copied from Brutus's medal, with the cap of liberty between two daggers; the legend, *VIII Id. Jan* Very rare.

23. Copper

23. Copper medal of Clement 7th. Reverse, Joseph and his brethren: designed by Raphael.

24. Coin of Theodore king of Corfica: rare.

25. Brass satirical medal on queen Anne: reverse, the queen and lady Masham embracing; motto, *All for Love*.

MR. WALPOLE'S BEDCHAMBER, TWO
PAIR OF STAIRS.

THE chimney-piece was designed by Mr. Chute, and has great grace.

In the window, composed of seven lights, are several curious pieces of painted glass; as, the arms of Anne Boleyn with the quarterings which the king allowed her to bear of the families from which she was descended, though with no right of quartering; a large lion coloured; four large angels in black and white; cypher and portcullis of king Edward; arms of Clinton and Ratcliffe; five heads in black and white of Charlemagne, prince William, and prince Maurice of Orange, &c.

Over the chimney, View of the Vine in Hampshire, the seat of John Chute, esq; by Muntz.

A small print of Mr. Andrews's gothic house near Donnington-castle and Spine-hill, Berkshire; designed by John Chute, esq;

Fifteen small drawings of English and French comedians ;
by Fesch.

View of the gate at St. Edmund, at Bury.

A fable, in cut paper on looking-glass ; by Bermingham.

Over the door, Head of John Chute, esq; by Muntz, after Pompeio Battoni.

La signora Elisabetta Capponi Grifoni, a Florentine beauty;
by Ferd. Richter, 1741.

Patapan, a Roman dog, belonging to Mr. Walpole; by
Wootton.

Doctör Conyers Middleton; by Eckardt.

Doctör Thomas Ashton, fellow of Eton-college; by ditto.

Frederic prince of Wales, when a child: painted at Han-
over.

Ulrick, a young Turk belonging to king George 1st.

A man and woman in water-colours, after Watteau; by
Mr. Walpole.

A rural ball, after Watteau; by ditto.

Catharine Walpole, eldest daughter of sir Robert Walpole;
small head in oil.

Horace Walpole, when a child, in a white frock; in
crayons.

A sprig of orange, in water-colours; by lady Walpole.

A bunch of flowers, ditto; by lady Anne Conway, eldest
daughter of lord Hertford, and wife of the earl of Drogheda.

Drawing

Drawing of Rembrandt's mother, from the picture at Windsor, called the countess of Desmond; by Muntz.

Prints, of the house of commons and warrant for beheading Charles 1st. inscribed with a pen, *Major charta*; of Ethelreda lady Townshend; of lord Chatham; lord Holland; lord and lady Strafford; Mr. H. Walpole; and le comte de Guerchy.

THE STAR CHAMBER

IS a small anti-room, painted green, with golden stars in mosaic. It has a large window entirely of painted glass; and two triangular chairs taken from a piece of glass in the breakfast-room; a japan trunk; a card-table of the same; and a bust of Henry 7th. in stone, a model in great taste for his tomb, by * Torreggiano. Hence you go into a trunk-cieled passage, lighted by a window of painted glass, in which are many quarterings of Latton, a family formerly seated at Esher in Surry: in the window, a candlestick enamelled on copper. This passage leads to

THE HOLBEIN CHAMBER.

THE cieling is taken from the queen's dressing-room at Windsor.

Q

The

* Vide Anecdotes of Painting, vol. 1, p. 102.

The chimney-piece, designed by Mr. Bentley, is chiefly taken from the tomb of archbishop Warham at Canterbury. Over it, a glass in a black and gold frame; and a piece of Roman fayence in the shape of a boat, Bacchus and Ceres in relief in the middle.

The pierced arches of the screen from the gates of the choir of Rouen; the rest of the screen was designed by Mr. Bentley.

In the bow windows some fine painted glass, and the arms of England, and those of George prince of Denmark; the ground is a beautiful mosaic of crimson, blue, and pearls, designed and painted by Price of Hatton-garden.

A table and six chairs of ebony. On the table a tray with four ancient combs; one of ivory is extremely ancient, carved with figures, on one side representing persons bathing and going to bed, on the other, two men and a woman with musical instruments; another comb, said to have belonged to the queen of Scots, is of tortoisshell studded with silver hearts and roses; the two others of tortoisshell likewise, of which the one with very long teeth belonged to the father of the first lord Edgcumbe, and was used when the large flowing wigs were in fashion: two bottles of Roman fayence, and a basin and ewer of purple and white Seve china.

A very ancient chair of oak, which came out of Glastonbury-abbey; on it are carved these sentences, *Joannes Ar-*
thurus

thurus Monachus Glastonie, salvet eum Deus: Da pacem Domine: Sit Laus Deo. Lord Bathurst had several chairs copied from this.

The bed is of purple cloth lined with white fatten, a plume of white feathers on the center of the tester; the room is hung with purple paper. By the bed,

Christ crowned with thorns; by Mabeuse.

Over the chimney, an ancient painting of the emperor Maximilian and his son Philip the Fair: from the collection of Mr. Bryan Fairfax.

Lady Arabella Stuart, in white, whole length in water-colours; copied by Vertue from the original at Welbeck.

A man's head with a book; by Quintin Matsis: it was in Sir Robert Walpole's collection.

Anne Stanhope duchess of Somerset, second wife of the protector, whose portrait she holds in one hand: a present to Mr. Walpole from Mr. Bateman.

Catharine of Arragon, first wife of Henry 8th. by Holbein: it was in the collection of Sir Robert Walpole, and has been engraved among the Illustrious Heads.

* Sir Thomas More. This and all the following heads marked with an asterisk, were taken off on oil-paper by Vertue from the original drawings of Holbein in queen Caroline's closet at Kensington, now removed to Buckingham-house.

Lord

Lord Vaux. This is done in the same manner by Muntz, from the same collection.

A man's head, in old enamel.

Margaret queen of Navarre, who wrote the Tales : ditto.

Between the bow windows :

Queen Elizabeth, when a girl.

* Lady Henningham.

* William Parr, marquis of Northampton, brother of queen Catherine Parr.

* A lady, unknown.

* Ditto.

* Sir Nicholas Poines.

* Catharine Willoughby, fourth wife of Charles Brandon duke of Suffolk.

Queen Mary, when a child : from Mr. Fairfax's collection.

* Henry Howard earl of Surrey, the poet.

* Nicholas Cratzer, astronomer to Henry 8th.

* Edward Clinton earl of Lincoln, lord high admiral of England.

* Dr. Colet, dean of saint Paul's.

* Sir Thomas Elyot, the author.

* Henry Howard earl of Surrey ; younger than the preceding.

Edmund Montacute, a judge ; by Holbein : from sir R. Walpole's collection.

* A gen-

- * A gentleman, unknown.
- * William Fitzwilliam earl of Southampton.
- * Edward Stanley, earl of Derby.
- * Borbonius, a French poet.
- * Fisher, bishop of Rochester. Richardson the painter had another of these, which was engraved among the *Illustrious Heads*.
- * Thomas Boleyn earl of Ormond, father of queen Anne Boleyn.

On the side opposite to the chimney :

A fine and very valuable picture by Lucas de Heere, representing Frances duchess of Suffolk, mother of the lady Jane Grey, and Adrian Stoke, her second husband. This picture was in the collection of the earl of Oxford, and was engraved by Vertue : *Vide Walpole's Anecdotes of Painting*.

Philip and Mary, copied in water-colours by Vertue, from the original by Antonio More, at the duke of Bedford's at Wooburn-abbey.

A single combat before the emperor Maximilian, in terra cotta, by Albert Durer.

Anthony king of Navarre, father of Henry 4th. by Janet.

The marechal de Montluc, who wrote the Commentaries : by ditto.

A very small head of a man, in a round; by Holbein.

* Lord Wentworth.

R

* Lord

- * Lord chancellor Rich.
- * Lady Rich, his wife.
- * Sir Thomas Wyat, the poet.
- * George Brook lord Cobham.
- * Edward 6th. when a child; very like Henry 8th.
- * Jane Seymour.

Frobenius, the printer, in a round.

Melancthon, ditto; by Holbein: very fine.

A man's head with a black beard; ditto.

Margaret queen of Scots, daughter of Henry 7th. copied by Vertue from the picture at Hampton-court.

Jane Gray; by ditto, from the original, that was the duke of Somersfet's.

Head of Henry 8th. with a watch at his neck, carved in box by Holbein.

* John Ruffel, first earl of Bedford.

* Anne Savage lady Berkeley. She held up the train of Anne Boleyn, at her coronation: *Vide Stowe's Chron. p. 543.*

* Sir W. Sherrington, master of the mint, whence he furnished admiral Seymour with money.

* Sir John Gage.

* Sir Richard Southwell, one of the accusers of the earl of Surrey.

* Queen Mary, when princess.

* Thomas duke of Norfolk; beheaded in the reign of Elizabeth: young.

Holbein

Holbein; in a round. }
 Anne Boleyn; ditto. } Copies by Eckardt.

Charlotte, daughter of Francis 1st. died at five years of age; by Janet: fine. From sir Luke Schaub's collection.

Lord Darnley, by Vertue, from the original at Hampton-court.

A young man's head; by Holbein.

Leonora, queen of Portugal, sister of Charles 5th. and afterwards second wife of Francis 1st.

Henry 8th. fine whole figure in terra cotta, by Holbein; from lady Elizabeth Germaine's collection.

Pictures in the alcove:

The triumph of Riches; by Frederic Zuccherò, from the original of Holbein that was in the Steel-yard. Henry 8th. in the character of Cræsus, and one of his queens, I believe Anne Boleyn, follow the carr. *Vide a description of this and the next in the Anecdotes of Painting, vol. 1.*

The triumph of Poverty; ditto. These drawings, invaluable by the originals being lost, were purchased from Buckingham-house, when sir Charles Sheffield sold it to the king.

A man's head with a red beard, in the manner of Holbein.

Claude de Clermont sieur de Dampierre; by Janet.

Thomas lord Cromwell, in a round, after Holbein.

Lord keeper Bacon; by Vertue.

Mrs. Margaret Roper, daughter of sir T. More; copied out of the great picture of the family, by Vertue.

Mary

Over the door, Mary queen of Scots, a head; on her ruff, the arms of France and England.

Between the door and the screen :

Henry the 8th. three quarters; a present from the reverend Mr. Pennicott.

Henry duc de Longueville; in crayons.

Sir John Godsalve, knight of the carpet; after Holbein.

A drawing of architecture; by ditto.

Sir Thomas Wyat; by Vertue.

A man's head; an original drawing, by Holbein.

A man in a masquerade habit; ditto.

Louis 11th. an original: his prayer-book opens in the shape of a heart.

A carpet worked by Mrs. Catharine Clive, the celebrated comedian.

THE GALLERY.

FFIFTY-six feet long, seventeen high, and thirteen wide without the five recesses. The cieling is taken from one of the side isles of Henry 7th's. chapel. In the windows, painted by Peckitt, are all the quarterings of the family. The great door is copied from the north door of saint Albans, and the two smaller are parts of the same design. The side with recesses, which are finished with a gold net-work
over

over looking-glass, is taken from the tomb of archbishop Bouchier at Canterbury. The chimney-piece was designed by Mr. John Chute, and Mr. Thomas Pitt of Boconnoch. The room is hung with crimson Norwich damask: the chairs, settees, and long stools are of the same, mounted on black and gold frames. The carpet made at Moorfields.

East end :

Laura and Charlotte Walpole, eldest and youngest daughters of sir Edward Walpole, and wives of Frederic Keppel bishop of Exeter, and of ----- Talmach earl of Dyfart; Mrs Keppel in white, lady Dyfart in pink : by Ramsay.

Marriage of Henry 7th. and Elizabeth of York; by Maubeuse : *Vide Anecdotes of Painting.*

Sir Francis Walsingham, with a view of his house at Scadbury in Kent; by Frederic Zuccherro. This picture has been engraved by Houbraken amongst the Illustrious heads.

Sir George Villiers, leaning his hand on the head of a greyhound. He was father of George duke of Buckingham, and lord Clarendon relates a story of his ghost. This is a very fine picture.

George duke of Buckingham, his son; a very fine head, by Rubens : the garter is put on the wrong way.

Admiral Montagu, earl of Sandwich; by sir Peter Lely : very good head.

Holy family, with boy angels, in a landscape; by Van

S

Artois

Artois, scholar of Rubens : from sir Robert Walpole's collection.

Inside of an ancient Flemish house.

A chest of old japan inlaid with mother of pearl.

Two coins of old japan with marble slabs : on one,

A bronze of Moses, after Michael Angelo :

A light blue pot pourri of Seve, mounted in or moulu :

Two octagon basons, Saxon, old china pattern.

On the other, a bust of a woman ; another pot pourri ; and two Saxon basons.

Chimney side, left hand :

Virgin and child, after the picture of Dominichino ; by John Davis, esq; of Watlington.

Mr. Leneve, master of the company of merchant taylors : a most bright and pure picture, by Cornelius Jansen.

Marguerite de Valois, duchesse de Savoie, sister of Henry 2d. of France ; he was killed at the tournament for her wedding ; by sir Antonio More. This picture belonged to king Charles 1st. In one niche,

Maria, second daughter of sir Edward Walpole, widow of James earl of Waldegrave, and wife of William Henry duke of Gloucester, brother of king George 3d. by sir Joshua Reynolds.

John Law, inventor of the Mississipi-scheme, and prime minister to the regent Philip duke of Orleans : one of the best of Rosalba's works.

Francis

Francis Seymour Conway earl of Hertford; by ditto.

Death of admiral Sandwich; by Scott.

Views, of Kirkstall-abbey, and of a church near Boulogne in France; by ditto.

The eagle, found in the gardens of Boccapadugli within the precinct of Caracalla's baths at Rome, in the year 1742. One of the finest pieces of Greek sculpture in the world, and reckoned superior to the eagle in the villa Mattei. There are extremely few fine statues of animals; the chief are these two eagles, the Tuscan boar, the Barberini goat, and the dog belonging to Mr. Jennings of Shiplake. The boldness, and yet great finishing of this statue, are incomparable; the eyes inimitable. Mr. Gray has drawn *the flagging wing*.* It stands on a handsome antique sepulchral altar, adorned with eagles too.

Frances Bridges, daughter of the lord Chandos, and second wife of Thomas Cecil earl of Exeter, on whose left hand she refused to lie on his tomb in Westminster-abbey. This picture, which is an excellent one of Vandyck, belonged to Richardson the painter, who has written a dissertation of eight pages on it in one of his books.†

A young

* Ode on the Power of Poetry.

† This lady was most falsely accused of many crimes, of which she was entirely innocent, and acquitted; of which see an account in Granger's Biographical History of English portraits, vol. 1, p. 548.

A young man; by sir Godfrey Kneller: quære, if not his own portrait? From the collection of Sclater Bacon of Cambridgeshire.

Over a door, Catharine Sidley countess of Dorchester, mistress of James 2d. and mother of the duchess of Buckingham; by Dahl.

Madame de Sevigné: a head.

A girl scowering pots; a curious picture, being painted by Watteau in the style of Rembrandt.

A landscape by Muntz, painted in encaustic, which he improved from count Caylus's rules.

Thomas earl of Arundel, and his grandson cardinal Howard; in water-colours, by Vertue, after Vandyck.

Right hand of the chimney:

----- Leneve, alderman of Norwich; son of the foregoing Leneve. The best picture sir Peter Lely ever painted, and as fine as Vandyck's countess of Exeter, before-mentioned.

His wife, in blue; ditto.

John lord Sheffield, husband of lady Douglas Sheffield, on whose account it was surmised that he was poisoned by R. earl of Leicester; by Ant. More: from Buckingham-house.

Henry Jermyn, earl of saint Alban's, favourite, and, as sir John Reresby says, second husband of queen Henrietta Maria: I believe by old Stone.

James earl of Waldegrave; by Reynolds.

Bacha Bonneval; by Liotard.

Henry Fox, lord Holland; by ditto.

Sea-piece; views, of Bristol-cross, and of a gothic farm near Marble-hill, belonging to the countess of Suffolk, and designed by Richard Bentley: all by Sam. Scott.

Vespasian, in bas-relief; a noble bust, bought out of the collection of cardinal Ottoboni. It stands on a Roman sepulchral altar, on which, in bas-relief, is a man sacrificing, with this inscription,

TI. CLAVDIVS AVG. L.

DOCILIS

AEDITVS AEDIS

FORTVNAE TVLLIANAE.

Over a door, Anne Hyde duchess of York; by Mrs. Beale, after sir Peter Lely.

Lady Sophia Farmor, eldest daughter of Thomas earl of Pomfret, and second wife of John earl Granville, prime minister to George 2d. by Rosalba. She is drawn as Juno.

Two men cheating another at cards; by John Miel: very good.

A landscape, in encaustic; by Muntz.

West end:

A large piece of Catharine de' Medici and her children, Charles 9th. Henry 3d. the duke d'Alençon, and Margaret queen of Navarre; whole lengths, by Janet.

T

Griffiere,

Griffiere, the painter; by Zouft: the fatten on the arm remarkably well painted.

A young man's head, æt. 18; admirable nature: by Giorgione.

A pot of flowers, highly finished, yet very free; by old Baptist.

Sevonyans, the painter, by himself; a very fine head.

Charles Brandon duke of Suffolk, and Mary queen of France. This picture was Lord Granville's. Kent designed the frame.

Tobit burying the dead. *And when Tobit found any dead, he buried them without the walls of Jerusalem:* by Benedetto Castiglione.

A coin of old japan; on it, busts of Julia Domna, Julia Titi, and Cicero; the latter a present from lady Hervey; a flat vase of white, blue, and gold Seve china, with cover and handles.

Another coin, ditto; statue of Harpocrates and Telephorus; Antinous, Greek work; and Zenocrates, a present from general Conway; a flat vase, like the former.

Window side:

Thomas lord Howard of Bindon, father of Frances duchess of Richmond and Lenox; whole length, in robes of the garter.

Lodowic Stuart, duke of Richmond and Lenox; ditto:
these

these two last came out of Luton-house in Bedfordshire, where the latter lived.

Frances duchefs of Richmond and Lenox. *See a curious account of this great lady in Wilson's Reign of King James the First.* This picture came from Easton-Neston, the seat of Thomas earl of Pomfret. By Mark Garrard.

Henry Carey lord Falkland, deputy of Ireland, and father of the famous Lucius lord Falkland; in white, by Vansomer.

Mrs. Catharine Phillips, the poetefs; a head: it belonged to Charles earl of Halifax.

Philip Villiers de Lisle Adam, the last grand master of Rhodes, which he defended two years against Soliman the Magnificent and a prodigious army: a head.

A view of Mount Orgueil in Jerfey; by Richard Bentley, efq;

Heads in the upper line, begin from the left:

Vandyck. Richard Rigby, paymaster of the forces and master of the Rolls in Ireland, by Eckardt. Prior, the poet. Cooke, the painter; by himself. General Edward Cornwallis, governor of Gibraltar and groom of the bedchamber to George 2d. by Eckardt. Pearce, fenior, ftatuary. Waller, the poet. Horatio lord Walpole, younger brother of fir Robert Walpole; by Vanloo. Mr. Chiffinch, privy-purse to Charles 2d. by Riley. Dobfon, the painter. George Keppel, third earl of Albemarle; by Eckardt. Sir Nicholas Dorigny,

Dorigny, the engraver. Van Wyck, the younger, painter. George Montagu, esq; by Eckardt, after Vanloo. Dahl, the painter. Anne Clifford,* countess of Dorset, Pembroke and Montgomery.

Thomas Howard duke of Norfolk, beheaded for the cause of the queen of Scots. In this picture he is young, and it was probably painted in the reign of Edward 6th. before he was restored in blood, for there are his arms without a coronet, and yet on his handkerchief are an N and a †, to mark his title and his religion.

A sea-piece; by Scott.

Bronzes in the windows; an Ibis: a Ceres with silver eyes, and a cow in her lap: the Laocoon: Antinous on a tripod: an ostrich, very spirited.

Two tables of solid granite, from the Farnese gardens at Rome; the frames black and gold, from a tomb in Westminster-abbey.

On the first table, busts of Marcus Aurelius: Domitilla, wife of Vespasian, exceedingly rare: a Camillus or sacrificing priest. Beneath, a bronze from John of Boulogne's rape of the Sabines: two antique urns of marble; that, with a cover heavily designed by Kent, belonged to Brian Fairfax.

On the other table, busts of Julia Mæsa; Faustina senior; and Antonia Claudii Mater; very rare. Beneath, the listening

* See an account of her in the second vol. of Royal and Noble Authors.

ing slave in bronze; and two antique urns of marble; on one this inscription. PAILIOVI RITIO FILIO SVO QVI BISIT ANNIS XX FECIT SIBI.

Two commodes of old japan with marble slabs; on one, a vase, boat-shaped, of deep blue Seve china, mounted in or moulu with snake handles; two large vases, ditto, of Roman fayence finely painted, and inscribed, *Fatte in botega de Oratio Fontana.*

On the other commode, another blue vase like the former; and two bottles of blue and white and gold Seve china, most beautifully designed and ornamented.

A mother of pearl box, with fishes and counters of the same; a present from Mrs. Clive.

THE ROUND DRAWING-ROOM.

HUNG. with crimson Norwich damask: the chairs of Aubusson tapestry, flowers on a white ground; the frames green and gold.

The design of the chimney-piece is taken from the tomb of Edward the Confessor, improved by Mr. Adam, and beautifully executed in white marble inlaid with scagliuola, by Richter. The dogs are silver: on the chimney are three large jars and two beakers, of silver also, bought at the auction of lady Eliz. Germaine; on the middle one is the rape

U of

of the Sabines embossed. Two silver sconces, with histories, on the sides.

A screen, worked in Chenille, to suit with the chimney, by the countess of Ailesbury.

The cieling is taken from a round window in old saint Paul's; the freeze was designed by Mr. Adam.

In the great bow window is a large shield of the arms of Robert Dudley earl of Leicester; under it a thornbush with H R, the device of Henry 7th; the arms of queen Elizabeth, on the left hand, from Essex-house in the Strand; roses; other arms of nobility; and six fine pieces, by a scholar of Price, from Raphael's bible. The surbase of the window is taken from the tomb of queen Eleanor in Westminster-abbey.

Over the chimney, lady Dorothy Percy countess of Leicester, in red, and her sister lady Lucy, the famous countess of Carlisle; a very capital picture of Vandyck, sold out of Penshurst by lady Yonge, when she inherited half of that ancient seat by the will of lady Brownlow. Mr. Hoare of Stourhead offered the last earl of Leicester of the Sidney family an hundred pounds for this picture.

Over the door, Mrs. Lemon, mistress of Vandyck, with a sword, as Judith; by Vandyck; bought out of Buckingham-house: very boldly and freely painted.

Bianca

Bianca Capello ; by Vafari ; bought out of the Vitelli palace at Florence by sir Horace Mann, and sent to Mr. Walpole : the hands never finished. Her story is thus written in a cartouche on the frame. *Bianca Capello, a Venetian lady, who having disoblged her family by marrying a Florentine banker, was reduced to maintain him by washing linen ; Francis the great duke, saw, fell in love with, and made her his mistress, and her husband his minister : but the latter, after numberless tyrannies, for which she obtained his pardon, and after repeated ill usage of her, for which she pardoned him, having murdered a man, and being again protected by her, the great duke told her, that though he would remit her husband's punishment, he would pardon whoever should kill him. The relations of the deceased murdered the assassin, and Francis married his widow Bianca, who was poisoned with him at a banquet by cardinal Ferdinand, afterwards called the Great, brother and successor of duke Francis.*

Jacob travelling from Laban ; very fine ; by Salvator Rosa : a present from the same.

The education of Jupiter ; by Nicolo Pouffin. This picture cost sir Robert Walpole an hundred and fourteen pounds.

A most beautiful landscape ; by Paul Brill.

A piece of rocks, with the temple of Tivoli ; by Gobbo Caracci.

A trunk of tortoisshell and bronze ; by Boul, on a frame of the same ; a small jar of Seve china under it.

A tea

A tea-table of old japan, with white china.
Two old japan coffers on gilt frames.

THE TRIBUNE.

IT is a square with a semicircular recess in the middle of each side, painted stone-colour with gilt ornaments, and with windows and niches, the latter taken from those on the sides of the north door of the great church at saint Albans; the roof, which is taken from the chapter-house at York, is terminated by a star of yellow glass that throws a golden-gloom all over the room, and with the painted windows gives it the solemn air of a rich chapel. The windows contain a head of Christ and two apostles, one in the middle of each, set round with four histories, all old, but finely recoloured by Price, and surrounded with most beautiful mosaics of the purest taste. In five of the niches, on pedestals, are,

1. A cast in plaister bronzed of Catharine lady Walpole, the model of her statue in Westminster-abbey, executed at Rome by Valory, and taken from the Livia or Pudicitia in the villa Mattei. 2. The Venus of Medici. 3. Antinous. 4. The Apollo Belvedere. 5. The Farnese Flora in bronze. In the windows, six smaller bronzes from ancient statues; a Chinese incense-box of bronze; and two pots pourri of red japan set in or moulu and surmounted with Indian figures by
Martin.

Martin. The carpet is taken from the mosaic of the windows, and in the middle has the reflection from the star in the cieling. The grated door was designed by Mr. Thomas Pitt.

On the right hand stands an altar of black and gold, with a marble slab of the same colours, taken from the tomb of two children of Edward 3d. in Westminster-abbey. On the altar, a Florentine box inlaid with hard stones, a present from sir Horace Mann: two most beautiful vases in paste, imitating root of amethyst and ornamented with vines and heads of goats, by Germaine of Paris: a silver dish of basket-work, and two candlesticks of German agate, presents from general H. S. Conway. On the sides, two silver sconces with the arms of Frances Pelham * viscountess Castlecomer; and two vases of ivory from the antique, carved by Verfkovis. Over the altar,

A cabinet of rose-wood, designed by Mr. Walpole; on the pediment, statues in ivory of Fiamingo, Inigo Jones, and Palladio, by Verfkovis, after the models of Rysbrach. In the pediment, Mr. Walpole's arms, a cupid and lion, by the same: on the doors, bas-reliefs in ivory, Herodias with the head of the baptist, by Gibbons; a lady, half-length, by the same; Perseus and Andromeda; the Hercules Farnese; the

X

the

* Sister of Thomas duke of Newcastle; she died, and is buried at Twickenham.

the Flora; Diomedes with the Palladium; the Medusa of Strozzi; the Perseus of ditto; Caracalla and Alexander, by Pozzo; and eight other heads. On the drawer, the Barberini lion, by Pozzo; and heads of eagles, by Verfkovis.

Within the cabinet of enamels and miniatures:

The virgin and child, in miniature, round; by old Lens, from the original by Annibal Caracci, at Kensington.

Head of Christ; by Carlo Dolce; in a rich frame of silver gilt and silver cherubim.

Venus, Cupid, and other figures in enamel; by Boit, from the original by Luca Giordano, at Devonshire-house.

Ethelreda Harrison, wife of Charles viscount Townshend; a capital piece of enamel, by Zincke, after Vanloo; set in a frame of enamel flowers in relief: on the back, her arms supported by Cupids, enamelled by Groth.

A fine old enamelled watch-case, after Raphael and Dominichino.

Emperor Joseph 1st. small.

Colonel Horatio Walpole, uncle of sir Robert Walpole; small.

The duchesses of Cleveland and Portsmouth; very small.

Sir Edward Walpole, father of Maria duchess of Gloucester, in enamel; by Zincke.

Galfridus Walpole, youngest brother of sir Robert Walpole; in water-colours.

Byzas,

Byzas, imaginary founder of Byzantium; large intaglia on onyx. M.*

A valuable jewel of lord Burlington's head on onyx, by Valerio Vicentino, cut on the reverse of an antique of Caracalla; appendent is the head of queen Elizabeth, cut likewise on sardonix, by the same Vicentino; the whole set with 53 brilliants: given to Mr. Walpole by his father, who bought it of sir Andrew Fountain, who had it set on purpose, with allusion to queen Caroline and sir Robert Walpole.

Sir Robert Walpole, earl of Orford; very like; painted in enamel by Zincke, two years before sir Robert's death: set in a frame of enamelled oak-leaves.

Catharine Shorter, first wife of sir Robert Walpole; ditto, after sir Godfrey Kneller: set with enamel flowers. The two heads are in Zincke's best manner, and were engraved for the *Ædes Walpolianæ*.

Mary Walpole, second daughter of sir Robert Walpole and Catharine Shorter, and wife of George Cholmondeley viscount Malpas, afterwards earl of Cholmondeley; in water-colours; by Groth, after Jarvis.

Lady Maria Walpole, only child of sir Robert Walpole and Maria Skerret his second wife, married to Charles Churchill, esq; in enamel; by Zincke.

Horace

* All the curiosities marked M. belonged to Dr. Conyers Middleton, whose whole collection Mr. Walpole bought. See an account of them in the doctor's *Germana quædam Antiquitatis Monumenta*,

Horace Walpole, [who made the collection] youngest son of sir R. Walpole and Catharine Shorter; ditto.

Horatio Walpole, lord Walpole, brother of sir Robert; in enamel; by Groth, after Vanloo.

Two lockets in shape of hearts, with hair of sir Robert Walpole and Catharine Shorter, set with diamonds.

An Egyptian duck; antique cameo, on agate. M.

A sleeping hermaphrodite with two satyrs; ditto; very fine. M.

Sir Anthony Shirley, embassador *from* the sophy of Persia to king James 1st. dress, half English half Persian; by Isaac Oliver.

The queen of Bohemia; by Isaac Oliver: bought out of the collection of lady Isabella Scott, daughter of the duchess of Monmouth.

Serjeant Maynard; by Hoskins: given to sir R. Walpole by sir Everard Falkener.

Sir Kenelm Digby; by Peter Oliver: it was in doctor Meade's collection.

James the 1st. by Isaac Oliver.

Charles 1st. by Petitot: fine.

Charles 2d. ditto; in a case enamelled blue; done abroad: bought of an old gentlewoman, to whom he gave it when he stood godfather to her in Holland.

James 2d. when duke of York; fine, by Petitot: bought
at

at the sale of Mrs. Dunch, daughter of his mistress, Mrs. Godfrey.

Robert Cecil earl of Salisbury; by Isaac Oliver.

A lady's head, in enamel; by Petitot.

Nicholas Burwell, brother of sir Jeffery Burwell, grandfather of sir Robert Walpole; by Hoskins: set in a case with small diamonds, and enamelled with the judgment of Paris in relief, very neat.

Mrs. Godfrey, mistress of king James, in enamel; by Petitot: was Mrs. Dunch's.

Robert Devereux earl of Essex; by Isaac Oliver: it belonged to Frances lady Worfeley, who was descended from him. It was engraved for the Illustrious Heads.

Frances, his wife, daughter of sir Francis Walsingham, widow of sir Philip Sydney, and lastly wife of the earl of Clanrickard and saint Albans.

Robert Walpole, second earl of Orford; painted in water-colours by Rosalba with all the force of oil.

An elderly lady's head; by Cooper: fine.

Robert Carr earl of Somerset, in his latter time, favourite of king James; by Hoskins: bought at the sale of the curious collection of T. Barrett of Lees in Kent, 1758.

Richard Cromwell, protector, in armour; by Cooper: from the same collection.

Marivaux, author of Marianne; by Liotard, in water-colours.

George Walpole, third earl of Orford; ditto.

John Chute, esq; of the Vine in Hampshire; finely painted in water-colours, by Pompeo Battoni, at Rome.

A watch enamelled with histories, after Pietro Cortona.

Another enamelled watch.

Admiral Churchill, brother of John duke of Marlborough; very finely enamelled by Boit: it belonged to his neice, Mrs. Dunch.

A curious antique miniature in gold, of a Roman lady and her son; the boy has a bulla at his neck. M.

Lady Arabella Stuart; by Hilliard: it was lord Wilmington's.

Queen Elizabeth; ditto: ditto.

George the 2d. by Mr. Deacon.

Cowley, the poet, after sir Peter Lely; by Zincke; his master-piece, and perhaps the finest piece of enamel in the world. It was engraved for Mr. Hurd's edition of Cowley.

A lady, said to be Henrietta duchess of Orleans, but probably Martinozzi, princess of Conti: one of the finest works of Petitot. A looking-glass behind it: bought of Zincke.

Bianca Capello, great duchess of Tuscany; a small head in oil, by Bronzino. *See her history, p. 75.*

Louis 14th: Mary of Austria, his queen: Anne of Austria, his mother, very delicate: madame de Montespan, his mistress, beautiful. These four are small heads in enamel, by Petitot.

Mrs.

Mrs. Middleton, a beauty in the reign of Charles 2d. ditto. Duchesse of Mazarin, in water-colours.

Constant Hayes, wife of Galfridus Walpole, and afterwards of Mr. Kerwood; very small.

Katharine duchess of Buckingham, daughter of James 2d. in enamel; by Zincke: given to Mr. Walpole by her neice madame de Bouzols, daughter of marshal Berwick.

A silver gilt heart; within, the arms of sir Robert and Catharine lady Walpole, his first present to her on their marriage.

Anne Boleyn; copied by Wale from a portrait of her by Hoskins, which he did from an ancient picture of her for king Charles 1st. and which is mentioned in his catalogue with other royal miniatures in the same frame; all which are now in the possession of the duke of Richmond.

Catharine Parr; by Holbein: a most scarce head, and exactly like the picture of her at the earl of Denbigh's at Nuneham Padox, Warwickshire.

A girl with flowers, in water-colours; by Rosalba.

Oliver Cromwell; by Boit, after Cooper: given to Mr. Walpole by his brother lord Orford.

John Dodd, of Swallowfield, Bucks. by Rouquet.

Catharine Clopton, wife of Henry Talbot, and cousin of Catharine lady Walpole; by Zincke.

Jane Seymour; by Holbein, in water-colours: was lady Worfeley's.

Peter

Peter Oliver, profile in black lead, from a leaf of his own pocket-book, and his wife, full-faced, on the other side; both fine: it belonged to Vertue the engraver.

Lucius Carey, the famous lord Falkland; by Hoskins; fine: it was doctor Meade's.

Doctor Bragge, a dealer in pictures; by Mr. J. Deacon.

A Calcedonian stone, antique, used as an ornament to a horse of a triumphal chariot. M.

Another stone; described in *Germana quædam*. M.

On the insides of the doors:

Thomas Howard duke of Norfolk, beheaded temp. Elizabeth; by Antonio More: belonged to Richardson the painter, and engraved amongst the *Illustrious Heads*.

A lady, painted by Holbein; engraved by Holliar when in the Arundelian collection, and probably Mary Tudor queen of France, sister of Henry 8th. but amongst the *Illustrious Heads* called Catharine Howard. This also was Richardson's.

Lucy Barlow, alias Waters, mother of the duke of Monmouth; by Cooper.

Countess of Dorset; by Dixon.

Catharine of Arragon, first wife of Henry 8th. an admirable original; by Holbein. These three were bought at the auction of lady Isabella Scott.

Isaac Oliver; by himself: perfectly fine.

Waller, the poet; by Cooper. And a lord Digby; ditto. These three from the collection of Mr. Barrett of Lees.

Liotard

Liotard, the painter, in his Turkish dress, in enamel; by himself: given to Mr. Walpole by his sister lady Mary Churchill.

Salmacis and Hermaphroditus, a most beautiful miniature by Clinksted; given to Mr. Walpole by Mr. Chute: set in a gold frame enamelled blue.

A naked Venus, whole length, and very fine; copied by Zincke from a picture of Annibal Caracci in the collection at Houghton: set in a frame like the former.

[End of the cabinet of enamels and miniatures.]

Other pictures and curiosities in the same room:

Little children presented to Christ; Italian, on copper.

The virgin, child, and faint John; Baroccio, after Correggio.

The virgin and Child; by Carlo Cignani: from lord Cholmondeley's collection.

Head of a cardinal, and an old man's head; rounds, on fayence.

A fine dish, enamelled on copper, with the history of Moses. P. R. 1557.

A fayence dish, painted in grotesque.

Rembrandt; by old Lens.

Lady Mary Wortley Montagu, as a shepherdes; after Jarvis, by ditto.

Two vases carved in ivory, by Verfkovis, after the antique.

Queen Anne of Denmark, and a lady of the same time; by Isaac Oliver: in one frame.

Louis 12th. of France, and sir John Gage; by Holbein: in another frame. These four from the collection of lady Elizabeth Germaine.

Margaret of Austria, daughter of Charles 5th. in a white religious habit; enamelled on copper, in a round: behind it, Moses receiving the law; enamelled on gold.

Henry d'Albret, king of Navarre, grandfather of Henry 4th. in enamel. These two were presents to Mr. Walpole from Miss Rachael Loyd, and belonged to the princess Sophia, mother of king George 1st.

In the glass-case near the window:

A chalice of silver gilt, richly ornamented with figures, jewels, and chrystal.

Model of the shrine of Thomas Becket, enamelled.

An amber jewel box.

Great seal of Theodore king of Corfica.

That very curious piece by which he took the benefit of the act of insolvency: he is only stiled, Theodore Stephen baron de Newhoff.

His capitulations made with the people of Corfica, on his election, signed by his own hand.

An antique figure of the deity of gardens; fine.

Two phalli, a fibula, two sacrificing instruments; and a small eagle; all of bronze. M.

Gold

- Gold medal of Maximilian, with a chain enamelled.
- A cross of cedar inlaid with mother of pearl.
- A small gold watch, given by George 2d. when prince of Wales to Catharine lady Walpole.
- A coffer enamelled on all sides with battles, and set in silver gilt.
- Two candle-cups, with flowers on gold grounds, of Chelsea porcelaine.
- A red snuff-box, with enamelled top and bottom; given to Mr. W. by Francis earl of Hertford.
- A square snuff-box of lapis lazuli, set in gold.
- A round snuff-box of ditto, set in gold enamelled.
- A small bust of Vespasian in cornelian.
- An agate cup and saucer.
- A small cornelian saucer.
- Two antique Roman ear-rings, one with a pearl, the other of gold. M.
- A box in compartments of old japan.
- A small bust in bronze of Caligula, with silver eyes. This exquisite piece is one of the finest things in the collection, and shews the great art of the ancients. It is evidently a portrait, carefully done, and seems to represent that emperor at the beginning of his madness. It was found with some other small busts at the very first discovery of Herculaneum, which happened by digging a well for the prince d'Elbœuf, who

who resided many years afterwards at Florence, where it was sold on his return to France, and being purchased by Sir Horace Mann, was by him sent to Mr. Walpole.

A broken patera engraved. M.

A sacrificing instrument in the shape of a shell. M.

A Roman bulla of gold, very rare: bought at Rome of Ficaroni, who wrote his book of *La Bolla d'oro* from this.

A lady's head, miniature, set in gold: given to Mr. Walpole by Isabella de Jonghe, countess of Denbigh.

A chrystal sceptre, set in gold enamelled, with pearls; from lady E. Germaine's collection, and given to Mr. Walpole by her niece lady Temple.

A cup and saucer of Sevres china, blue ground with white heads and festoons.

A dressing-box and tray of the finest old silver japan.

Two candle-cups of Chelsea china, claret colour and gold.

A magnificent missal, with miniatures by Raphael and his scholars, set in gold enamelled, and adorned with rubies and turquoises; the sides are of cornelian, engraved with religious subjects; the clasp, a large garnet. This precious prayer-book belonged to Claude queen of France, wife of Francis 1st. and seems to have belonged to the father of Thuanus; *vide vol. 1, p. 142, of the French edition.* It was purchased by Mr. Walpole from the collection of doctor Meade, 1755.

A round

A round snuff-box, enamelled with the stories of Joseph and Potiphar's wife, Sufannah and the elders, Lot and his daughters, and a landscape.

A gold snuff-box, enamelled: at top, a miniature of James 1st. and within, of queen Elizabeth; an onyx at bottom.

A small snuff-box set in gold, with a fragment of a fine antique cameo in grotesque foliage on sardonix; from the Arundelian collection.

A needle-case, with monkies, of old japan.

Two boxes in compartments, ditto.

Two small ewers of bronze. M.

A tea-kettle of Chinese silver, richly chased.

An agate oval casket.

Henry 8th's. dagger, of Turkish work; the blade is of steel damasked with gold, the case and handle of chalcedony, set with diamonds and many rubies. From the collection of lady Elizabeth Germaine. The duchess of Portland has such another set with jacinths.

Antique figure of a muse cast in silver; fitting: given to Mr. Walpole by lord Frederic Campbell, from the collection of his father John duke of Argyll.

Four small japan boxes.

A boy's head modelled in wax on copper, by Abraham Simon.

A ditto with a bulla, in Roman glass.

A a

A large

A large amethyst, set coarsely in gold. It belonged to the second bishop of Landaff, and was given by doctor John Ewer bishop of Landaff, in whose time * it was found, to doctor Frederic Keppel bishop of Exeter, and by him to his wife's uncle Mr. Walpole.

One of the only seven mourning rings given at the burial of Charles 1st. It has the king's head in miniature; behind, a death's head between the letters C. R. The motto, *Prepared be to follow me.* A present to Mr. Walpole from lady Murray Elliot.

An urn, cameo on onyx, mourning ring for Henrietta Hobart countess of Suffolk.

An urn set with diamonds, mourning ring for Arthur Onslow, speaker of the house of commons.

A chimera, antique intaglia, a green stone in the ancient brass setting.

A small antique ring with the head of Cybele, all of one piece of gold.

A gold ring for a child with a phallus; ditto.

A boy with his head in a scenic mask, on a red stone; antique, set in gold.

An Egyptian pebble representing exactly the portrait of a woman in profile, a rock behind her, sky before; set in gold.

Two

* Anno 1764.

Two pateras of bronze, engraved. M.

Ivory covers of a Roman pocket-book. M.

A fibula, a small votive foot, an agate ornament for a bridle, and some other small bronzes. M.

In the other glass case :

A leaf of a water-plant, gracefully tied up into the shape of a cup, with a faucer, of Chinese bronze.

Two vases of Chelsea porcelaine, claret colour, gold and white, with cartouches of historic figures.

Two long japan boxes

Two Roman spears, a votive foot and toe.

A point cravat carved by Gibbons.

An old enamelled watch, given by Mr. Ch. Churchill, junior.

A silver gilt reliquaire and chain; given to Mr. Walpole by George lord Edgcumbe.

An Etruscan Mars; very barbarous.

A small Egyptian figure sitting, of bifaltes. M.

A naked man. M.

The seal of archbishop Dowdall, last popish primate of Ireland; in silver.

Two cups and a faucer of Milan stone.

Two caudle-cups of Chelsea porcelaine, blue with gold figures.

A japan pomatum-pot.

A small

A small bloodstone cup set in gold enamelled.

A small cornelian box set in gold.

A triangular cornelian seal, with the heads of the two Faustinas and Lucilla, intaglias; by Christian Reifin.

A silver seal, extremely ancient, of Hugh Oneal, king of Ulster; brought out of Ireland by Mr. William Bristow.

A large ancient gold ring, with a castle on it, and within, *Un bon An*: found in the Thames.

A cornelian seal, with half figure of Omphale; antique intaglia. M.

Seal of Richard Clitherol, admiral for the west coasts in the reign of Henry 5th.

Seal for indulgences of pope Eugenius.

Seal of the corporation of Pool.

Seal of the fraternity of saint Mary of Hitchin. These four are of bronze and ancient.

A spoon of English pebble, with gold handle of foliage.

A silver bottle for essences, that opens into several divisions.

A small bust of Omphale in bronze.

A round flat box of silver filigree.

A toothpick-case of Egyptian pebble, and a smelling-bottle of agate.

A set of beads mounted in silver filigree, taken in Spain in queen Anne's war by captain Galfridus Walpole, brother of sir Robert.

A silver

A silver popish medal mounted in philigree.

A cup and saucer of Sevres porcelaine, blue with white heads.

A dressing-box and tray of fine old gold japan.

A tea-canister of straw; on one side Meleager and Atalanta, on the other the arms of Sir Robert Walpole and Catharine Shorter.

A japan dressing-box and tray of irregular shape.

Ditto, octagon, with tray and six round boxes within.

A Pollux, small fine antique bronze. M.

A small Terminus. M.

A round white snuff-box; on the top, miniature of madame de Sevigné; at bottom, the cypher of Rabutin and Sevigné in marcasites. This box, with the letter * in it from madame de Sevigné in the Elysian fields to Mr. Walpole, was sent to him by madame du Deffand.

B b

A blood-

* Letter written by madame Marie de Vichy, marquise du Deffand [the lady to whom Mr. W. afterwards dedicated his edition of the Memoires de Grammont] in the name of madame de Sevigné from the Elysian fields to Mr. Walpole, after his return from Paris in 1766.

“ Des champs Elisées; point de succession de tems, point de datte.

Je connois votre folle passion pour moi; votre enthousiasme pour mes lettres, votre veneration pour les lieux que j'ai habités: J'ai appris le culte que vous m'y † avez rendu: j'en suis si penetrée, que j'ai sollicité & obtenu la permission de mes Souverains de vous venir trouver pour ne vous quitter jamais. J'abandonne sans regret ces lieux fortunés; je vous prefere à tous ses habitans; jouissez

† He had dined at Livry.

A bloodstone seal set in old enamel, given to Mr. Walpole by Mrs. Henrietta Conway, daughter of Francis lord Conway.

A smelling-bottle of purple glass with peacocks feathers in gold.

Ditto of Chinese silver.

A small amber crucifix.

A small bronze figure of a woman with a rudder and cornucopia.

Model of the great duke's diamond.

In the box of antique rings :

Tiberius, cameo on onyx, of the first Greek workmanship.

Cupid driving a car with two butterflies ; intaglia on cornelian.

A man's

jouissez du plaisir de me voir ; ne vous plaignez point que ce ne soit qu'en peinture ; c'est la seule existence que puissent avoir les ombres. J'ai été maitresse de choisir l'age ou je voulois reparoitre ; j'ai pris celui de vingt cinq ans pour m'affurer d'etre toujours pour Vous un objet agreable. Ne craignez aucun changement ; c'est un singulier avantage des ombres ; quoique legeres, elles sont immuables. J'ai pris la plus petite figure qu'il m'a été possible pour n'etre jamais separée de Vous. Je veux vous accompagner par tout, sur terre, sur mer, à la ville, aux champs ; mais ce que j'exige de vous, c'est de me mener incessamment en France, de me faire revoir ma patrie, la ville de Paris, et de choisir pour votre habitation le fauxbourg St. Germain ; c'etoit là qu'habitoient mes meilleures Amies, c'est le sejour des votres ; vous me ferez faire connoissance avec elles : je serai bien aise de juger si elles sont dignes de vous, & d'etre les Rivaies de

RABUTIN DE SEVIGNE."

A man's head ; alto relievo on onyx.

An Egyptian goddess's head on a green stone. M.

A cock and cornucopia ; intaglia on cornelian.

A bacchante and goat ; fine cameo on onyx : given to Mr. Walpole by the princess de Craon.

Germanicus ; very fine intaglia on cornelian, with the workman's name Epitu, for Epitynchanes : from the collection of the marquis Riccardi at Florence.

Head of Jupiter ; ditto : from ditto.

A scenic mask ; cameo on onyx.

Caius, nephew of Augustus ; ditto.

A lion ; intaglia on sardonix.

A caprice, on white cornelian ; intaglia. M.

Apollo ; intaglia on cornelian.

Isis ; Egyptian cameo on onyx. M.

A Cicada ; fine intaglia on cornelian.

A Syrian king ; ditto. M.

• Faustina, senior ; ditto.

Christian inscription ; *Vitas Luxuriam, Homo bone* : cameo on onyx.

Matidia ; intaglia in a green paste : a most rare head. M.

The Horatii ; intaglia on cornelian : given by sir Robert Walpole to his son Horatio.

Mercury ; intaglia in amethyst : given to Mr. Walpole by general Conway.

Jupiter

Jupiter Serapis; altissimo relievo in bloodstone.

A ram's head; intaglia on cornelian. [*End of the rings.*

Old japan plate of different colours.

Popish beads, bought at the church of faint Anthony of Padua.

Turkish beads enamelled with blue and gold; probably for ornaments in a proceffion: bought at the fale of monsieur Julienne, at Paris.

A small wooden cros, curiously carved.

A most beautiful silver bell, made for a pope by Benvenuto Cellini. It is covered all over in the highest relievo with antique masks, flies, grafshoppers, and other insects; the virgin and boy-angels at top, a wreathe of leaves at bottom. Nothing can exceed the taste of the whole design, or the delicate and natural representation of the insects: the wonderful execution makes almost every thing credible that He says of himself in his Life. It came out of the collection of the marquis Leonati at Parma, and was bought by the marquis of Rockingham, who exchanged it with Mr. Walpole for some very scarce Roman medals of great bronze, amongst which was an unique medaliuncino of Alexander Severus with the amphitheatre, in the highest preservation.

Two Cornish diamonds, one inclosing green, the other yellow mofs.

A bronze altar-pot and a tripod. M.

A large

A large Goa stone.

A silver box, almost in the shape of an egg, engraved.

A small box of the gold and white japan. In it are two dates found in a jar at Herculaneum; they are burnt to a coal, but the shapes and rivelled skins are entire.

A cornelian spoon that belonged to Cossim Aly Caun.

An amber toothpick-case.

A tortoiseshell snuff-box, the top represents Flemish lace; given to Mr. Walpole by lady Mary Coke.

A round snuff-box, and an egg-shaped ditto.

Pictures and bronzes in the other parts of the Tribune.

Side opposite to the door :

A drawing by Mr. Bentley, representing two lovers in a church looking at the tombs of Abelard and Eloisa, from these lines of Pope,

If ever chance two wand'ring lovers brings

To Paraclete's white walls and silver springs, &c.

Christ and Mary Magdalen in the garden, in water-colours; by Catharine lady Walpole.

Two flower-pieces; by Baptiste Monoyer.

Christ laid in the sepulchre, after the fine picture of Parmegiano at Houghton; by Mr. Horace Walpole.

Two more flower-pieces; by Baptiste Monoyer.

Madonna and child; by Salsa Ferrata, after Guido.

Correggio's Magdalen copied in crayons by Rosalba.

Temptation of saint Antony ; by Teniers.

Story of Celadon and Aftrea, in water-colours ; by W. Baur.

St. George in altissimo rilievo in filver.

Frances Howard, the famous countefs of Effex and Somersfet ; by Ifaac Oliver : from Mr. Weft's collection.

A beautiful bronze vafe taken from the antique by Fiamingo, who has added fine bas-reliefs of boys : from the Harleian collection.

A young gladiator in bronze. M.

A young Hercules, ditto, with the lion's fkin on his arm ; fine. M.

An antique ewer of bronze ; a greyhound reaching to drink forms the handle : a present from Charles Churchill, efquire.

A very rare figure of Diana of Ephesus, in ferpentine ftone.

A green Egyptian figure, one of thofe found in the pyramids.

Pictures and bronzes on the fide where the altar is :

A man and woman fitting ; by Watteau : from fir Robert Walpole's collection.*

Thompson, printfeller ; by Riley.

An oval hunting-piece ; by Wyck.

Mary

* All the pictures that were not at Houghton were fold after his death.

Mary queen of Scots, whole length in water-colours ; by Vertue, from the picture at Hatfield.

A merry-making ; very neat ; by a Swiss lady.

A rural ball ; ditto.

A wreath of flowers ; octagon ; by Phil. Laura : in the middle, head of Rosalba's Tirolese girl, by Carlevaris, a female scholar of Rosalba.

Cornelius Polemberg, by himself, oval on copper ; exquisitely finished like enamel, yet with great freedom.

His wife, by ditto ; inferior in freedom and labour. These two from sir Robert Walpole's collection.

St. Sebastian ; by Goltzius.

An old woman's head ; by Gerard Dow.

Boys with vines on a monument ; from sir Robert Walpole's collection.

Christ as a pilgrim, and saint Catharine, crowned by an angel ; by Taddeo Zuccherro.

A calm sea with ships ; by Samuel Scott.

The engagement between the Lion and Elizabeth in the year 1745 ; the young pretender was on board the latter : by Samuel Scott.

The Florentine boar, in bronze.

A small bronze vase, with a sacrifice to Priapus.

A larger, ditto. These two from Dr. Meade's collection.

A bronze bull.

An Egyptian hieroglyphic hand; bronze.

A sphinx; ditto. M.

Pictures and bronzes on the side opposite to the altar:

A dog drinking; by Castiglione.

Two more flower-pieces; by Baptiste Monoyer.

Two larger; by young Baptiste.

Charlotte de la Tremouille, grand-daughter of William the great prince of Orange, and wife of James Stanley earl of Derby, who was beheaded in the civil war: she defended Latham-house for several weeks against the republicans.

The virgin and child, with other saints; a capital drawing by Parmegiano.

Ulysses discovering Achilles among the daughters of Lycomedes; by Wermer, in water-colours, after Nicolo Pouffin. The architecture is most beautiful, and in the roof Pouffin has judiciously introduced an ancient bas-relief with the judgment of Paris, as connected with the story of Achilles.

Madame Suarez, a Florentine beauty; in crayons, by Rosalba.

Madame de Sevigné, when a young widow.

Madame de Grignan. These two are ovals on copper, by Muntz.

A woman carrying a pig to be sacrificed; bronze. M.

A lamp with a satyr's head; ditto: copied from the antique.

An antique lamp, of bronze, with a face.

Sketch of the head of Roger Palmer earl of Castlemaine, husband of the duchess of Cleveland; by sir Godfrey Kneller.

Christ deposited in the sepulchre; by Mola, after Raphael.

Christ praying in the garden; by Philippo Laura: from the collection of monsieur Julienne.

Margaret Cecil lady Brown, in crayons; by Rosalba.

Madame de la Fayette, on copper; by Muntz.

Lady Mary Coke, in wax; by Goffet.

Raphael's Jonas, in ivory.

A beautiful lamp, in the shape of a foot, Cupid fallen asleep over the flame; antique bronze with silver ornaments: it was found in the temple of Cupid, is published by Montfaucon, and was bought at the sale of the Harleian collection.

Another bronze lamp.

Pictures and bronzes on the door side:

A landscape; by Muntz.

Two hermits; after Rubens.

Two flower-pieces; by young Baptiste.

A Dutch surgeon dressing a boor's leg; from sir Robert Walpole's collection.

The circumcision; by Ludovico Caracci, on copper: a design for an altar-piece which he executed at Bologna.

A farm yard; most natural.

Young Hercules with the serpents; by Annibal Caracci.

St. George; painted by Gioseppe d'Arpino on lapis lazuli.

Sir Godfrey Kneller, when young; by himself: great spirit. These four last from sir Robert Walpole's collection.

A Roman emperor in bronze, as an idol, with thunderbolt and caduceus. M.

Two Roman lamps of bronze; one Christian, of the latter empire.

Sir Peter Lely, in crayons; by himself.

The virgin and child in the clouds, the city of Bologna beneath; by Goupy, after Annibal Caracci.

A drunken boor; by Brauwer.

Head of an abbé; by Teniers: from the collection of monsieur Hareng.

Bust of an emperor, in black marble.

A bagpiper; bronze. M.

A sacrificing priest; ditto. M.

N. B. All the bronzes, lamps, &c. stand on brackets under the pictures.

THE GREAT NORTH BEDCHAMBER,

IS hung with crimson Norwich damask. The bed is of tapestry of Aubusson, festoons of flowers on a white ground, lined with crimson silk; plumes of ostrich feathers at the corners. Six elbow chairs of the same tapestry, with
white

white and gold frames; and six ebony chairs. A carpet and foot carpet of the manufacture of Moorfields.

The chimney was designed by Mr. Walpole from the tomb of W. Dudley bishop of Durham, in Westminster-abbey, and is of Portland stone, gilt; with dogs of or moulu with arms and trophies; the chimney-back is ancient, and bears the arms of Henry 7th.

Over the chimney, a large picture of Henry 8th. and his children; bought out of the collection of James West, esq; in 1773. *See a description of this curious piece in the first vol. of the Anecdotes of Painting.* On the chimney,

A bust of Francis 2d. king of France, husband of Mary queen of Scots.

A bronze bas-relief in profile of Anne of Bretagne, queen of Charles 8th. and of Louis 12th. These two heads from the collection of the count de Caylus.

A nautilus mounted in silver gilt, with satyrs and the arms of Paston.

A crystal tankard and cover, mounted in silver gilt. These two pieces belonged to the last earl of Yarmouth.

Four old blue and white china bottles.

On one side of the chimney, A fine whole length, by Vandyck, of Margaret Smith, wife of Thomas Carye, groom of the bedchamber to Charles 1st. From the Wharton collection, afterwards in that of sir Robert Walpole.

On

On the other side, Philip Herbert earl of Pembroke and Montgomery, (with a view of old Wilton) whole length; by Mytens.

On one side of the bed, A whole length of Henry Vere earl of Oxford, in his robes. He was made knight of the bath at the creation of Henry prince of Wales, and died in Flanders in 1625.

On the other side, Robert Walpole, 2d. earl of Orford; whole length, in robes of the Bath; by Vanloo.

On the side opposite to the bed:

Head of Niobe; by Guido.

Two views of Venice; by Marieski.

A fine landscape with cattle; by Gaspar Pouffin.

The duchesse de la Valiere, mistress of Louis 14th.

Mademoiselle Hamilton, comtesse de Grammont; copy after Lely, by Eckardt.

Ninon L'Enclos, the only original picture of her; given by herself to the countess of Sandwich, daughter of Wilmot earl of Rochester, and by her grandson John earl of Sandwich to Mr. Walpole.

Richard 1st. prisoner to the archduke of Austria; highly finished, by Mieris.

The presentation in the temple; its companion; by Rembrandt.

Over

Over the the doors, which were designed by Mr. Chute, and have medallions of Louis 14th. and Charles 5th. in bronze,

Madame de Maintenon ; and Hortense Mancini duchess of Mazarin : the latter a copy from Carlo Maratti.

A small japan cabinet ; a dejuné of Seve china, blue and white with coloured birds ; and a blue and white old china jar.

On the window side :

A large looking-glass in a rich ebony frame ; and two bronze arms with masks, for candles.

Over the glass, Henry 8th. aged 29, and Charles 5th. aged 20, in one picture ; from Mr. West's collection.

A table of Saracen mosaic, sent to Mr. Walpole from Rome by sir W. Hamilton, mounted on an ebony frame, with two ebony stands.

An ewer and two beakers, of Roman fayence ; a present to Mr. Walpole from miss Speed, afterwards married to the comte de Virri, minister from Turin.

A small table with a landscape of Seve porcelaine, mounted in old japan ; a legacy to Mr. Walpole from Mary lady Hervey.

Richard Wellborn, master of requests temp. Henry 8th. He was descended from a younger son of Simon de Montford earl of Leicester, on whose death, to secure himself,

he changed his name to Wellborn: a present from the earl of Exeter.

A woman's head in crayons, after Guido.

Sir John Perrot, lord deputy of Ireland in the time of queen Elizabeth; in black and white chalk, by Chambars, from the original at sir Herbert Perrot Packington's.

The original sketch of the Beggar's Opera: Walker, as Macheath; miss Fenton, afterwards duchess of Bolton, as Polly; Hippisley, as Peach'em; Hall, as Locket: on one side in a box, sir Thomas Robinson, very tall and lean; sir Robert Fagg, a famous horse-racer, fat, with short grey hair: by Hogarth. Bought at the sale of John Rich, the well known harlequin, and master of the theatres in Lincoln's-inn-fields and Covent-garden, for whom the picture was painted.

Van Helmont, the chymist; copied by Muntz from a fine original by sir Peter Lely, at the earl of Hertford's at Ragley.

Lady Henrietta Berkeley, sister-in-law and mistress of Ford lord Grey in the reign of Charles 2d.

Mary princess of Orange, daughter of king Charles 1st. given to Mr. Walpole by the prince of Monaco.

Rehearsal of an opera, with caricatures of the principal performers: Nicolini stands in front, Mrs. Toft is at the harpsichord, Margarita is entering in black. Bought at the sale

sale of John duke of Argyll, who bought it at that of Charles Stanhope, esq.

In the bow windows are ten coats of arms in painted glass, by Peckitt of York, with the principal matches of the family of Walpole.

The cieling was copied from one at the Vine in Hampshire.

Curiosities in the glass closet in the great bedchamber :

A salver of Raphael fayence; story of the prodigal son.

A large dish ; ditto, story of Absalom.

One ditto, smaller ; story of Jael and Sisera.

A large plate, ditto ; feast of the gods.

One smaller ; Christ walking on the water.

One ditto ; Cupids in relievo ; ribbed border.

Ditto ; Apollo and Marsyas ; scolloped border.

Two small ditto ; with landscapes and buildings.

Two ditto, twelve square ; very coarse.

Two ten square dishes of the old dragon china.

A fine silver trunk to hold perfumes, with bas-reliefs ; the top from Raphael's judgment of Paris : the work of Benvenuto Cellini. Bought out of the great duke's wardrobe ; a present from sir Horace Mann.

A Chinese steelyard.

An amber standing cup and cover.

A bottle of purple glass. * This and all the following articles marked with an asterism, were bought at the sale of count Caylus at Paris.

Seven boxes of the old gold and white japan, with smaller boxes of the same within.

A silver gilt plate in relievo, the meeting of Charles 5th. and Francis 1st. A present from sir William Hamilton.

A pair of gloves worn by king James the 1st. bought out of Thoresby's museum.

The wedding gloves of Mrs. Hampden, wife of the celebrated John Hampden.

An agate puncheon with the arms of Mr. Gray the poet, and a Goa stone; given to Mr. Walpole by doctor Browne and Mr. W. Mason, Mr. Gray's executors.

A carved bottle for perfumes, mounted in silver; Indian.

A bronze perfume-pot.

A clouded ewer of polished earth. *

An ewer of Villeroy ware.

Three packs of Florentine cards, for playing at Minchiati and Tarocco.

Rubens's child, in biscuit china of Nancy.

Three French snuff-boxes mounted in gold.

A small ivory box, containing a suite of prints representing medals on the victories in the war at the end of the reign of George 2d.

A snuff-box with views of Spa; given by miss Churchill.

Two enamel plates, presents from Caroline lady Greenwich.

A silver

A silver gilt apostle-spoon. Addison, in the Drummer, mentions apostle-spoons; and so do Beaumont and Fletcher, in one of their plays. It was an ancient fashion to have a little figure at the end of a spoon's handle, as this has. It was a present from the reverend Mr. W. Cole.

An antique bronze of a man, naked, the head of sir Robert Walpole added by Nattier.

A small octagon dish of old china with figures.

Nineteen draftsmen of box, with heads of German princes and princesses; a present from Charles duke of Richmond.

Two vases of blue china mounted in or moulu.

A blue and white plate with the brown edge, old china.

A smaller with dragons, without the border.

Two octagons of blue and white with figures, pierced.

Two hexagon saucers, ditto, with feet.

A box with ancient round trenchers, with scriptural mottoes; a present from the reverend Mr. W. Cole.

A German pitcher and cover, with bas-reliefs of figures dancing. *

Two plates of Chantilly china, of different sizes.

A tea-pot of the old red Japan ware.

Another, red and black, of China.

A Turkish mug, with characters. *

An earthen pot, Indian. *

A blue and white earthen barrel, with handles. *

A drinking vessel of black earth, with ditto. *

A saltfeller of old fayence supported by dolphins.

Two blue and white dishes and seven plates of old china; a legacy from Mrs. Henrietta Conway, sister of Francis earl of Hertford.

Two old blue and white water-plates.

A copper dish with a foot, enamelled with the story of Abraham and Melchizedec; a present from Geo. William Hervey, earl of Bristol.

A basket of Seve china, blue, gold, and white.

A Staffordshire Etruscan vase.

A blue vase of antique Roman glafs with a boy's head. *

Four water-plates of old coloured china.

An urn and cover of Volterra alabaster.

Two ewers of ancient glafs. *

A blue and white square pot for flowers, of old china.

A speculum of kennel-coal, in a leathern-case. It is curious for having been used to deceive the mob by Dr. Dee, the conjurer, in the reign of queen Elizabeth. It was in the collection of the Mordaunts earls of Peterborough, in whose catalogue it is called, *the black stone into which Dr. Dee used to call his spirits*. From the Mordaunts it passed to lady Elizabeth Germaine, and from her to John last duke of Argyll, whose son, lord Frederic Cambell, gave it to Mr. Walpole.

In the closet-window is a head of queen Elizabeth in painted glass, and another pane with men playing at cards, very old.

GREEN BEDCHAMBER IN THE ROUND
TOWER, TWO PAIR OF STAIRS.

THE inside of a church, a very good Flemish picture on board; a legacy to Mr. Walpole from doctor Meyrick of Isleworth.

Henrietta Hobart countess of Suffolk, fitting, a view of her house at Marble-hill, Twickenham; by Jarvis. It was Mr. Pope's; lady Suffolk bought it at Mrs. Martha Blount's sale, and gave it to Mr. Walpole.

Ogleby, the poet, in his shirt; fine, by Fuller: from sir Robert Walpole's collection.

Tillemans, the painter.

Mrs. Barry, the celebrated actress; profile, by sir Godfrey Kneller. Sketch for the head of Britannia in the great equestrian picture of king William at Hampton-court.

Henrietta duchess of Orleans, as Pallas; bought at lady Suffolk's sale.

The emperor Maximilian; a curious head.

Robert Dudley earl of Leicester.

THE

THE GREAT CLOYSTER.

AT each end, a blue and white china flower-pot, and in the middle, the tub ditto in which Mr. Walpole's cat was drowned; on a label of the pedestal is written the first stanza of Mr. Gray's beautiful ode on that occasion,

*'Twas on this lofty vase's side,
Where China's gayest art has dy'd
The azure flow'rs that blow,
Demurest of the tabby kind,
The pensive Selima reclin'd,
Gaz'd on the lake below.*

The piers of the garden-gates are of artificial stone, and taken from the tomb of William de Luda bishop of Ely, in that cathedral.

THE CHAPEL,

IN the south-west corner of the wood, is built of brick, with a beautiful front of Portland stone, executed by Mr. Gayfere of Westminster, and taken from the tomb of Edmund Audley bishop of Salisbury, in that cathedral. In the anti-chapel is an oaken gothic bench, designed by Mr. Bentley;

ley; over it, a head of saint John Baptist, alto relievo, in marble, on a pedestal of the same in a fine taste, the work of Donatello, and a present from sir Horace Mann. On the opposite side, a crucifix of bronze; and beneath it, on an angular pedestal of fayence on which is a bust of an angel, stands an eneenfoir of bronze. By the door is a holy-water-pot of earthen-ware, given by Mr. G. A. Selwyn.

In the window are the original portraits * of Henry 3d. and his queen in painted glass, with other faints and coats of arms. Fronting the door stands a magnificent shrine of mosaic, three stories high; and beneath it, a crucifix inlaid with mother of pearl, bought at the sale of the honorable Richard Bateman in 1774. On one side of the shrine, in a recess, stands on a console a figure of an ancient king of France, in fayence; on the other side, the virgin Mary, of bronze. The roof was designed by Mr. Chute. On a tablet over the door is the following inscription,

The shrine in front was brought in the year 1768 from the church of santa Maria maggiore in Rome, when the new pavement was laid there. This shrine was erected in the year 1256 over the bodies of the holy martyrs Simplicius, Faustina, and Beatrix, by John James Capoccio and Vinia his wife; and was the work of Peter Cavalini, who made the tomb of Ed-

G g

ward

* These were a present from the earl of Ashburnham.

ward the Confessor in Westminster-abbey. See the Anecdotes of Painting, vol. 1. p. 17.

The window was brought from the church of Bexhill in Sussex. The two principal figures are king Henry 3d. and Eleanor of Provence his queen, the only portraits of them extant. King Henry died in 1272, and we know of no painted glass more ancient than the reign of his father king John. These portraits have been engraved for the frontispiece to the Anecdotes of Painting.

This chapel was erected by Horace Walpole in the year 1771. The facade was copied from a chapel-tomb in the cathedral of Salisbury.

At the end of the winding walk is a large feat in the form of a shell, carved in oak, from a design by Mr. Bentley.

The Cottage in the Flower-Garden.

THE TEA-ROOM

IS hung with green paper and prints. Over the chimney, two sconces of Chantilly china, a sceau for liquors of Seve, two chocolate-cups ditto, a handle cup and faucer, a caudle-cup and deep faucer, all with coloured flowers; a
rice

rice cup on feet, a saltfeller of old fayence, and four biscuit figures. On the hearth, a flower-pot of fine blue earth.

On a shelf and brackets, two blue and white pot pourris of Nankin china, two pierced blue and white basons of old delft, and two sceaus of coloured Seve; a blue and white vase and cover, and two old fayence bottles.

On the tea-table, a white tea-pot with gold edge of Seve, four handle cups and saucers, a sugar-dish, milk-pot, bason, and plate of the same; a tea-pot of crackled china with blue and brown flowers, an octagon green bason with coloured flowers, a ditto white with ditto, a green leaf of Staffordshire-ware, two blue and white handle cups of Seve, one ditto larger in shape of a pail, two ditto with coloured flowers and blue rims, one ditto with dark blue and gold edges and coloured flowers, and one ditto with blue and gold mosaic on white.

THE LITTLE LIBRARY

IS painted green and white. Over the chimney, an original half-length of Milton, æt. 45, in black, a ring tied to one of his button-holes. In the key-stone of the chimney, an antique bas-relief with the story of Mars and Venus. On the mantle-piece, thirteen antique sepulchral earthen lamps.

Over the door, an antique painting in fresco. *Vide Middleton's Germania, &c.*

A bronze

A bronze tripod for burning incense. M.

A marble Canopus.

Over the book-cases; A small marble bust of lord chancellor Clarendon.

Fourteen small Etruscan vases.

Ten black Staffordshire ditto.

Two yellow beakers with flowers of Staffordshire-ware.

Two red china ditto.

Two flower-pots of crackled china.

A blue china bottle.

In this library are several volumes of MSS.

IN THE GARDEN.

AN extraordinary large brain-stone: a present from Mr. Grosvenor Bedford.

Bernini's Apollo and Daphne in bronze.

A large antique sarcophagus in marble, with bas-reliefs: from the collection of Bryan Fairfax, esq;

Two ossuaria.

The sleeping Morpheus in plaister.

STRAWBERRY-

STRAWBERRY-HILL,
A BALLAD,

By William Pulteney Earl of Bath.

*To the tune of a former song written by G. Bubb Doddington
lord Melcomb, the burthen of which was, My Strawberry,
my Strawberry shall bear away the Bell.*

I.

SOME cry up Gunnersbury,
For Sion some declare;
And some say that with Chiswick-house
No villa can compare:
But ask the beaux of Middlesex,
Who know the country well,
If Strawb'ry-hill, if Strawb'ry-hill
Don't bear away the bell?

II.

Some love to roll down Greenwich-hill
For this thing and for that;
And some prefer sweet Marble-hill,
Tho' sure 'tis somewhat flat:

H h

Yet

Yet Marble-hill and Greenwich-hill,
 If Kitty Clive can tell,
 From Strawb'ry-hill, from Strawb'ry-hill
 Will never bear the bell.

III.

Tho' Surry boasts its Oatlands,
 And Clermont kept so jim,
 And some prefer sweet Southcote's,
 'Tis but a dainty whim :
 For ask the gallant Bristow,
 Who does in taste excell,
 If Strawb'ry-hill, if Strawb'ry-hill
 Don't bear away the bell ?

IV.

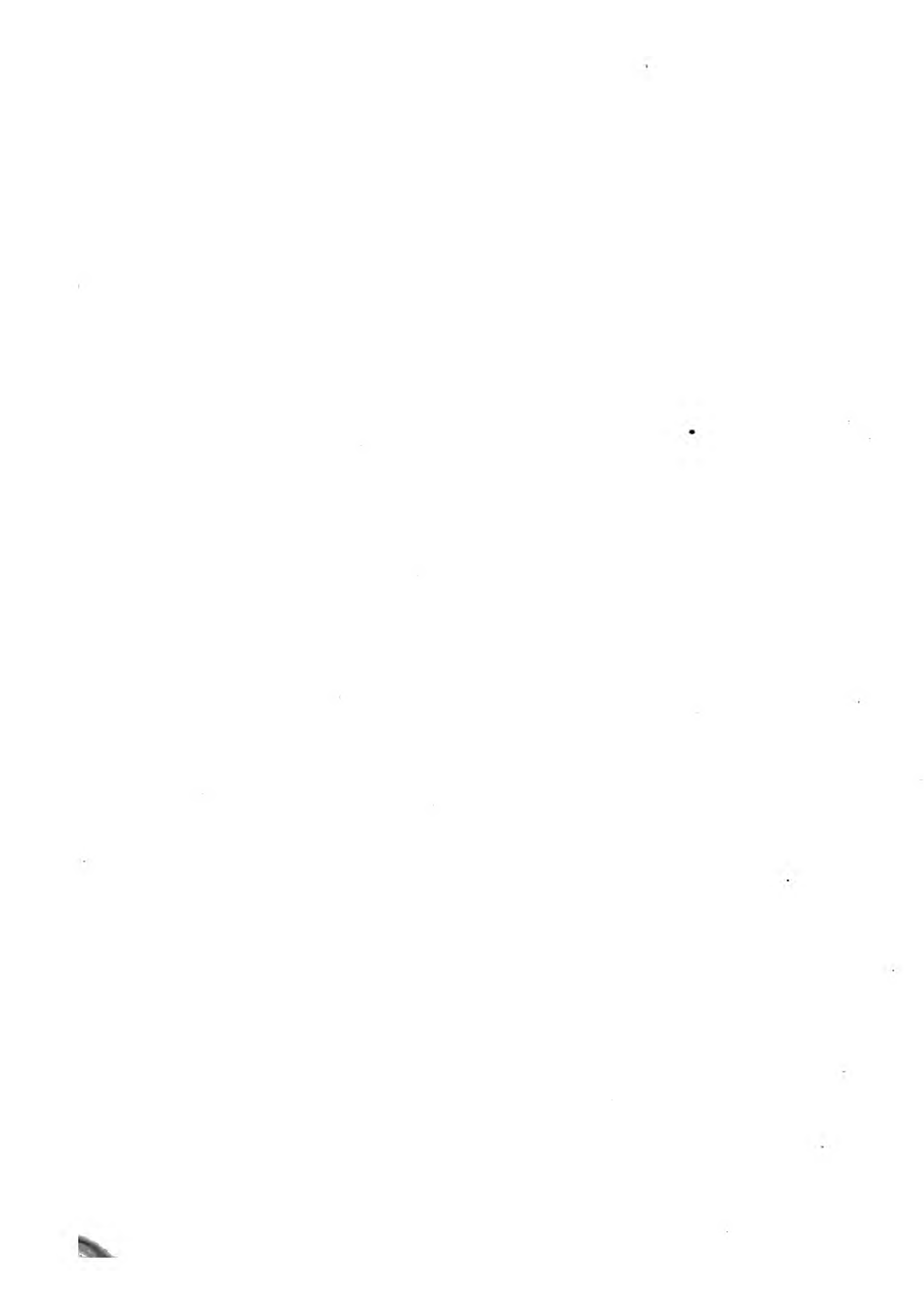
Since Denham sung of Cooper's,
 There's scarce a hill around,
 But what in song or ditty
 Is turn'd to fairy-ground---
 Ah, peace be with their memories !
 I wish them wond'rous well,
 But Strawb'ry-hill, but Strawb'ry-hill
 Must bear away the bell.

V.

Great William dwells at Windfor,
As Edward did of old,
And many a Gaul and many a Scot
Have found him full as bold.
On lofty hills like Windfor
Such heroes ought to dwell,
Yet little folks like Strawb'ry-hill,
Like Strawb'ry-hill as well.

The 2d. 4th. and 5th. stanzas were added by another hand.

F I N I S.



A P P E N D I X.

Pictures and Curiosities added since the Catalogue was printed.

IN THE GREAT PARLOUR.

AN old woman letting a boy light a candle, by Schalken; very good.

Two boys, a dog and a goat, by Bassan; from Mr. Jennings's collection.

IN THE CHINA-ROOM.

Two white handle cups and saucers, finely painted with natural flowers, of Seve porcelaine. A Mercury, ditto.

A groupe of the graces supporting a basket, of Seve biscuit.

A large old white china tea-pot, that was the duke of Monmouth's; a present from lord Harcourt.

A sauce-boat of Roman fayence, with Cupid riding on a dolphin.

Twelve plates of Wedgwood's ware, with cameos of blue and white, and blue festoons; from a design of lady Diana Beauclerc.

A basin and ewer of Roman fayence, painted with landscapes; a present from the earl of Exeter.

A large round vase and cover, and a dish to it, of Roman fayence.

Two dishes of the same.

A cup and saucer, white with green festoons, of Bristol porcelaine.

A round picture of white flowers in alto relievo, of the same manufacture.

A square compotier with blue and gold flowers, of Salopian porcelaine.

A blue, gold, and colour'd sugar-dish and plate, of Worcester porcelaine.

Two white glass cups, with gold festoons and rams heads, of English manufacture.

Two dessert-plates of old china in form of herons.

A groupe of two figures and five single cupids, of Hesse and Brunswick porcelaine; presents from lord Beauchamp.

Sir William Hamilton, envoy at Naples, and Catherine lady Walpole; medallions of Wedgwood's ware.

Louis quinze, the queen of Louis seize, and Dr. Franklin, medallions in biscuit.

Two

Two tall chocolate-cups and saucers, beautifully painted with holyoaks, of Sevres china.

A white and gold mug and saucer, with Chinese pheasants, of ditto.

A cup and saucer of ditto, all over strawberries; a present from madame du Deffand.

A cup and saucer of ditto, lilac and gold, with the story of Pan and Syrinx in crimson.

A cup and saucer of Wedgwood's ware, finely painted with English views.

IN THE YELLOW BEDCHAMBER,
OR BEAUTY-ROOM.

The chimney-piece was designed by Mr. Bentley. The room is hung with grey spotted paper, the bed and chairs of yellow silk and stuff damask. On the ebony table, two large old blue and white china candlesticks, and a writing-box of sandal-wood inlaid with ivory. On the commode with a slab of white marble, bought at Mr. Bateman's sale, a bronze cast of the hermaphrodite. A fire-screen worked by lady Offory.

Over the chimney, Charles 2d. James duke of York and Mary princess of Orange, when children, copied from Vandyck by Charles Beale.

A fine portrait of sir Peter Lely, after himself, by ditto.

Elizabeth

Elizabeth Wriothesly countess of Southampton, and afterwards first wife of Ralph the first duke of Montagu, by ditto, after ditto. These three are in water-colours.

Nineteen small heads in oil of the court of Charles 2d. (except Sachariffa) copied by Jarvis for himself, and bought with his house at Hampton by Mr. Lovibonde, at whose sale these and the three foregoing were purchased.

Charles the second.

Queen Catherine.

King William when prince of Orange.

Queen Mary, when princess.

Catharine Sidley, countess of Dorchester, mistress of James 2d.

Frances Stuart (of Grammont's Memoires) duchess of Richmond.

Louise de Querouaille, duchess of Portsmouth.

Lady Dorothy Sidney, countess of Sunderland, Waller's Sachariffa.

Barbara Villiers, duchess of Cleveland.

Arabella Churchill, wife of Mr. Godfrey, mistress of James 2d.

Mrs. Philadelphia Saunders.

Mrs. Trevor, maid of honour: having seen the duke of Monmouth in bed with another lady, and divulged it, the duke engaged Mr. Thynne to debauch her. Mr. Thynne being
being

being killed before he bedded lady Ogle, this epigram was made on him,

*Here lies Tom Thynne of Longleat-hall,
Who never would have miscarried,
Had he married the woman he lay withal,
Or lain with the woman he married.*

Lady Anne Cavendish, daughter of William earl of Devonshire, and wife of John earl of Exeter.

Lady Gertrude Pierpoint, daughter of William earl of Kingston, and wife of George Saville, marquis of Halifax.

Lady Mary Rich, daughter of Robert earl of Warwick, wife of Henry viscount St. John, and mother of the famous lord Bolingbroke.

Henry earl of Ogle, only son of Henry Cavendish duke of Newcastle.

Lady Elizabeth Percy, only daughter and heiress of Josceline last earl of Northumberland, married first to Henry lord Ogle, secondly to Thomas Thynne, esq; and lastly to Charles Seymour, duke of Somerset.

Two other ladies, unknown.

Over the door, Mary queen of Scots, by Vertue.

Lady Anne Hamilton, daughter of W. duke of Hamilton, and wife of Robert Carnegie, earl of Southesk.

Lady Elizabeth Butler, daughter of James duke of Ormond, and wife of Philip Stanhope earl of Chesterfield. These two

heads are copied in chalks by Mr. Faringdon, from the originals by fir Peter Lely, at Mr. Fountaine's at Narford. *See an account of the two ladies in the Memoires de Grammont.*

IN THE BREAKFAST-ROOM.

A most curious picture of Rose, the royal gardiner, presenting the first pine-apple raised in England to Charles 2d. who is standing in a garden. The whole piece is well painted, probably by Danckers. It was a present to Mr. W. from the rev. Mr. Pennicott of Ditton, to whom it was bequeathed by Mr. London, grandson of him who was partner with Wife.

Lady Elizabeth Berkeley, wife of lord Craven; by Romney.

Cowley, by fir Peter Lely; the fine original of Zincke's Cowley in enamel, in the cabinet; bought at the sale of Mr. Lovibonde in 1776.

The virgin and child, and two angels holding tapers; an ancient carving in ivory: a present from Mr. Watson the chirurgeon.

Sir Kenelm Digby, his wife and two sons, by Peter Oliver, after Vandyck; a large miniature in the highest preservation; in an ebony case set with Wedgwood's cameos. On the insides of the doors, two other ladies of the same set.

Two

Two other ebony cases, ditto. In one, a lady of the Digby family, half-length, after Vandyck, with a beautiful landscape, by Peter Oliver.

In the other case, lady Digby enamelled, in a frame of the same, with her arms, and Latin mottoes, supported by two goddesses; by G. Toulon, 1637.

Lady Catharine Howard, daughter of H. Fred. earl of Arundel, and first wife of John Digby son of sir Kenelm.

On the reverse, in the same enamelled frame, another lady of the family, exquisitely painted by Peter Oliver; probably the second wife of John Digby.

Lady Frances Howard countess of Essex and then of Somerset; copied by lady Bingham, now lady Lucan, from the original at Woburn.

Catherine duchess of Buckingham, daughter of James 2d. in enamel by Zincke: a present from her niece madame de Bouzols.

Added to the second frame and glass. Two boys, sons of sir Kenelm Digby. Note, these and the above-mentioned additional pictures of the Digby's were the other division of that collection, and were purchased by Mr. W. of the lady who shared them with the other heir.

John duke of Lauderdale, copied by lady Lucan from the original by Cooper, in the possession of lady Greenwich.

William Henry, duke of Gloucester; by lady Lucan, after Meyer.

Charlotte

Charlotte de la Tremouille countess of Derby; in a frame of silver filigraine.

A lady's head, supposed to be the countess of Pembroke, wife of earl William; by Hoskins: finely preserved. A present from the duchess dowager of Portland.

Miss Temple, maid of honour to Anne Hyde duchess of York, and second wife of sir Charles Lyttelton; by Spenser, after the unfinished picture by Cooper, in the possession of lord Lyttelton.

Two beautiful bas-reliefs of boys in wax, by lady Diana Beauclerc; set in frames with her arms, and cameos by Wedgwood and Taffie.

A print by Bartolozzi of Giorgiana Spencer duchess of Devonshire, from the drawing of lady Diana Beauclerc; in a frame with Wedgwood's cameos, and two flies engraved and painted by Hill.

Lady D. Beauclerc's two daughters, engraved from her drawing by Bartolozzi; in a blue and gold frame painted in mosaic with lions and flower de luces, in allusions to the arms of Beauclerc.

Four washed views of the chateau de Grignan in Provence: a present from George Hardinge, esq;

A view of the church of Stokepogeys in Buckinghamshire; the moon shining on Mr. Gray's tomb in the church-yard; by Baron: a present from sir Edward Walpole.

Anne

Anne Liddel countess of Offory; in crayons, by Hamilton.

Margaret Smith, wife of sir Charles Bingham lord Lucan; ditto. This lady arrived in five months, by copying in water-colours the enamels and miniatures in this collection, at great perfection, and in that short time copied forty pieces, imitating most exactly the manners of the several masters. Mr. W. wrote the following lines on that subject;

Without a rival long on painting's throne

Urbino's modest artist sat alone.

At last a British Fair's unerring eyes

In five short moons contests the glorious prize.

Raphael by genius, nurs'd by labour, gain'd it---

Bingham but saw perfection, and attain'd it.

An allegoric washed drawing of Christina of Pifa writing her Cité des Dames, from an illumination in the library of the king of France.

A flower, in paper mosaïc, executed by Mrs. Delany, the inventress, who between the seventieth and eightieth years of her age executed 500 plants in this manner. She was daughter of Mr. Granville by the daughter of sir John Stanley, and was first married to Mr. Pendarvis, and then to Dr. Delany.

Its companion, by Mrs. Delany's scholar, miss Jennings of Shiplake.

George Hamilton, brother of count Antony Hamilton;

small copy in oil by E. Edwards, from the original in the possession of lord Kingsland.

IN THE GREEN CLOSET.

Inside of a church, by Steenwick.

Profile of an angel, after Guido; done in hair by Mary Lane, 1778.

Mrs. Catharine Clive, the excellent comedian, in the character of the fine lady in *Lethe*; in water-colours by Worlidge.

Henry Howard earl of Northampton; copied in water-colours by Harding, from the original at the earl's college at Greenwich.

IN THE BLUE BEDCHAMBER.

Two blue and white square candlesticks of the old Delft ware.

The Hercules Farnese, small bronze.

An ancient lock to the door, richly wrought of brass and steel.

IN THE RED BEDCHAMBER.

A small half-length of a young man, octagon on copper, by Fr. Hals; from Mr. Jennings's collection.

A head of the duke d'Epernon, favourite of Henry 3d. painted on oriental alabaster; a present from colonel St. Paul, chargé d'affaires at Paris.

Madame de Prie, mistress of the duc of Bourbon, prime minister in the minority of Louis 15. in crayons; she died of vexation at the disgrace of the duke: a present from madame du Deffand, who was intimate with her.

A young lady reading the Castle of Otranto to her companion; a graceful and expressive drawing, done for a present to Mr. W. by Lavinia Bingham, eldest daughter of lady Lucan, the celebrated copyist, and since married to lord Althorp.

ON THE STAIRCASE.

Two shields of leather, for tournaments, painted by Polidore; one has the head of Medusa, the other of Perseus: on the inside are battles in gold. They came out of the collection of commendatore Vittoria at Naples, and were sent to Mr. W. by sir W. Hamilton, with a third of iron, representing the story of Curtius, but certainly not antique, as there is a cannon and an embattled tower at a distance.

Over the middle arcade is a curious ancient head of Henry 3d. carved in alto-relievo on oak, from the church of Barnwell near Oundle, which he endowed.

IN THE ARMOURY.

Two halberds, from the old house at Houghton.

An American calumet; a warrior's wreath; and a neck ornament: presents from governal Pownall.

An ancient musket, richly carved; a present from Moses Franks, esq;

IN THE LIBRARY.

An ancient curfeu, or couvre-feu; from Mr. Gostling's collection.

A book of French portraits in the time of Francis 1st. It belonged to Brantome, who has inscribed the names of several of the persons. From the collection of Monf. Mariette at Paris.

A large volume bound in red morocco and gold, containing etchings of various persons of quality.

A large book of miscellaneous drawings by various masters, ancient and modern.

Bathoe's catalogues of the collections of Charles 1st. James 2d. and the duke of Buckingham; with their portraits, and large additions and notes.

Catalogue of the pictures belonging to the crown, temp. Annæ, MS. A present from Mr. Topham Beauclerc.

Two

Two large volumes of catalogues of all the exhibitions from the first, to the end of the year 1780, with MS. notes.

IN MR. WALPOLE'S BEDCHAMBER.

George Cholmondeley 4th. earl of Cholmondeley, grandson of Mary Walpole lady Malpas; by Pompeo Battoni.

Colonel Edward Walpole, only son of sir Edward Walpole, knight of the Bath; by Hudson.

Six portraits in miniature, by Charles Beale; a head of Rubens in chalk, by Lens; and a print of madame de Sevigné.

A drawing in black chalk of Jacob Hall the rope-dancer, favourite of the duchess of Cleveland; copied by Dean from an unique print in the collection of Dr. Fothergill.

IN THE STAR CHAMBER.

Two small Welch armed chairs, painted blue and white, with cushions of point-lace, and on one the arms of Mr. Richard Bateman, at whose sale they were purchased.

A mahogany cabinet, containing a collection of English and foreign coins and medals. Under it a vase of false porphyry; from the collection of the comte de Caylus.

Another like cabinet, with gold, silver, and brass Greek and Roman coins, and a compleat set of Roman weights

M m

from

from Dr. Middleton's collection. Beneath, a vase, companion to the former.

A Tuscan vase of Wedgwood's ware.

A porringer, cover and plate, white, with different golds, of Seve china; a present from Mrs. Damer.

IN THE HOLBEIN CHAMBER.

The red hat of cardinal Wolsey, found in the great wardrobe by bishop Burnet when clerk of the closet. From his son the judge it came to the countess dowager of Albemarle, who gave it to Mr. Walpole.

A chair covered with purple; made after one in a pane of painted glass.

Head of sir Thomas Wyatt the younger, beheaded in the reign of queen Mary, in a round on board; copied by Milbourn, from the original in the possession of lord Romney.

A man in black, by Holbein, in a rich gold frame; from the collection of H. Constantine Jennings, esq; of Shiplake.

A drawing of a clock, by Holbein; designed for sir Antony Denny as a new year's gift to Henry 8th. Bought at the sale of mons. Mariette.

A drawing of a Romish episcopal saint; whole length, by Holbein.

IN THE GALLERY.

A bust of Tiberius, from Mr. Jennings's collection.

Two tubs of old blue and white porcelaine; a present from Mr. Gostling.

In the chest, three slash'd doublets, a cloak ditto, and a pair of black embroidered breeches, which belonged to Robert Walpole, great grandfather of sir Robert Walpole first earl of Orford, and had been preserved in the old house at Houghton: given by George lord Orford.

IN A CLOSET,

With glass doors, between the gallery and round chamber, is a large collection of ancient porcelaine of China, which belonged to Catherine lady Walpole. Under the window, a small altar, part of the shrine in the chapel, and on it a silver ladle with an ivory handle carved and gilt, used by Indian ladies for incense; a present from Charles duke of Richmond.

IN THE ROUND DRAWING-ROOM.

A large vase of Florentine fayence, with the arms of the great duke.

Two

Two large bottles, ditto, with the arms of duke Ferdinand of Medici and his wife Christina of Lorraine.

A bottle of Roman fayence.

A green and gold table and two high stands, with the arms of sir Robert Walpole and Catherine Shorter, his first wife.

IN THE TRIBUNE.

In the cabinet of enamels : A beautiful enamel by Petitot, of Catherine Henriette d'Angennes comtesse d'Olonne, as a Diana, a character very different from that given of her in Buffon's *Histoire amoureuse des Gaules*. It is set in a frame of flowers enamelled in relief by Giles Legaré de Chaumont en Bassigni, who was famous for that sort of works : from the collection of mons. Mariette.

A young man in black ; copied by lady Lucan from a portrait by Titian, in the collection of the duke of Devonshire.

A lady's head by Rosalba ; set in tortoisshell.

James Brydges, first duke of Chandos, in enamel, by Zincke ; a present from G. S. earl of Harcourt.

Lord Loudon, chancellor of Scotland ; by Samuel Cooper.

A silver Turkish ornament, taken by a Russian officer in the last war ; brought over by Charles lord Cathcart, and
given

given by him to Margeret lady Brown, and by her to Mr. Walpole.

A seal of the head of sir Robert Walpole on white cornelian, by Natter; a present from ditto.

A toothpick-case of gold, enamelled with cameos; a present from lady Diana Beauclerc.

A gold snuff-box, with the image in wax of mad. du Defand's dog, Tonton, whom she bequeathed with this snuff-box and her MSS. to Mr. Walpole.

Vandyck's head by himself, a sketch for the duke of Grafton's picture.

Soldiers at cards; a curious picture, being painted in the manner of Teniers, by Vandyck: from lord Oxford's collection.

The education of Cyrus, in water-colours, by Judith Boiffiere, a French woman, in 1725: from Castiglione, in the collection at Houghton.

Rubens, his wife and child, in water-colours, by B. Lens, from the original at Blenheim.

A battle, in black and gold, exquisitely touched by Calot: bought at Mrs. Stanley's sale.

IN THE PASSAGE.

An Indian bottle and pipe, ornamented with gold and pearls; brought from Bengal by Henry Churchill, esq; in 1776.

Head of Fiamingo the sculptor, holding an ivory groupe of boys.

Mary duchess of Richmond, daughter of George Villiers, duke of Bucks. small whole length from Vandyck.

IN THE GREAT BEDCHAMBER.

A fire-screen of the tapestry of the Gobelins.

Two bas-reliefs of boys in wax on glass, designed and modelled by lady Diana Beauclerc, sister of George duke of Marlborough. On the back are written these lines :

*Tho taste and grace thro' all my limbs you see,
And nature breathes her soft simplicity,
Me nor Praxiteles nor Phidias form'd ;
'Twas Beauclerc's art the sweet creation warm'd,
From Marlbro' sprung.---We in one heav'n-born race
Th' attemper'd rays of the same genius trace ;
As big with meteors from one cloud depart
Majestic thunder and keen lightning's dart.* H. W.

In the place of the Niobe, hangs the portrait of Frances daughter of Richard Jennings, esq; [the mademoiselle Jennings of Grammont] first married to George Hamilton, and afterwards to Richard Talbot duke of Tirconnel: copy by Milbourn from the original at lord Spencer's.

In the place of the picture of Henry 8th. and Charles 5th. which now hangs on the staircase, is the original portrait of Catherine

Catherine of Braganza, that was sent from Portugal previous to her marriage with Charles 2d. and from which Faithorne scraped his print: a present from Richard Bull, esq;

Sir Nicholas Carew, knight of the garter and master of the horse to Henry 8th. in whose reign he was beheaded: copied by Milbourn from the original by Holbein, at Beddington in Surrey.

In the glass closet: A small bust in terra-cotta of Nicolo Pouffin's wife, beautifully simple and natural, by Fiamingo, *amicitæ causâ*: from mons. Mariette's collection.

Two square flower-tubs of Wedgwood's ware, painted with antique cameos and masks in blue, from designs of lady Diana Beauclerc.

The spurs worn by king William at the battle of the Boyne, preserved in an Irish family, and given to the late earl of Harcourt when lord-lieutenant, and by the present earl to Mr. W. in a red leather box lined with green velvet.

A tortoiseshell case studded with silver, in which Van Tromp used to carry his pipes to sea: a present from Mr. Hamilton.

Two ivory billiard-sticks, engraved; they belonged to H. Herbert earl of Pembroke, and have his crest a wyvern holding a bloody hand, and the bear and ragged staff for his third wife, the famous Mary, sister of sir Philip Sidney; and an ancient ivory busk, engraved with French devices and mottoes:

toes: all three from the collection of Mr. Gostling of Canterbury.

Twelve silver dessert-plates, engraved with the history of the prodigal son. They belonged to lord chancellor Clarendon, and descended to his great grand-daughter the celebrated duchess of Queensberry, and were purchased at the duke's auction.

ON THE BACK STAIRS.

Lady Catharine Fitzalan marchioness of Dorset, daughter of William earl of Arundel, and first wife of Henry Grey, afterwards duke of Suffolk, from whom she was divorced to make room for his marriage with lady Frances Brandon, daughter of Mary queen of France and Charles duke of Suffolk.

THE BEAUCLERC CLOSET,

Is a hexagon, built in 1776, and designed by Mr. Essex, architect, of Cambridge, who drew the ceiling, door, window, and surbase. In the window is a lion and two fleurs de lys, royally crowned, ancient, but repaired and ornamented by Price; and being bearings in the royal arms, serve for Beauclerc. The closet is hung with Indian blue damask, and was built on purpose to receive seven incomparable drawings of lady Diana Beauclerc for Mr. Walpole's tragedy of the Mysterious Mother. The beauty and grace of the figures

figures and of the children are inimitable; the expression of the passions most masterly, particularly in the devotion of the countess with the porter, of Benedict in the scene with Martin, and the tenderness, despair, and resolution of the countess in the last scene; in which is a new stroke of double passion in Edmund, whose right hand is clenched and ready to strike with anger, the left hand relents. In the scene of the children, some are evidently vulgar, the others children of rank; and the first child, that pretends to look down and does leer upwards, is charming. Only two scenes are represented in all the seven, and yet all are varied; and the ground in the first, by a very uncommon effect, evidently descends and rises again. These sublime drawings, the first histories she ever attempted, were all conceived and executed in a fortnight. Other pictures in this closet are,

Lady Diana Beauclerc, by Powel, after sir J. Reynolds.

Charles Lenox 3d. duke of Richmond, profile, by Milbourn after Romney.

Count Schouallow, favourite of the Czarina Elizabeth, whose image he holds. This worthy man, who enjoyed absolute power for twelve years, never did an injury or made an enemy. Painted at Paris in 1775.

Two young women and a boy, a drawing in a round, by lady Diana Beauclerc.

Four fronts of a gothic house, designed by Mr. John

Chute for Mr. Andrews, and built at Spinchill near Donnington-castle, Berkshire.

Two capital drawings by Paulo Panini, bought at Mariette's sale.

A view of the fictitious monument designed and erected by general H. S. Conway, near the Thames, at his seat at Park-place near Henley: and,

A view of the lesser arch, designed and erected by the same, at ditto. These two by Paul Sandby, in 1781.

All these pictures have black and gold frames.

Two arms for candles of or-molu, in the form of lillies, from Paris.

Two black and gold triangular stands.

A tea-service of old blue and white porcelaine.

A tea-chest of Clay's ware, painted with loose feathers.

A head of Augustus, from an antique cameo belonging to sir William Hamilton, modelled in wax by Mrs. Damer, daughter of general Conway, in 1777.

A head of Voltaire, ditto, its companion.

A writing-table of Clay's ware, highly varnished: it is black, with blue and white ornaments in a gothic pattern, designed by Paul Sandby. In one of the drawers the play of the Mysterious Mother, to explain the drawings, bound in blue leather and gilt.

IN THE ROUND BEDCHAMBER, Two pair of Stairs.

Christian Reisin, seal-engraver, in an oval; freely painted by Dahl.

Enoch Zeeman, the painter, in his original presbyterian habit, and his daughter as a boy by him: well painted by himself.

Pearce, sen. statuary, by Fuller; from Vertue's collection.

In the PLAID BEDCHAMBER, in the South Tower, is the portrait of Henry Walpole the jesuit, who was executed for attempting to poison queen Elizabeth. He is crowned with glory and holds a palm-branch, the emblem of martyrdom; the arms of the family in one corner. This picture came from Mr. Walpole's of Lincolnshire, the last of the Roman catholic branch of the family, who died about the year 1748.

IN THE GREAT CLOYSTER.

In the place of the cat's tub, which is removed to the smaller cloyster at the entrance of the house, stands a fine antique marble vase with a Greek inscription; bought at the sale of Chafe Price, esq; in 1778.

Eight very ancient Welch chairs, turned, and four stands; bought at the sale of Mr. Richard Bateman of old Windsor.

IN

IN THE CHAPEL,

Before which stand on pedestals four rare Indian flower-tubs, bought at Mr. Bateman's,

Four pannels that came out of the abbey of St. Edmund's-bury, and were doors to an altar-piece, and were since in the possession of Peter Leneve, Norroy, and after him of Mr. Martin and Mr. Ives, antiquaries; on whose death Mr. W. bought and had them sawed into four pictures. On the outside pannels are Henry Beaufort cardinal of Winchester, and John Kemp archbishop of Canterbury. On one of the insides is Humphrey duke of Gloucester praying, and behind him a saint holding the duke's cap of estate in one hand, and a golden chalice in the other. On the other is a person in the act of adoration in a stable, whence it is probable that the virgin and child were represented on the middle piece which is wanting. This person seems to be Joseph, but may be the donor of the altar-piece, as over him is a shield of arms of Tate, impaling Boleyn or Sanders, for the colour of the chevron is turned black. These perhaps might be attached to the house of Lancaster, who were great benefactors to the abbey, and two princes of which family, afterwards so memorable for their enmity, are here represented. The three portraits agree remarkably with those of the same persons

sons in the marriage of Henry 6th. in the library, especially the archbishop and the duke, who has the same bald head and furred mantle. The two prelates are hard and dry, but the duke and Joseph are painted in a style very superior to that age, and the folds of their garments loose and large, not unworthy of the Bolognese school.

IN THE TEA-ROOM IN THE COTTAGE.

Mary Lepelle lady Hervey, by Ramfay, in a frame carved by Gibbons.

A large green vase of German ware, with a spread eagle, and lizards for handles. Both from Mr. Bateman's.

IN THE LITTLE LIBRARY.

Four more ancient Welch chairs. Also from Mr. Bateman's.

A bronze ink-stand, in good taste; from count Caylus's collection.

F I N I S.

Pp

LIST

LIST OF THE BOOKS

Printed at Strawberry-Hill.

- T**WO Odes by Mr. Gray; quarto, 1757. 1000 copies.
Translation of part of Hentzner's Travels; duodecimo, 1757.
220 copies.
Royal and Noble Authors; 2 vol. duod. 1758. 300 copies.
Walpole's Fugitive Pieces; duod. 1758. 200 copies.
Whitworth's Account of Ruffia; duod. 1758. 700 copies.
Spence's Parallel of Magliabechi and Hill; duod. 1758.
700 copies.
Bentley's Lucan; quarto, 1759. 500 copies.
Anecdotes of Painting; small quarto, 3 vol. and one of En-
gravers, 1761. 600 copies.
A second edition of the same, 1765.
Lord Herbert's Life; small quarto, 1764. 200 copies.
Lady Temple's Poems; quarto, 1764. 100 copies.
Cornélie, Tragedie de Henaut; duod. 1768. 200 copies;
150 went to Paris.
The Mysterious Mother, Tragedy; duod. 1768. 50 copies.
Hoyland's Poems; duod. 1769. 300 copies.

Memoires

BOOKS PRINTED AT STRAWBERRY-HILL.

Memoires de Grammont ; small quarto ; 1771. 100 copies ;
30 went to Paris.

Letters of Edward VI. small quarto, 1771. 200 copies.

Miscellaneous Antiquities, 2 numbers ; small quarto, 1772.
500 copies.

Description of Strawberry-Hill ; small quarto, 1774. 100
copies, 6 on large paper.

Mr. Fitzpatrick's Dorinda, and Mr. Charles Fox's Verses to
Mrs. Crewe ; small quarto, 1775. 300 copies.

The Sleep-Walker, Comedy, by lady Craven, 1778. 75
copies.

Letter to the Editor of Chatterton's Miscellanies ; octavo,
1779. 200 copies.

Mr. Charles Miller's Verses to lady Horatia Waldegrave ;
small quarto, 1780. 150 copies.

Fourth volume of the Anecdotes of Painting, printed in
1770, but not published till Oct. 1780. 600 copies.

Mr. Jones's Ode on lord Althorp's Marriage ; quarto, 1781.
250 copies.

Letter from the hon. Thomas Walpole ; small quarto, 1781.
120 copies.

*N. B. Mr. Miller's, Mr. Fitzpatrick's and Mr. Fox's verses,
Hoyland's poems, and Mr. Walpole's letter, were only loose
sheets or small tracts.*

A D D I T I O N S

SINCE THE APPENDIX.

IN THE GREAT PARLOUR. A large piece of the ladies Laura, Maria, and Horatia Waldegrave, daughters of James second earl of Waldegrave and Maria Walpole, afterwards duchess of Gloucester; by sir Joshua Reynolds, 1781.

A two-leaved screen, containing part of a map of Surry and Middlesex. It is a piece of the first tapestry woven in England, and came from Weston in Warwickshire, the seat of the Sheldons who introduced the manufacture. The complete suite of hangings were purchased by Mr. Walpole, and presented by him to the earl of Harcourt. This specimen had never been hung up.

IN THE LITTLE PARLOUR. Two sleeping dogs, the original model in terra-cotta, by the honorable Mrs. Damer, which she afterwards executed in marble for the duke of Richmond.

ON THE STAIRCASE. View of Richmond-hill, the original drawing by Mr. Henry Bunbury; a present from himself.

A curious emblematic picture of a man standing, small whole length, with a bust of Charles 2d. seemingly before

Qq

his

his restoration, for a cupid is weighing the broken arms of England (as a commonwealth) against crowns and sceptres, (but the sceptre is a French one, therefore probably painted abroad) fragments of architecture, and the man holds a plan like St. Paul's; thence it has been supposed a portrait of Sir Christopher Wren, but does not resemble him, nor are the arms his.

Monamy the painter, shewing a sea-piece to Mr. Thomas Walker, a collector of pictures; small life: the figures by Hogarth, the sea-piece by Monamy. A present from Richard Bull, esq.

IN THE BREAKFAST-ROOM. Vandervaat the painter, by himself, in water-colours, finely done; a present from Richard Bull, esq.

A holy family, modelled in wax, by Mrs. Mary Slaughter, sister of Stephen Slaughter, painter; a present from Miss Anne Clement.

IN THE RED BEDCHAMBER. Gypsies telling a country-maiden her fortune at the entrance of a beech-wood; a most beautiful drawing in water-colours, designed and executed by lady Diana Beauclerc in 1781; the chef-d'œuvre of her works.

A drawing in Indian-ink of a forest, by Mary Danby, first married to Mr. Lockhart, and afterwards to Colonel Harcourt, only brother of George Simon second earl of Harcourt.

ADDITIONS SINCE THE APPENDIX. 151

IN THE STAR-CHAMBER. A marble bust of Gibbs, the architect; by Rysbrack.

IN THE HOLBEIN CHAMBER. A large drawing of a magnificent chimney-piece; a design by Holbein for one of the palaces of Henry 8th.

Arthur prince of Wales; a washed drawing, by E. Edwards, from the only original of that prince when grown up, which belonged to Mr. Sheldon of Weston in Warwickshire, and was purchased by Mr. Child of Osterley-park, Middlesex, 1781.

A fire-screen embroidered by miss Hotham, to whom Mr. W. addressed the fable of the magpie and her young.

Two blue china beakers.

IN THE GALLERY. Two triangular cisterns of Roman fayence, finely painted with figures, probably from designs of Julio Romano; presents from the earl of Exeter.

IN THE ROUND ROOM. A Japan cabinet. On it, two double-branched silver candlesticks with figures of women, bought at lady Vere's sale, in 1783.

IN THE TRIBUNE. In the cabinet of enamels: A golden heart, set with jewels, and ornamented with emblematic figures enamelled, and Scottish mottoes; made by order of
the

152 ADDITIONS SINCE THE APPENDIX.

the lady Margaret Douglas, mother of Henry lord Darnley, in memory of her husband Matthew Stuart earl of Lenox and regent of Scotland, murdered by the papists.

In one of the glass cases: An ancient square German watch, curiously chased in silver gilt.

IN THE PASSAGE. A head in profile of Robert Vere earl of Oxford and duke of Ireland, favourite of Richard 2d.

IN THE GREAT BEDCHAMBER. An ebony cabinet, ornamented with or moulu, lapis-lazuli, agates, pieces of ancient enamel, bas-reliefs of Wedgwood, and nine capital drawings of a gipsy girl and beautiful children by lady Diana Beauclerc, with other drawings by her; and with strawberries and Mr. Walpole's arms and crest. The design of the cabinet by Mr. E. Edwards, in 1783.

In the glass closet: a snuff-box, beautifully painted in brown and white with figures from Etruscan vases, bespoke at Naples, and given by sir William Hamilton.

An ancient German wooden spoon, curiously carved with religious figures and mottoes.

A vase of rock chrystal, carved with battles, unfinished, having been cracked in the workmanship, with a silver gilt foot; bought out of the great duke's wardrobe by sir Horace Mann, and sent to Mr. W.

THE END.

MORE ADDITIONS.

IN THE WAITING-ROOM. Bust of Colley Cibber, poet-laureat, in a cap, when old, coloured from the life, and extremely like. He gave it to Mrs. Clive, the celebrated actress, and her brother Mr. Raftor gave it, after her death, to Mr. Walpole.

IN THE CHINA-ROOM. A white cup and saucer with coloured flowers, made for the comte d'Artois, and called Porcelaine d'Angouleme; a present from the viscountess Mount-Edgcumbe.

Two custard cups of old crackled china, with flowers of plated silver.

A small jar, white within and japanned without; a present from Mr. Barrett of Lee.

A Delft beaker, and two blue and white bottles, ditto.

A large flattish drinking glass, one of the first manufacture at Venice, with the initials of an English lady's name for whom it was made, and the date 1580; a present from lady Giorgiana Smythe.

Three pieces of Moorish mosaic; on one a shield, with the name or title of a Moorish king; bought at the auction of Mr. Carter, who published an account of Spain.

Two vases of white porcelaine, striped with blue and gold, and ornamented with red festoons; from the manufacture of marquis Ginori at Florence: sent by sir Horace Mann.

IN THE BEAUTY-ROOM. Bust of the lady viscountess Melbourne; a cast from the original by Mrs. Damer.

IN THE BREAKFAST-ROOM. A masquerade at Vauxhall, in bister; by lady Diana Beauclerc. There is wonderful expression in the faces, and attitudes, though some of the figures are quite masked, and others have half masks.

IN THE GREEN CLOSET. Profile of lady Ailesbury, in wax; by her daughter Mrs. Damer.

Thomas Seymour lord Sudley, brother of the protector Somerset, copied by lady Lucan from the original in the possession of the marquis of Buckingham.

ON THE STAIRCASE. A Persian shield, over the door into the blue room.

An ancient dish of fayence, over the door of the red room.

Top of a warming-pan that belonged to Charles 2d. with his arms and this motto, *Sarve God and live for ever.* As the

the date on it is 1660, with C. R. it probably was used for his majesty and the duchess of Cleveland.

Wootton the painter, his wife and children; small life, painted by Gav. Hamilton.

ARMOURY. Head of Isis, small model in terra-cotta by Mrs. Damer, which she executed in large in stone for the bridge at Henley.

An ancient battle-axe and a bandelier.

IN MR. WALPOLE'S BEDCHAMBER. A cat, in an ebony frame.

IN THE LIBRARY. A print of king Stanislaus in his old age, coloured and dressed with silks after the cloaths he wore: a present from Mrs. Damer.

IN THE STARCHAMBER. Catherine Hastings, first countess of Chesterfield.

IN THE HOLBEIN CHAMBER. A man in black, holding a ring; small half-length, by Holbein. On the back is written *H. II. data excel. Pn̄pis Vallistari avunculi munere.*

A young lady, its companion; seems to be painted by Lionardo da Vinci. On the back, *Costanza Fregosa, moglie del Co. Manfredo Lando, madre d'Agostino Landi Princ. di*

Val

Val di Taro. Tableau du palais di Monaco. Pn̄pis Vallistari munus. These two pictures were presents to Mr. W. from his great nephew George earl of Cholmondeley.

IN THE CHINA CLOSET, Three blue baskets made like rushes, of old blue china; bought at the sale of the duchess dowager of Portland.

IN THE CABINET OF ENAMELS IN THE TRIBUNE. A small head of a foreign general, in buff with a black sash. It is painted with all the force of oil, though in enamel, and in a grander style than Petitot's. From the Portland collection.

IN THE PASSAGE. Drawing of a concert, by captain Laroon.

View of the cathedral of Gloucester, by Samuel Lysons, esq. 1785.

View of Windsor-castle, by lady Diana Spencer, duchess of Bedford.

Print of monsieur le duc de Nivernois.

IN THE SMALL CLOSET. Venus and Cupid in ivory, finely drawn and executed, but in the Flemish style; a present from Mr. Watson the surgeon.

An ivory comb, sent by pope Gregory to queen Bertha; from the Portland collection.

IN THE GREAT BEDCHAMBER. Henry 7th. a most capital portrait on board, and incomparable for the truth of nature, expression, and chiaro scuro. The character and thought in the countenance, and its exact conformity with the bust by Torreggiani in the Star-chamber, make it unquestionably a portrait for which the king sat; and yet the knowledge of light and shade, not possessed even by Holbein, makes it probable that this picture was retouched by Rubens, of whose colouring it is worthy and resembles.

In Lady Diana Beauclerc's Cabinet. The book of Psalms, with 21 inimitable illuminations by don Julio Clovio, scholar of Julio Romano. If any thing can excel the figures, it is the execution of the borders, which are of the purest antique taste, and unrivalled for the lustre and harmony of the colours, as well as for the preservation, which is allowed to be more perfect than any of the few works of this extraordinary master. It was painted, as is said on one of the illuminations, Principi Andegavensi, 1537; was afterwards in the Arundelian collection, on the dispersion of which it was purchased by the earl of Oxford in 1720, who bequeathed it to his daughter the duchess of Portland, at whose sale Mr. Walpole bought it in 1786.

The head of Jupiter Serapis, in basalt. The divine majesty and beauty of this precious fragment prove the great ideas and consummate taste of the ancient sculptors. This

bust was purchased, with the celebrated vase, from the Barberini collection at Rome, by sir William Hamilton; and was sold with the vase to the duchess of Portland, and on her grace's death was bought by Mr. Walpole.

A locket with hair of Mary Tudor, queen of France; whose tomb was opened in 1784; a present from miss Fauquier.

A very small crystal watch; a present from general Fitzwilliam.

IN THE ROUND BEDCHAMBER. Portrait of Oliver Cromwell's mother, copied from the original at Hinchinbrook; given by lord Sandwich.

Mrs. Catherine Clive, the actress, with a music-book; painted by Davison: a present from her brother Mr. James Raftor.

F I N I S.

1

101

1

1

1









